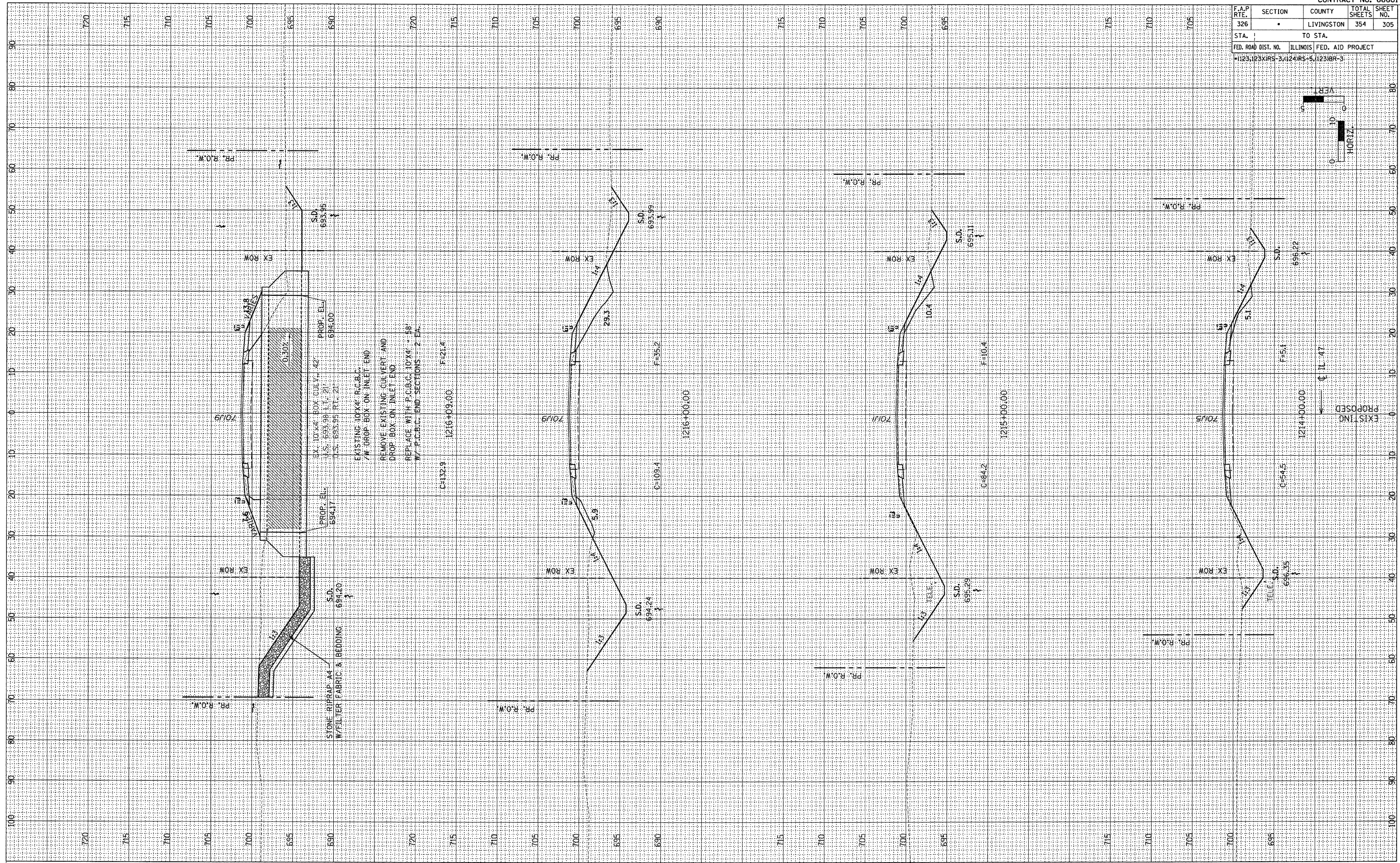
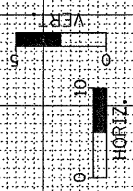


F.A.P. RTE.	SECTION	COUNTY	TOTAL SHEETS	SHEET NO.
326	•	LIVINGSTON	354	305
STA.	TO STA.			
FED. ROAD DIST. NO. ILLINOIS FED. AID PROJECT				
1123,123XIRS-3,124RS-5,123BR-3				



EXISTING 10'X4' R.C.B.C.
W/ DROP BOX ON INLET END

REMOVE EXISTING CULVERT AND
DROP BOX ON INLET END

REPLACE WITH P.C.B.C. 10'X4' - 58'
W/ P.C.B.C. END SECTIONS - 2 EA.

STONE RIPRAP A4
W/FILTER FABRIC & BEDDING

EX. 10'X4' BOX CULV. 42'
I.S. 693.98 I.L. 21
I.S. 693.95 R.L. 21

PROP. EL. 694.00

PROP. EL. 694.17

701.9

S.D. 694.20

S.D. 693.95

ORIGINAL SURVEY	BY	DATE
REVIEWED		
PLOTTED		
TEMPLATE		
AREAS		
AREAS CHECKED		

FINAL SURVEY	BY	DATE
SURVEYED		
TEMPLATE		
AREAS		
AREAS CHECKED		