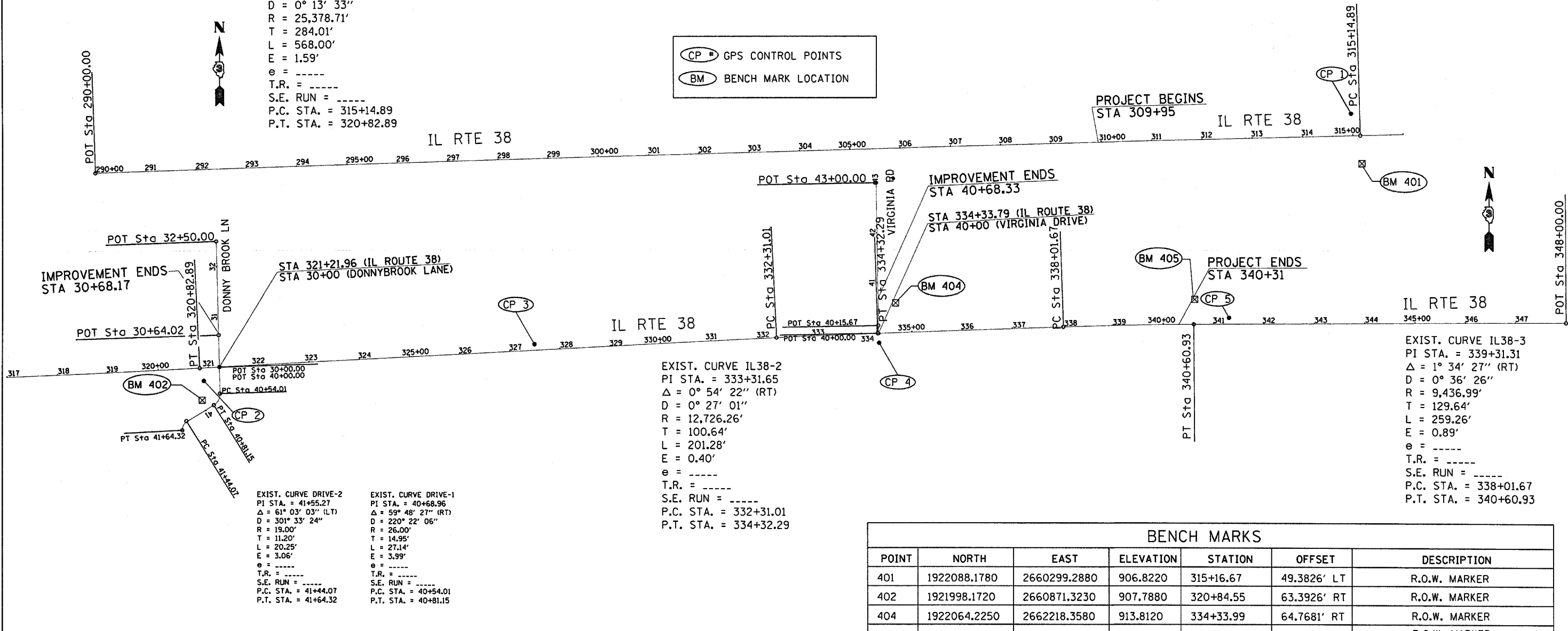


HORIZONTAL & VERTICAL CONTROL

EXIST. CURVE IL38-1
 PI STA. = 317+98.90
 $\Delta = 1^\circ 16' 56''$ (LT)
 $D = 0^\circ 13' 33''$
 $R = 25,378.71'$
 $T = 284.01'$
 $L = 568.00'$
 $E = 1.59'$
 $e = \text{-----}$
 $T.R. = \text{-----}$
 $S.E. RUN = \text{-----}$
 $P.C. STA. = 315+14.89$
 $P.T. STA. = 320+82.89$

CP # GPS CONTROL POINTS
 BM BENCH MARK LOCATION



EXIST. CURVE IL38-2
 PI STA. = 333+31.65
 $\Delta = 0^\circ 54' 22''$ (RT)
 $D = 0^\circ 27' 01''$
 $R = 12,726.26'$
 $T = 100.64'$
 $L = 201.28'$
 $E = 0.40'$
 $e = \text{-----}$
 $T.R. = \text{-----}$
 $S.E. RUN = \text{-----}$
 $P.C. STA. = 332+31.01$
 $P.T. STA. = 334+32.29$

EXIST. CURVE IL38-3
 PI STA. = 339+31.31
 $\Delta = 1^\circ 34' 27''$ (RT)
 $D = 0^\circ 36' 26''$
 $R = 9,436.99'$
 $T = 129.64'$
 $L = 259.26'$
 $E = 0.89'$
 $e = \text{-----}$
 $T.R. = \text{-----}$
 $S.E. RUN = \text{-----}$
 $P.C. STA. = 338+01.67$
 $P.T. STA. = 340+60.93$

EXIST. CURVE DRIVE-2
 PI STA. = 41+55.27
 $\Delta = 61^\circ 03' 03''$ (LT)
 $D = 301^\circ 33' 24''$
 $R = 19.00'$
 $T = 11.20'$
 $L = 20.25'$
 $E = 3.06'$
 $e = \text{-----}$
 $T.R. = \text{-----}$
 $S.E. RUN = \text{-----}$
 $P.C. STA. = 41+44.07$
 $P.T. STA. = 41+64.32$

EXIST. CURVE DRIVE-1
 PI STA. = 40+68.96
 $\Delta = 59^\circ 48' 27''$ (RT)
 $D = 220^\circ 22' 06''$
 $R = 26.00'$
 $T = 14.95'$
 $L = 27.14'$
 $E = 3.99'$
 $e = \text{-----}$
 $T.R. = \text{-----}$
 $S.E. RUN = \text{-----}$
 $P.C. STA. = 40+54.01$
 $P.T. STA. = 40+81.15$

BENCH MARKS

POINT	NORTH	EAST	ELEVATION	STATION	OFFSET	DESCRIPTION
401	1922088.1780	2660299.2880	906.8220	315+16.67	49.3826' LT	R.O.W. MARKER
402	1921998.1720	2660871.3230	907.7880	320+84.55	63.3926' RT	R.O.W. MARKER
404	1922064.2250	2662218.3580	913.8120	334+33.99	64.7681' RT	R.O.W. MARKER
405	1922196.5020	2662844.2140	910.9250	340+63.06	48.6673' LT	R.O.W. MARKER

Point 4300 N 1,921,965.8108 E 2,657,785.2255 Sta 290+00.00
 Course from 4300 to PC IL38-1 N 88° 20' 33.76" E Dist 2,514.8880

Curve IL38-1
 P.I. Station 317+98.90 N 1,922,046.7581 E 2,660,582.9544
 Delta = 1° 16' 56.40" (LT)
 Degree = 0° 13' 32.75"
 Tangent = 284.0117
 Length = 567.9997
 Radius = 25,378.7100
 External = 1.5891
 Long Chord = 567.9878
 Mid. Ord. = 1.5890
 P.C. Station 315+14.89 N 1,922,038.5442 E 2,660,299.0615
 P.T. Station 320+82.89 N 1,922,061.3233 E 2,660,866.5924
 C.C. N 1,947,406.6382 E 2,659,565.0811
 Back = N 88° 20' 33.76" E
 Ahead = N 87° 03' 37.36" E
 Chord Bear = N 87° 42' 05.56" E
 Course from PT IL38-1 to PC IL38-2 N 87° 03' 37.36" E Dist 1,148.1186

Curve IL38-2
 P.I. Station 333+31.65 N 1,922,125.3642 E 2,662,113.7101
 Delta = 0° 54' 22.31" (RT)
 Degree = 0° 27' 00.78"
 Tangent = 100.6423
 Length = 201.2804
 Radius = 12,726.2600
 External = 0.3979
 Long Chord = 201.2783
 Mid. Ord. = 0.3979
 P.C. Station 332+31.01 N 1,922,120.2029 E 2,662,013.2002
 P.T. Station 334+32.29 N 1,922,128.9352 E 2,662,214.2890
 C.C. N 1,909,410.6890 E 2,662,665.8485
 Back = N 87° 03' 37.36" E
 Ahead = N 87° 57' 59.67" E
 Chord Bear = N 87° 30' 48.52" E
 Course from PT IL38-2 to PC IL38-3 N 87° 57' 59.67" E Dist 369.3809

Curve IL38-3
 P.I. Station 339+31.31 N 1,922,146.6417 E 2,662,712.9938
 Delta = 1° 34' 26.66" (RT)
 Degree = 0° 36' 25.71"
 Tangent = 129.6382
 Length = 259.2600
 Radius = 9,436.9900
 External = 0.8904
 Long Chord = 259.2519
 Mid. Ord. = 0.8903
 P.C. Station 338+01.67 N 1,922,142.0418 E 2,662,583.4373
 P.T. Station 340+60.93 N 1,922,147.6810 E 2,662,842.6278
 C.C. N 1,912,710.9943 E 2,662,918.2853
 Back = N 87° 57' 59.67" E
 Ahead = N 89° 32' 26.33" E
 Chord Bear = N 88° 45' 13.00" E
 Course from PT IL38-3 to 4301 N 89° 32' 26.33" E Dist 739.0723
 Point 4301 N 1,922,153.6062 E 2,663,581.6764 Sta 348+00.00