

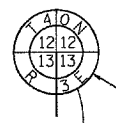
SE 1/4 OF SEC. 13, T 40 N., R. 3 E. OF 3RD P.M.



PARCEL NO. 3UA0003

JOHN J. GREEK
SEE SHEET 3 OF 3 FOR AREAS

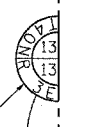
CURVE #1 DATA
P.I. STA 317+98.90
D= 1°16'56"
R= 25,378.71'
T= 284.01'
L= 568.00'
E= 1.59'
P.C. STA 315+14.89
P.T. STA 320+82.89



FOUND IRON PIPE
MONUMENT RECORD
DOC. NO. 89010933
N - 1924834.33
E - 848556.451



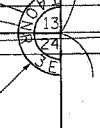
FOUND BRASS PLAQUE
MONUMENT RECORD
DOC. NO. 84015282
N - 1919845.603
E - 846958.685
262x31.71=4.34' LT



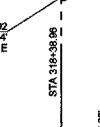
FOUND IRON PIPE
MONUMENT RECORD
DOC. NO. 89010995
N - 1922307.715
E - 849458.983



FOUND IRON PIPE
MONUMENT RECORD
DOC. NO. 2006021938
N - 1915726.747
E - 849475.455
318+39.99=73.62'



GOV'T JOG
= 73.24' (R)
N 0°22'28" W
74.10' (R)



P.O.C. 3UA0003-TE
FOUND BRASS PLAQUE
MONUMENT RECORD
DOC. NO. 890002110
N - 1919662.954
E - 849476.939
318+38.00=0.47 RT

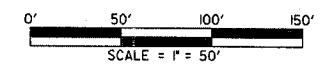


N 0°18'25" W 2915.28'
(TO SE CORNER SEC 13-40-4)



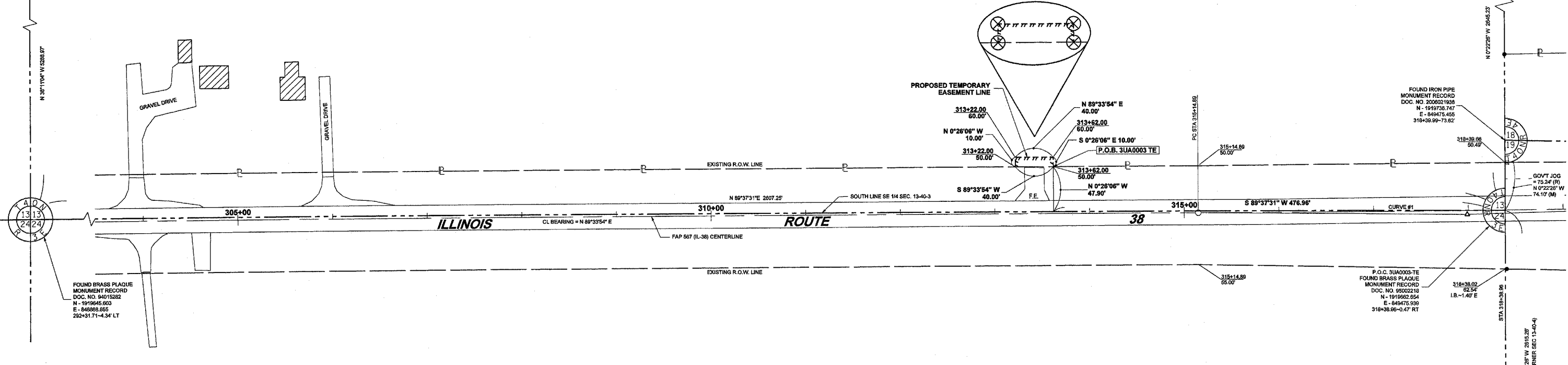
FOUND IRON BAR W/ CAP
MONUMENT RECORD
DOC. NO. 90000072
N - 1917047.543
E - 849459.957

NOTE: BEARINGS ARE REFERENCED TO GRID NORTH OF THE ILLINOIS STATE PLANE COORDINATE SYSTEM, EAST ZONE (NAD83).



RIGHT OF WAY PLANS

ROUTE FAP 567 (IL-38)
SECTION 34N & N-1
COUNTY DEKALB
JOB NO. R-93-004-06
STATION 303+00 TO 318+00
SCALE 1" = 50' SHEET NO. 1 OF 3



LEGEND

- SET 5/8" BAR WITH CAP
- SET 60D NAIL WITH RIBBON

SURVEYOR'S CERTIFICATE

I, JEFFERY S. ETSCHIED, HEREBY STATE THAT I AM A PROFESSIONAL LAND SURVEYOR OF THE STATE OF ILLINOIS AND THAT THE WITHIN PLAT IS A TRUE AND CORRECT REPRESENTATION OF A SURVEY MADE UNDER MY DIRECTION FOR THE ILLINOIS DEPARTMENT OF TRANSPORTATION.

THIS PROFESSIONAL SERVICE CONFORMS TO THE CURRENT ILLINOIS MINIMUM STANDARDS FOR A BOUNDARY SURVEY.

DATED THIS _____ DAY OF _____, A.D., 2006.

JEFFERY S. ETSCHIED
PROFESSIONAL LAND SURVEYOR NO. 35-3808
EXPIRES NOVEMBER 30, 2008

NE 1/4 OF SEC. 24, T 40 N., R. 3 E. OF 3RD P.M.