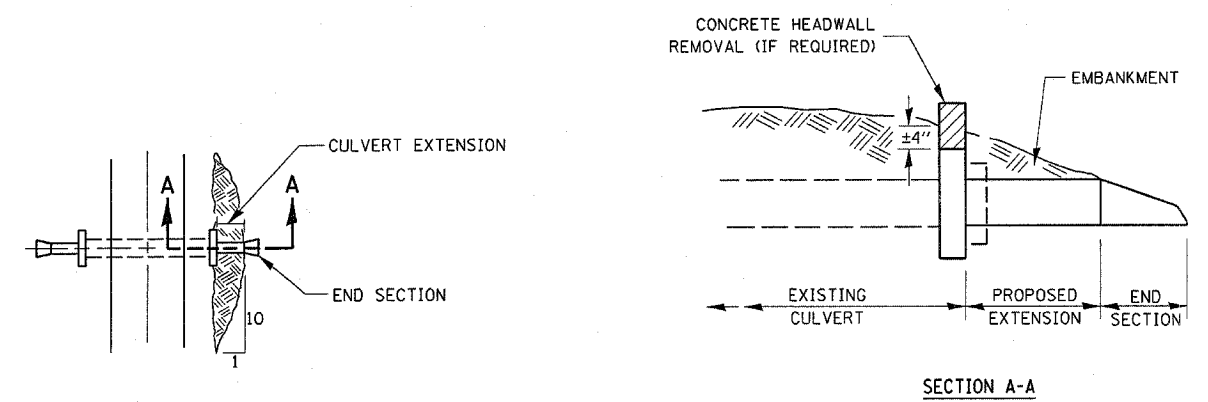
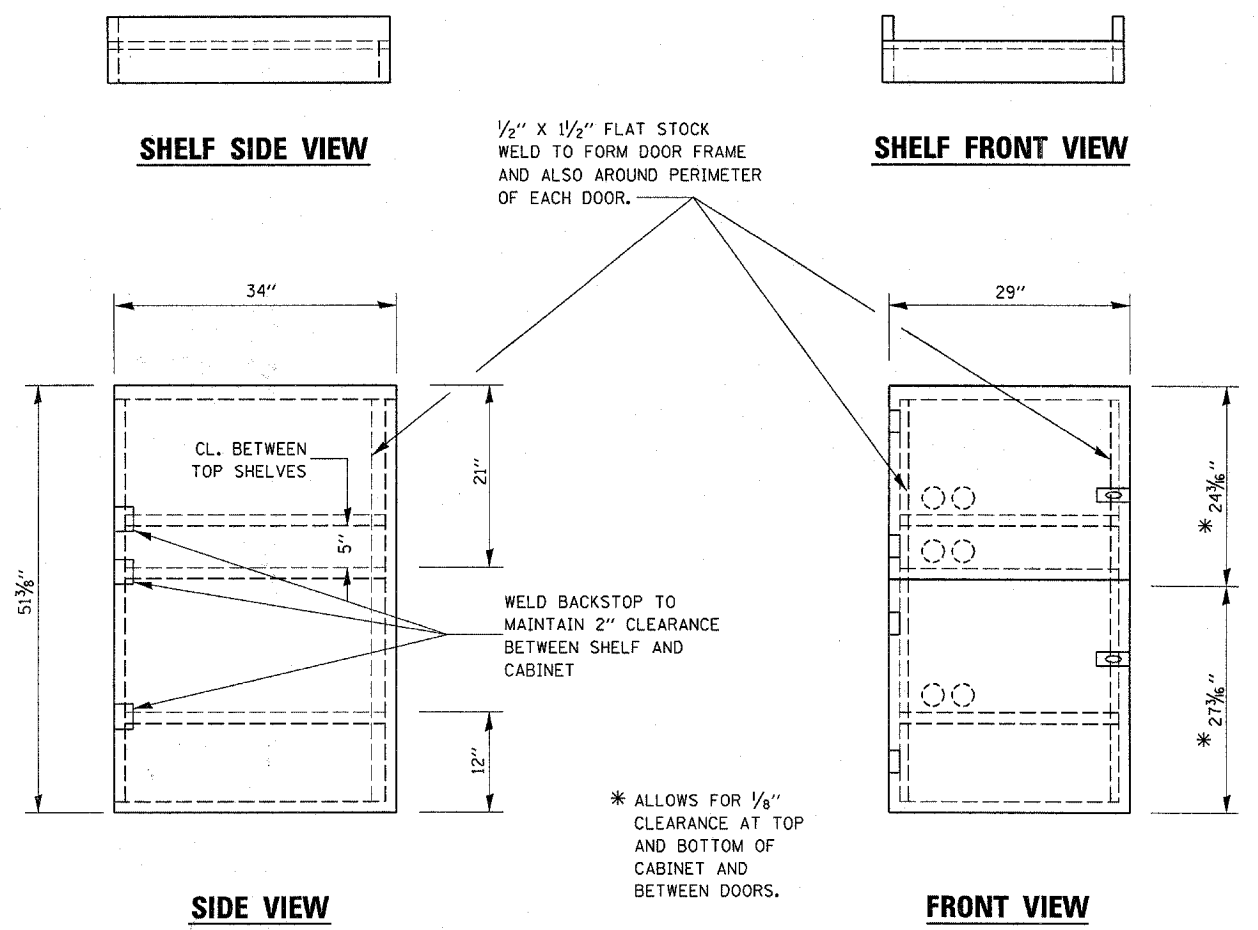


LOCATION	EXISTING CULVERT SIZE FT. x FT.	EXTENSION COLLAR		A-BAR		U-BAR		h-BAR	CONC. COLLAR CU. YD.	REINFORCEMENT BARS POUND
		WIDTH IN.	HEIGHT IN.	12 IN.	'X' IN.	'Y' IN.	18 IN.			
327+24.16	30"	54	54	12	27	48	18	1.5	32	

COLLAR DETAIL (DIRECT PIPE CULVERT EXTENSION)

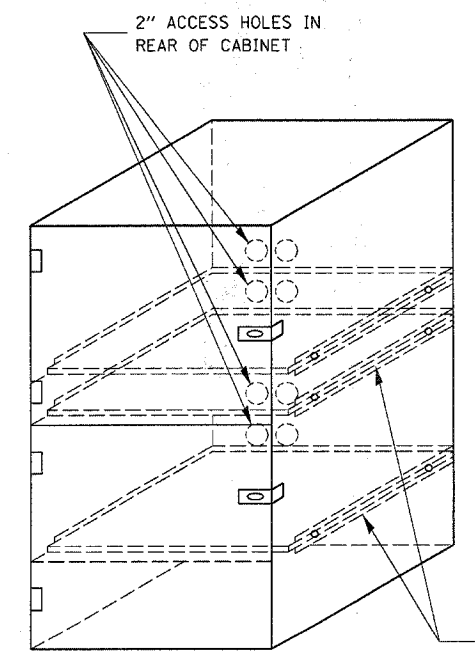


PLAN AT CULVERT EXTENSIONS



SIDE VIEW

FRONT VIEW



- NOTES:
- USE 16 GAUGE STEEL FOR CABINET.
 - THE TOP SHELF SHALL SLIDE IN OR OUT WITH THE TOP DOOR OPEN.
 - ALL HINGES AND HASPS WILL BE WELDED TO THE CABINET.
 - ALL EDGES SHALL BE GROUND SMOOTH.
 - TWO (2" DIA.) ACCESS HOLES WILL BE REQUIRED FOR EACH SHELF.
 - CABINET SHALL BE PAINTED WITH TWO COATS OF FLAT PAINT.
 - 2 EACH MATCHING KEY PADLOCKS, WITH 3 KEYS PROVIDED, MASTER MODEL 3 T OR EQUIVALENT.
 - 4 EACH PLAIN STEEL, NON-REMOVABLE PIN, NO HOLE 4" x 4" SQUARE CORNER HINGES TO BE WELDED ON.
 - 2 EACH EXTRA HEAVY, PLAIN STEEL, FIXED STAPLE, NO HOLE, 7/4" HASPS TO BE WELDED ON.

LOCKABLE COMPUTER CABINET