

F.A.P. RTE.	SECTION	COUNTY	TOTAL SHEETS	SHEET NO.
41	12 I	KANKAKEE	21	1

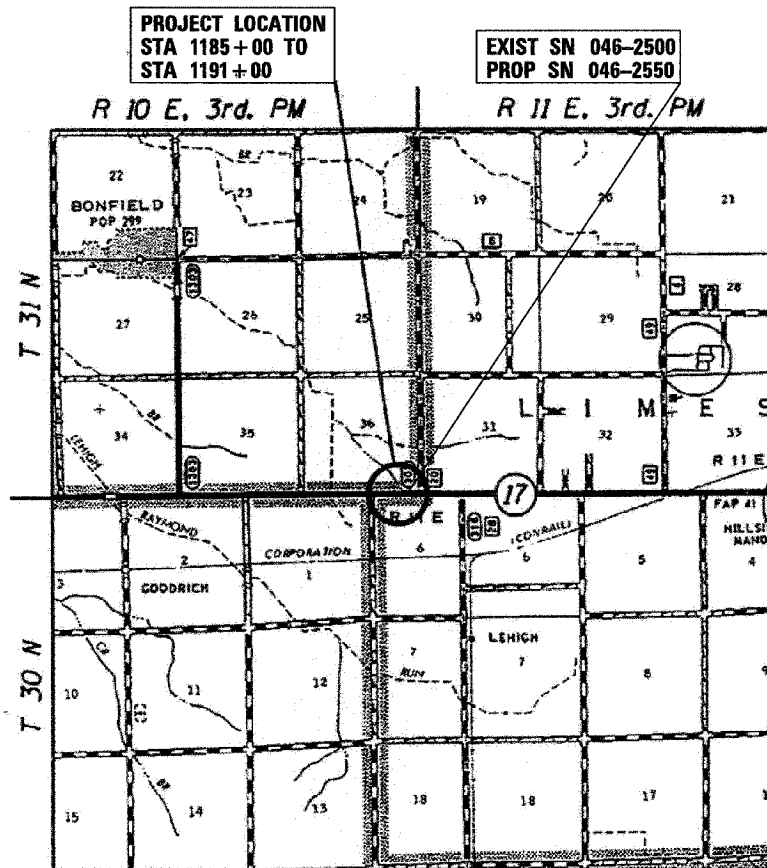
STATE OF ILLINOIS
DEPARTMENT OF TRANSPORTATION
DIVISION OF HIGHWAYS

**PLANS FOR PROPOSED
FEDERAL AID HIGHWAY**

FAP ROUTE 41 (IL 17)
SECTION 12 I
PROJECT ACF-0041(129)
KANKAKEE COUNTY

C - 93 - 066 - 07

REMOVAL OF 8'X3' BOX CULVERT AND REPLACEMENT WITH
DOUBLE 7'X3' PRECAST CONCRETE BOX CULVERT



LOCATION MAP NOT TO SCALE

GROSS LENGTH = 600 FT. = 0.11 MI.
NET LENGTH = 600 FT. = 0.11 MI.

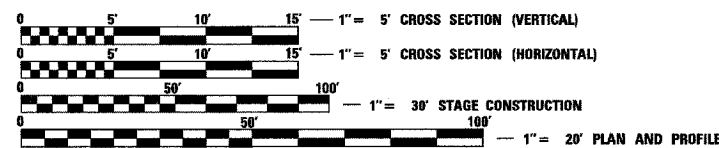
INDEX OF SHEETS

- 1 COVER SHEET
- 2 GENERAL NOTES
- 3 SUMMARY OF QUANTITIES
- 4 SCHEDULE OF QUANTITIES
- 5 TYPICAL SECTIONS
- 6 PLAN AND PROFILE (IL 17)
- 7 STAGE II TRAFFIC CONTROL PLAN
- 8 STAGE III TRAFFIC CONTROL PLAN
- 9 BOX CULVERT GENERAL PLAN
- 10-15 DETAILS
- 16-18 TEMPORARY WIDENING CROSS SECTIONS
- 19-21 FINAL CROSS SECTIONS

HIGHWAY STANDARDS

- 000001-05 STANDARD SYMBOLS, ABBREVIATIONS AND PATTERNS
- 280001-04 TEMPORARY EROSION CONTROL SYSTEM
- 406201-01 MAILBOX TURNOUT
- 482011-03 HMA SHOULDER STRIPS/SHOULDERS WITH RESURFACING OR WIDENING AND RESURFACING PROJECTS
- 515001-02 NAME PLATE FOR BRIDGES
- 542301-01 PRECAST REINFORCED CONCRETE FLARED END SECTION
- 542601 REINFORCED CONCRETE PILE ELBOW
- 701001-01 OFF-ROAD OPERATIONS, 2L, 2W MORE THAN 4.5M (15') AWAY
- 701006-02 OFF-ROAD OPERATIONS, 2L, 2W, 4.5M (15') TO 600 MM (24") FROM PAVEMENT EDGE
- 701201-02 LANE CLOSURE, 2L, 2W, DAY ONLY, FOR SPEEDS ≥ 45 MPH
- 701306-01 LANE CLOSURE, 2L, 2W, SLOW MOVING OPERATIONS, DAY ONLY, FOR SPEEDS ≥ 45 MPH
- 701311-02 LANE CLOSURE, 2L, 2W, MOVING OPERATIONS - DAY ONLY
- 701321-09 LANE CLOSURE, 2L, 2W, BRIDGE REPAIR WITH BARRIER
- 701326-02 LANE CLOSURE, 2L, 2W, PAVEMENT WIDENING, FOR SPEEDS ≥ 45 MPH
- 701901 TRAFFIC CONTROL DEVICES
- 704001-04 TEMPORARY CONCRETE BARRIER
- 781001-02 TYPICAL APPLICATIONS RAISED REFLECTIVE PAVEMENT MARKERS

MICROFILMED _____
REEL NUMBER _____
AWARDED _____
RESIDENT ENGINEER _____
AS BUILT CHANGES WERE MADE
ON THE FOLLOWING SHEETS _____



FULL SIZE PLANS HAVE BEEN PREPARED USING STANDARD ENGINEERING SCALES. REDUCED SIZED PLANS WILL NOT CONFORM TO STANDARD SCALES. IN MAKING MEASUREMENTS ON REDUCED PLANS, THE ABOVE SCALES MAY BE USED.

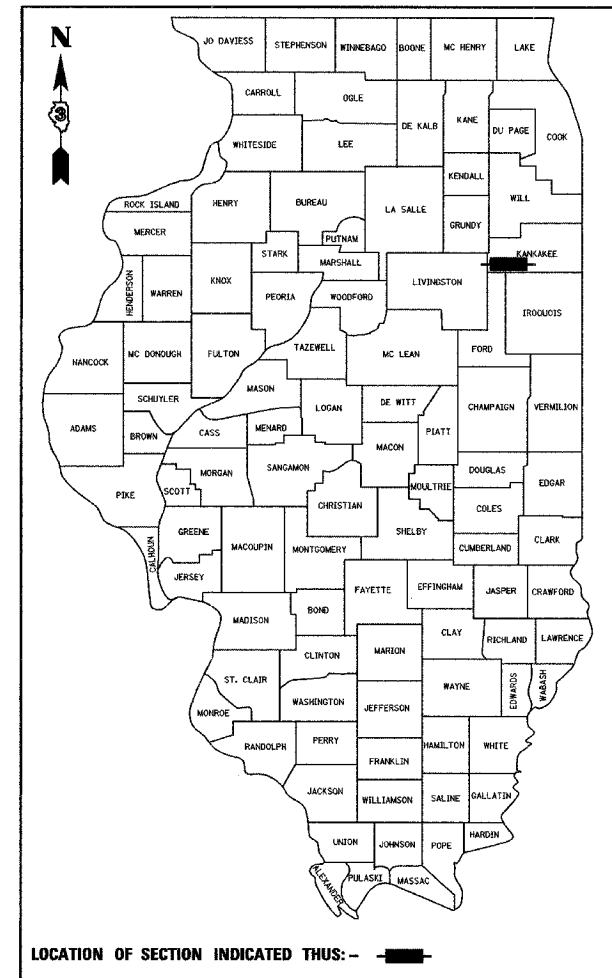
J.U.L.I.E.
JOINT UTILITY LOCATION INFORMATION FOR EXCAVATION
1-800-892-0123

DISTRICT 3 NO. (815) 434-6131
PROJECT ENGINEER: JOE KANNEL
UNIT CHIEF: MICHELE LINDEMANN
TOWNSHIP: SALINA & LIMESTONE
CONTRACT NO. 66716

JAMES K CLINARD
CHAMLIN & ASSOCIATES
815-223-3344

10/07
202807COVER.DGN

D - 93 - 028 - 07



TRAFFIC DATA
HIGHWAY CLASSIFICATION: RURAL MINOR ARTERIAL
2008 ADT 4900
DESIGN SPEED 55 MPH
POSTED SPEED 55 MPH



PROFESSIONAL DESIGN FIRM
LICENSE NO. 184-001717

CHAMLIN & ASSOCIATES
PERU ILLINOIS MORRIS

STATE OF ILLINOIS
DEPARTMENT OF TRANSPORTATION
DIVISION OF HIGHWAYS
SUBMITTED 12/13 2007
James F. Ryan
DEPUTY DIRECTOR OF HIGHWAYS, REGION ENGINEER
February 1, 2008
Eric E. Horn
INTERIM ENGINEER OF DESIGN AND ENVIRONMENT
February 1, 2008
Christine M. Reed
DIRECTOR OF HIGHWAYS, CHIEF ENGINEER

PRINTED BY THE AUTHORITY
OF THE STATE OF ILLINOIS