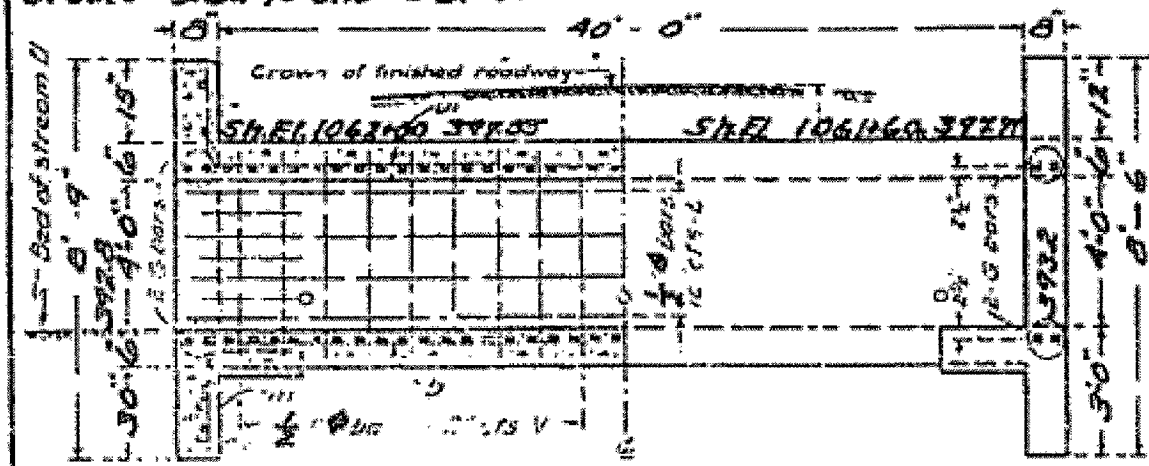
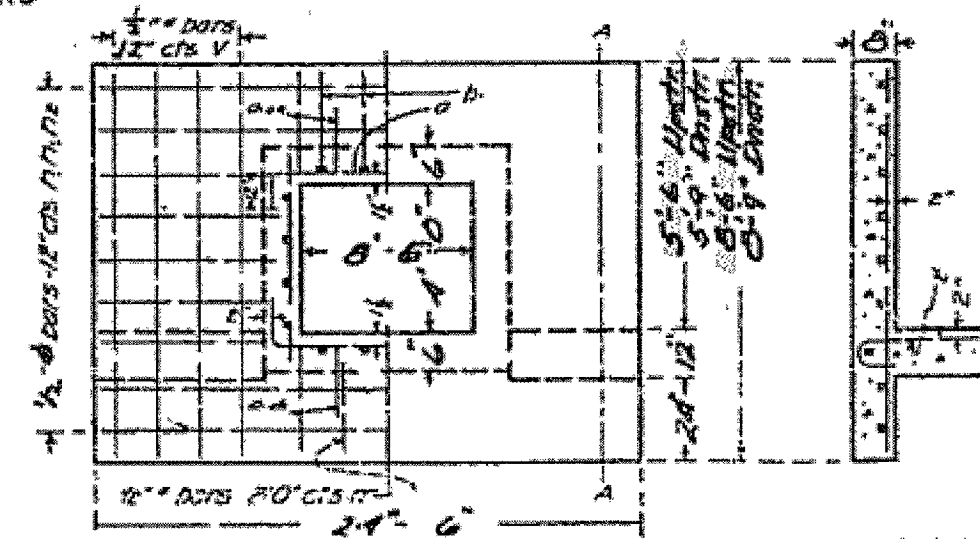


PI. 1060+50 E1.39671
 7-230 E-2.64
 Grades -3.62% and +0.61%

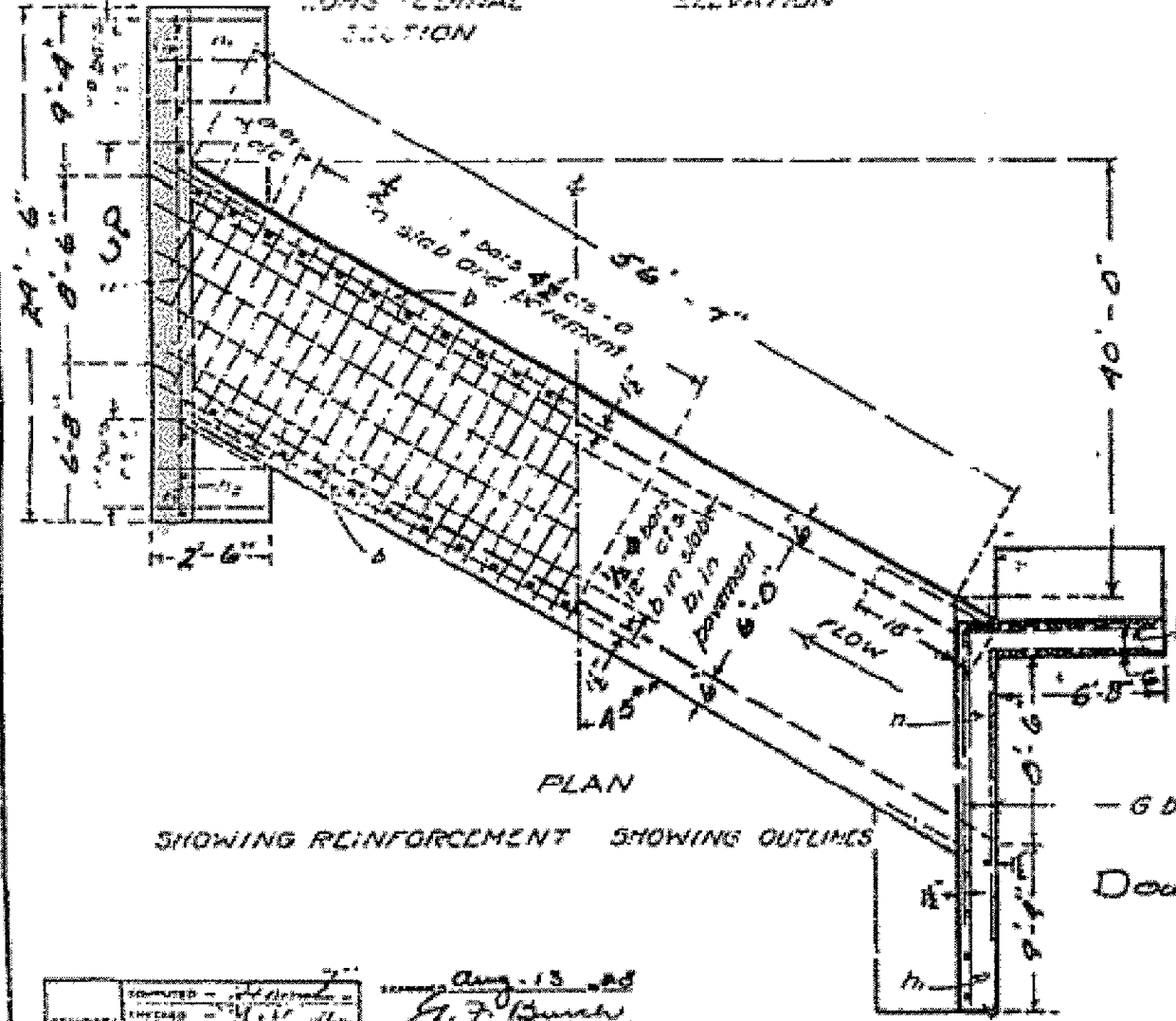
STATE OF ILLINOIS
 DEPARTMENT OF PUBLIC WORKS & BUILDINGS
 DIVISION OF HIGHWAYS



LONGITUDINAL SECTION ELEVATION



END ELEVATION SECTION A-A SHOWING REINFORCEMENT SHOWING OUTLINES



PLAN SHOWING REINFORCEMENT SHOWING OUTLINES

BILL OF MATERIAL

Bars	No.	Size	Length
V	114	3/8"	4'-9"
V	15	3/8"	8'-0"
V	15	3/8"	8'-6"
n	6	3/8"	24'-0"
m	10	3/8"	8'-0"
m	10	3/8"	10'-6"
o	274	3/8"	8'-6"
o	12	3/8"	8'-0"
o	12	3/8"	7'-0"
o	20	3/8"	5'-0"
o	39	3/8"	20'-6"
o	21	3/8"	21'-0"
r	30	3/8"	3'-0"
q	12	3/8"	3'-6"
m	4	3/8"	5'-0"
g	8	1"	17'-0"

Note: Use m bars in down stream headwall only
 Class A concrete to be used throughout
 Proportions 1:2 1/2:4
 Bend a, a, etc. bars at least 6" into headwalls

Concrete - Cu 125 34.1
 Reinforcing Steel - lbs. A330

S.N. 006-2515
 IL 26 (CHIC)
 Sta. 1061+80
 Rte. 89 Sec. 114
 Bureau County

Aug. 13 2008
 G. F. Bunch
 Designer

THIS SHEET FOR INFORMATION "ONLY"

FAP ROUTE 316 (IL 26)
 SECTION (114)
 BUREAU COUNTY
 STA. 1061+80
 S.N. 006-2515

FILE NAME = c:\projects\main08\cm314\detailed.dgn	USER NAME = woodshankr	DESIGNED - RON WOODSHANK	REVISED -	STATE OF ILLINOIS DEPARTMENT OF TRANSPORTATION	EXISTING BOX CULVERT PLANS	SCALE: SHEET NO. 1 OF 6 SHEETS STA. 1061+00 TO STA. 1063+00	F.A.P. RTE. 316	SECTION (114)	COUNTY BUREAU	TOTAL SHEETS 14	SHEET NO. 14
PLLOT SCALE = 1/8" = 1'-0"	CHECKED -	REVISED -	CONTRACT NO. 66729								
PLLOT DATE = Dec 12, 2007 - 07:42:57 AM	DATE -	REVISED -	FED. ROAD DIST. NO. ILLINOIS								