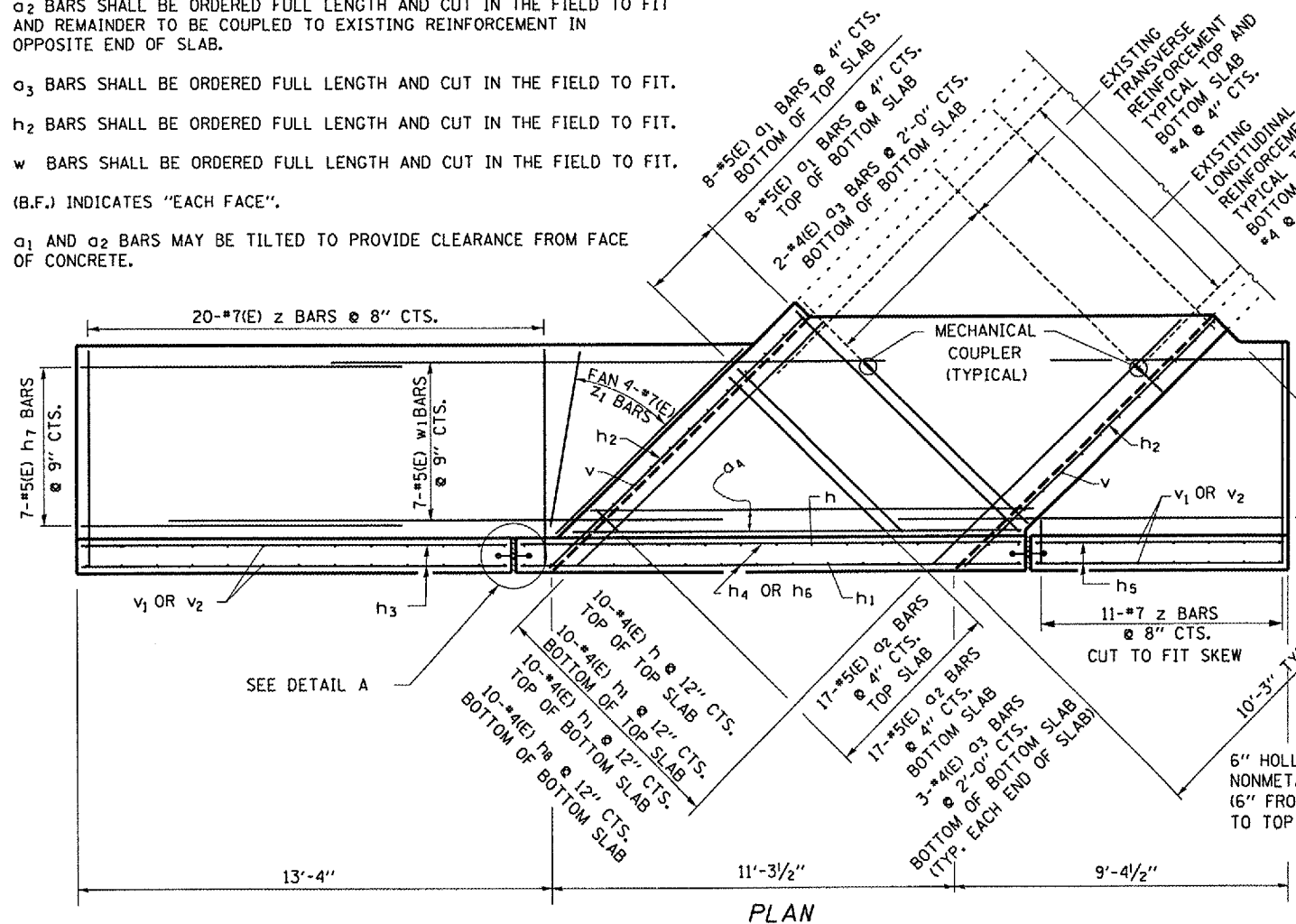


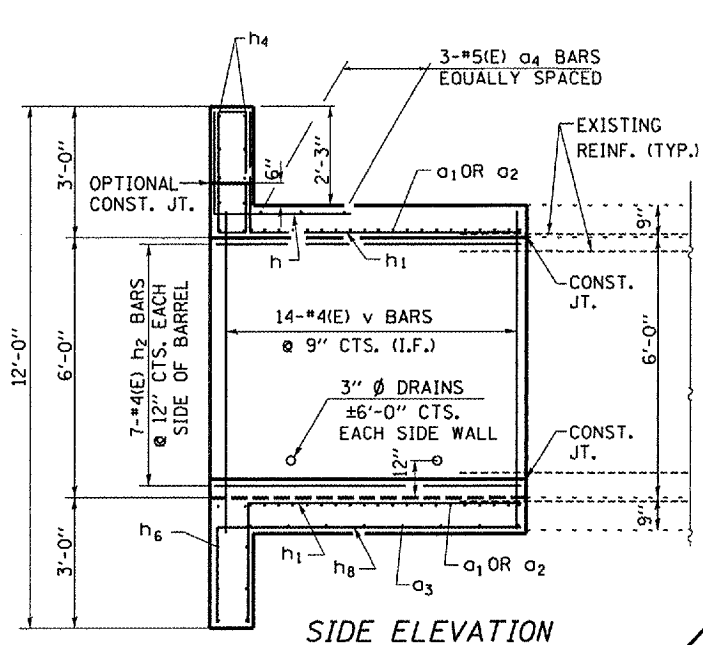
ELEVATION

NOTES

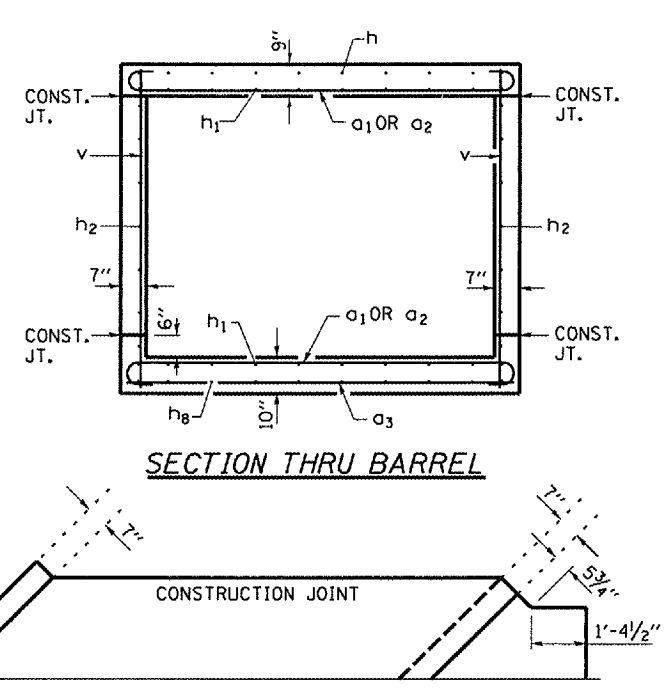
- o₁ BARS SHALL BE ORDERED FULL LENGTH AND CUT IN THE FIELD TO FIT.
- o₂ BARS SHALL BE ORDERED FULL LENGTH AND CUT IN THE FIELD TO FIT AND REMAINDER TO BE COUPLED TO EXISTING REINFORCEMENT IN OPPOSITE END OF SLAB.
- o₃ BARS SHALL BE ORDERED FULL LENGTH AND CUT IN THE FIELD TO FIT.
- h₂ BARS SHALL BE ORDERED FULL LENGTH AND CUT IN THE FIELD TO FIT.
- w BARS SHALL BE ORDERED FULL LENGTH AND CUT IN THE FIELD TO FIT.
- (B.F.) INDICATES "EACH FACE".
- o₁ AND o₂ BARS MAY BE TILTED TO PROVIDE CLEARANCE FROM FACE OF CONCRETE.



PLAN

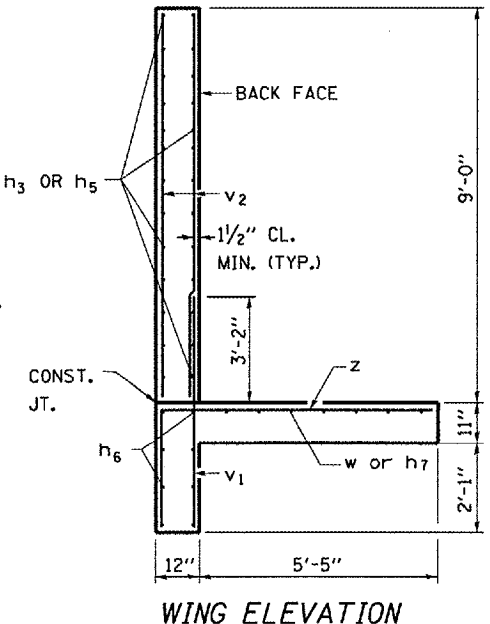


SIDE ELEVATION

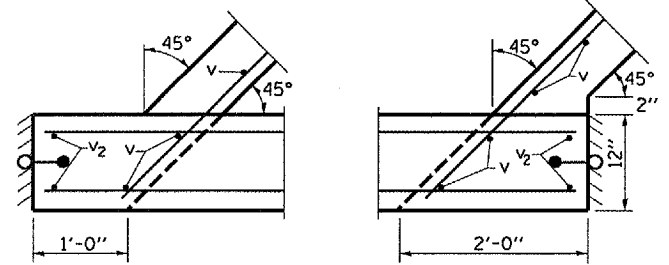


SECTION THRU BARREL

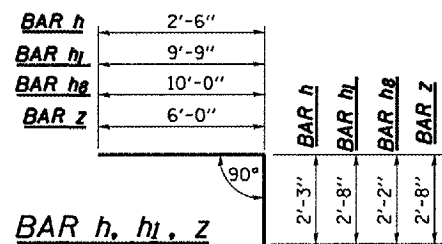
CONSTRUCTION JOINT



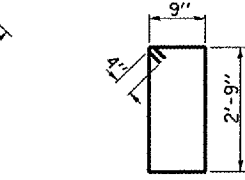
WING ELEVATION



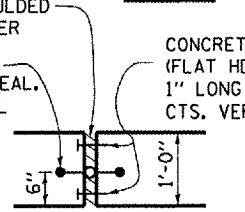
CORNER DETAILS



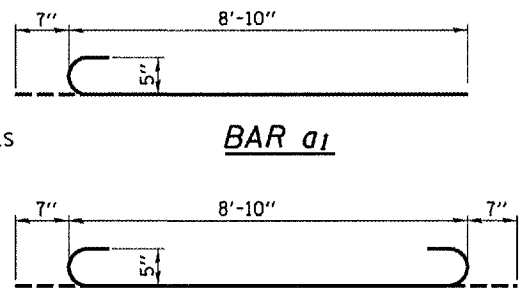
BAR h, h1, z



BAR s



DETAIL A



BAR o1

BAR o2

BILL OF MATERIAL FOR TWO ENDS

| BAR NO. | SIZE | LENGTH | SHAPE |
|--------------------------|---------|---------|-------|
| o ₁ | 32 5(E) | 9'-5" | U |
| o ₂ | 68 5(E) | 10'-0" | U |
| o ₃ | 16 4(E) | 8'-10" | U |
| o ₄ | 6 5(E) | 12'-0" | U |
| h | 20 4(E) | 4'-10" | U |
| h ₁ | 40 4(E) | 11'-5" | U |
| h ₂ | 28 4(E) | 10'-0" | U |
| h ₃ | 48 5(E) | 12'-0" | U |
| h ₄ | 20 6(E) | 13'-10" | U |
| h ₅ | 48 5(E) | 7'-10" | U |
| h ₆ | 32 5(E) | 18'-3" | U |
| h ₇ | 14 5(E) | 9'-7" | U |
| h ₈ | 20 4(E) | 12'-2" | U |
| s | 30 4(E) | 7'-8" | U |
| v | 56 4(E) | 7'-4" | U |
| v ₁ | 92 6(E) | 5'-3" | U |
| v ₂ | 92 4(E) | 8'-9" | U |
| w | 14 5(E) | 11'-0" | U |
| w ₁ | 14 5(E) | 15'-8" | U |
| z | 62 7(E) | 8'-8" | U |
| z ₁ | 8 7(E) | 6'-0" | U |
| MECHANICAL SPLICE EACH | | | 68 |
| CONCRETE BOX CULVERT | | | 44 |
| REINFORCEMENT BARS POUND | | | 7350 |
| EPOXY COATED | | | |

(E) DENOTES EPOXY COATED

FAP ROUTE 646 (IL 40)
SECTION (12)1-1
BUREAU COUNTY
STA. 112+70
S.N. 006-2523

| | | | |
|--|-------------------------|--------------------------|----------------------|
| FILE NAME = | USER NAME = woodshankr1 | DESIGNED - RON WOODSHANK | REVISED - 11/29/2007 |
| c:\projects\main\28\con315\details.dgn | | DRAWN - RON WOODSHANK | REVISED - |
| PLOT SCALE = 1/4" = 1'-0" | | CHECKED - | REVISED - |
| PLOT DATE = Dec 13, 2007 - 07:08:15 AM | | DATE - | REVISED - |

STATE OF ILLINOIS
DEPARTMENT OF TRANSPORTATION

CONCRETE BOX CULVERT

SCALE: SHEET NO. 4 OF 6 SHEETS STA. 110+10 TO STA. 115+30

| | | | | |
|------------------------------|-----------------|---------------|--------------------|--------------|
| F.A.P. RTE. 646 | SECTION (12)1-2 | COUNTY BUREAU | TOTAL SHEETS 13 | SHEET NO. 11 |
| FED. ROAD DIST. NO. ILLINOIS | | | CONTRACT NO. 66732 | |