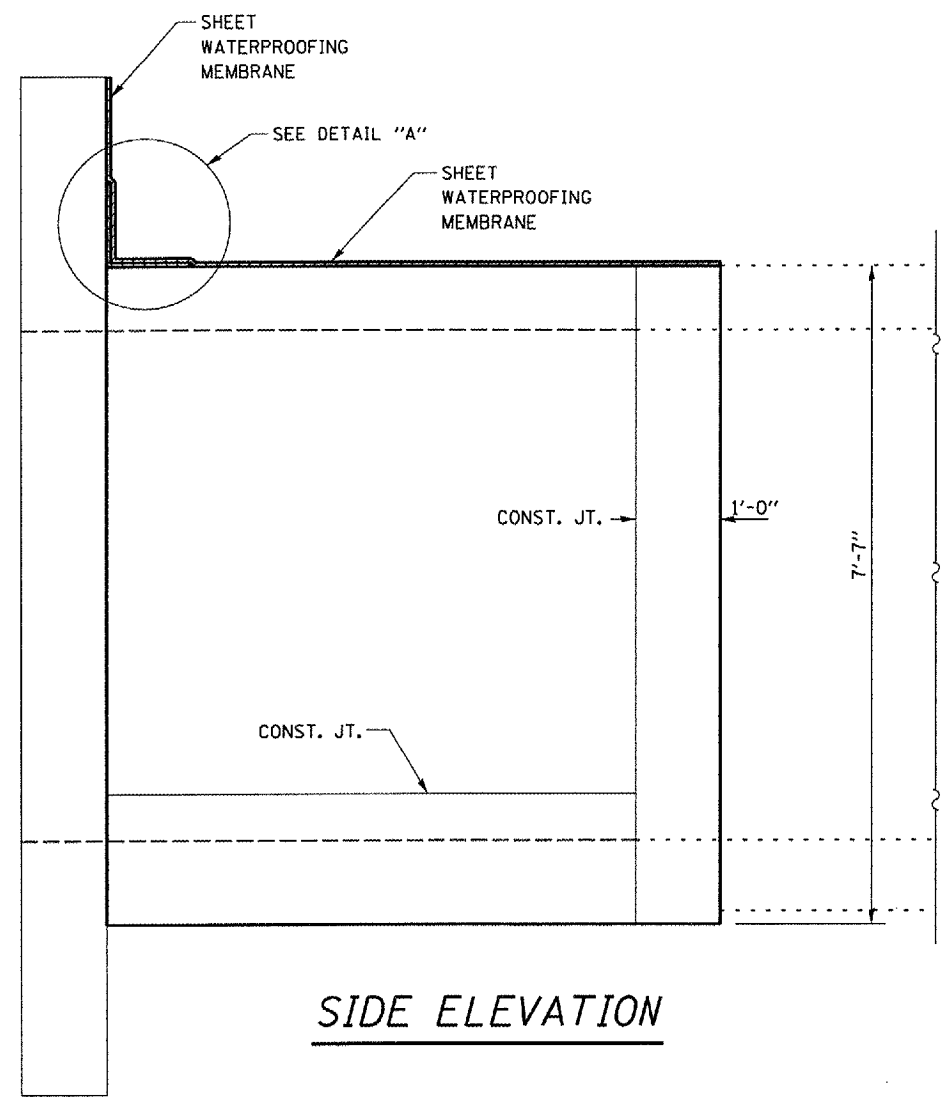
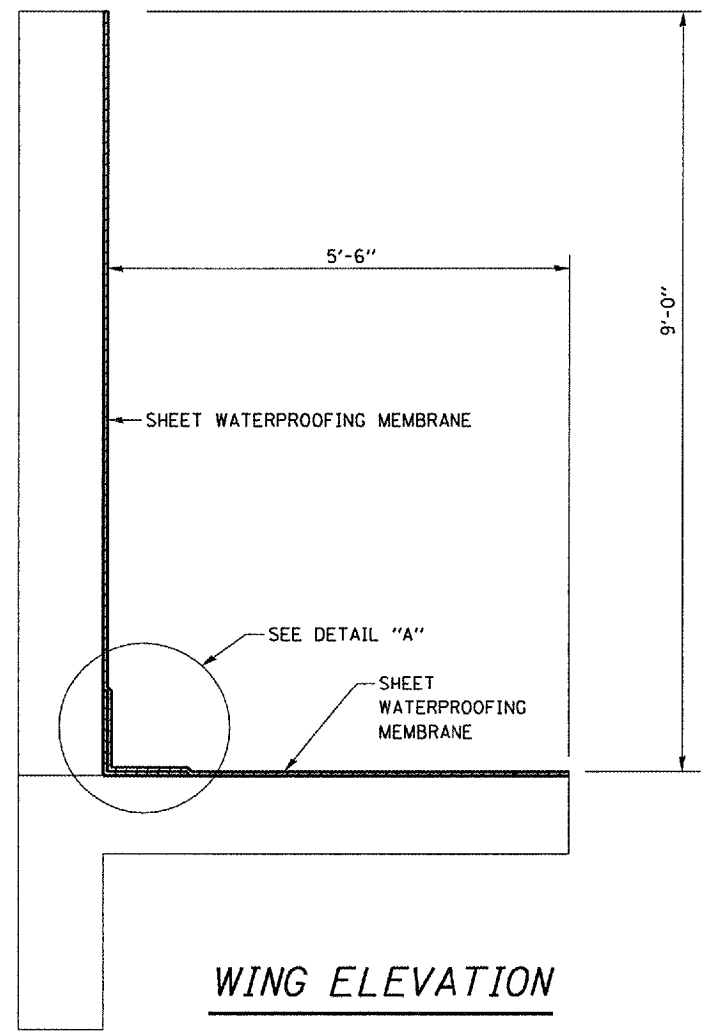


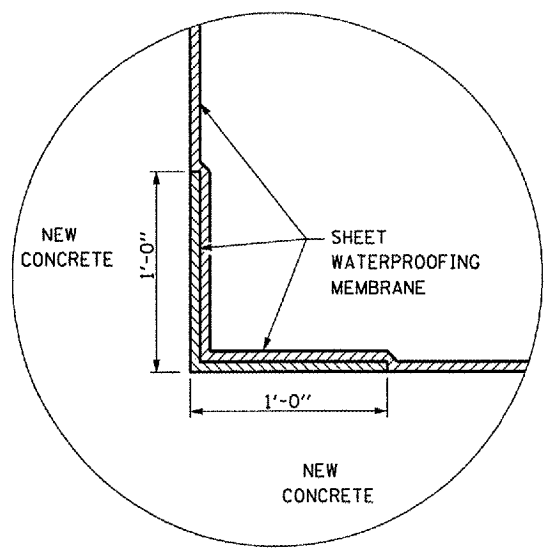
PLAN



SIDE ELEVATION



WING ELEVATION



DETAIL "A"

NOTES:

THE EXPOSED SURFACES AS INDICATED SHALL BE PROTECTED BY THE WATERPROOFING MEMBRANE AS PER THE MANUFACTURER'S RECOMENDATIONS.

A MANUFACTURER'S REPRESENTATIVE SHALL BE ON SITE DURING THE INSTALLATION OF THE WATERPROOFING MEMBRANE TO PROVIDE TECHNICAL SUPPORT WHEN REQUIRED. ALL COST INCURRED DUE TO THE ON-SITE REPRESENTATIVE SHALL NOT BE PAID FOR SEPARATELY BUT SHALL BE INCLUDED IN THE UNIT COST OF THE WATERPROOFING MEMBRANE WORK.

THE CONTRACTOR SHALL INSTALL THE WATERPROOFING MEMBRANE ACCORDING TO THE MANUFACTURER'S RECOMMENDATIONS, PLAN DETAILS AND AS DIRECTED BY THE ENGINEER.

BILL OF MATERIAL FOR TWO ENDS

SHEET WATERPROOFING	SQ. YD.	117
MEMBRANE SYSTEM		

FAP ROUTE 646 (IL 40)
SECTION (12)11-1
BUREAU COUNTY
STA. 112+70
S.N. 006-2523

FILE NAME = c:\projects\main08\cm315\details.dgn	USER NAME = woodshankr1	DESIGNED - RON WOODSHANK	REVISED - 11/29/2007	STATE OF ILLINOIS DEPARTMENT OF TRANSPORTATION	WATERPROOFING DETAILS	F.A.P. RTE. = 646	SECTION = (12)11-2	COUNTY = BUREAU	TOTAL SHEETS = 13	SHEET NO. = 12	
		DRAWN - RON WOODSHANK	REVISIONS -			SCALE: _____	SHEET NO. 5 OF 6 SHEETS	STA. 110+10 TO STA. 115+30	FED. ROAD DIST. NO. = [ILLINOIS]	CONTRACT NO. 66732	
		CHECKED -	REVISIONS -								
		DATE -	REVISIONS -								