

- STANDARDS**
- 000001-05 STANDARD SYMBOLS, ABBREVIATIONS AND PATTERNS
  - 701101-01 OFF-ROAD OPERATIONS MULTILANE, 4.5 m (15') TO 600 mm (24") FROM PAVEMENT EDGE
  - 701106-01 OFF-ROAD OPERATIONS, MULTILANE, MORE THAN 4.5 m (15') AWAY
  - 701400-02 APPROACH TO LANE CLOSURE, FREEWAY/EXPRESSWAY
  - 701401-04 LANE CLOSURE, FREEWAY/EXPRESSWAY
  - 701411-04 LANE CLOSURE, MULTILANE, AT ENTRANCE OR EXIT RAMP FOR SPEEDS P 45 MPH
  - 701901 TRAFFIC CONTROL DEVICES

**INDEX OF SHEETS**

- 1 COVERSHEET
- 2 GENERAL NOTES, SUMMARY OF QUANTITIES & TYPICAL
- 3-6 SCHEDULES

**STATE OF ILLINOIS  
DEPARTMENT OF TRANSPORTATION  
DIVISION OF HIGHWAYS**

**PROPOSED  
HIGHWAY PLANS**

**FAI ROUTE I-80  
SECTION D3 INTERSTATE SAFETY 2008-1  
PROJECT: ACHSIP-080-1(142)035  
BUREAU COUNTY**

**C - 93 - 019 - 08  
PROJECT DESCRIPTION  
HENRY COUNTY LINE TO LASALLE COUNTY LINE  
TREE REMOVAL THROUGHOUT BUREAU COUNTY**

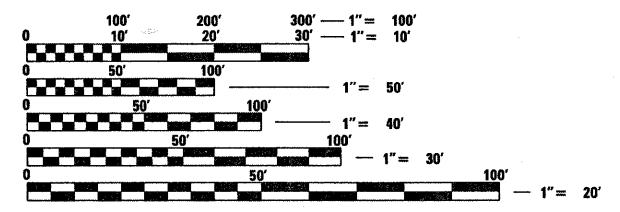
|                     |          |                    |              |           |
|---------------------|----------|--------------------|--------------|-----------|
| F.A.I. RTE.         | SECTION  | COUNTY             | TOTAL SHEETS | SHEET NO. |
| 80                  | *        | BUREAU             | 6            | 1         |
| FED. ROAD DIST. NO. | ILLINOIS | CONTRACT NO. 66739 |              |           |

\* D3 INTERSTATE SAFETY 2008-1  
**D-93-011-08**



**FUNCTION CLASSIFICATION**  
2005 ADT = 22,950  
P.V. = 59.2% S.U. = 4.4% M.U. = 36.4%

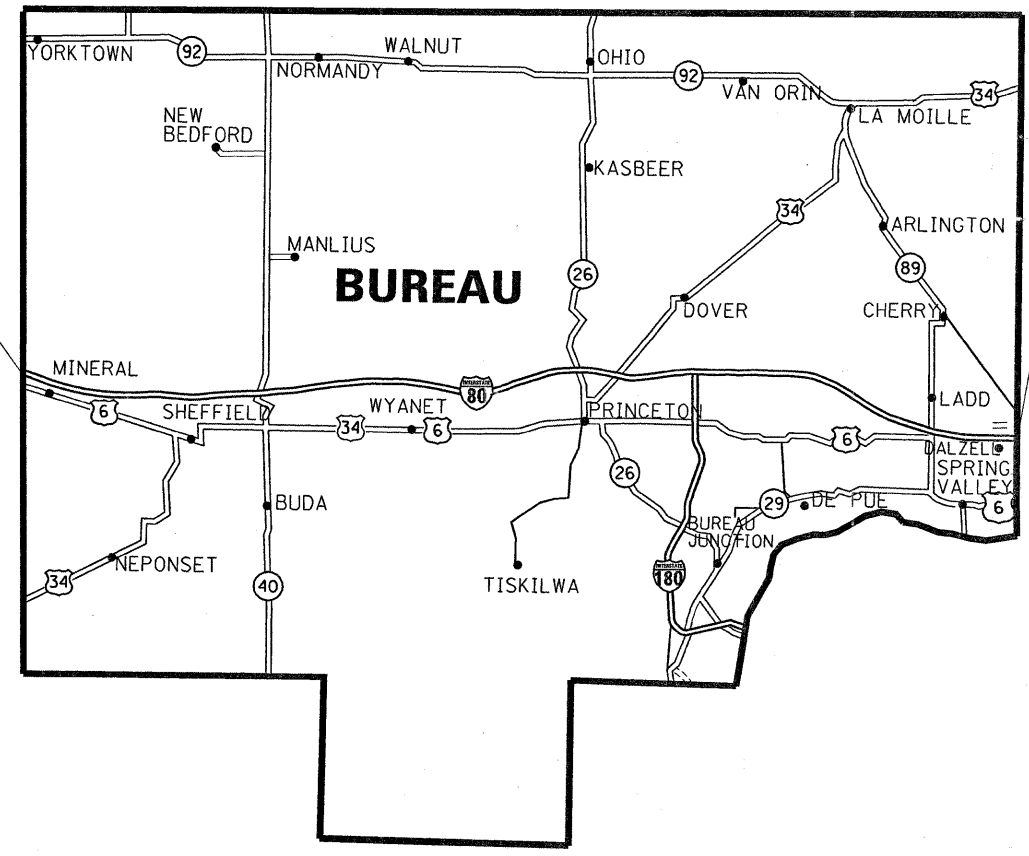
MICROFILMED \_\_\_\_\_  
REEL NUMBER \_\_\_\_\_  
AWARDED \_\_\_\_\_  
RESIDENT ENGINEER \_\_\_\_\_  
AS BUILT CHANGES WERE MADE ON THE FOLLOWING SHEETS \_\_\_\_\_



FULL SIZE PLANS HAVE BEEN PREPARED USING STANDARD ENGINEERING SCALES. REDUCED SIZED PLANS WILL NOT CONFORM TO STANDARD SCALES. IN MAKING MEASUREMENTS ON REDUCED PLANS, THE ABOVE SCALES MAY BE USED.

**J.U.L.I.E.**  
JOINT UTILITY LOCATION INFORMATION FOR EXCAVATION  
1-800-892-0123  
OR 811

**PROJECT ENGINEER JOE KANNEL  
PROJECT MANAGER PATRICK BRABOY  
DISTRICT 3 NO. (815) 434-6131  
CONTRACT NO. 66739**



**LOCATION MAP  
NOT TO SCALE**

STATE OF ILLINOIS  
DEPARTMENT OF TRANSPORTATION  
DIVISION OF HIGHWAYS

SUBMITTED \_\_\_\_\_ 20 \_\_\_\_\_

*George F. Ryan*  
DEPUTY DIRECTOR OF HIGHWAYS, REGION ENGINEER  
December 7, 20 07

*Eric E. Starns*  
ENGINEER OF DESIGN AND ENVIRONMENT  
December 7, 20 07

*Christine M. Reed*  
DIRECTOR OF HIGHWAYS, CHIEF ENGINEER

**PRINTED BY THE AUTHORITY  
OF THE STATE OF ILLINOIS**

IT DATE = Oct 24, 2007 - 02:10:51 PM  
 E NAME = c:\projects\ed01108\details.dgn  
 IT SCALE = 50.0000' / IN.  
 R NAME = braboyjc