

- STANDARDS
- 000001-05 STANDARD SYMBOLS, ABBREVIATIONS AND PATTERNS
 - 701101-01 OFF-ROAD OPERATIONS MULTILANE, 4.5 m (15') TO 600 mm (24") FROM PAVEMENT EDGE
 - 701106-01 OFF-ROAD OPERATIONS, MULTILANE, MORE THAN 4.5 m (15') AWAY
 - 701400-02 APPROACH TO LANE CLOSURE, FREEWAY/EXPRESSWAY
 - 701401-04 LANE CLOSURE, FREEWAY/EXPRESSWAY
 - 701411-04 LANE CLOSURE, MULTILANE, AT ENTRANCE OR EXIT RAMP FOR SPEEDS P 45 MPH
 - 701901 TRAFFIC CONTROL DEVICES

INDEX OF SHEETS

- 1 COVERSHEET
- 2 GENERAL NOTES, SUMMARY OF QUANTITIES & TYPICAL
- 3-6 SCHEDULES

STATE OF ILLINOIS
DEPARTMENT OF TRANSPORTATION
DIVISION OF HIGHWAYS

PROPOSED
HIGHWAY PLANS

FAI ROUTE I-80
SECTION D3 INTERSTATE SAFETY 2008-1
PROJECT: ACHSIP-080-1(142)035
BUREAU COUNTY

C - 93 - 019 - 08

PROJECT DESCRIPTION

HENRY COUNTY LINE TO LASALLE COUNTY LINE
TREE REMOVAL THROUGHOUT BUREAU COUNTY

F.A.I. RTE.	SECTION	COUNTY	TOTAL SHEETS	SHEET NO.
80	*	BUREAU	6	1
FED. ROAD DIST. NO.	ILLINOIS	CONTRACT NO. 66739		

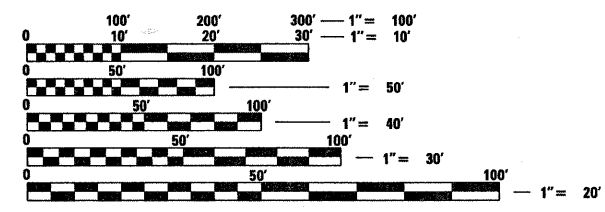
* D3 INTERSTATE SAFETY 2008-1
D-93-011-08



FUNCTION CLASSIFICATION

2005 ADT = 22,950
P.V. = 59.2% S.U. = 4.4% M.U. = 36.4%

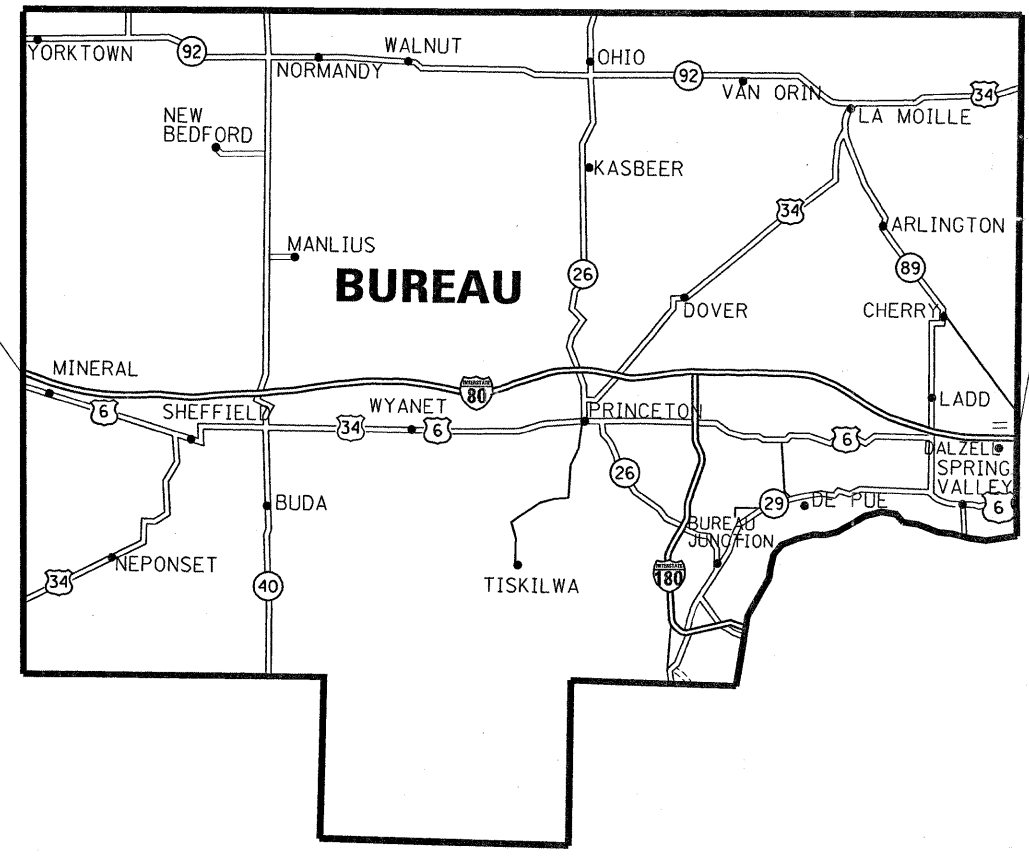
MICROFILMED _____
 REEL NUMBER _____
 AWARDED _____
 RESIDENT ENGINEER _____
 AS BUILT CHANGES WERE MADE ON THE FOLLOWING SHEETS _____



FULL SIZE PLANS HAVE BEEN PREPARED USING STANDARD ENGINEERING SCALES. REDUCED SIZED PLANS WILL NOT CONFORM TO STANDARD SCALES. IN MAKING MEASUREMENTS ON REDUCED PLANS, THE ABOVE SCALES MAY BE USED.

J.U.L.I.E.
JOINT UTILITY LOCATION INFORMATION FOR EXCAVATION
1-800-892-0123
OR 811

PROJECT ENGINEER JOE KANNEL
PROJECT MANAGER PATRICK BRABOY
DISTRICT 3 NO. (815) 434-6131
CONTRACT NO. 66739



BEGIN PROJECT @ HENRY COUNTY LINE

END PROJECT @ LASALLE COUNTY LINE

LOCATION MAP
NOT TO SCALE

STATE OF ILLINOIS
DEPARTMENT OF TRANSPORTATION
DIVISION OF HIGHWAYS

SUBMITTED _____ 20 _____

George F. Ryan
 DEPUTY DIRECTOR OF HIGHWAYS, REGION ENGINEER
 December 7, 20 07

Eric E. Starns
 INTERIM ENGINEER OF DESIGN AND ENVIRONMENT
 December 7, 20 07

Christine M. Reed
 DIRECTOR OF HIGHWAYS, CHIEF ENGINEER

PRINTED BY THE AUTHORITY
OF THE STATE OF ILLINOIS

IT DATE = Oct 24, 2007 - 02:10:51 PM
 E NAME = c:\projects\ed01108\details.dgn
 IT SCALE = 50.0000' / IN.
 R NAME = braboyjc

GENERAL NOTES

SEEDING SHALL NOT BE PERMITTED AT ANY TIME WHEN THE GROUND IS FROZEN, WET, OR IN AN UNTILLABLE CONDITION. LOCATIONS TO BE SEEDED WILL BE DETERMINED BY THE ENGINEER.

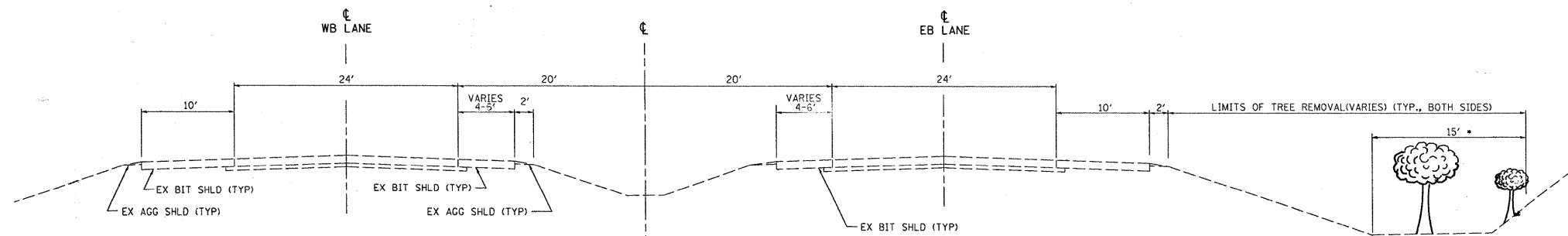
ONLY THOSE TREES DESIGNATED BY THE ENGINEER OR LISTED IN THE TREE REMOVAL SCHEDULE SHALL BE REMOVED. THE CONTRACTOR SHALL PROTECT ALL REMAINING TREES FROM DAMAGE DUE TO HIS OPERATIONS.

ABANDONED UNDERGROUND UTILITIES THAT CONFLICT WITH CONSTRUCTION SHALL BE DISPOSED OF OUTSIDE THE LIMITS OF THE RIGHT OF WAY ACCORDING TO ARTICLE 202.03 OF THE STANDARD SPECIFICATIONS AND AS DIRECTED BY THE ENGINEER. THIS WORK WILL NOT BE PAID FOR SEPARATELY, BUT SHALL BE INCLUDED IN THE COST OF EARTH EXCAVATION.

ANY REFERENCE TO A STANDARD IN THESE PLANS SHALL BE INTERPRETED TO MEAN THE EDITION AS INDICATED BY THE SUBNUMBER SHOWN IN THE LIST OF STANDARDS OR THE COPY INCLUDED IN THESE PLANS.

THE CONTRACTOR SHALL RESTORE WORK AREA AS SPECIFIED IN ARTICLE 104.06 IN THE STANDARD SPECIFICATIONS. ALL DAMAGE TO UNMOWED FIELDS SHALL BE SEEDED. RESTORATION OF THE WORK AREA SHALL NOT BE PAID FOR SEPERATELY, BUT SHALL BE INCLUDED IN THE COST OF TREE REMOVAL

SUMMARY OF QUANTITIES				
CODE NO.	ITEM	UNIT	TOTAL	90% FED. / 10% STATE
			QUANTITY	Y004
X0325889	TREE REMOVAL (4 TO 15 UNITS DIAMETER) (SPECIAL)	UNIT	17263	17263
20100210	TREE REMOVAL (OVER 15 UNITS DIAMETER)	UNIT	3648	3648
67100100	MOBILIZATION	L SUM	1	1
70100800	TRAFFIC CONTROL AND PROTECTION, STANDARD 701401	L SUM	1	1
X7011420	TRAFFIC CONTROL AND PROTECTION, STANDARD 701411	LSUM	1	1
XX004090	SHRUB REMOVAL	EACH	500	500



**TYPICAL SECTION
FAI 80**

*ALL TREES SHALL BE REMOVED FROM THE EOS TO 15' PAST THE TOE OF THE FORESLOPE

STATE OF ILLINOIS
DEPARTMENT OF TRANSPORTATION
DISTRICT THREE

PREPARED BY: [Signature]
DISTRICT STUDIES & PLANS ENGINEER

DATE: 10-24-07

EXAMINED BY: [Signature]
DISTRICT CONSTRUCTION ENGINEER

James P. Throckmold
DISTRICT MATERIALS ENGINEER

James A. Hucker
DISTRICT OPERATIONS ENGINEER

TREE REMOVAL						
STA	RT/ LT	NO.	IN	# Units 4 to 15	# Units 15 Plus	
Henry/Bureau County Line = 0+00 = Begin Section 06-01						
1+67	LT	1	20			20
		1	12	12		
		2	10	20		
		2	8	16		
		3	6	18		
2+31	LT	1	6	6		
		1	8	8		
3+36	LT	1	8	8		
4+55	LT	3	6	18		
		1	10	10		
6+90	RT	1	27			27
7+43	RT	1	4	4		
		1	5	5		
		1	6	6		
16+97	RT	1	24			24
17+68	RT	1	13	13		
18+15	LT	6	6	36		
		2	8	16		
		1	14	14		
22+64	RT	4	6	24		
		2	5	10		
23+58	RT	1	10	10		
24+15	LT	1	8	8		
		1	9	9		
		1	12	12		
24+30	LT	3	10	30		
		1	7	7		
24+60	LT	1	7	7		
		2	10	20		
		1	12	12		
24+86	LT	1	10	10		
25+15	RT	3	5	15		
25+57	LT	1	5	5		
		2	6	12		
25+90	LT	1	9	9		
26+27	LT	1	7	7		
27+10	LT	1	6	6		
27+50	LT	1	6	6		
30+63	LT	2	5	10		
		3	6	18		
33+97	RT	1	5	5		
35+51	RT	2	6	12		
		1	12	12		
36+26	RT	1	4	4		
		1	5	5		
36+57	RT	1	9	9		
37+68	RT	3	4	12		
38+38		3	5	15		
		1	24			24
38+99	RT	1	20			20
39+08	LT	2	7	14		
		1	10	10		
40+42	RT	2	6	12		
		1	8	8		
40+87	RT	2	5	10		
		2	6	12		
41+27	RT	2	6	12		
		2	8	16		
42+05	RT	2	6	12		
		2	5	10		
42+86	RT	1	26			26
44+27	LT	3	5	15		
45+00	RT	1	30			30
50+94	LT	1	6	6		
		1	8	8		
		1	10	10		
51+95	LT	2	5	10		
52+85	LT	1	5	5		
53+45	LT	1	12	12		
56+58	RT	1	17			17
57+19	RT	2	6	12		
		3	5	15		
		5	4	20		
58+18	RT	2	5	10		
62+84	LT	1	4	4		
		1	5	5		

TREE REMOVAL						
STA	RT/ LT	NO.	IN	# Units 4 to 15	# Units 15 Plus	
64+78	LT	4	4	16		
63+15	RT	3	5	15		
73+58	LT	3	6	18		
		1	8	8		
76+69	LT	1	8	8		
		1	10	10		
		2	6	12		
78+44	LT	3	5	15		
85+64	LT	1	10	10		
87+96	LT	3	8	24		
88+34	LT	1	7	7		
		1	8	8		
		3	10	30		
66+82	RT	1	4	4		
		1	5	5		
68+80	RT	2	6	12		
		1	8	8		
70+22	RT	3	6	18		
71+00	RT	1	6	6		
		3	8	24		
88+39	RT	2	6	12		
		2	8	16		
88+79	LT	1	12	12		
		5	10	50		
		1	7	7		
89+87	RT	1	24			24
90+47	LT	1	6	6		
		1	10	10		
91+00	LT	1	8	8		
		1	10	10		
		1	13	13		
91+71	LT	1	11	11		
		1	15	15		
93+02	RT	12	4	48		
		5	5	25		
93+15	LT	3	6	18		
		1	8	8		
94+87	LT	1	6	6		
		1	8	8		
		1	10	10		
96+47	RT	4	6	24		
		2	5	10		
105+01	RT	2	4	8		
		4	5	20		
		4	6	24		
106+11	RT	2	6	12		
		1	12	12		
106+62	RT	1	18			18
107+10	LT	6	4	24		
		6	5	30		
		6	6	36		
		1	8	8		
111+31	RT	2	4	8		
		3	5	15		
		1	6	6		
		1	8	8		
111+89	RT	1	16			16
115+39	LT	1	8	8		
118+70	RT	9	6	54		
		3	8	24		
120+90	RT	1	12	12		
122+60	LT	1	7	7		
		3	5	15		
123+60	LT	1	8	8		
128+41	LT	1	24			24
130+66	LT	2	6	12		
		1	5	5		
132+70	LT	2	5	10		
133+03	RT	2	4	8		
		3	5	15		
		1	6	6		
133+46	RT	4	5	20		
		2	6	12		

TREE REMOVAL						
STA	RT/ LT	NO.	IN	# Units 4 to 15	# Units 15 Plus	
134+15	RT	1	24			24
134+45	LT	1	5	5		
135+17	RT	1	26			26
135+43	RT	1	4	4		
		1	5	5		
		1	6	6		
136+70	LT	3	5	15		
		6	6	36		
137+82	LT	1	6	6		
		2	5	10		
138+33	LT	1	6	6		
		1	12	12		
		1	7	7		
139+97	RT	3	4	12		
		5	5	25		
		4	6	24		
140+03	LT	1	5	5		
140+85	RT	1	7	7		
		1	14	14		
141+40	RT	1	6	6		
		1	7	7		
		1	14	14		
141+66	RT	1	6	6		
141+95	RT	1	16			16
		1	6	6		
144+65	RT	1	8	8		
		1	9	9		
		2	6	12		
145+20	RT	1	6	6		
		1	8	8		
		3	5	15		
146+74	RT	7	4	28		
		3	5	15		
147+53	LT	1	7	7		
147+57	RT	1	5	5		
		1	8	8		
		1	6	6		
147+93	LT	1	5	5		
148+20	RT	1	5	5		
		5	6	30		
		1	7	7		
		2	8	16		
		2	12	24		
150+14	LT	1	15	15		
		1	30			30
		2	4	8		
152+40	LT	1	8	8		
154+10	LT	1	6	6		
		2	8	16		
		1	5	5		
155+62	LT	1	18			18
157+78	LT	1	24			24
158+39.88	LT	4	8	32		
160+25	RT	1	10	10		
161+44	RT	2	12	24		
		2	6	12		
162+60	RT	1	4	4		
		2	5	10		
		1	6	6		
167+41	RT	1	5	5		
		1	6	6		
		1	6	6		
167+25-	LT	1	10	10		
168+75		4	5	20		
		2	4	8		
		1	15	15		
		1	22			22
169+20-	LT	1	8	8		
170+60		5	6	30		
		5	5	25		
		5	4	20		
175+62	RT	1	7	7		
176+18	RT	1	9	9		
177+08	RT	1	15	15		

TREE REMOVAL						
STA	RT/ LT	NO.	IN	# Units 4 to 15	# Units 15 Plus	
177+09	LT	3	5	15		
180+10	LT	1	13	13		
185+18	RT	1	7	7		
186+90	RT	2	4	8		
		2	5	10		
		2	12	24		
		2	6	12		
188+73	RT	2	5	10		
		1	6	6		
		1	8	8		
191+69	RT	2	4	8		
		1	26			26
192+47	RT	1	13	13		
		3	4	12		
		3	5	15		
195+25	LT	1	30			30
		3	6	18		
195+69	LT	4	6	24		
195+98	LT	1	6	6		
196+18	RT	1	8	8		
		1	20			20
200+75-	LT	2	8	16		
201+27		5	6	30		
202+00	RT/LT	3	4	12		
204+52	RT	3	5	15		
		3	6	18		
		2	6	12		
207+70-	LT	2	10	20		
209+23		5	8	40		
		15	6	90		
210+09	LT	3	6	18		
		1	10	10		
212+18	RT	3	4	12		
		4	5	20		
		5	6	30		
213+19	RT	4	6	24		
		2	8	16		
213+55	LT	1	6	6		
		1	12	12		
213+89	LT	2	5	10		
213+90	RT	2	6	12		
		1	8	8		

TREE REMOVAL					
STA	RT/ LT	NO.	IN	# Units	# Units
				4 to 15	15 Plus
End Section 06-1 = 266+02.9					
Begin Section 06-2 = 266+02.9					
267+56	LT	1	24		24
272+50	RT	1	6	6	
		1	5	5	
273+88	RT	1	6	6	
276+45	LT	1	6	6	
		1	13	13	
		1	25		25
279+77	RT	1	20		20
280+83	RT	1	6	6	
		1	8	8	
		1	10	10	
		1	12	12	
		1	18		18
281+95	LT	1	11	11	
286+30	LT	1	13	13	
287+57	LT	1	11	11	
290+58	RT	1	6	6	
292+74	LT	1	13	13	
293+94	LT	1	16		16
295+70	LT	15	4	60	
		5	5	25	
297+85	RT	1	11	11	
300+40	LT	1	10	10	
308+47	LT	1	10	10	
		1	6	6	
309+64	LT	1	12	12	
311+01	RT	2	6	12	
		2	8	16	
		2	10	20	
311+69	RT	1	17		17
316+98-	LT	1	10	10	
317+61		1	34		34
		4	6	24	
		2	8	16	
318+11	LT	1	16		16
		5	8	40	
318+85	LT	3	4	12	
		3	5	15	
		2	6	12	
		1	8	8	
320+00	LT	1	12	12	
		1	8	8	
		1	6	6	
320+62	LT	1	8	8	
320+92	LT	4	4	16	
		1	14	14	
321+24	RT	1	6	6	
323+33	LT	4	4	16	
328+48	RT	1	25		25
330+00	LT	1	16		16
331+10	LT	1	14	14	
336+90	LT	10	6	60	
337+77	LT	4	6	24	
338+00	LT	1	10	10	
		3	6	18	
		1	8	8	
338+26	RT	1	5	5	
341+63	LT	1	24		24
342+38.4	RT/LT	1	6	6	
		1	12	12	
343+76	RT	1	5	5	
344+67	RT	1	6	6	
345+06-	LT	1	10	10	
346+95		2	8	16	
		6	6	36	
		6	5	30	
		6	4	24	
347+41	RT	2	4	8	
		3	5	15	
		2	6	12	
349+40	LT	2	5	10	
		1	6	6	

TREE REMOVAL					
STA	RT/ LT	NO.	IN	# Units	# Units
				4 to 15	15 Plus
349+70	RT	2	5	10	
		3	6	18	
351+14	LT	1	4	4	
351+28	RT	1	6	6	
		1	7	7	
351+59	LT	1	8	8	
		1	6	6	
353+53	RT	1	6	6	
		1	8	8	
354+50	RT	1	6	6	
360+00-	LT	2	10	20	
362+25		3	8	24	
		5	6	30	
		5	5	25	
		5	4	20	
364+25	LT	4	6	24	
364+70	LT	2	5	10	
		3	6	18	
		1	8	8	
365+13	LT	2	5	10	
		2	6	12	
365+80	LT	1	8	8	
366+56	LT	1	7	7	
366+80	LT	1	10	10	
		1	8	8	
		2	6	12	
		2	5	10	
367+25	LT	3	4	12	
		1	5	5	
370+00	LT	3	6	18	
375+00	RT	1	5	5	
		3	6	18	
		2	8	16	
		1	10	10	
		1	12	12	
		1	14	14	
377+12	RT	2	4	8	
		1	6	6	
378+40	RT	1	6	6	
		2	8	16	
379+40	LT	1	10	10	
		2	8	16	
380+72	RT	1	9	9	
382+50	LT	1	10	10	
		1	8	8	
385+77	RT	1	6	6	
386+92	RT	1	6	6	
388+09	RT	1	17		17
389+06	RT	1	4	4	
		1	5	5	
		1	6	6	
390+67	LT	Sign			
395+50	LT	1	10	10	
		1	8	8	
		2	5	10	
		2	6	12	
398+54	LT	1	12	12	
399+35	RT	1	8	8	
399+50	LT	2	6	12	
		2	5	10	
400+98	RT	2	6	12	
		1	8	8	
401+60-	LT	10	6	60	
405+00		10	5	50	
		30	4	120	
405+05	RT	2	6	12	
405+40	LT	2	5	10	
		2	4	8	
406+14	RT	2	6	12	
		1	7	7	
		1	17		17
406+88	RT	2	4	8	

TREE REMOVAL					
STA	RT/ LT	NO.	IN	# Units	# Units
				4 to 15	15 Plus
408+12	RT	3	5	15	
		2	6	12	
408+76	RT	1	15	15	
409+32	RT	1	14	14	
410+23	LT	1	8	8	
		1	6	6	
410+52	LT	1	5	5	
		2	6	12	
410+96-	RT	30	4	120	
418+86		25	5	125	
		5	9	45	
		15	6	90	
		15	7	105	
		10	8	80	
412+70-	LT	1	12	12	
420+64		4	8	32	
		25	6	150	
		25	5	125	
		25	4	100	
421+50	LT	1	5	5	
		1	6	6	
428+96	RT	2	10	20	
430+29	RT	3	6	18	
430+70	RT	3	6	18	
		2	5	10	
430+94	RT	2	8	16	
		1	6	6	
431+17	RT	1	6	6	
431+25	LT	Sign			
431+60	LT	2	8	16	
		2	6	12	
431+99	RT	3	6	18	
432+20	LT	4	5	20	
		3	6	18	
		1	10	10	
		1	8	8	
		1	6	6	
		1	10	10	
432+35	RT	2	6	12	
432+62	RT	1	6	6	
432+85	RT	1	10	10	
433+45	LT	2	4	8	
		1	5	5	
		1	12	12	
		4	10	40	
433+95	LT	3	6	18	
		1	10	10	
		1	8	8	
		1	12	12	
434+25	RT	1	8	8	
434+55	LT	1	8	8	
		1	10	10	
434+79	RT	2	8	16	
		1	6	6	
434+98	RT	2	6	12	
435+19	LT	1	8	8	
		1	6	6	
435+27	RT	3	6	18	
		1	8	8	
435+50	LT	2	6	12	
435+85	LT	1	12	12	
436+20	LT	1	8	8	
		1	6	6	
437+47	LT	1	36		36
438+53	LT	1	12	12	
439+03	LT	3	6	18	
439+04	RT	1	8	8	
439+32	LT	1	4	4	
		1	5	5	
439+65	LT	1	5	5	
442+42	LT	2	5	10	

TREE REMOVAL					
STA	RT/ LT	NO.	IN	# Units	# Units
				4 to 15	15 Plus
443+37	LT	1	10	10	
		1	24		24
446+57	LT	2	4	8	
		1	5	5	
		1	6	6	
447+33	LT	2	4	8	
		1	5	5	
448+00	LT	1	6	6	
449+25	RT	1	14	14	
450+22	RT	1	12	12	
450+38	LT	5	5	25	
450+87	RT	1	14	14	
		1	10	10	
453+03	LT	1	24		24
453+51	LT	1	30		30
483+74-	LT	5	5	25	
484+95		4	6	24	
		2	8	16	
		1	12	12	
		1	10	10	
		1	11	11	
487+95	LT	1	8	8	
489+60	LT	3	6	18	

TREE REMOVAL					
STA	RT/ LT	NO.	IN	# Units	# Units
				4 to 15	15 Plus
1663+99	LT	1	15	15	
		1	8	8	
		1	10	10	
		1	12	12	
1664+59	LT	1	12	12	
1671+00	LT	•••			
1675+25	RT	1	10	10	
1701+31	RT	1	15	15	
1702+00	RT	2	24		48
1726+40	RT	6	6	36	
1727+00	RT	1	10	10	
1749+90	LT	1	8	8	
		1	10	10	
1753+48	LT	1	18		18
		1	12	12	
1767+98	LT	1	8	8	
1768+57	LT	1	8	8	
		1	10	10	
1770+10	LT	1	8	8	
1773+78-	RT/LT	•••			
1780+30	LT	1	24		24
		1	20		20
		5	12	60	
		12	10	120	
		15	8	120	
		13	6	78	
		3	5	15	
1783+30	LT	2	8	16	
		1	6	6	
1792+20	LT	1	11	11	
1792+89	LT	2	6	12	
1794+20	LT	1	14	14	
		2	10	20	
		3	8	24	
		3	6	18	
1795+68	LT	2	12	24	
		1	10	10	
		1	6	6	
		1	16		16
1811+38	LT	2	15	30	
1814+71	LT	1	12	12	
End Section 06-7 = 1815+21.64 BK					
Begin Section 06, 50-8 = 275+00 AH					
277+50	LT	1	10	10	
278+25	LT	1	6	6	
280+00	RT	6	10	60	
		1	12	12	
281+0	RT	1	10	10	
283+60	LT	1	10	10	
284+57	RT	Sign			
286+50	LT	1	20		20
299+15	LT	1	8	8	
344+00	LT	1	6	6	
351+20	RT	Sign			
353+90	LT	2	5	10	
359+75	LT	1	10	10	
361+42	LT	1	14	14	
		1	7	7	
365+00	LT	8	6	48	
		2	8	16	
		1	5	5	
		5	10	50	
369+45	LT	1	10	10	
369+54	RT	Sign			
376+70	LT	2	6	12	
381+66	LT	1	7	7	
384+50	LT	1	12	12	
		1	16		16
		2	10	20	
		3	8	24	
		7	5	35	

TREE REMOVAL						
STA	RT/ LT	NO.	IN	# Units	# Units	
				4 to 15	15 Plus	
384+70	RT/LT	•••	11	6	66	
			1	8	8	
			7	6	42	
			1	12	12	
			1	18		18
401+55	LT	2	8	16		
406+69	LT	1	8	8		
414+62	LT	•••				
424+78	LT	1	6	6		
430+00	RT	2	8	16		
433+06	LT	1	6	6		
433+42	LT	1	5	5		
442+38	LT	1	5	5		
453+86	LT	1	6	6		
			1	10	10	
Bureau/LaSalle County Line = 462+39						
465+97	LT	2	5	10		
468+85	LT	1	8	8		
			1	6	6	
482+35	LT	1	7	7		
483+76	LT	1	5	5		
513+70	LT	1	8	8		
514+50	LT	1	6	6		
522+00	LT	1	6	6		
522+30	LT	1	14	14		
522+65	LT	1	16		16	
526+26	LT	1	10	10		
526+50	LT	2	6	12		
			2	8	16	
528+75	LT	2	6	12		
			1	5	5	
531+39	LT	1	6	6		
			1	8	8	
End Section 06, 50-8 = 549+00						
PROJECT	TOTALS			Units 4-15 17263	Units > 15 3648	

FILE NAME = c:\projects\ed81188\detals.dgn

USER NAME = braboypc
 PLOT SCALE = 50.0000' / IN.
 PLOT DATE = Oct 24, 2007 - 02:12:13 PM

DESIGNED - ---
 DRAWN - ---
 CHECKED - ---
 DATE - ---

REVISED - ---
 REVISED - ---
 REVISED - ---
 REVISED - ---

STATE OF ILLINOIS
 DEPARTMENT OF TRANSPORTATION

SCHEDULES

SCALE: _____ SHEET NO. ___ OF ___ SHEETS STA. _____ TO STA. _____

F.A.I. RTE.	SECTION	COUNTY	TOTAL SHEETS	SHEET NO.
80	*	BUREAU	6	6
D3 INTERSTATE SAFETY 2008-1			CONTRACT NO. 66739	
FED. ROAD DIST. NO. - [ILLINOIS] FED. AID PROJECT				