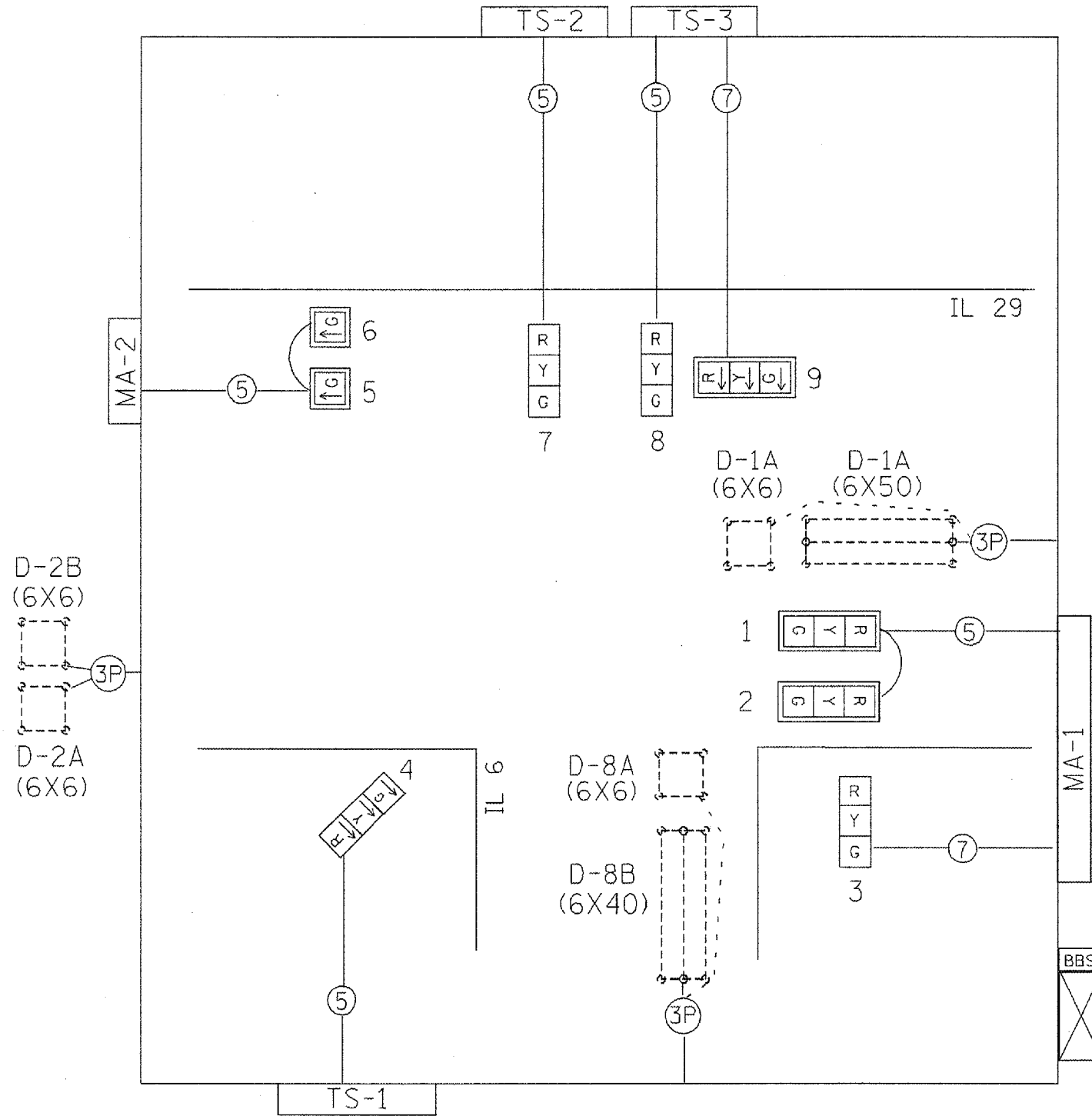


F.A.P. RTE.	SECTION	COUNTY	TOTAL SHEETS	SHEET NO.
318	72-16-URS	PEORIA	89	56
STA.		TO STA.		
FED. ROAD DIST. NO.		ILLINOIS FED. AID PROJECT		

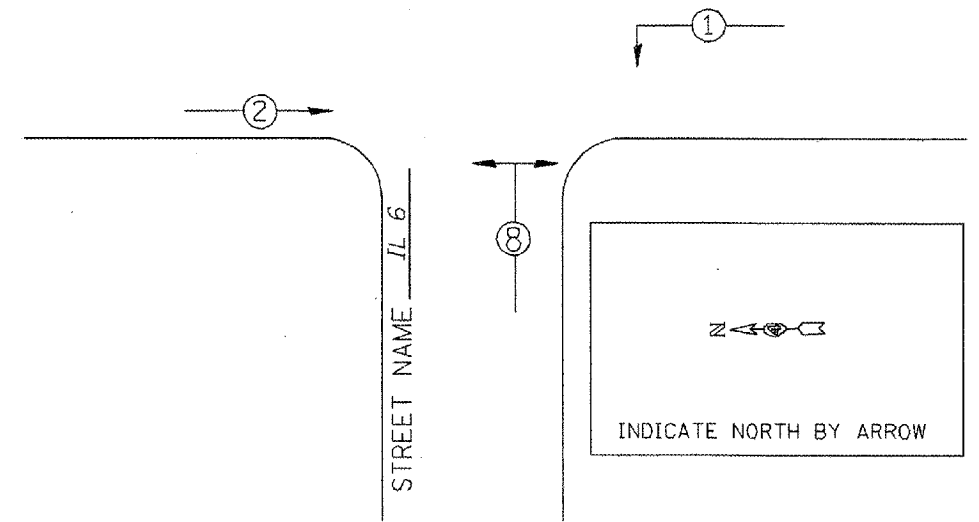
EXISTING CABLE DIAGRAM



EXISTING PHASE DIAGRAM

NAME OF INTERSECTION IL 6 & IL 29
 EXISTING CONTROLLER: FULL ACTUATED CONTROLLER (TS-2), TYPE IV CABINET, TS-1 BACKPANEL

STREET NAME IL 29



LEGEND

← * → VEHICULAR MOVEMENT
 * NUMBER REFERS TO ASSOCIATED PHASE

TRAFFIC SIGNALS LEGEND

- | | | | | | |
|--|------------------------------------|--|------------------------------|--|---------------------------|
| | EX. CONTROLLER (SIGNAL) | | *18 3-PR DETECTOR LOOP CABLE | | EX. DETECTOR LOOP (6'X6') |
| | EX. 3 SEC. SIGNAL HEAD W/BACKPLATE | | 5/C NO. 14 SIGNAL CABLE | | EX. DETECTOR LOOP (QUAD) |
| | EX. 3 SEC. SIGNAL HEAD | | 7/C NO. 14 SIGNAL CABLE | | EX. SERVICE INSTALLATION |

REVISIONS	
NAME	DATE

ILLINOIS DEPARTMENT OF TRANSPORTATION
 EXISTING TRAFFIC SIGNAL
 PHASE AND CABLE DIAGRAMS
 IL 6 & IL 29
 PEORIA COUNTY

SCALE: VERT. DATE
 HORIZ. DATE

DRAWN BY
 CHECKED BY

PLOT DATE = 12/17/2007
 PLOT SCALE = 1/8" = 1'-0"
 USER NAME = bruceb