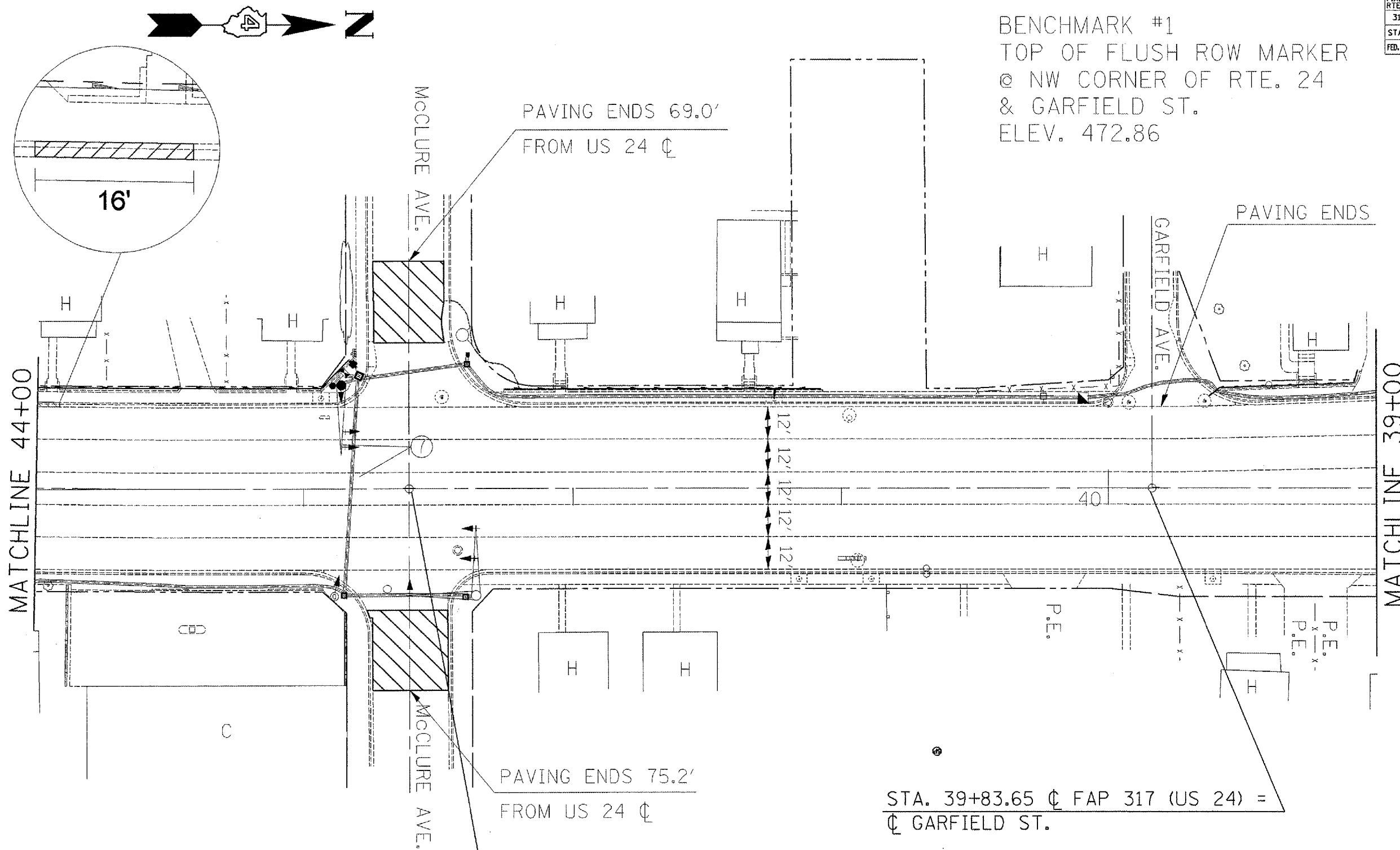


F.A.P. RTE.	SECTION	COUNTY	TOTAL SHEETS	SHEET NO.
317	146-1RS-7	PEORIA	62	26
STA.		TO STA.		
FED. ROAD DIST. NO.		ILLINOIS	FED. AID PROJECT	

BENCHMARK #1
TOP OF FLUSH ROW MARKER
@ NW CORNER OF RTE. 24
& GARFIELD ST.
ELEV. 472.86



MATCHLINE 44+00

MATCHLINE 39+00

REMOVAL LEGEND

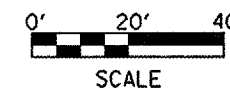
- BUTT JOINT
- CCC&G

PLOT DATE = 5/3/2007
 FILE NAME = o:\projects\146-1RS-7\plans\shwa.dgn
 PLOT SCALE = 1/8"=1'-0"
 USER NAME = arooverp

PAVING ENDS 75.2'
FROM US 24 ϕ

STA. 42+61.10 ϕ FAP 317 (US 24) =
 ϕ McCLURE ST.

STA. 39+83.65 ϕ FAP 317 (US 24) =
 ϕ GARFIELD ST.



REVISIONS	
NAME	DATE

ILLINOIS DEPARTMENT OF TRANSPORTATION
**EXISTING
PLAN SHEETS**
STA 44+00 - 39+00

SCALE: VERT. _____
HORIZ. _____
DATE _____ DRAWN BY _____
CHECKED BY _____