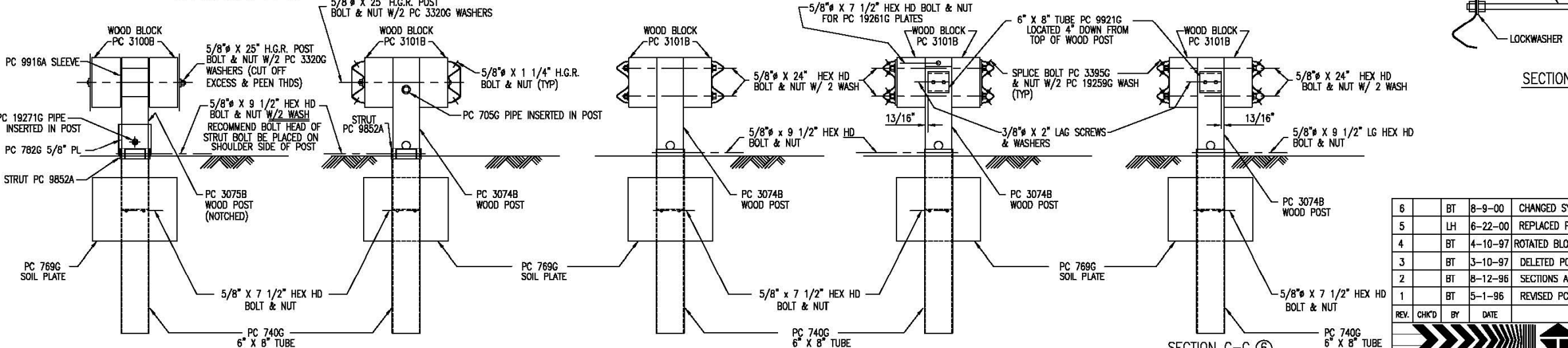
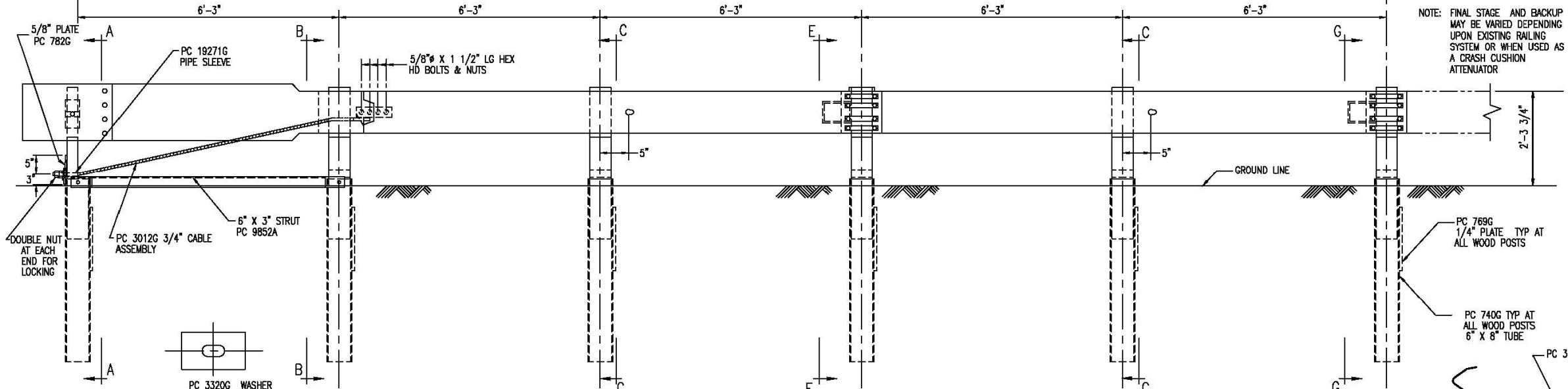


C-A-T BILL OF MATERIAL		
PRODUCT CODE	QTY	DESCRIPTION
31G	2	12/12/6/0 (GUARDRAIL)
130A	2	10/12/8/5/10/8/8/SP CAT (GUARDRAIL)
705G	1	2" x 5 1/2" PIPE
740G	6	4" TUBE SLEEVE
769G	6	1/4 x 18 x 24 SOIL PLATE
782G	1	5/8" x 8" x 8" BEARING PLATE
983G	1	10/NOSE PLATE/CAT/ROLLED
984G	2	10/SIDE PLATE CAT
3012G	1	CABLE 3/4 x 8'0/DBL SWG
3074B	5	WD 3'6 POST #2, 3, 4, 5, 6 CAT
3075B	1	WD 3'6 POST #1 CAT
3100B	2	WD BLOCK 1'2 #1 CAT
3101B	10	WD BLOCK 1'2 #2-6 CAT
3255G	4	3/8" FLAT WASHER
3263G	4	3/8" x 2" LAG SCREW
3275G	2	3/8" x 24 1/2" RESTRAINT ROD
3300G	20	5/8" FLAT WASHER
3320G	4	3/16" x 1 3/4" x 3" RECT WASHER
3340G	85	5/8" G.R. NUT
3360G	18	5/8" x 1 1/4" G.R. BOLT
3380G	8	5/8" x 1 1/2" HEX BOLT
3395G	32	5/8" x 1 3/4" HEX BOLT CAT
3478G	13	5/8" x 7 1/2" HEX BOLT
3497G	6	5/8" x 9 1/2" HEX BOLT
3650G	2	5/8" x 25" G.R. BOLT
3900G	2	1" FLAT WASHER
3910G	4	1" HEX NUT
4252G	8	3/8" HEX NUT
4258G	4	3/8" LOCK WASHER
4640G	8	5/8" x 24" HEX BOLT
9852A	1	CHANNEL STRUT x 6'-6"
9915A	1	SPACER CHANNEL CAT
9916A	1	10/BENT PLATE SLEEVE
9921G	2	6" SLEEVE 6 x 8
19259G	32	3/16" x 2" x 10" PLATE WASHER
19261G	2	1/2 x 3 x 7 POST PLATE
19271G	1	1" x 2 1/2" PIPE SLEEVE CAT



REV.	CHK'D	BY	DATE	REMARKS
6	BT	8-9-00		CHANGED SYSTEM HEIGHT, WAS 2'-3"
5	LH	6-22-00		REPLACED PC 766 WITH PC 769, CHANGED TITLE BLOCK
4	BT	4-10-97		ROTATED BLOCK PC 9921 90° AT POST 4 & 6
3	BT	3-10-97		DELETED PC 3072, 3073, 4470, CHG QTY 3074 & 3478
2	BT	8-12-96		SECTIONS A-A & B-B, CORRECTED PIPE SLEEVE PC No
1	BT	5-1-96		REVISED PC No 31G & 130A

DRAWN	BT
CHECKED	EN
SCALE	N.T.S.
DATE	7-15-94
ENG. FILE #	SS245-01E
SHT.No.	E1 OF 1
DRAWING NO.	SS-245
REV.	6