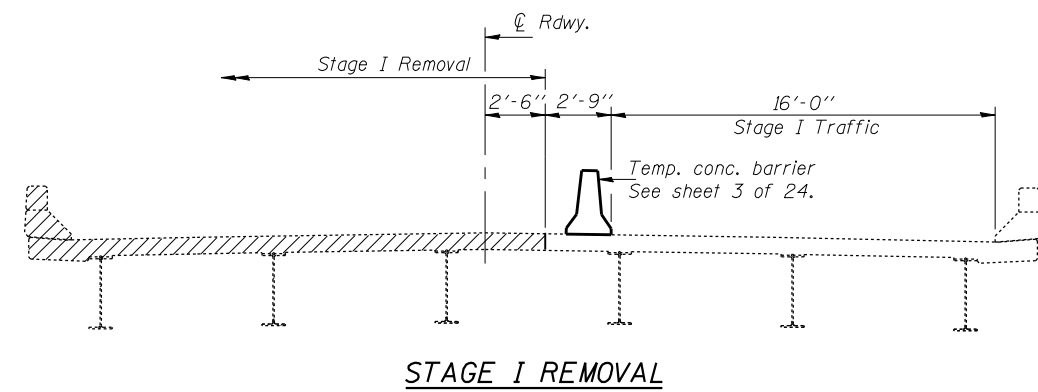


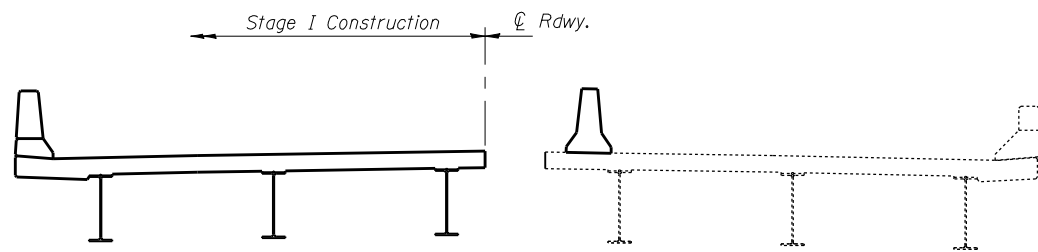
STATE OF ILLINOIS
DEPARTMENT OF TRANSPORTATION

ROUTE NO.	SECTION	COUNTY	TOTAL SHEETS	SHEET NO.	SHEET NO. 2 24 SHEETS
FAI 74	(57-22) BR-3	McLEAN	42	13	
FED. ROAD DIST. NO. 7	ILLINOIS	FED. AID PROJECT			

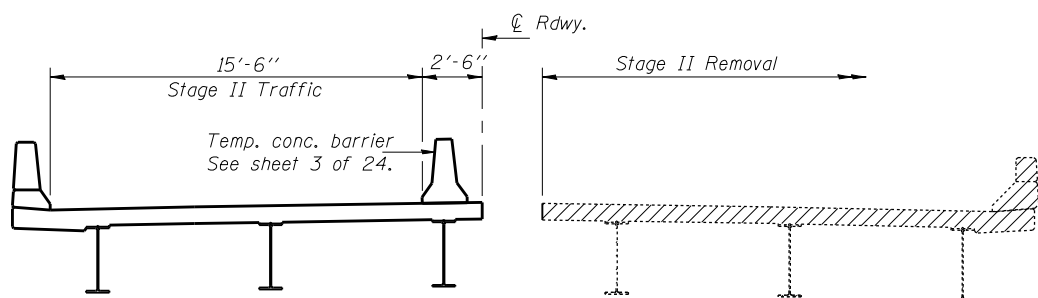
Contract #70672



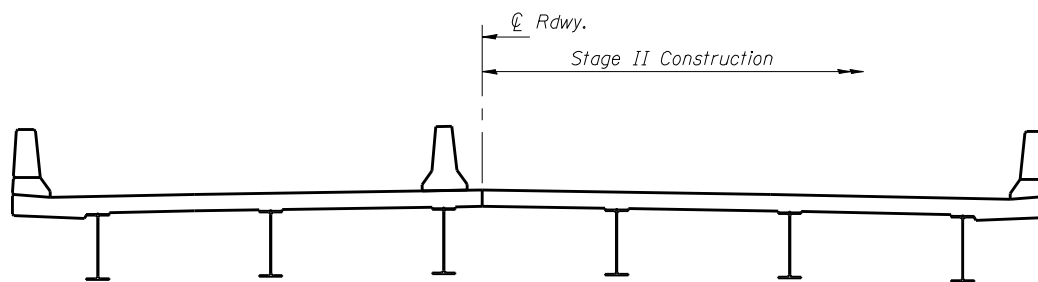
STAGE I REMOVAL



STAGE I CONSTRUCTION



STAGE II REMOVAL

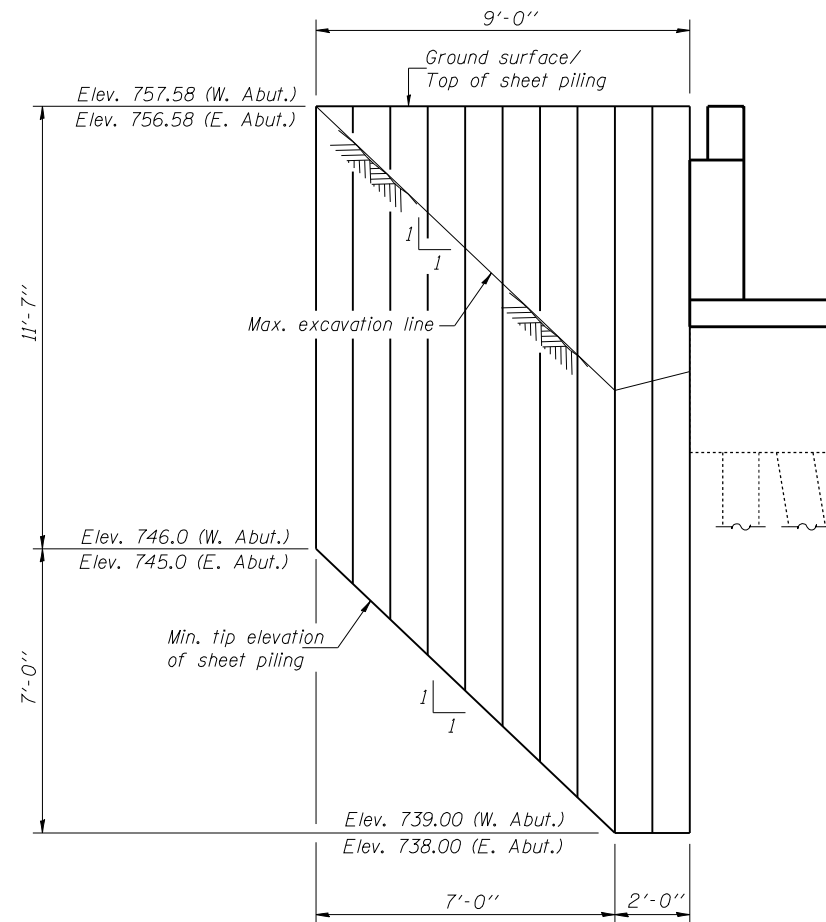


STAGE II CONSTRUCTION

Notes: Hatched areas indicate Removal of Existing Superstructures.
For quantity of temporary concrete barrier, see Roadway Plans.
All cross sections are looking East.
Stage construction shown is for the superstructure, abutments and Pier 1. Stage construction is different for Pier 2. See sheet 23 of 24.

DESIGNED	DPN
CHECKED	SMR
DRAWN	h.t. duong
CHECKED	DPN/SMR

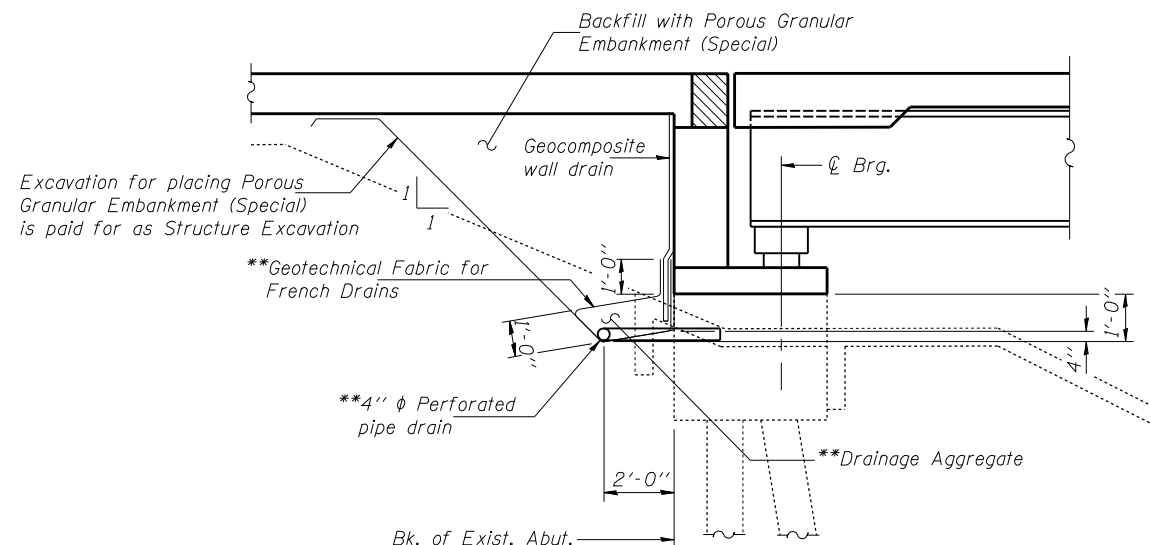
Jan. 31, 2008
EXAMINED *Thomas J. Domagalick*
ENGINEER OF BRIDGE DESIGN
PASSED *Ralph E. Anderson*
ENGINEER OF BRIDGES AND STRUCTURES



TEMPORARY SHEET PILING AT ABUTMENTS

Min. section modulus = 30.2 in³/ft.

Note: If the Contractor chooses to alter the temporary cantilevered sheet piling design requirements shown on the plans, a design submittal including plan details and calculations will be required for review and acceptance by the Engineer.



SECTION THRU ABUTMENT

**Included in the cost of Pipe Underdrains for Structures, 4''.

TOTAL BILL OF MATERIAL

ITEM	UNIT	SUPER	SUB	TOTAL
Porous Granular Embankment (Special)	Cu. Yd.		82.4	82.4
Removal of Existing Superstructures	Each	1		1
Concrete Removal	Cu. Yd.		19.9	19.9
Structure Excavation	Cu. Yd.		82.4	82.4
Floor Drains	Each	12		12
Concrete Structures	Cu. Yd.		43.0	43.0
Concrete Superstructure	Cu. Yd.	261.8		261.8
* Bridge Deck Grooving	Sq. Yd.	1058		1058
* Protective Coat	Sq. Yd.	1287		1287
Furnishing & Erecting Structural Steel	L. Sum	1		1
Stud Shear Connectors	Each	3492		3492
Reinforcement Bars, Epoxy Coated	Pound	59360	4000	63360
Bar Splicers	Each	633	36	669
Temporary Sheet Piling	Sq. Ft.	286		286
Name Plates	Each	1		1
Elastomeric Bearing Assembly, Type I	Each	12		12
Elastomeric Bearing Assembly, Type II	Each	6		6
Anchor Bolt 1" φ	Each	24		24
Anchor Bolt 1/2" φ	Each	24		24
* Diamond Grinding (Bridge Section)	Sq. Yd.	1050		1050
Geocomposite Wall Drain	Sq. Yd.		47.0	47.0
Pipe Underdrains for Structures, 4"	Foot		100.0	100.0
Drainage Scupper, DS-12	Each	2		2
Concrete Sealer	Sq. Ft.		806.0	806.0
Preformed Joint Strip Seal	Foot	84.0		84.0
Structural Repair of Concrete (Depth ≤ 5')	Sq. Ft.		56.0	56.0

*Includes bridge approach pavements.

Notes: Drainage system components shall extend as shown to discharge onto slopewall. Provide rodent shield in the outlet pipe as shown on Highway Standard 601101. Core hole through existing wingwall for 4" φ pipe underdrains, 4 locations. Cost included with Pipe Underdrains for Structures, 4''.

**GENERAL DATA &
STAGE CONSTRUCTION DETAILS**
F.A.I. RT. 74 - SEC. (57-22)BR-3
McLEAN COUNTY
STATION 1039+00
STRUCTURE NO. 057-0125 (E.B.)