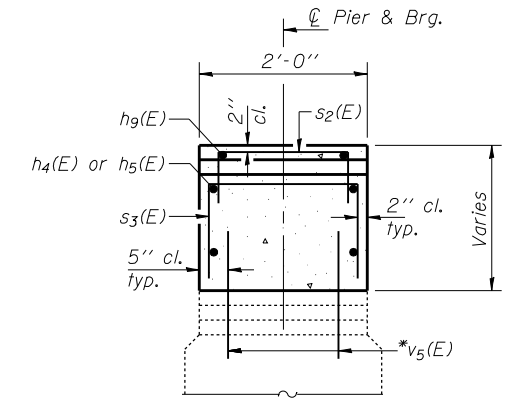
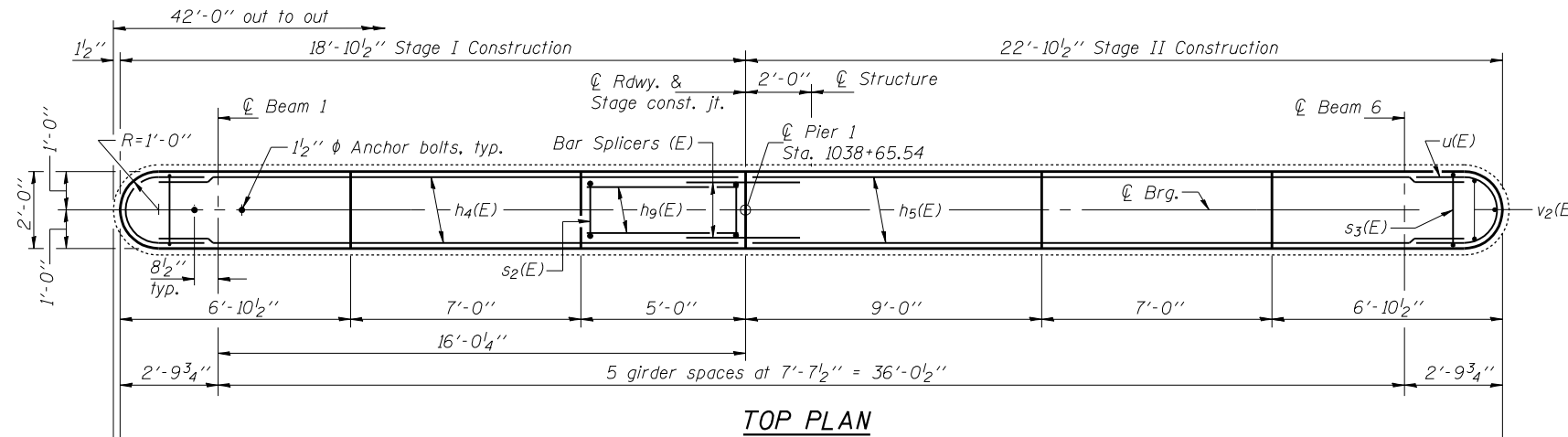


STATE OF ILLINOIS
DEPARTMENT OF TRANSPORTATION

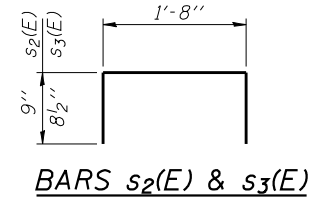
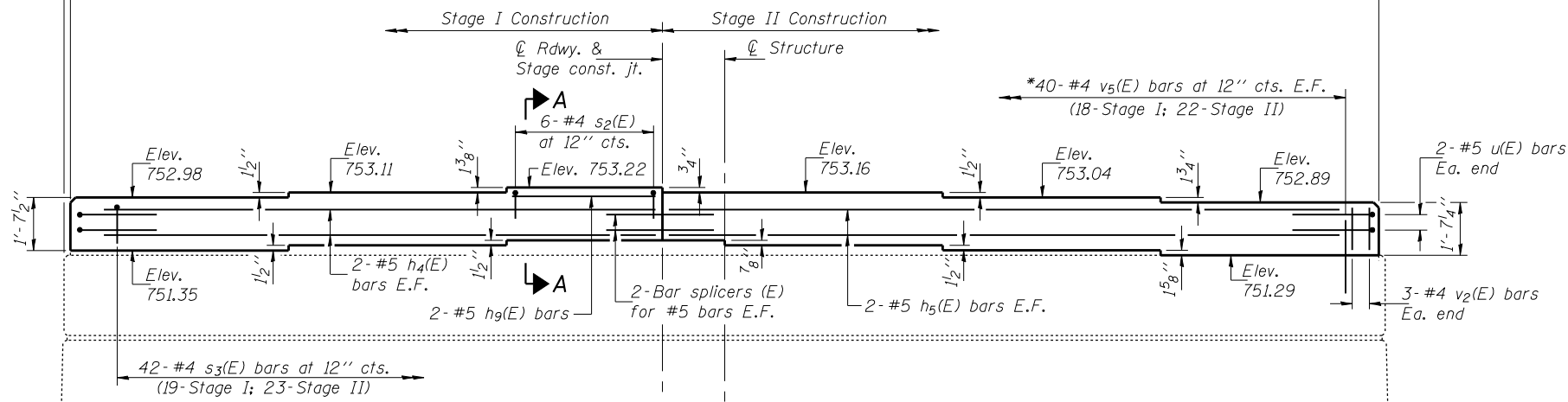
ROUTE NO.	SECTION	COUNTY	SHEETS	SHEET NO.	SHEET NO. 22 24 SHEETS
FAI 74	(57-22) BR-3	McLEAN	42	33	
FED. ROAD DIST. NO. 7	ILLINOIS	FED. AID PROJECT-			

Contract #70672

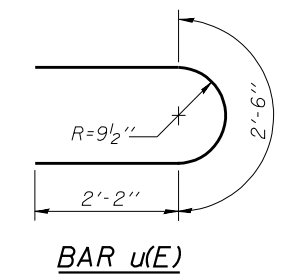
Notes: Space reinforcement in cap to miss anchor bolts.
See sheet 24 of 24 for bar splicer details.



SECTION A-A

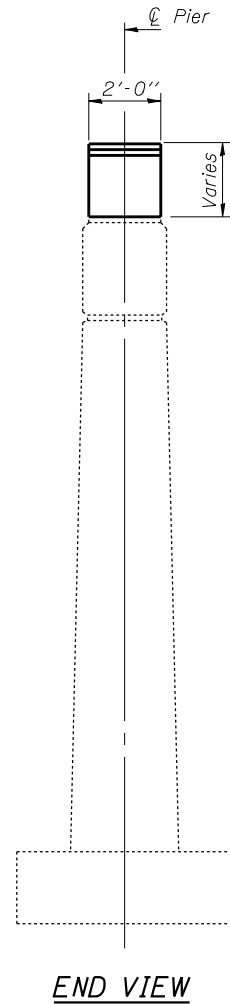


BARS s₂(E) & s₃(E)



BILL OF MATERIAL

Bar	No.	Size	Length	Shape
h ₄ (E)	4	#5	17'-11"	—
h ₅ (E)	4	#5	21'-11"	—
h ₉ (E)	2	#5	4'-8"	—
s ₂ (E)	6	#4	3'-2"	U
s ₃ (E)	42	#4	3'-1"	U
u(E)	4	#5	6'-10"	C
v ₂ (E)	6	#4	1'-3"	—
v ₅ (E)	80	#4	1'-10"	—
Concrete Structures		Cu. Yd.	5.0	
Reinforcement Bars, Epoxy Coated		Pound	410	



MIN. BAR LAP
#5 bars = 2'-2"

*Epoxy grout #4 v₅(E) bars in 9" min. drilled holes according to Section 584 of the Std. Spec's.

DESIGNED	DPN
CHECKED	SMR
DRAWN	h.t. duong
CHECKED	DPN/SMR

Jan. 31, 2008
EXAMINED *Thomas J. Domagalick*
ENGINEER OF BRIDGE DESIGN
PASSED *Ralph E. Anderson*
ENGINEER OF BRIDGES AND STRUCTURES

PIER 1
F.A.I. RT. 74 - SEC. (57-22)BR-3
McLEAN COUNTY
STATION 1039+00
STRUCTURE NO. 057-0125 (E.B.)