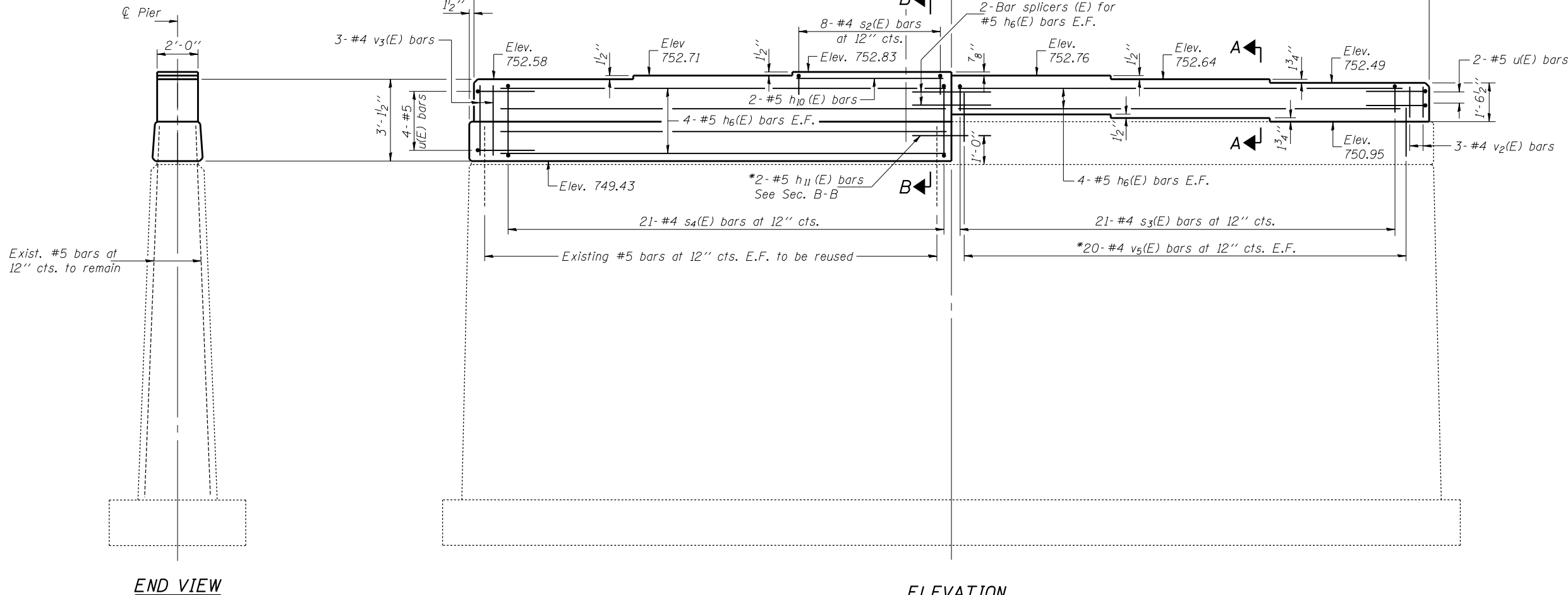
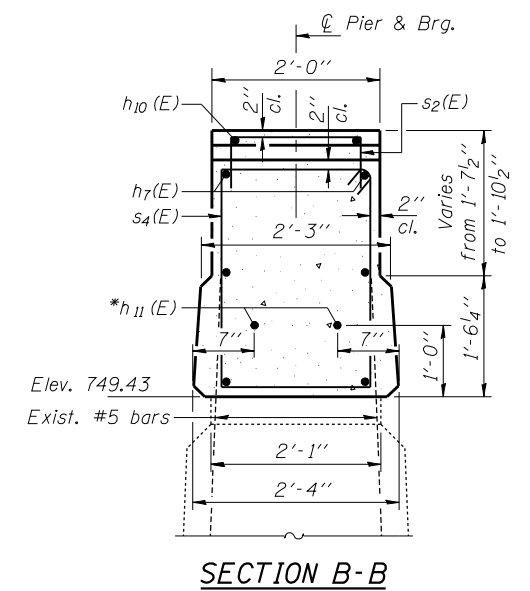
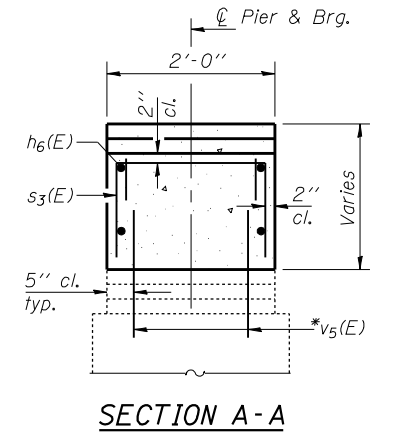
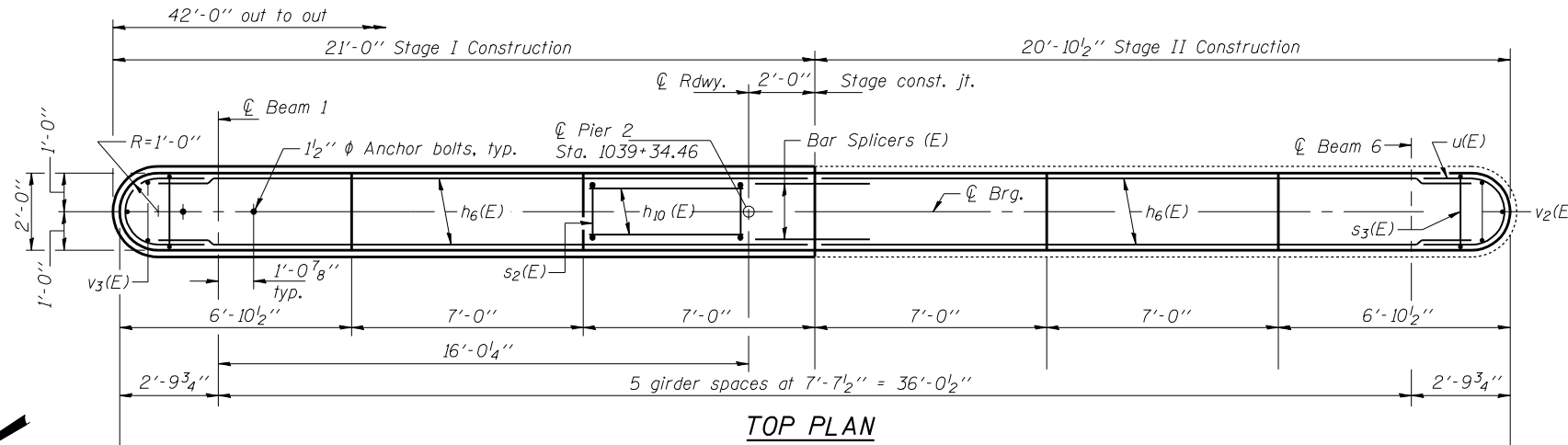
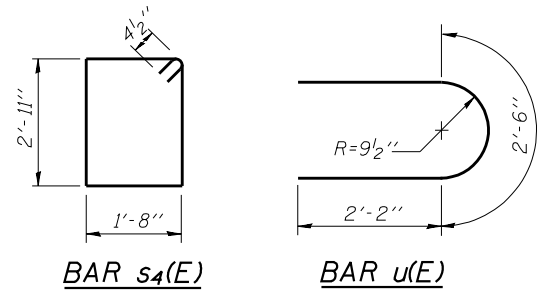


STATE OF ILLINOIS  
DEPARTMENT OF TRANSPORTATION

ROUTE NO.	SECTION	COUNTY	TOTAL SHEETS	SHEET NO.	SHEET NO. 23
FAI 74	(57-22) BR-3	MCLEAN	42	34	24 SHEETS
FED. ROAD DIST. NO. 7	ILLINOIS	FED. AID PROJECT			

Contract #70672

Notes: Existing reinforcement bars extending into areas of new construction shall be cleaned, straightened, and incorporated into the new construction. Space reinforcement in cap to miss anchor bolts. See sheet 24 of 24 for bar splicer details.



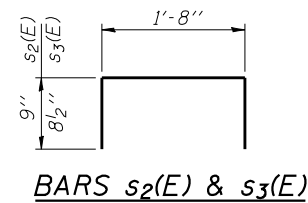
BILL OF MATERIAL

Bar	No.	Size	Length	Shape	
h6(E)	12	#5	19'-11"	—	
h10(E)	2	#5	6'-8"	—	
h11(E)	2	#5	2'-9"	—	
s2(E)	8	#4	3'-2"	U	
s3(E)	21	#4	3'-1"	U	
s4(E)	21	#4	9'-11"	U	
u(E)	6	#5	6'-10"	U	
v2(E)	3	#4	1'-3"	—	
v3(E)	3	#4	2'-11"	—	
v5(E)	40	#4	1'-10"	—	
Concrete Structures				Cu. Yd.	7.9
Reinforcement Bars, Epoxy Coated				Pound	570

PIER 2  
F.A.I. RT. 74 - SEC. (57-22)BR-3  
MCLEAN COUNTY  
STATION 1039+00  
STRUCTURE NO. 057-0125 (E.B.)

DESIGNED	DPN
CHECKED	SMR
DRAWN	h.t. duong
CHECKED	DPN/SMR

Jan. 31, 2008  
EXAMINED *Thomas J. Domagala*  
ENGINEER OF BRIDGE DESIGN  
PASSED *Ralph E. Anderson*  
ENGINEER OF BRIDGES AND STRUCTURES



ELEVATION  
(Looking East)

MIN. BAR LAP  
#5 bars = 2'-2"

\*Epoxy grout #4 v5(E) & #5 h11(E) bars in 9' min. drilled holes according to Section 584 of the Std. Spec's.