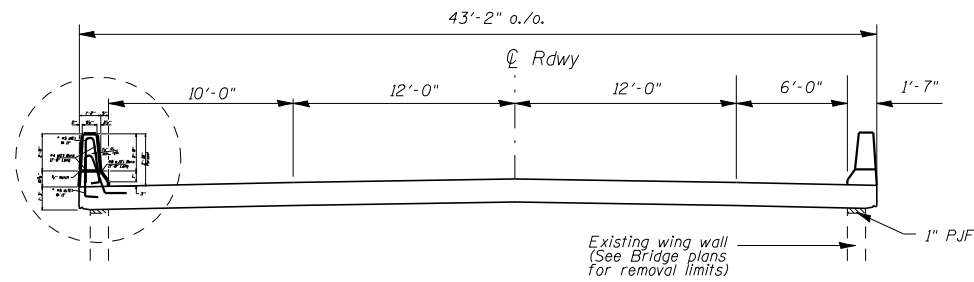


BRIDGE APPROACH PAVEMENT (SPECIAL)



Bridge Approach Pavement near Abutment

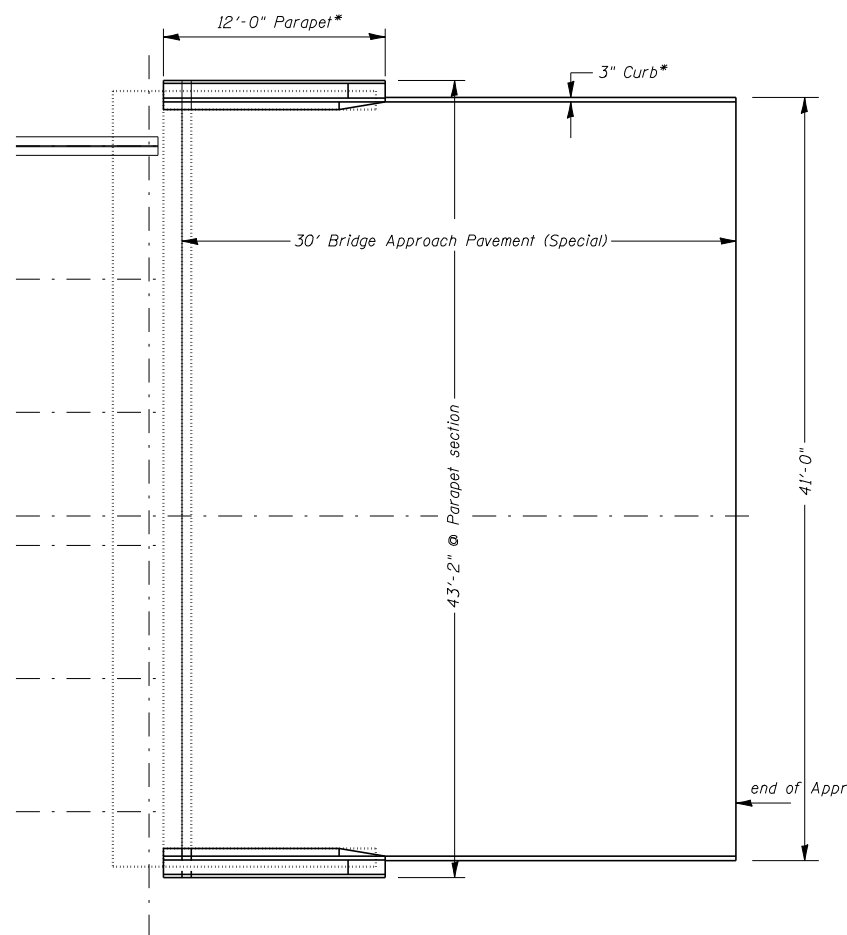
Looking Upstation

*Note: Cost of Constructing Parapet included in Bridge Approach Pavement (Special) Pay Item

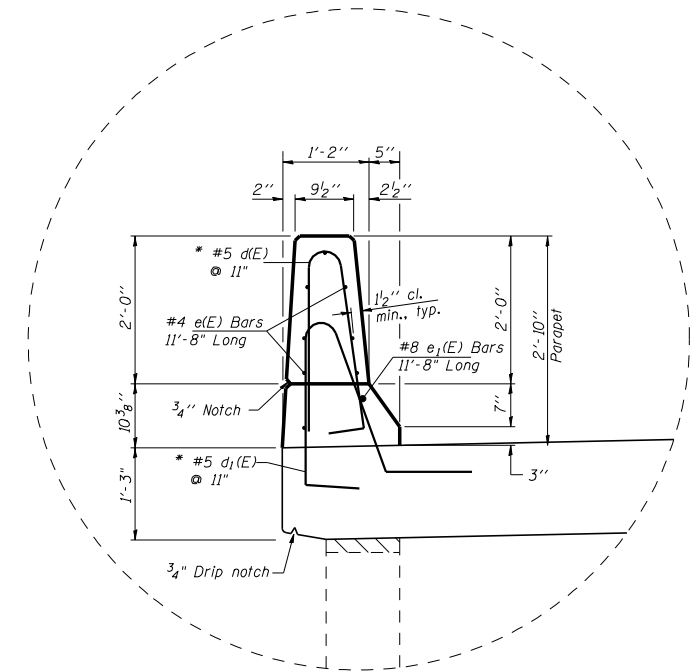
*Note: Please Reference District Special Provision for BRIDGE APPROACH PAVEMENT (SPECIAL)

*Note: NO Bridge Approach Pavement Curb to be constructed on the WEST or APPROACH END

*Note: Bridge Approach Pavement Drains to be constructed on the EAST or DEPARTURE END



Bridge Approach Pavement Plan



Parapet Detail
See Bridge Plans for More Information

FILE NAME = c:\projects\d505207 (v8)\70672_text.dgn	USER NAME = collierbw	DESIGNED -	REVISED -	STATE OF ILLINOIS DEPARTMENT OF TRANSPORTATION	I-74 OVER KICKAPOO CREEK - APPROACH PAVEMENT DETAIL			F.A.I RTE. 74	SECTION (57-22)BR-3	COUNTY MCLEAN	TOTAL SHEETS 42	SHEET NO. 38
	PLOT SCALE = 41.5800' / IN.	DRAWN -	REVISED -		SCALE: SHEET NO. OF SHEETS STA. TO STA.			CONTRACT NO. 70672				
	PLOT DATE = 12/21/2007	CHECKED -	REVISED -		FED. ROAD DIST. NO. ILLINOIS FED. AID PROJECT							
		DATE -	REVISED -									