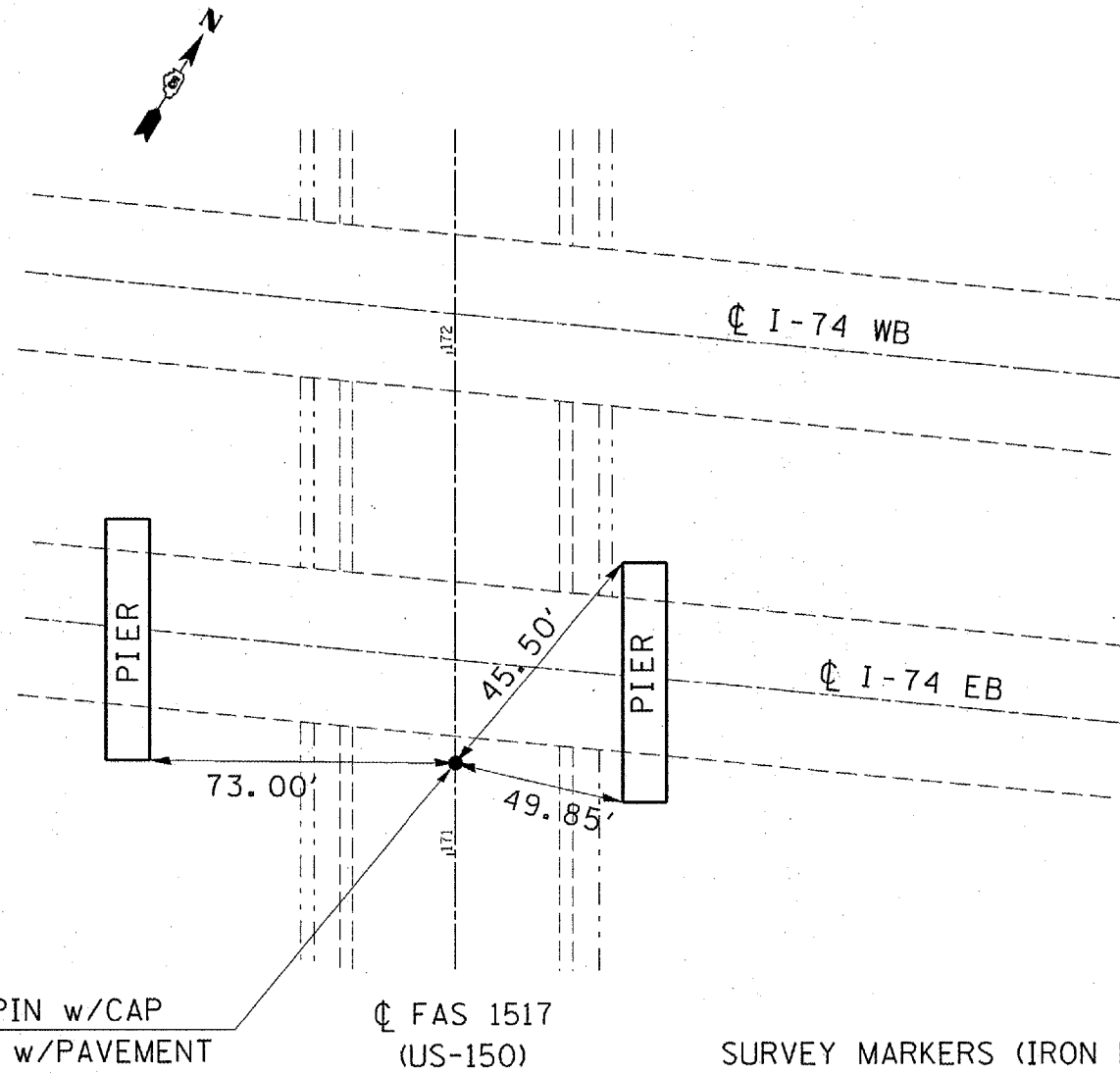


F.A.S. RTE.	SECTION	COUNTY	TOTAL SHEETS	SHEET NO.
1517	08PPP	DEWITT	11	7

CENTERLINE ALIGNMENT TIES

POT #1
STATION 171+03.831



IRON PIN w/CAP
FLUSH w/PAVEMENT

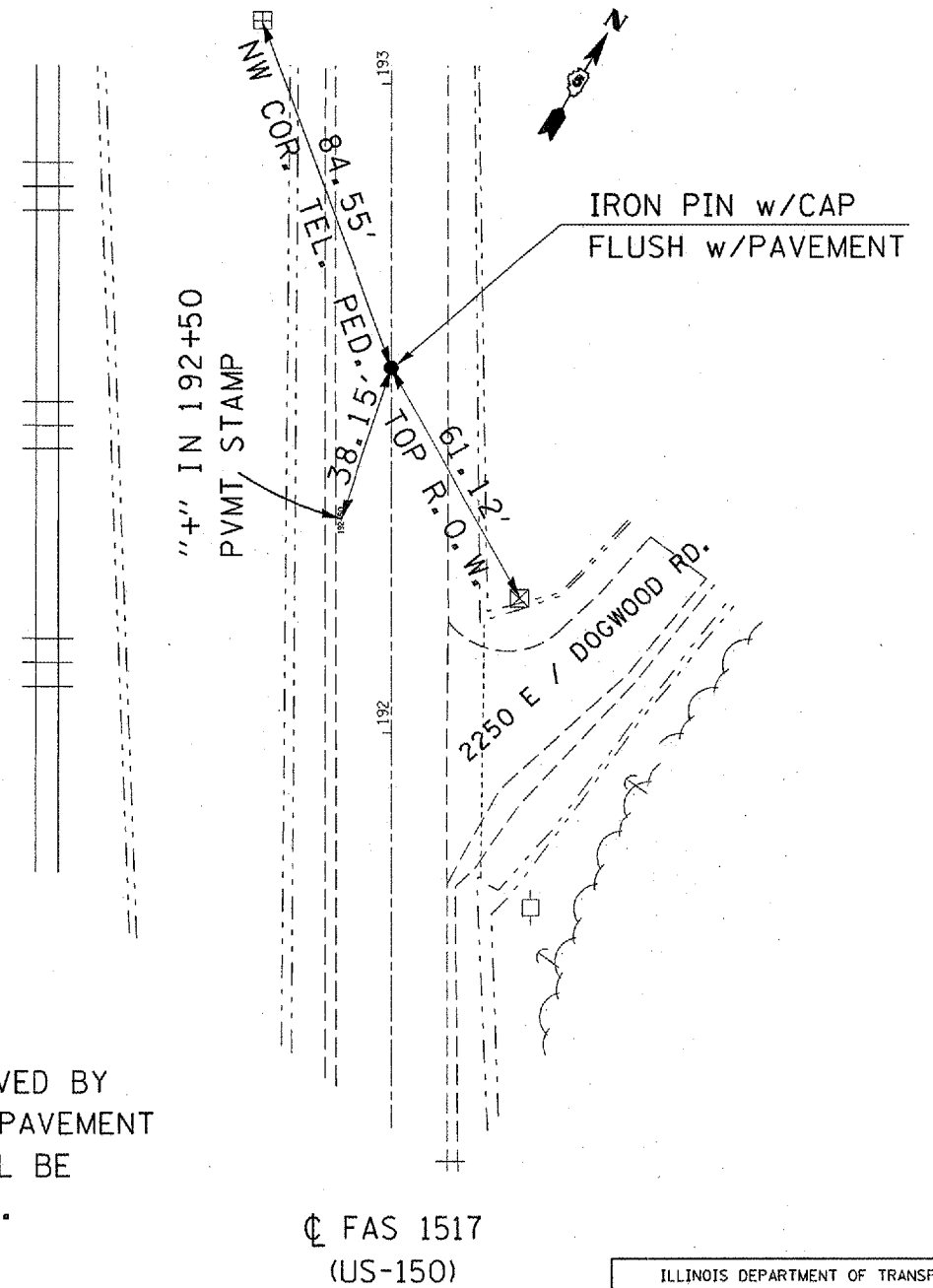
☉ FAS 1517
(US-150)

SURVEY MARKERS (IRON PIN AND CAP) SHALL BE PRESERVED BY COVERING THEM WITH A 2"x2" SQUARE OF SHORT TERM PAVEMENT MARKING TAPE PRIOR TO MICRO-SURFACING. COST SHALL BE INCLUDED WITH OTHER VARIOUS ITEMS IN THE CONTRACT.

SEE SURVEY BOOK 4744 PG. 5-3 NOT TO SCALE

CENTERLINE ALIGNMENT TIES

POT #2
STATION 192+84.80



"4" IN 192+50
PVMT STAMP

IRON PIN w/CAP
FLUSH w/PAVEMENT

☉ FAS 1517
(US-150)

SEE SURVEY BOOK 4744 PG. 5-3 NOT TO SCALE

PLOT DATE : 10/17/2007
FILE NAME : c:\projects\1517\1517\1517.dwg
PLOT SCALE : 42.3295' / IN.
USER NAME : callie-b

ILLINOIS DEPARTMENT OF TRANSPORTATION
**SURVEY MARKERS
 TO BE PRESERVED**
 F.A.S. 1517 (U.S. 150)
 SECTION 08PPP
 CHAMPAIGN COUNTY
 SCALE: N/A
 DATE: 08/28/07
 DRAWN BY: RC
 CHECKED BY: MAL