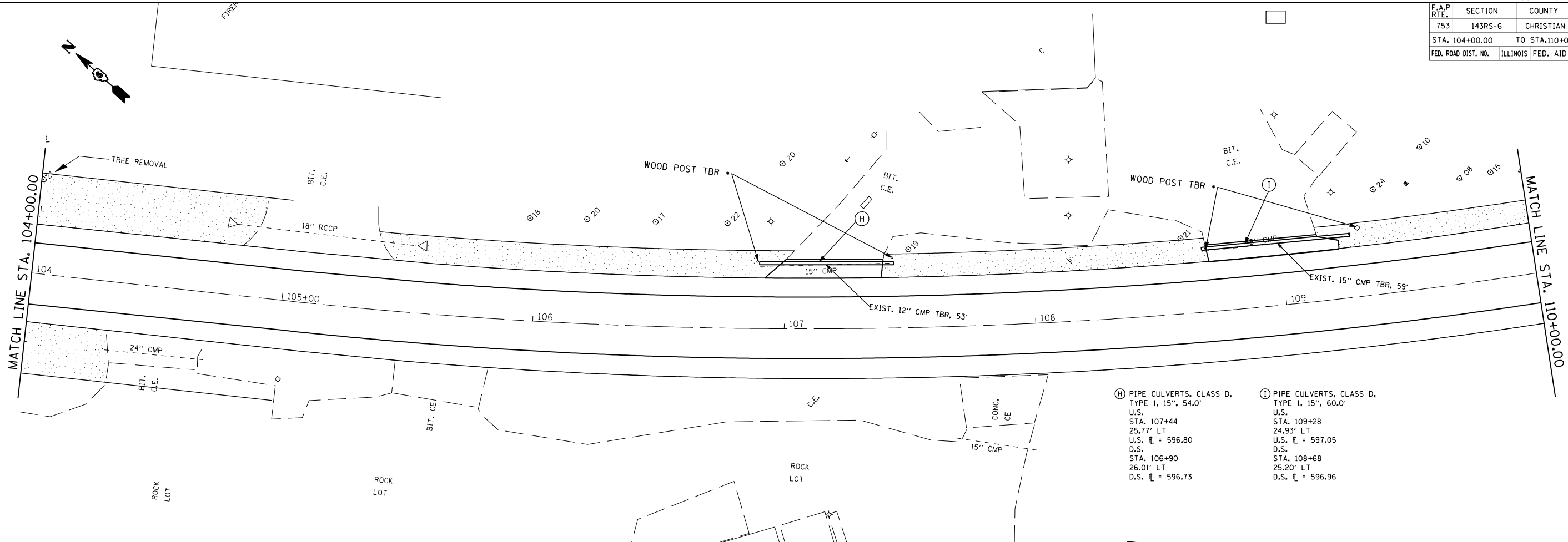


F.A.P. RTE.	SECTION	COUNTY	TOTAL SHEETS	SHEET NO.
753	143RS-6	CHRISTIAN	127	24
STA. 104+00.00		TO STA. 110+00.00		
FED. ROAD DIST. NO.		ILLINOIS	FED. AID PROJECT	

PLAN	SURVEYED	BY	DATE
NO. _____	PLOTTED _____	_____	_____
NOTE BOOK NO. _____	CHECKED BY _____	_____	_____
_____	DATE CHECKED _____	_____	_____
_____	NO. OF WAY CHECKED _____	_____	_____
_____	CADD FILE NAME _____	_____	_____



- (H) PIPE CULVERTS, CLASS D, TYPE 1, 15", 54.0' U.S. STA. 107+44 25.77' LT U.S. \bar{x} = 596.80 D.S. STA. 106+90 26.01' LT D.S. \bar{x} = 596.73
- (I) PIPE CULVERTS, CLASS D, TYPE 1, 15", 60.0' U.S. STA. 109+28 24.93' LT U.S. \bar{x} = 597.05 D.S. STA. 108+68 25.20' LT D.S. \bar{x} = 596.96

PROFILE	SURVEYED	BY	DATE
NO. _____	PLOTTED _____	_____	_____
NOTE BOOK NO. _____	CHECKED BY _____	_____	_____
_____	DATE CHECKED _____	_____	_____
_____	NO. OF WAY CHECKED _____	_____	_____
_____	STRUCTURE NOTATIONS CHKD _____	_____	_____

PLOT DATE = Dec-12-2007 10:35:36AM
 FILE NAME = c:\projects\72624\143rs\143rs\143rs.dgn
 PLOT SCALE = 42.3529' / IN.
 USER NAME = laughlin-1

