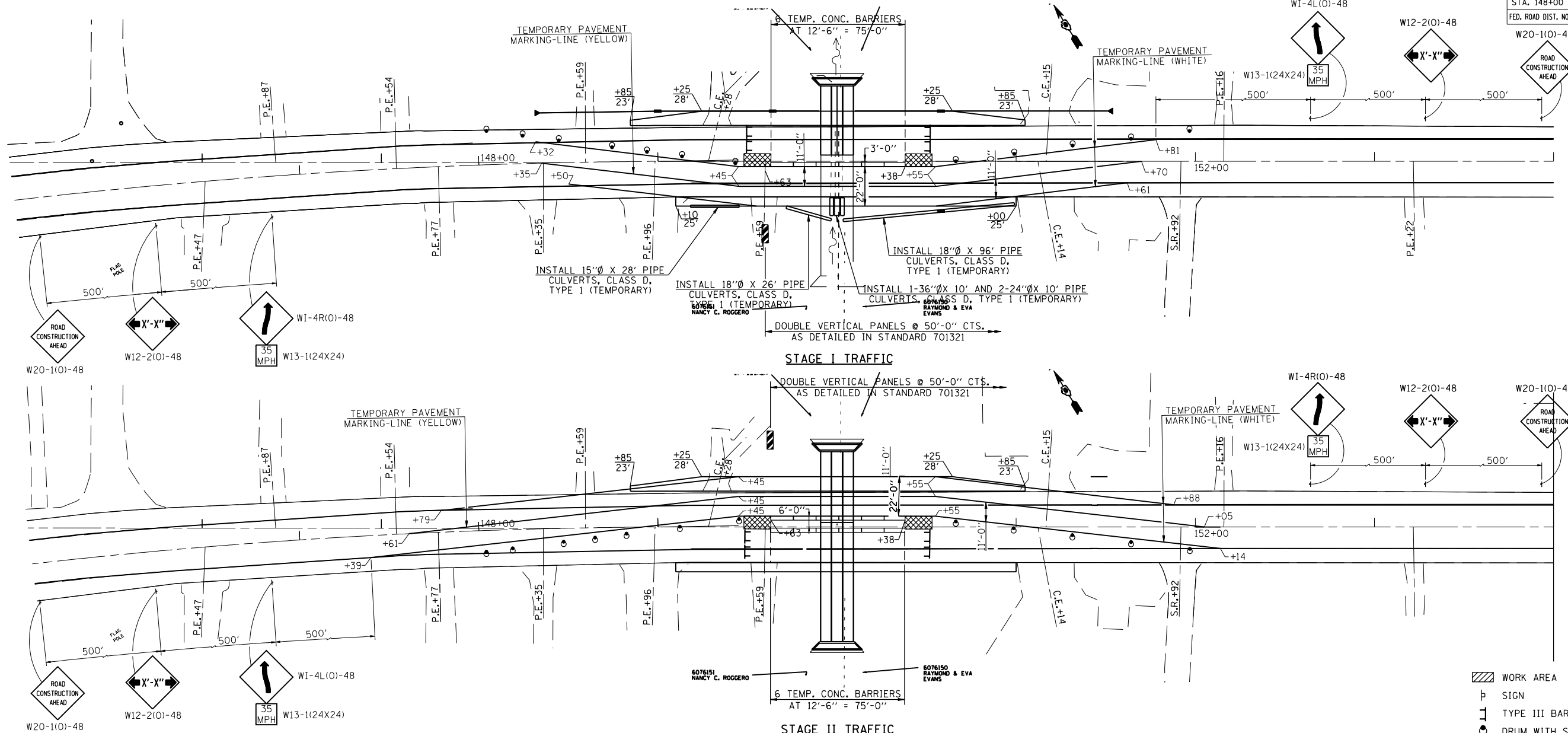


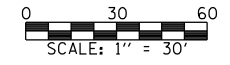
F.A.P. RTE.	SECTION	COUNTY	TOTAL SHEETS	SHEET NO.
753	143RS-6	CHRISTIAN	127	80
STA. 148+00 TO STA. 151+50				
FED. ROAD DIST. NO.	ILLINOIS	FED. AID PROJECT	SHEET 10 OF 26	



**SUGGESTED STAGE CONSTRUCTION SEQUENCE**

- STAGE I**
1. THE CONTRACTOR SHALL PLACE MAX. WIDTH SIGNS AND ROAD CLOSED AHEAD SIGNS AS SHOWN ON SHEET 12, BEFORE IMPLEMENTING ANY STAGE TRAFFIC CONTROL. THESE SIGNS SHALL BE INCLUDED IN THE COST OF "TRAFFIC CONTROL COMPLETE".
  2. INSTALL PIPE CULVERTS (TEMPORARY) AS SHOWN ON PLAN RT.
  3. CONSTRUCT HOT-MIX ASPHALT BASE COURSE WIDENING 8" RT. STA. 149+10 TO STA. 151+00 - (5'-0" WIDE).
  4. ERECT TRAFFIC CONTROL FOR STAGE I.
  5. REMOVE EXISTING STRUCTURE LEFT. @ STA. 150+00.
  6. CONSTRUCT PROPOSED STAGE I TRIPLE BARREL 5'-0" X 3'-0" CULVERT AND WINGWALLS STA. 150+00.
  7. CONSTRUCT PROPOSED PORTLAND CEMENT CONCRETE PAVEMENT 8" LT. STA. 149+80 TO STA. 150+20.
  8. CONSTRUCT STORM SEWERS, CLASS A TYPE 1 AND INLETS TYPE B SPECIAL AT LOCATIONS AS SHOWN ON THE PLANS AND REMOVE EXISTING CULVERTS LT.
  9. INSTALL ENGINEER APPROVED STEEL PLATE LID ON ALL THREE INLETS LT. COST INCLUDED IN INLETS TYPE B, SPECIAL.
  10. CONSTRUCT HOT-MIX ASPHALT BASE COURSE WIDENING 8" LT. STA. 148+85 TO STA. 151+05.
- STAGE II**
1. ERECT TRAFFIC CONTROL FOR STAGE II.
  2. REMOVE EXISTING STRUCTURE RIGHT @ STA. 150+00 AND BASE COURSE WIDENING STA. 149+10 TO STA. 151+00 RT..
  3. CONSTRUCT PROPOSED STAGE II TRIPLE BARREL 5'-0" X 3'-0" CULVERT AND WINGWALLS @ STA. 150+00.
  4. CONSTRUCT PROPOSED PORTLAND CEMENT CONCRETE PAVEMENT 8" RT. STA. 149+80 TO STA. 150+20.
  5. CONSTRUCT STORM SEWERS, CLASS A TYPE 1 AND INLETS TYPE B SPECIAL AT LOCATIONS AS SHOWN ON THE PLANS AND REMOVE EXISTING CULVERTS RT.
  6. CONSTRUCT PROPOSED HOT-MIX ASPHALT SHOULDERS RT. STA. 149+80 TO STA. 150+20.

- FINAL**
1. REMOVE HOT MIX ASPHALT BASE COURSE WIDENING STA. 148+85 TO STA. 151+05 LT. AND SHAPE SLOPES.
  2. INSTALL SHORT-TERM PAVEMENT MARKINGS AND REMOVE ALL STAGE TRAFFIC CONTROL AND RE-ESTABLISH NORMAL TRAFFIC PATTERNS.
  3. REMOVE SHORT TERM PAVEMENT MARKINGS AND COMPLETE LEVELING BINDER AND HOT-MIX SURFACE COURSE PLACEMENT UNDER TRAFFIC WITH FLAGGERS ON A LATER DATE.
  4. FINAL STRIPING, SEEDING AND MISCELLANEOUS CLEANUP.



**GENERAL NOTES**

1. THE CONTRACTOR SHALL NOTIFY THE DISTRICT 6 TRAFFIC SECTION OF THE BUREAU OF OPERATIONS (PH. 785-5836) AT LEAST ONE WEEK PRIOR TO IMPLEMENTING STAGE TRAFFIC CONTROL.
2. EXISTING PAVEMENT MARKINGS THAT CONFLICT WITH THE REVISED STAGE TRAFFIC PATTERNS DURING ALL PHASES OF STAGE CONSTRUCTION SHALL BE REMOVED AS SPECIFIC IN SECTION 783 OF THE STANDARD SPECIFICATIONS AND PAID FOR AS "PAVEMENT MARKING REMOVAL".
3. THE CONTRACTOR SHALL MAINTAIN FULL OPERATIONAL STATUS OF ALL SIDEROADS AND ACCESS TO ALL PRIVATE AND COMMERCIAL PROPERTIES DURING ALL PHASES OF CONSTRUCTION.
4. TEMPORARY CONCRETE BARRIER, THE BARRIER UNIT AT EACH END OF THE INSTALLATION SHALL BE SECURED TO THE PAVEMENT OR SHOULDER USING ALL SIX ANCHORING PINS FOR F SHAPE OR ALL SIX DOWEL BARS FOR NEW JERSEY SHAPE.
5. SIGNING FOR STAGE II SAME AS STAGE I EXCEPT FOR W1-4(0)48 SIGNS THAT SHALL BE REVERSED TO ACCOMMODATE LANE SHIFT.

- SYMBOLS**
- WORK AREA
  - SIGN
  - TYPE III BARRICADE
  - DRUM WITH STEADY BURNING LIGHT
  - TRAFFIC SIGNAL
  - TEMPORARY RUMBLE STRIP
  - INDUCTION LOOP DETECTOR
  - DOUBLE VERTICAL PANEL
  - TYPE C BIDIRECTIONAL REFLECTOR
  - TEMPORARY CONCRETE BARRIER
  - IMPACT ATTENUATOR
  - STEADY BURNING LIGHTS AND DOUBLE VERTICAL PANELS

**STAGE CONSTRUCTION TRAFFIC DETAILS**  
**IL. ROUTE 104 OVER TRIBUTARY**  
**TO SOUTH FORK SANGAMON RIVER**  
**F.A.P. ROUTE 753 - SECTION 143RS-6**  
**CHRISTIAN COUNTY**  
**STA. 150+00**  
**S.N. 011-7056**