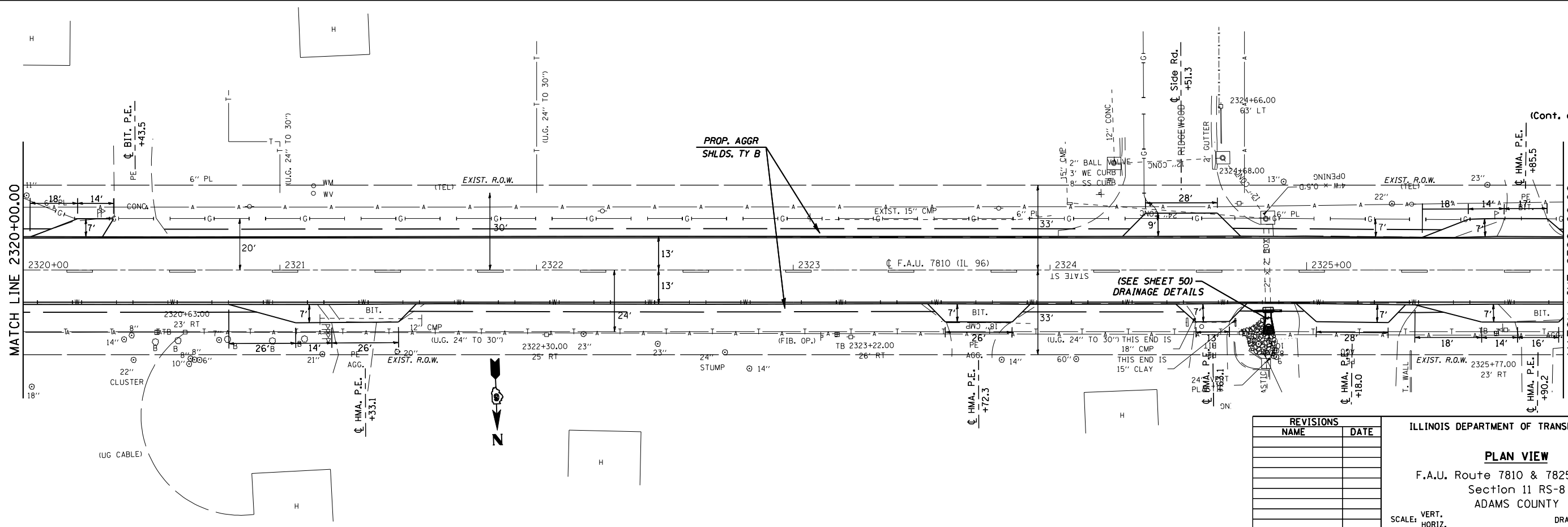
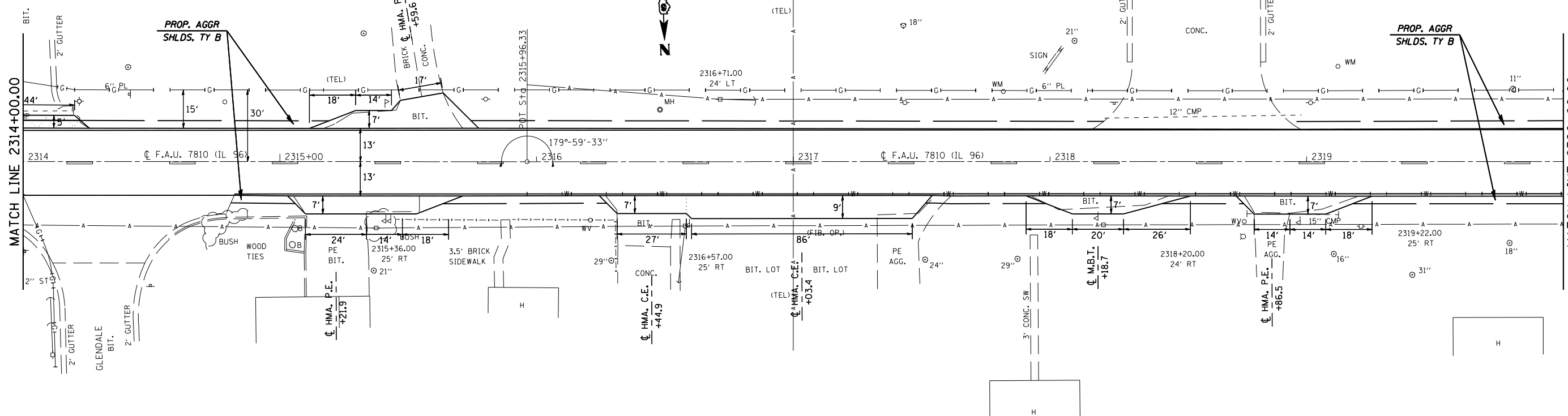


CONTRACT NO. 72943

F.A.U. RTE.	SECTION	COUNTY	TOTAL SHEETS	SHEET NO.
• 7810 & 7825 (IL 96)	11RS-8	ADAMS	64	30
STA. 2314+00.00 TO STA. 2326+00.00				
FED. ROAD DIST. NO. ILLINOIS FED. AID PROJECT				

(From Pg. 28)



(Cont. on Pg. 31)

PLOT DATE = No-02-2007 01:44:46PM  
 FILE NAME = c:\p\projects\650605\shplan11rs.dgn  
 PLOT SCALE = 42.3525' / IN.  
 USER NAME = laughlin-1

D6 PROJECT: D650605 FILE: SHTPLAN11RS.DGN

REVISIONS	
NAME	DATE

ILLINOIS DEPARTMENT OF TRANSPORTATION

**PLAN VIEW**

F.A.U. Route 7810 & 7825 (IL 96)  
 Section 11 RS-8  
 ADAMS COUNTY

SCALE: VERT.      DRAWN BY: JWC  
 HORIZ.            CHECKED BY: RSC  
 DATE: FEBRUARY 2, 2006