

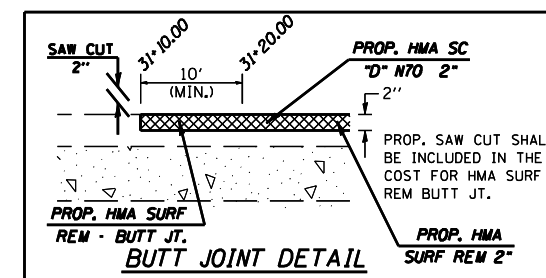
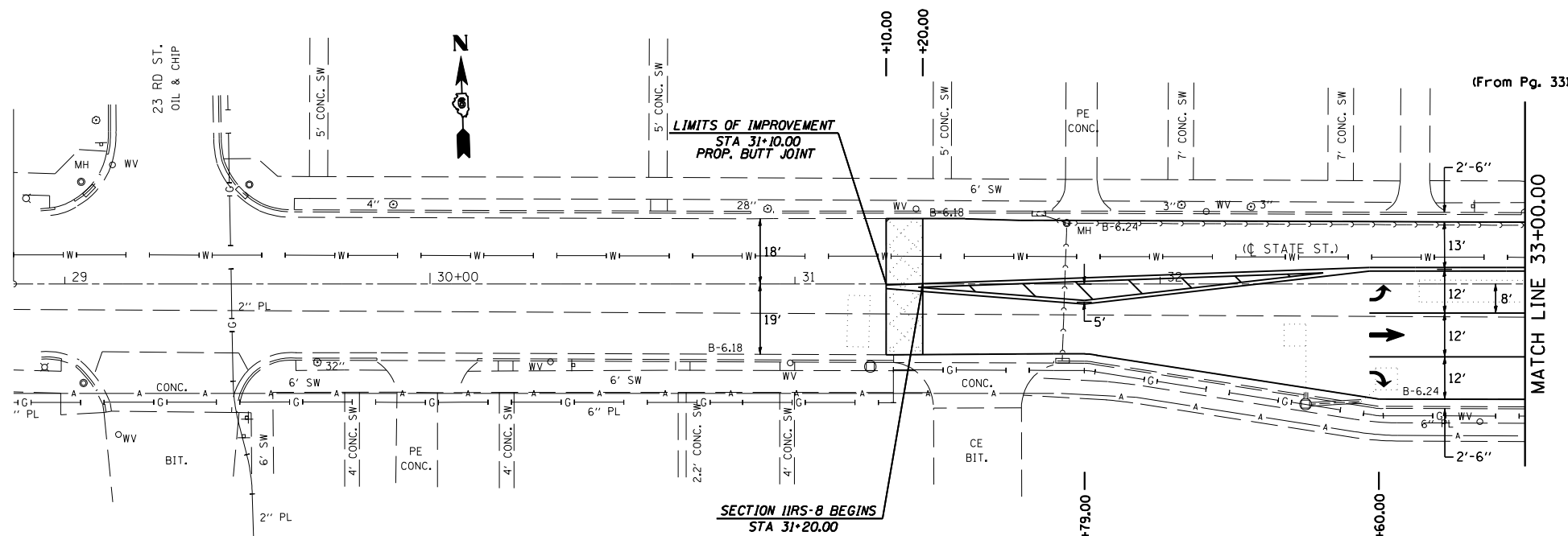
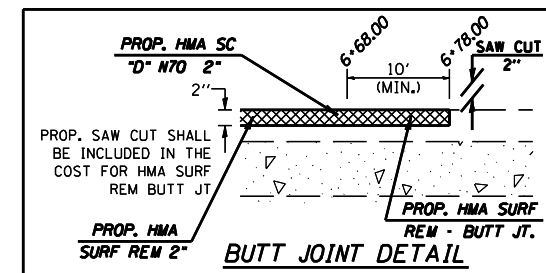
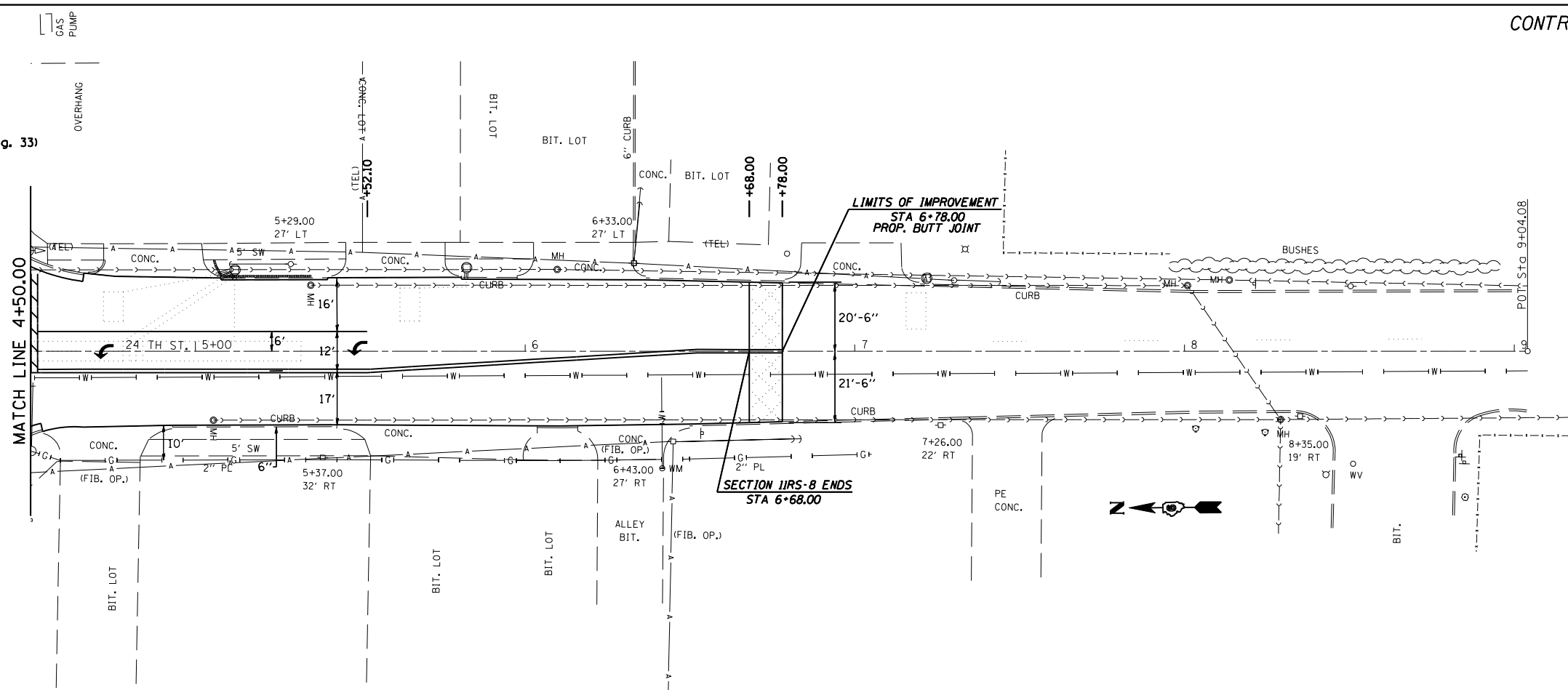
CONTRACT NO. 72943

F.A.U. RTE.	SECTION	COUNTY	TOTAL SHEETS	SHEET NO.
*	11RS-8	ADAMS	64	35

STA. **	TO STA. **
FED. ROAD DIST. NO.	ILLINOIS FED. AID PROJECT
* 7810 & 7825 (IL 96)	

** 24TH ST. - 4+50.00 TO 9+04.08
 ** STATE ST. - 29+00.00 TO 33+00.00

(From Pg. 33)



REVISIONS	
NAME	DATE

ILLINOIS DEPARTMENT OF TRANSPORTATION

PLAN VIEW

F.A.U. Route 7810 & 7825 (IL 96)
 Section 11 RS-8
 ADAMS COUNTY

SCALE: VERT. / HORIZ.
 DATE: FEBRUARY 2, 2006
 DRAWN BY: JWC
 CHECKED BY: RSC

PLOT DATE = Nov-02-2007 01:14:52PM
 FILE NAME = c:\projects\650605\shplan\11rs.dgn
 PLOT SCALE = 42.3525' / IN.
 USER NAME = laughlin-1