

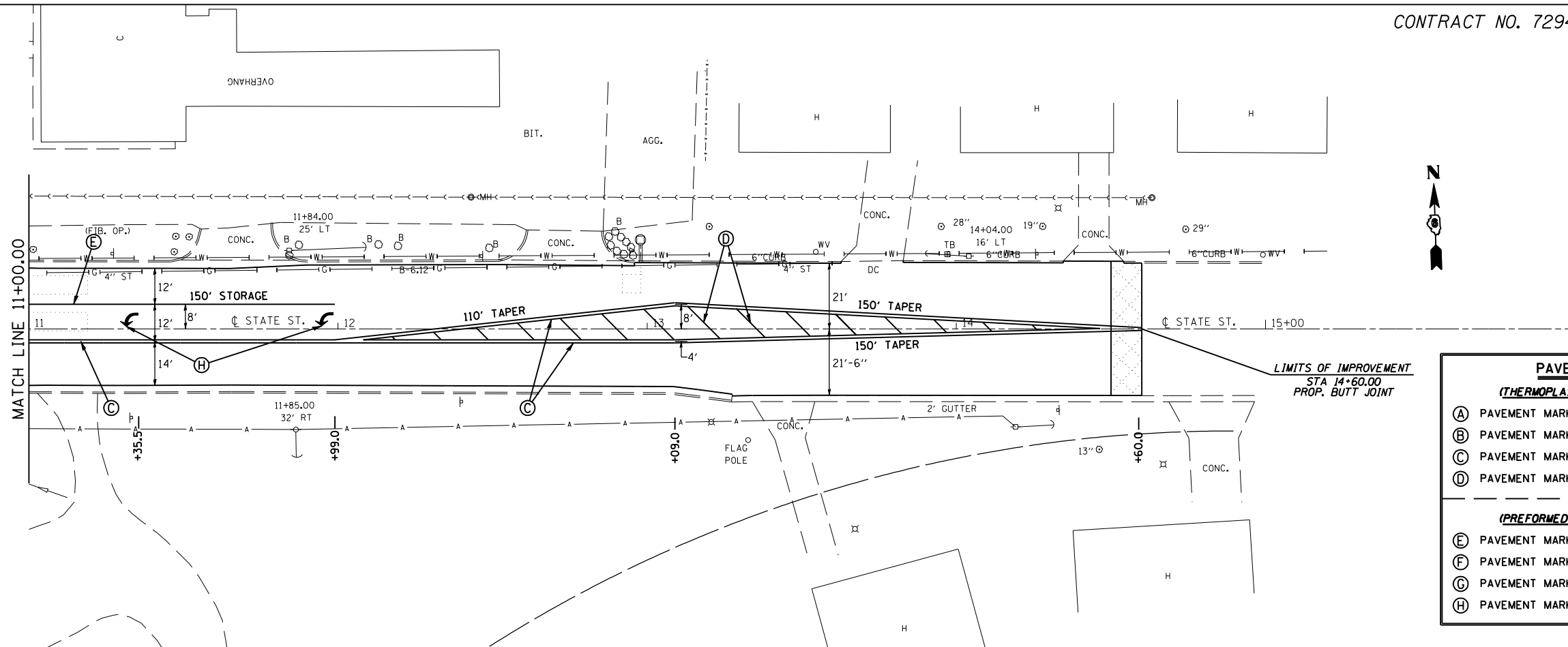
CONTRACT NO. 72943

F.A.U. RTE.	SECTION	COUNTY	TOTAL SHEETS	SHEET NO.
11RS-8	ADAMS	64	37	

STA. **	TO STA. **
FED. ROAD DIST. NO.	ILLINOIS FED. AID PROJECT
* 7810 & 7825 (IL 96)	

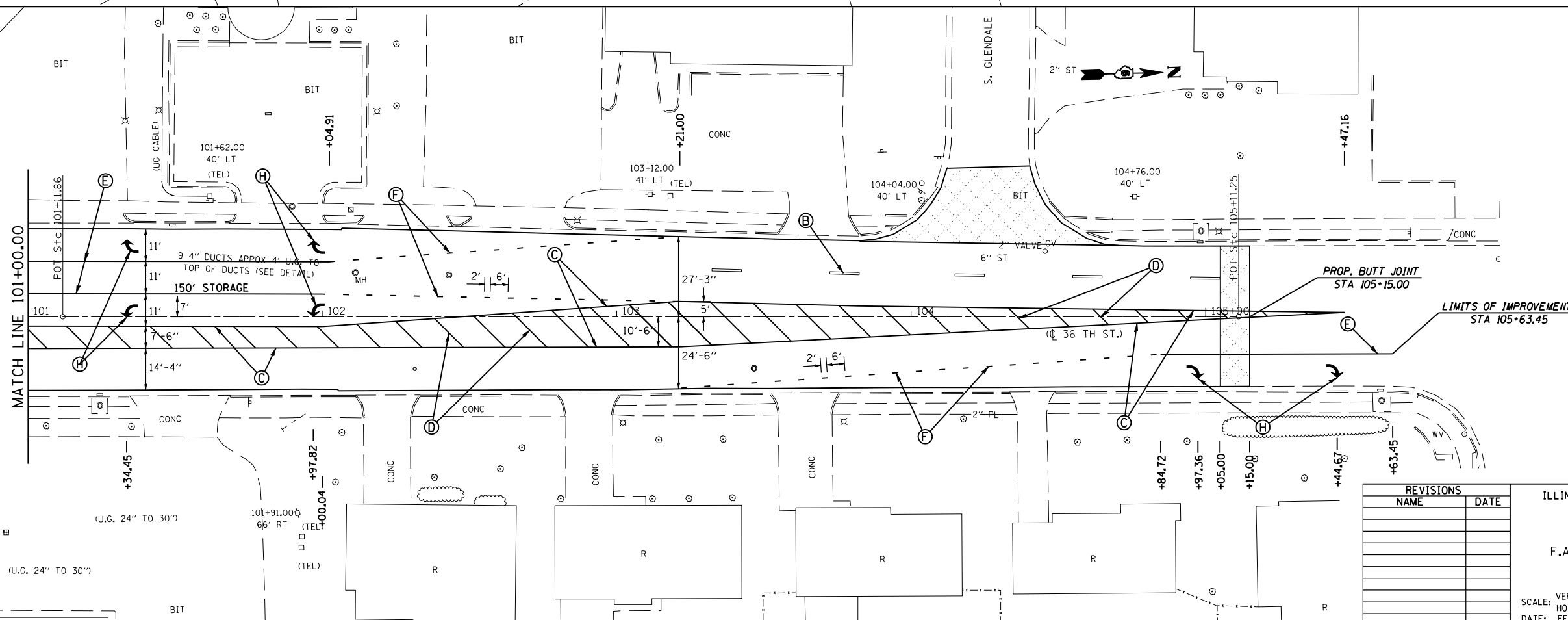
\*\* STATE ST. - 11+00.00 TO 14+60.00  
 \*\* 36TH ST. - 101+00.00 TO 105+15.00

(From Pg. 36)



PAVEMENT MARKING LEGEND	
<i>(THERMOPLASTIC)</i>	
(A)	PAVEMENT MARKING - LINE - 5" WHITE (SOLID)
(B)	PAVEMENT MARKING - LINE - 5" YELLOW (SKIP-DASH)
(C)	PAVEMENT MARKING - LINE - 5" DOUBLE YELLOW (SOLID)
(D)	PAVEMENT MARKING - LINE - 12" YELLOW (SOLID)
<i>(PREFORMED PLASTIC, TYPE B)</i>	
(E)	PAVEMENT MARKING - LINE - 6" WHITE (SOLID)
(F)	PAVEMENT MARKING - LINE - 6" WHITE (SKIP-DASH)
(G)	PAVEMENT MARKING - LINE - 24" WHITE (SOLID)
(H)	PAVEMENT MARKING - LETTERS & SYMBOLS WHITE (SOLID)

(From Pg. 36)



REVISIONS	
NAME	DATE

ILLINOIS DEPARTMENT OF TRANSPORTATION  
**PAVEMENT MARKING DETAIL**  
 F.A.U. Route 7810 & 7825 (IL 96)  
 Section 11 RS-8  
 ADAMS COUNTY  
 SCALE: VERT. / HORIZ.  
 DATE: FEBRUARY 1, 2006  
 DRAWN BY: JWC  
 CHECKED BY: RSC

PLOT DATE = Nov-02-2007 08:44:56PM  
 FILE NAME = c:\projects\650605\shpvtmrk196.dgn  
 PLOT SCALE = 42.352% / IN.  
 USER NAME = taugh1mr-1