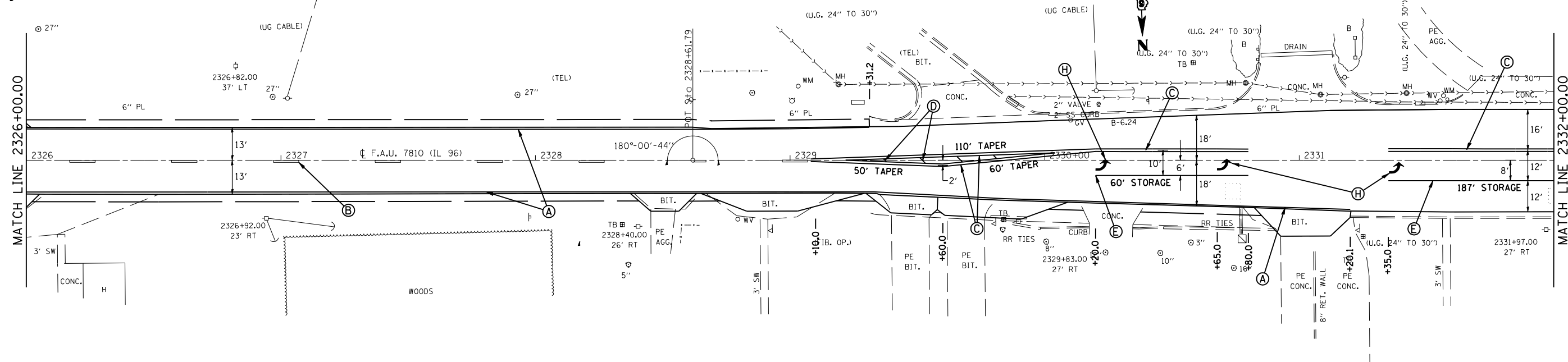


CONTRACT NO. 72943

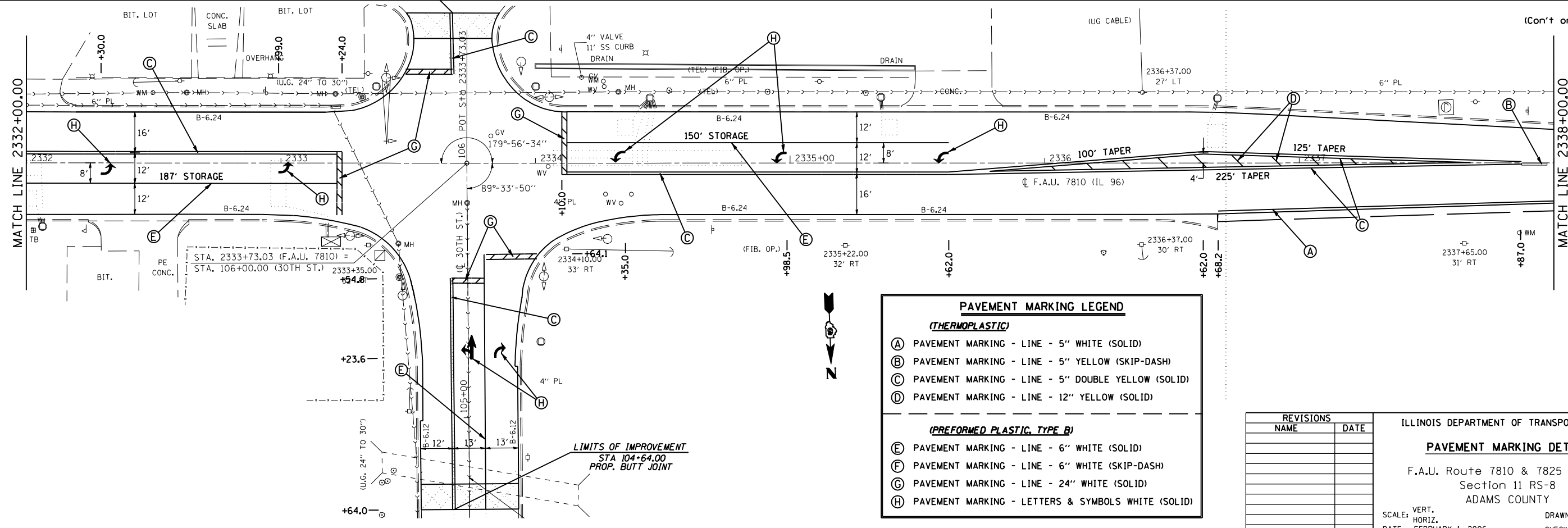
F.A.U. RTE.	SECTION	COUNTY	TOTAL SHEETS	SHEET NO.
•	11RS-8	ADAMS	64	39
STA. **		TO STA. **		
FED. ROAD DIST. NO.	ILLINOIS	FED. AID PROJECT		
• 7810 & 7825 (IL 96)				
• IL 96 - 2326+00.00 to 2338+00.00				
30TH ST - 104+54.00 to 106+00.00				

(From Pg. 38)



LIMITS OF IMPROVEMENT
S. LEG OF INTRSECTN.
PROP. BUTT JOINT

(Con't on Pg. 40)



PAVEMENT MARKING LEGEND	
(THERMOPLASTIC)	
(A)	PAVEMENT MARKING - LINE - 5" WHITE (SOLID)
(B)	PAVEMENT MARKING - LINE - 5" YELLOW (SKIP-DASH)
(C)	PAVEMENT MARKING - LINE - 5" DOUBLE YELLOW (SOLID)
(D)	PAVEMENT MARKING - LINE - 12" YELLOW (SOLID)
(PREFORMED PLASTIC, TYPE B)	
(E)	PAVEMENT MARKING - LINE - 6" WHITE (SOLID)
(F)	PAVEMENT MARKING - LINE - 6" WHITE (SKIP-DASH)
(G)	PAVEMENT MARKING - LINE - 24" WHITE (SOLID)
(H)	PAVEMENT MARKING - LETTERS & SYMBOLS WHITE (SOLID)

REVISIONS	
NAME	DATE

ILLINOIS DEPARTMENT OF TRANSPORTATION
PAVEMENT MARKING DETAIL
 F.A.U. Route 7810 & 7825 (IL 96)
 Section 11 RS-8
 ADAMS COUNTY
 SCALE: VERT. _____
 HORIZ. _____
 DATE: FEBRUARY 1, 2006
 DRAWN BY: JWC
 CHECKED BY: RSC

PLOT DATE = Nov-20-2007 01:44:57PM
 FILE NAME = c:\projects\650605\shpvtmrk1196.dgn
 PLOT SCALE = 42.352% / IN.
 USER NAME = laughlin-1