

F.A.P. RTE.	SECTION	COUNTY	TOTAL SHEETS	SHEET NO.
320	-	LOGAN	12	1

D-6 SHLDR RUMBLE STRIPS 2008-4

STATE OF ILLINOIS
DEPARTMENT OF TRANSPORTATION
DIVISION OF HIGHWAYS

**PROPOSED
HIGHWAY PLANS**

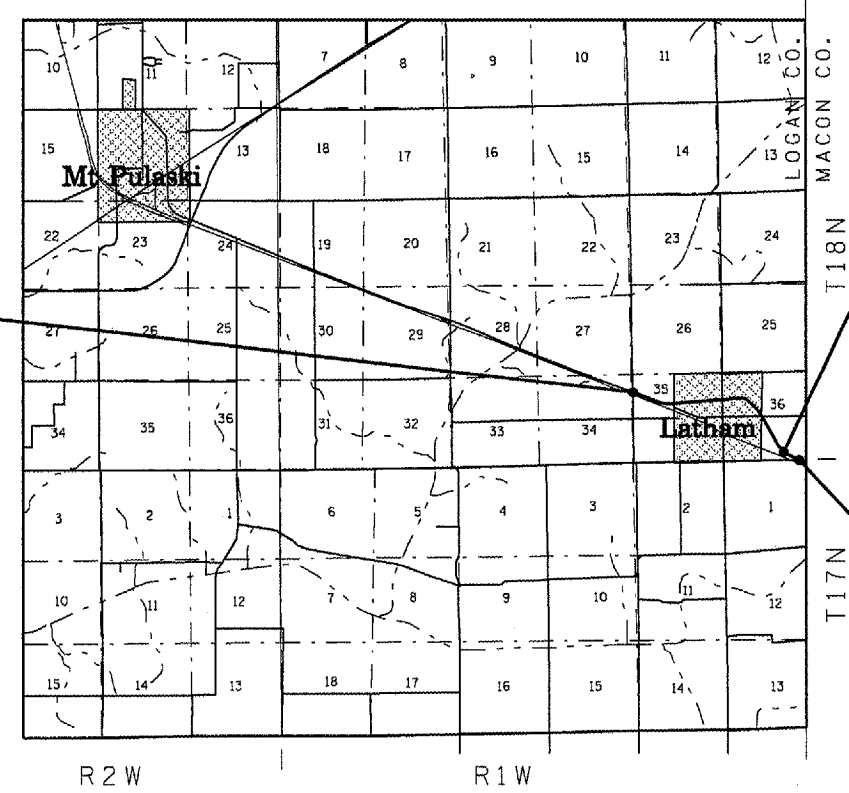
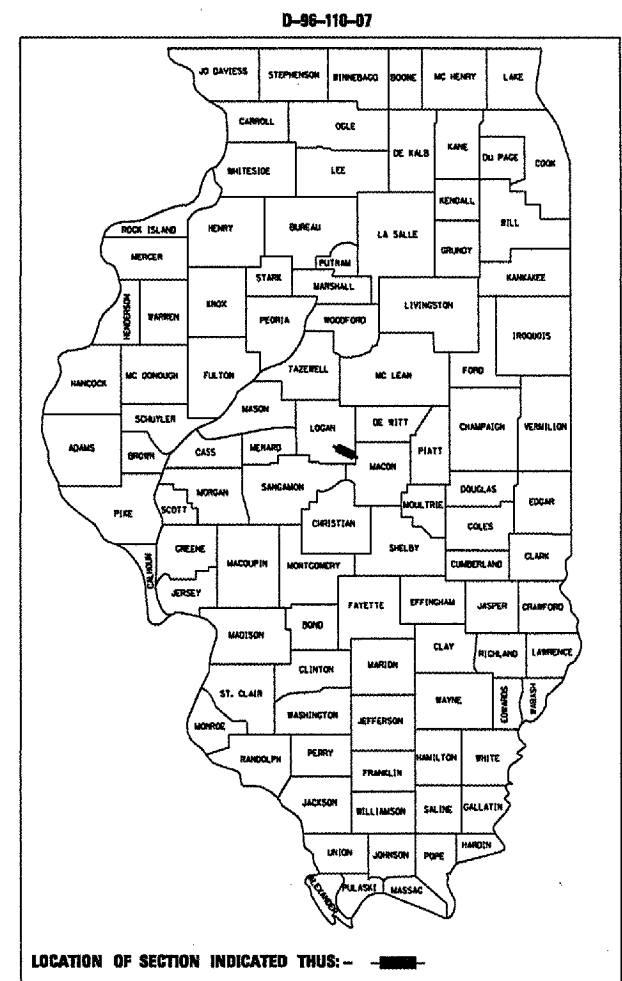
FAP ROUTE 320 (IL 121)
SECTION D-6 SHLDR RUMBLE STRIPS 2008-4
PROJECT : ACHSIP-0320(034)
LOGAN COUNTY
C-96-110-07

INDEX OF SHEETS

- 1 COVER SHEET
- 2 GENERAL NOTES
- 3 SUMMARY OF QUANTITIES
- 4-5 SCHEDULE OF QUANTITIES
- 6-7 TYPICAL SECTIONS
- 8 SHOULDER & RUMBLE STRIP DETAILS
- 9-10 LINE DIAGRAM SHEETS
- 11-12 SIGN DETAILS

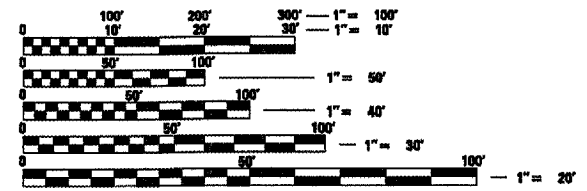
STANDARDS

000001-05	701306-01
482011-03	701311-02
701001-01	701326-02
701006-02	701901
701011-01	720001
701201-02	720006-01
701301-02	728001
	780001-01



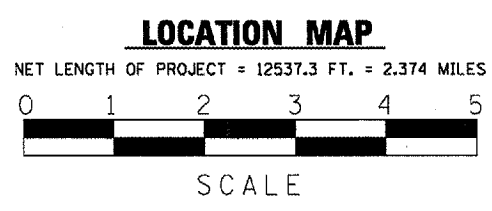
STATION EQUATION
STA. 438+91.40 BK.
STA. 434+30.10 AH.

END PROJECT
STA. 443+90



FULL SIZE PLANS HAVE BEEN PREPARED USING STANDARD ENGINEERING SCALES. REDUCED SIZED PLANS WILL NOT CONFORM TO STANDARD SCALES. IN MAKING MEASUREMENTS ON REDUCED PLANS, THE ABOVE SCALES MAY BE USED.

J.U.L.I.E.
JOINT UTILITY LOCATION INFORMATION FOR EXCAVATION
1-800-892-0123



STATE OF ILLINOIS
DEPARTMENT OF TRANSPORTATION
DIVISION OF HIGHWAYS

SUBMITTED 10/29/07

[Signature]
DEPUTY DIRECTOR OF HIGHWAYS, REGION ENGINEER

February 1, 2008
[Signature]
ENGINEER OF DESIGN AND ENVIRONMENT

February 1, 2008
[Signature]
DIRECTOR OF HIGHWAYS, CHIEF ENGINEER

**PRINTED BY THE AUTHORITY
OF THE STATE OF ILLINOIS**

PROJECT ENGINEER: SAL MADONIA 217-782-4761
SQUAD LEADER: KEN ANDERSON 217-524-7546

F.A.P. RTE.	SECTION	COUNTY	TOTAL SHEETS	SHEET NO.
320	*		12	2
STA.		TO STA.		
FED. ROAD DIST. NO.	ILLINOIS	FED. AID PROJECT		

* D-6 SHLDR RUMBLE STRIPS 2008-4

GENERAL NOTES

1. ANY REFERENCE TO A STANDARD IN THESE PLANS SHALL BE INTERPRETED TO MEAN THE EDITION AS INDICATED BY THE SUB NUMBER LISTED IN THE INDEX OF SHEETS OR THE COPY OF THE STANDARD INCLUDED IN THESE PLANS.
2. IN ADDITION TO FIELD SURVEYS, PLAN DIMENSIONS AND DETAILS RELATIVE TO THE EXISTING FACILITIES HAVE BEEN TAKEN FROM EXISTING PLANS AND ARE SUBJECT TO CONSTRUCTION VARIATIONS. IT SHALL BE THE CONTRACTOR'S RESPONSIBILITY TO VERIFY SUCH DIMENSIONS AND DETAILS IN THE FIELD. SUCH VARIATIONS SHALL NOT BE A CAUSE FOR ADDITIONAL COMPENSATION DUE TO A CHANGE IN THE SCOPE OF WORK; HOWEVER, THE CONTRACTOR WILL BE PAID FOR THE QUANTITY ACTUALLY FURNISHED AT THE UNIT PRICE BID FOR THE WORK.
3. ACCESS TO ALL ENTRANCES AND SIDE ROADS SHALL BE MAINTAINED AT ALL TIMES.
4. THE CONTRACTOR SHALL BE RESPONSIBLE FOR PROTECTING UTILITY PROPERTY FROM CONSTRUCTION OPERATIONS, AS OUTLINED IN ARTICLE 107.31 OF THE STANDARD SPECIFICATIONS. THE J.U.L.I.E. NUMBER IS 1-800-892-0123. A MINIMUM OF 48 HOURS ADVANCE NOTICE IS REQUIRED.
5. UNLESS DIRECTED BY THE ENGINEER, PAVEMENT MARKING LINES SHALL NOT BE LAID DIRECTLY OVER A LONGITUDINAL CRACK OR JOINT NOR OVER A TAR OR ASPHALT PAINTED LINE. THE EDGE OF A CENTERLINE OR LANE LINE SHALL BE OFFSET A MINIMUM DISTANCE OF 2" FROM A LONGITUDINAL CRACK OR JOINT. EDGE LINES SHALL BE APPROXIMATELY 2" FROM THE EDGE LINE OF PAVEMENT. SEE SECTION 780 OF THE STANDARD SPECIFICATIONS FOR TRAFFIC CONTROL ITEMS.
6. THE EXISTING ROAD SIGNS THAT INTERFERE WITH CONSTRUCTION WILL BE REMOVED OR RELOCATED AS DIRECTED BY THE ENGINEER. AFTER THE CONSTRUCTION IS COMPLETED, THE CONTRACTOR WILL REPLACE THE SIGNS AS DIRECTED BY THE ENGINEER. THIS WORK WILL NOT BE PAID SEPARATELY BUT SHALL BE CONSIDERED INCLUDED IN THE CONTRACT, AND NO COMPENSATION WILL BE ALLOWED.
7. THE CONTRACTOR WILL BE REQUIRED TO CONTACT THE OPERATIONS ENGINEER (217) 782-7314 AT LEAST 72 HOURS PRIOR TO DRIVING ANY POSTS TO MAKE SURE STATE OWNED UTILITIES ARE NOT IN THE WAY.
8. THE CONTRACTOR WILL BE REQUIRED TO TO REPAIR ANY AREAS OF TURF THAT ARE DAMAGED DURING THE EXECUTION OF THIS CONTRACT. THIS WORK WILL NOT BE PAID SEPARATELY BUT SHALL BE CONSIDERED INCLUDED IN THE CONTRACT, AND NO COMPENSATION WILL BE ALLOWED.
9. ALL SIGNS SHALL HAVE A PRELIMINARY LAYOUT. SIGN POSTS SHALL BE ADJUSTED SO AS TO MISS ANY SHOULDER DRAINS, INLETS, PIPE CULVERTS, STROM SEWER OR ANY OTHER HAZARD THAT MAY INTERFERE WITH CONSTRUCTION.
10. SIGN TO BE REMOVED AND ALL HARDWARE FROM SIGN REMOVAL AND SIGN RELOCATION SHALL BECOME PROPERTY OF THE CONTRACTOR.
11. THE FOLLOWING RATES OF APPLICATION HAVE BEEN USED TO CALCULATE THE PLAN QUANTITIES:
 HOT - MIX ASPHALT SHOULDERS 0.056 TON / SQ. YD. PER 1"
 AGGREGATE MATERIAL 2.05 TON/CU. YD.

THE FOLLOWING MIXTURE REQUIREMENTS ARE APPLICABLE FOR THIS PROJECT:

MIXTURE USE(S):	HMA SHLDRS
ACPG:	PG 58-22
DESIGN AIR VOIDS:	2.0 @ N DES=30
MIXTURE COMPOSITION:	BAM
(GRADATION MIXTURE)	NA
FRICITION AGREGATE:	

DISTRICT SIX	
EXAMINED	October 23 20 07 <i>Sam Hoast</i>
OPERATIONS ENGINEER	
EXAMINED	Oct. 25 20 07 <i>W.R. Frey</i>
PROGRAM IMPLEMENTATION ENGINEER	
EXAMINED	Oct 17 20 07 <i>W.R. Frey</i>
PROGRAM DEVELOPMENT ENGINEER	

REVISIONS	
NAME	DATE

ILLINOIS DEPARTMENT OF TRANSPORTATION
GENERAL NOTES
 FAP 320 (IL 121)
 SECT. D-6 SHLDR RUMBLE STRIPS 2008-4
 LOGAN COUNTY

SCALE: VERT. DRAWN BY
 DATE HORIZ. CHECKED BY

F.A.P. RTE.	SECTION	COUNTY	TOTAL SHEETS	SHEET NO.
320	*	LOGAN	12	3
STA.		TO STA.		
FED. ROAD DIST. NO.		ILLINOIS FED. AID PROJECT		

* D-6 SHLDR RUMBLE STRIPS 2008-4

ILLINOIS DEPARTMENT OF TRANSPORTATION
SUMMARY OF QUANTITIES

CODE NO.	ITEM	UNIT	90% FEDERAL 10% STATE TOTAL QUANTITY	RURAL ROADWAY	CONSTRUCTION CODE TYPE	
				SFTY-2A		
20200600	EXCAVATING AND GRADING EXISTING SHOULDER	UNIT	231	231		
48101200	AGGREGATE SHOULDERS, TYPE B	TON	1373	1373		
48203029	HOT-MIX ASPHALT SHOULDERS, 8"	SO YD	7699	7699		
64200105	SHOULDER RUMBLE STRIP	FOOT	23904	23904		
67000400	ENGINEER'S FIELD OFFICE, TYPE A	CAL MO	2	2		
67100100	MOBILIZATION	L SUM	1	1		
70100450	TRAFFIC CONTROL AND PROTECTION, STANDARD 701201	L SUM	1	1		
70100460	TRAFFIC CONTROL AND PROTECTION, STANDARD 701306	L SUM	1	1		
70100500	TRAFFIC CONTROL AND PROTECTION, STANDARD 701326	L SUM	1	1		
70103815	TRAFFIC CONTROL SURVEILLANCE	CAL DA	15	15		
* 72000100	SIGN PANEL - TYPE 1	SO FT	57.2	57.2		
* 72400310	REMOVE SIGN PANEL - TYPE 1	SO FT	36	36		
* 72800100	TELESCOPING STEEL SIGN SUPPORT	FOOT	48	48		
* 78001120	PAINT PAVEMENT MARKING LINE - 5"	FOOT	24264	24264		

* SPECIALTY ITEMS

REVISIONS		ILLINOIS DEPARTMENT OF TRANSPORTATION	
NAME	DATE	SUMMARY OF QUANTITIES	
		FAP 320 (IL 121)	
		SECT. D-6 SHLDR RUMBLE STRIPS 2008-4	
		LOGAN COUNTY	
		SCALE: VERT.	DRAWN BY
		HORIZ.	CHECKED BY
		DATE	

F.A.P. RTE.	SECTION	COUNTY	TOTAL SHEETS	SHEET NO.
320	-	LOGAN	12	4
STA.		TO STA.		
FED. ROAD DIST. NO.		ILLINOIS FED. AID PROJECT		

D-6 SHLDR RUMBLE STRIPS 2008-4

EXCAVATING AND GRADING EXISTING SHOULDER SCHEDULE					
LOCATION STATION TO STATION		TOTAL LENGTH (FT)	SEE NOTE 1 LENGTH (FT)	LENGTH (UNIT)	
FAP 320 (IL 121)					
RT. STA. 323+14.00	TO RT. STA. 345+00.00	2186.0	2079.0	20.8	
LT. STA. 323+14.00	TO LT. STA. 345+00.00	2186.0	2075.0	20.8	
RT. STA. 345+00.00	TO RT. STA. 376+42.00	3142.0	3025.5	30.3	
LT. STA. 345+00.00	TO LT. STA. 376+42.00	3142.0	3096.5	31.0	
RT. STA. 376+42.00	TO RT. STA. 403+43.00	2701.0	2596.5	26.0	
LT. STA. 376+42.00	TO LT. STA. 403+43.00	2701.0	2608.5	26.1	
RT. STA. 403+43.00	TO RT. STA. 438+91.40	3548.4	3222.4	32.2	
LT. STA. 403+43.00	TO LT. STA. 438+91.40	3548.4	3501.4	35.0	
STA. EQ. 438+91.4 BK. = STA. 434+30.10 AH.					
RT. STA. 434+30.10	TO RT. STA. 439+20.00	489.9	489.9	4.9	
LT. STA. 434+30.10	TO LT. STA. 439+20.00	489.9	401.9	4.0	
RT. STA. 439+20.00	TO RT. STA. 443+90.00	470.0	-	-	
LT. STA. 439+20.00	TO LT. STA. 443+90.00	470.0	-	-	
TOTAL		25,074.6	23,096	231.0	

HOT-MIX ASPHALT SHOULDERS, 8" SCHEDULE					
LOCATION STATION TO STATION		PROP. BIT. SHOULDERS WIDTH (FT)	TOTAL LENGTH (FT)	SEE NOTE 1 LENGTH (FT)	HOT-MIX ASPHALT SHOULDERS, 8" (SQ YD)
FAP 320 (IL 121)					
RT. STA. 323+14.00	TO RT. STA. 345+00.00	3	2186.0	2079.0	693.0
LT. STA. 323+14.00	TO LT. STA. 345+00.00	3	2186.0	2075.0	691.7
RT. STA. 345+00.00	TO RT. STA. 376+42.00	3	3142.0	3025.5	1008.5
LT. STA. 345+00.00	TO LT. STA. 376+42.00	3	3142.0	3096.5	1032.2
RT. STA. 376+42.00	TO RT. STA. 403+43.00	3	2701.0	2596.5	865.5
LT. STA. 376+42.00	TO LT. STA. 403+43.00	3	2701.0	2608.5	869.5
RT. STA. 403+43.00	TO RT. STA. 438+91.40	3	3548.0	3222.4	1074.1
LT. STA. 403+43.00	TO LT. STA. 438+91.40	3	3548.0	3501.0	1167.0
STA. EQ. 438+91.4 BK. = STA. 434+30.10 AH.					
RT. STA. 434+30.10	TO RT. STA. 439+20.00	3	489.9	489.9	163.3
LT. STA. 434+30.10	TO LT. STA. 439+20.00	3	489.9	401.9	134.0
RT. STA. 439+20.00	TO RT. STA. 443+90.00	-	470.0	-	-
LT. STA. 439+20.00	TO LT. STA. 443+90.00	-	470.0	-	-
TOTAL			25,074.6	23096	7,699

SHOULDER RUMBLE STRIP SCHEDULE					
LOCATION STATION TO STATION		SHOULDERS	TOTAL LENGTH (FT)	SEE NOTE 1 LENGTH (FT)	
FAP 320 (IL 121)					
RT. STA. 323+14.00	TO RT. STA. 345+00.00	PROP.	2186.0	2,072.5	
LT. STA. 323+14.00	TO LT. STA. 345+00.00	PROP.	2186.0	2,065.0	
RT. STA. 345+00.00	TO RT. STA. 376+42.00	PROP.	3142.0	3,020.0	
LT. STA. 345+00.00	TO LT. STA. 376+42.00	PROP.	3142.0	3,093.5	
RT. STA. 376+42.00	TO RT. STA. 403+43.00	PROP.	2701.0	2,588.0	
LT. STA. 376+42.00	TO LT. STA. 403+43.00	PROP.	2701.0	2,602.5	
RT. STA. 403+43.00	TO RT. STA. 438+91.40	PROP.	3548.0	3,201.9	
LT. STA. 403+43.00	TO LT. STA. 438+91.40	PROP.	3548.0	3498.0	
STA. EQ. 438+91.4 BK. = STA. 434+30.10 AH.					
RT. STA. 434+30.10	TO RT. STA. 439+20.00	PROP.	489.9	489.9	
LT. STA. 434+30.10	TO LT. STA. 439+20.00	PROP.	489.9	394.9	
RT. STA. 439+20.00	TO RT. STA. 443+90.00	EXIST.	470.0	447.0	
LT. STA. 439+20.00	TO LT. STA. 443+90.00	EXIST.	470.0	431.0	
TOTAL			25,074.6	23,904	

AGGREGATE SHOULDERS, TYPE B SCHEDULE					
LOCATION STATION TO STATION		AGGREGATE SHOULDERS WIDTH (FT)	TOTAL LENGTH (FT)	SEE NOTE 1 LENGTH (FT)	AGGREGATE SHOULDERS, TYPE B (TON)
FAP 320 (IL 121)					
RT. STA. 323+14.00	TO RT. STA. 345+00.00	3	2186.0	2085.5	118.8
LT. STA. 323+14.00	TO LT. STA. 345+00.00	3	2186.0	2085.0	118.8
RT. STA. 345+00.00	TO RT. STA. 376+42.00	3	3142.0	3035.5	172.9
LT. STA. 345+00.00	TO LT. STA. 376+42.00	3	3142.0	3102.5	176.7
RT. STA. 376+42.00	TO RT. STA. 403+43.00	3	2701.0	2613.5	148.8
LT. STA. 376+42.00	TO LT. STA. 403+43.00	3	2701.0	2620.5	149.2
RT. STA. 403+43.00	TO RT. STA. 438+91.40	3	3548.0	3263.9	185.9
LT. STA. 403+43.00	TO LT. STA. 438+91.40	3	3548.0	3507.4	199.7
STA. EQ. 438+91.4 BK. = STA. 434+30.10 AH.					
RT. STA. 434+30.10	TO RT. STA. 439+20.00	3	489.9	489.9	27.9
LT. STA. 434+30.10	TO LT. STA. 439+20.00	3	489.9	413.9	23.6
RT. STA. 439+20.00	TO RT. STA. 443+90.00	3	470.0	450.0	25.6
LT. STA. 439+20.00	TO LT. STA. 443+90.00	3	470.0	434.4	24.7
TOTAL			25074.6	24101.6	1373.0

PLT FILE : No-15-2007 07:51:21 AM
 FILE NAME : 070807-07aucth.dgn
 PLOT SCALE : 1/8"=1'-0"
 USER NAME : jaughlin

NOTE
 1. LENGTHS HAVE BEEN ADJUSTED FOR INTERSECTION AND ENTRANCE OMISSIONS

REVISIONS		ILLINOIS DEPARTMENT OF TRANSPORTATION
NAME	DATE	
		SCHEDULES OF QUANTITIES FAP 320 (IL 121) SECT. D-6 SHLDR RUMBLE STRIPS 2008-4 LOGAN COUNTY

SCALE: VERT. _____
 HORIZ. _____
 DATE _____

DRAWN BY _____
 CHECKED BY _____

F.A.P. RTE.	SECTION	COUNTY	TOTAL SHEETS	SHEET NO.
320	*	LOGAN	12	5
STA.		TO STA.		
FED. ROAD DIST. NO.		ILLINOIS FED. AID PROJECT		
* D-6 SHLDR RUMBLE STRIPS 2008-4				

PAINT PAVEMENT MARKING LINE - 5" SCHEDULE				
LOCATION STATION TO STATION	LOCATION	TOTAL LENGTH (FT)	SEE NOTE 1 LINE 5" (FT)	
FAP 320 (IL 121)				
RT. STA. 323+14.00 TO RT. STA. 438+91.40	EDGE LINE	11577.4	11066.0	
LT. STA. 323+14.00 TO LT. STA. 438+91.40	EDGE LINE	11577.4	11340.0	
STA. EQ. 438+91.4 BK. = STA. 434+30.10 AH.				
RT. STA. 434+30.10 TO RT. STA. 443+90.00	EDGE LINE	959.9	937.0	
LT. STA. 434+30.10 TO LT. STA. 443+90.00	EDGE LINE	959.9	921.0	
TOTAL		25074.6	24264	

SIGN REMOVAL SCHEDULE									
DESCRIPTION OF LOCATION	SIDE	FACING	MUTCD SIGN NO.	SIGN SIZE		REMOVE SIGN PANEL TYPE 1 (SO FT)	MESSAGE	NUMBER OF POSTS TO BE REMOVED	
				WIDTH (INCHES)	HEIGHT (INCHES)				
WEST OF 4TH STREET INTERSECTION	SOUTH	WEST	W2-2R	36	36	9.0	SIDEROAD SYMBOL 90 DEG. RT	1	
EAST OF 4TH STREET INTERSECTION	NORTH	EAST	W2-2L	36	36	9.0	SIDEROAD SYMBOL 90 DEG. LT	1	
WEST OF 300TH STREET INTERSECTION	SOUTH	WEST	W2-2R	36	36	9.0	SIDEROAD SYMBOL 90 DEG. RT	1	
EAST OF 300TH STREET INTERSECTION	NORTH	EAST	W2-2L	36	36	9.0	SIDEROAD SYMBOL 90 DEG. LT	1	
TOTAL						36.0			

NOTE:

1. LENGTHS HAVE BEEN ADJUSTED FOR INTERSECTION AND ENTRANCE OMISSIONS

SIGNAGE SCHEDULE									
DESCRIPTION OF LOCATION	SIDE	FACING	MUTCD SIGN NO.	SIGN SIZE		SIGN PANEL TYPE 1 (SO FT)	MESSAGE	NUMBER OF POSTS	TELESCOPING STEEL SIGN SUPPORT (FOOT)
				WIDTH (INCHES)	HEIGHT (INCHES)				
WEST OF 4TH STREET INTERSECTION	SOUTH	WEST	W1-10L	36	36	9.0	COMBINATION HORIZONTAL ALIGNMENT (LT) SIDEROAD (RT)	1	12
			W16-8	39	9	2.4		4TH STREET	A
EAST OF 4TH STREET INTERSECTION	NORTH	EAST	W1-10R	36	36	9.0	COMBINATION HORIZONTAL ALIGNMENT (RT) SIDEROAD (LT)	1	12
			W16-8	39	9	2.4		4TH STREET	A
WEST OF MAIN STREET INTERSECTION	SOUTH	WEST	W16-8	42	9	2.6	MAIN STREET	B	-
EAST OF MAIN STREET INTERSECTION	NORTH	EAST	W16-8	42	9	2.6	MAIN STREET	B	-
WEST OF 350TH STREET INTERSECTION	SOUTH	WEST	W16-8	45	9	2.8	350TH STREET	B	-
EAST OF 350TH STREET INTERSECTION	NORTH	EAST	W16-8	45	9	2.8	350TH STREET	B	-
WEST OF 300TH STREET INTERSECTION	SOUTH	WEST	W1-10L	36	36	9.0	COMBINATION HORIZONTAL ALIGNMENT (LT) SIDEROAD (RT)	1	12
			W16-8	45	9	2.8		350TH STREET	A
EAST OF 300TH STREET INTERSECTION	NORTH	EAST	W1-10R	36	36	9.0	COMBINATION HORIZONTAL ALIGNMENT (RT) SIDEROAD (LT)	1	12
			W16-8	45	9	2.8		350TH STREET	A
TOTAL						57.2			48

NOTE:

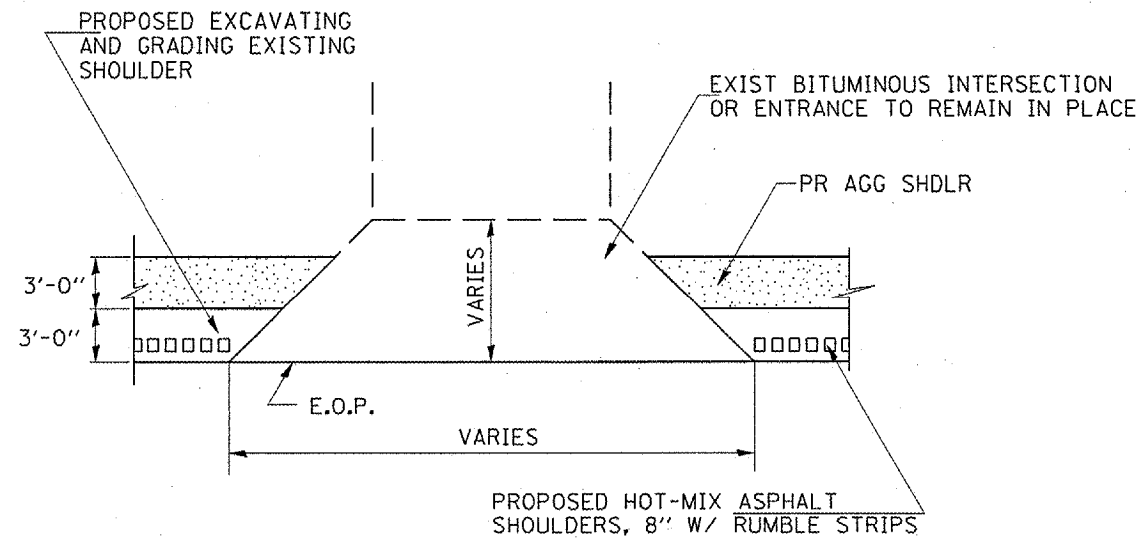
A = TO BE INSTALLED ON PROPOSED CURVE SIGN TELESCOPING STEEL SIGN SUPPORT.
 B = TO BE INSTALLED ON EXISTING CROSSROAD SIGN SUPPORT.

PLOT DATE = Nov-15-2007 09:24:52AM
 PLOT NAME = I:\Projects\72B33\Drawings\72B33.dwg
 PLOT SCALE = 100.0000 / IN
 USER NAME = laughton1

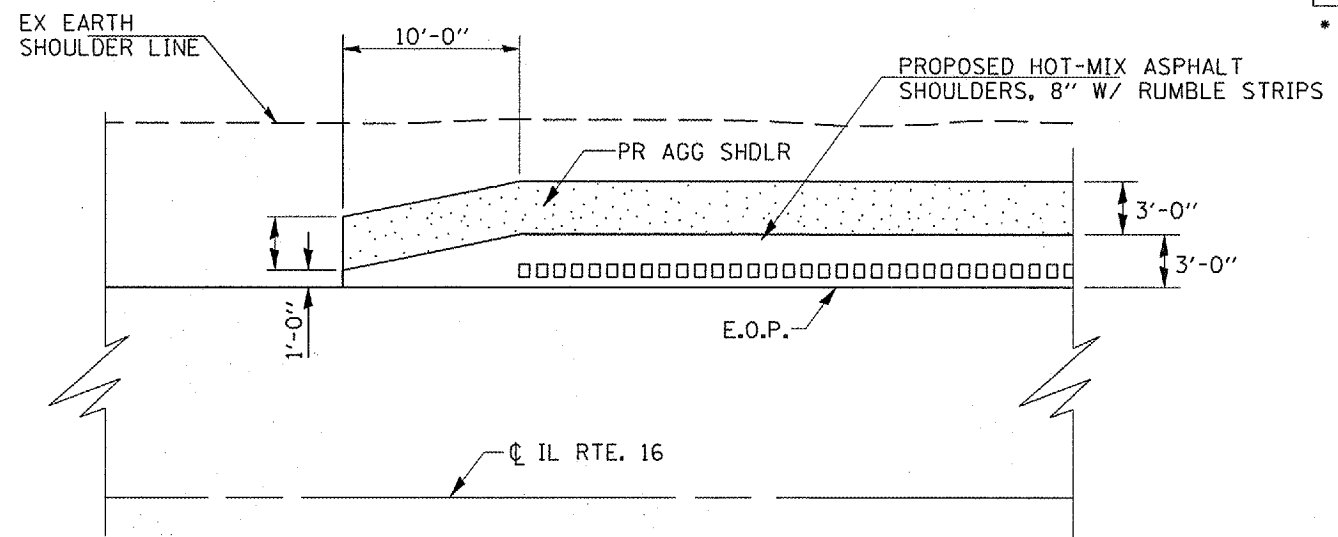
REVISIONS		ILLINOIS DEPARTMENT OF TRANSPORTATION	
NAME	DATE	SCHEDULES OF QUANTITIES	
		FAP 320 (IL 121)	
		SECT. D-6 SHLDR RUMBLE STRIPS 2008-4	
		LOGAN COUNTY	
		SCALE: VERT. DATE	DRAWN BY CHECKED BY

FAP RTE.	SECTION	COUNTY	TOTAL SHEETS	SHEET NO.
320	*	LOGAN	12	8
STA.		TO STA.		
FED. ROAD DIST. NO.		ILLINOIS FED. AID PROJECT		

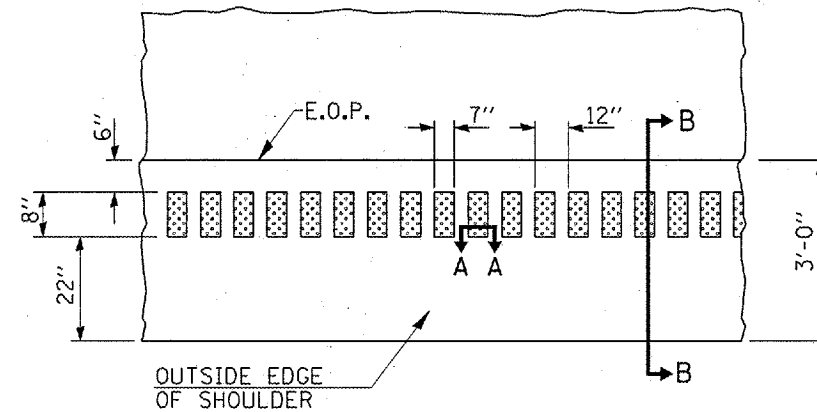
* D-6 SHLDR RUMBLE STRIPS 2008-04



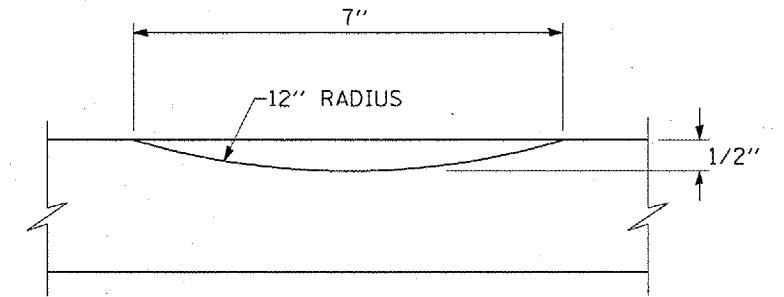
PLAN VIEW
TYPICAL APPLICATION AT
INTERSECTION & ENTRANCE



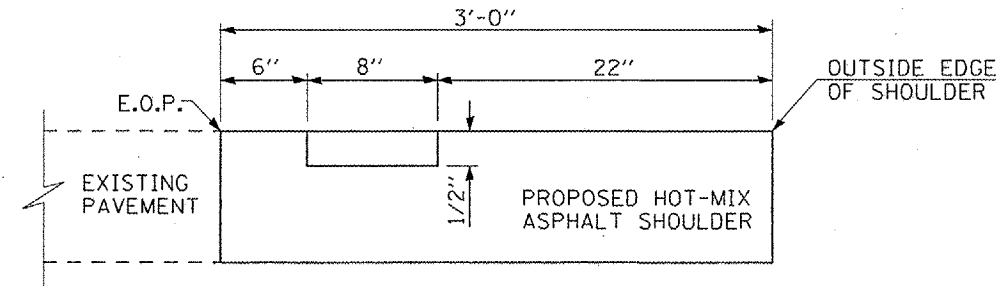
TAPER DETAIL FOR PROPOSED AGGREGATE & HOT-MIX ASPHALT SHOULDERS
 (TRANSITION WIDTH FOR PROPOSED BITUMINOUS SHOULDERS FROM 1'-0" TO 3'-0" WITHIN 10'-0")



PLAN VIEW



SECTION A-A



SECTION B-B

ILLINOIS DEPARTMENT OF TRANSPORTATION
SHOULDER & RUMBLE STRIP DETAILS
 FAP 320 (IL 16)
 SECT. D-6 SHLDR RUMBLE STRIPS 2008-04
 LOGAN COUNTY

DATE _____ DRAWN BY RTS

PLOT DATE = Nov-15-2007 8:24:24 AM
 FILE NAME = c:\p\projects\11877\shld_rumble.dgn
 PLOT SCALE = 1/8"=1'-0"
 USER NAME = laughton1

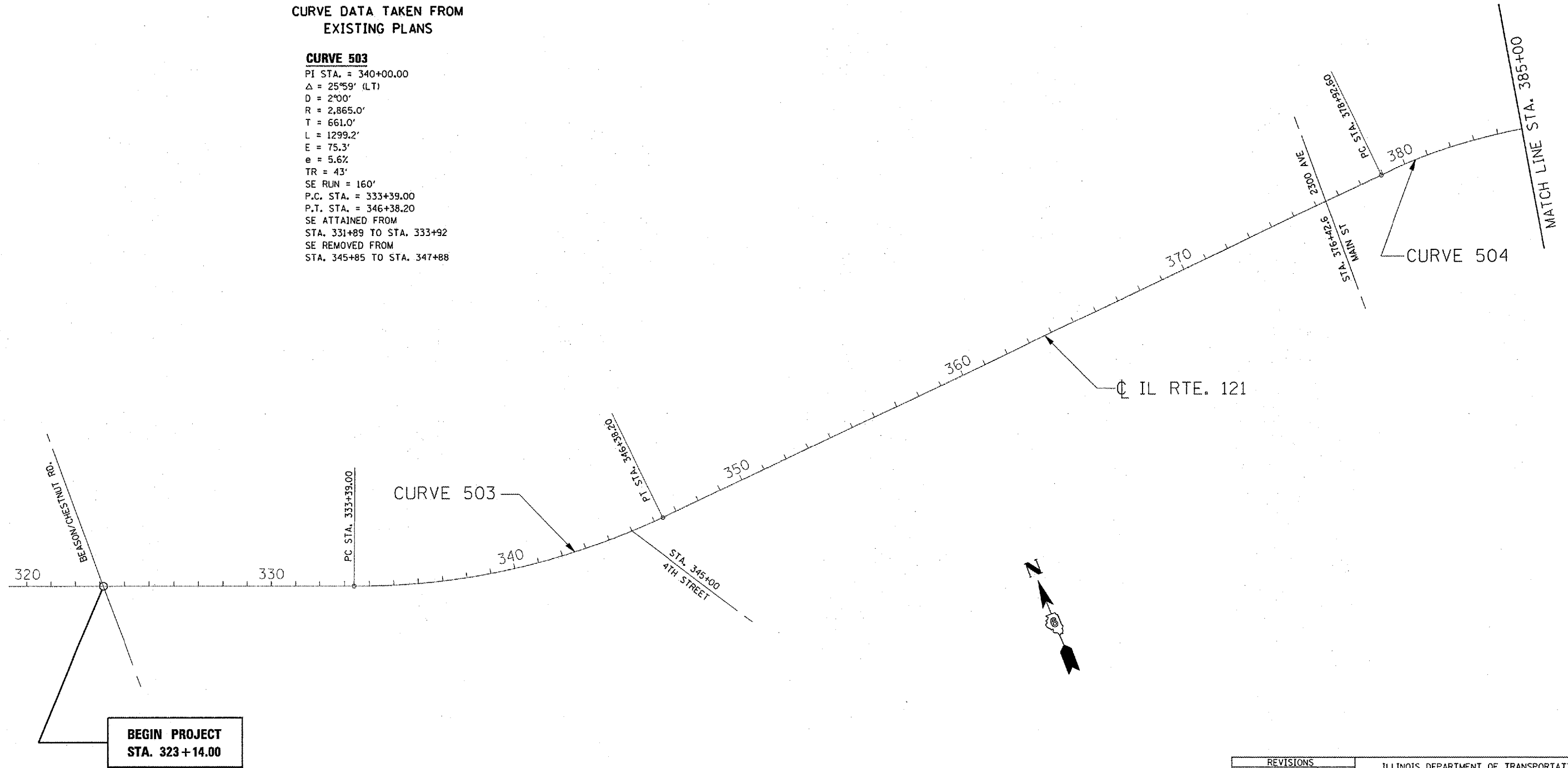
F.A.P. RTE.	SECTION	COUNTY	TOTAL SHEETS	SHEET NO.
320	*	LOGAN	12	9
STA.		TO STA.		
FED. ROAD DIST. NO.		ILLINOIS FED. AID PROJECT		

* D-6 SHLDR RUMBLE STRIPS 2008-4

CURVE DATA TAKEN FROM EXISTING PLANS

CURVE 503

PI STA. = 340+00.00
 Δ = 25°59' (LT)
 D = 2°00'
 R = 2,865.0'
 T = 661.0'
 L = 1299.2'
 E = 75.3'
 e = 5.6%
 TR = 43'
 SE RUN = 160'
 P.C. STA. = 333+39.00
 P.T. STA. = 346+38.20
 SE ATTAINED FROM
 STA. 331+89 TO STA. 333+92
 SE REMOVED FROM
 STA. 345+85 TO STA. 347+88



PLOT DATE = Nov-15-2007 07:24:28AM
 FILE NAME = c:\projects\6611987\line.dwg
 PLOT SCALE = 847.0288 / IN
 USER NAME = Teighlin

**BEGIN PROJECT
 STA. 323+14.00**

REVISIONS	
NAME	DATE

ILLINOIS DEPARTMENT OF TRANSPORTATION
LINE DIAGRAM SHEETS
 FAP 320 (IL 121)
 SECT. D-6 SHLDR RUMBLE STRIPS 2008-4
 LOGAN COUNTY

SCALE: VERT. _____
 HORIZ. _____

DATE _____ DRAWN BY _____
 CHECKED BY _____

