

F.A.P. RTE.	SECTION	COUNTY	TOTAL SHEETS	SHEET NO.
614		CASS	5	1

• (144 BR)I-4

STATE OF ILLINOIS
DEPARTMENT OF TRANSPORTATION
DIVISION OF HIGHWAYS
**PROPOSED
HIGHWAY PLANS**

FAP ROUTE 614 (IL 78)
SECTION (144 BR)I-4

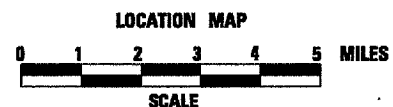
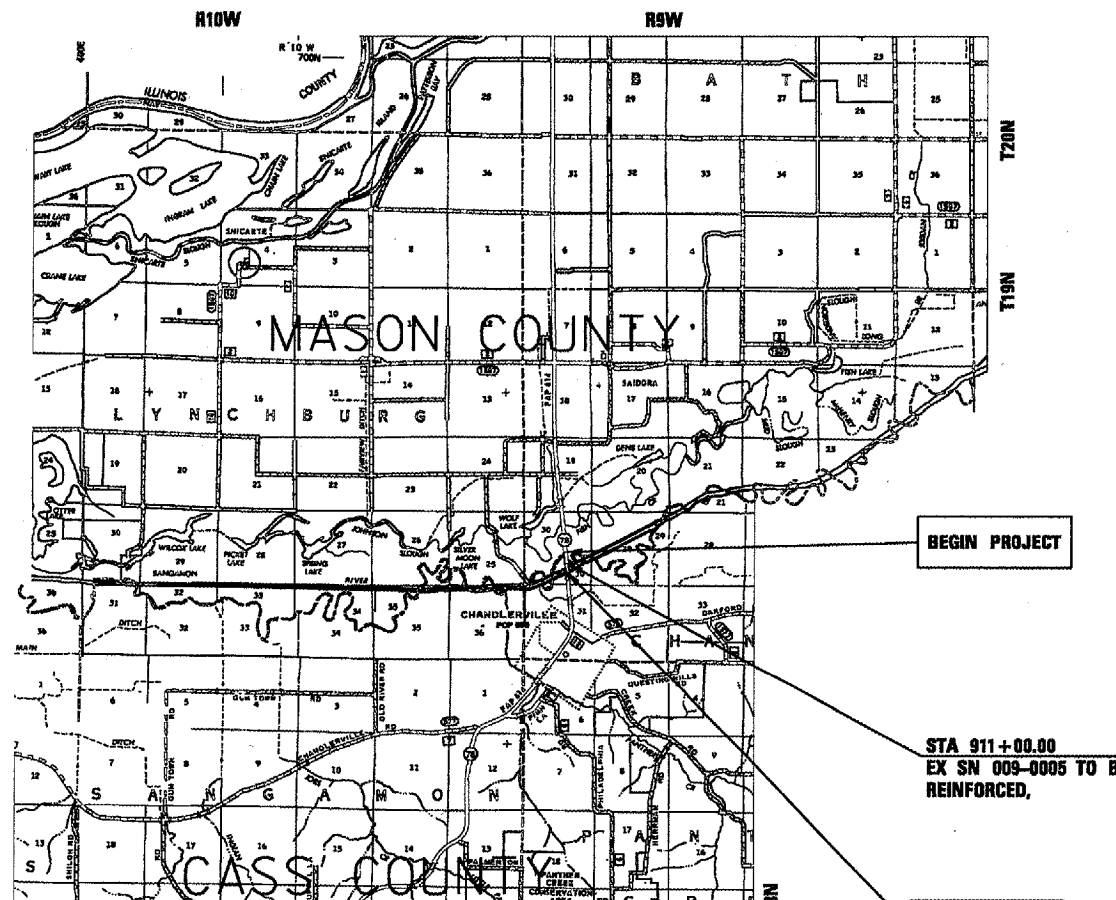
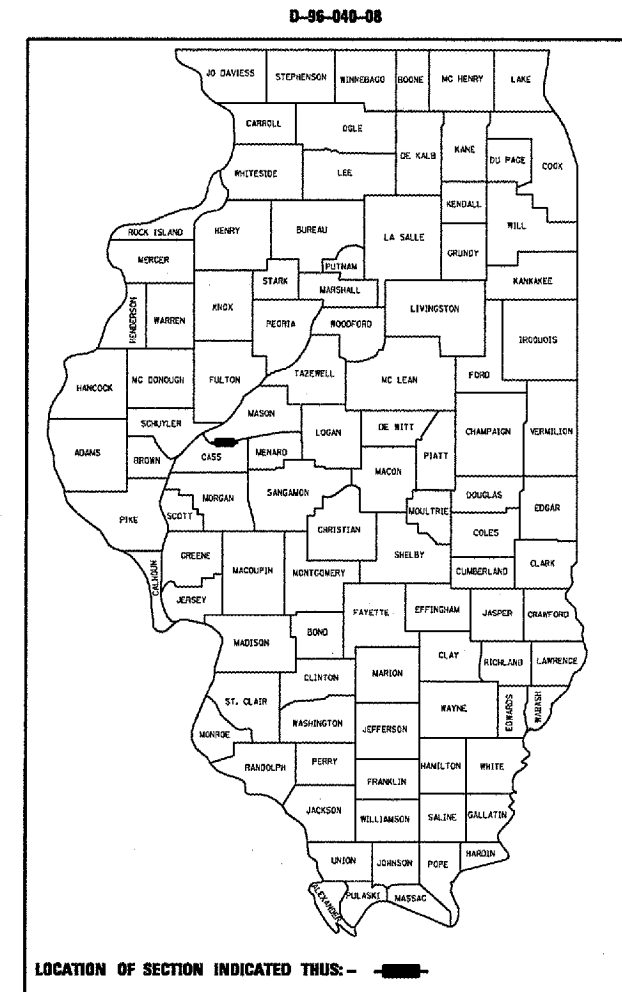
CASS COUNTY
C-96-040-08

INDEX OF SHEETS

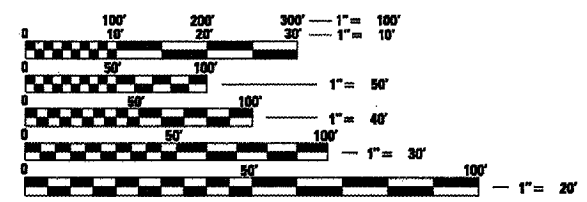
SHT. NO.	DESCRIPTION
1	COVER SHEET
2	GENERAL NOTES / SIGNATURES
3	SUMMARY OF QUANTITIES
4-5	STRUCTURE REPAIR PLANS

LIST OF STANDARDS

- 000001-05
- 001006
- 701001-01
- 701006-02
- 701011-01
- 701901



NET PROJECT LENGTH = 972.0 FEET = 0.18 MILES
TOTAL PROJECT LENGTH = 972.0 FEET = 0.18 MILES



FULL SIZE PLANS HAVE BEEN PREPARED USING STANDARD ENGINEERING SCALES. REDUCED SIZED PLANS WILL NOT CONFORM TO STANDARD SCALES. IN MAKING MEASUREMENTS ON REDUCED PLANS, THE ABOVE SCALES MAY BE USED.

J.U.L.I.E.
JOINT UTILITY LOCATION INFORMATION FOR EXCAVATION
1-800-892-0123

CONTRACT NO. 72B78

STATE OF ILLINOIS
DEPARTMENT OF TRANSPORTATION
DIVISION OF HIGHWAYS

SUBMITTED Dec 20 2007
[Signature]
DEPUTY DIRECTOR OF HIGHWAYS, REGION ENGINEER

February 1, 2008
Eric E. Harm
ENGINEER OF DESIGN AND ENVIRONMENT

February 1, 2008
Christine M. Reed
DIRECTOR OF HIGHWAYS, CHIEF ENGINEER

**PRINTED BY THE AUTHORITY
OF THE STATE OF ILLINOIS**

PROJECT ENGINEER: JOHN MEGANGARD; (217) 782-6990
SQUAD LEADER: VINCE MADONIA; (217) 785-5046

F.A.P. RTE.	SECTION	COUNTY	TOTAL SHEETS	SHEET NO.
614	(144 BR)I-4	CASS	5	2
STA.		TO STA.		
FED. ROAD DIST. NO. 6 ILLINOIS FED. AID PROJECT				

CONTRACT 72B78

GENERAL NOTES

1. ANY REFERENCE TO THE STANDARDS THROUGHOUT THE PLANS SHALL BE INTERPRETED TO BE THE LATEST STANDARDS OF THE DEPARTMENT AS INCLUDED IN THE PLANS.
2. NO EXCAVATION ANTICIPATED ON THIS PROJECT WHICH WOULD AFFECT UTILITIES. SHOULD ANY EXCAVATION BE REQUIRED, J.U.L.I.E. SHALL BE NOTIFIED A MINIMUM OF 48 HOURS IN ADVANCE - (800) 892-0123.
3. IN ADDITION TO FIELD SURVEYS AND AERIAL SURVEYS, PLAN DIMENSIONS AND DETAILS RELATIVE TO THE EXISTING FACILITIES HAVE BEEN TAKEN FROM EXISTING PLANS AND ARE SUBJECT TO CONSTRUCTION VARIATIONS. IT SHALL BE THE CONTRACTOR'S RESPONSIBILITY TO VERIFY SUCH DIMENSIONS AND DETAILS IN THE FIELD. SUCH VARIATIONS SHALL NOT BE A CAUSE FOR ADDITIONAL COMPENSATION DUE TO A CHANGE IN THE SCOPE OF THE WORK. HOWEVER, THE CONTRACTOR WILL BE PAID FOR THE QUANTITY ACTUALLY FURNISHED AT THE BID PRICE FOR THE WORK.

DISTRICT SIX	
EXAMINED	<u>Dec 12</u> 20 <u>07</u> <i>Louis Hoar</i>
OPERATIONS ENGINEER	
EXAMINED	<u>Dec 10</u> 20 <u>07</u> <i>LRJ</i>
PROGRAM IMPLEMENTATION ENGINEER	
EXAMINED	<u>Dec 12</u> 20 <u>07</u> <i>W.B. J</i>
PROGRAM DEVELOPMENT ENGINEER	

REVISIONS	
NAME	DATE

ILLINOIS DEPARTMENT OF TRANSPORTATION
GENERAL NOTES
 FAP ROUTE 614 (IL 78)
 SECTION (144 BR)I-4
 CASS COUNTY

SCALE: _____ DRAWN BY: _____
 DATE: _____ CHECKED BY: _____

F.A.P. RTE.	SECTION	COUNTY	TOTAL SHEETS	SHEET NO.
614	(144 BR) I-4	CASS	5	3
STA.		TO STA.		
FED. ROAD DIST. NO. 6		ILLINOIS FED. AID PROJECT		

CONTRACT 72B78

SN 009-0005
100% STATE
SFTY-2A

CODE NO.	DESCRIPTION	UNITS	TOTAL	QUANTITY
50500405	FURNISHING AND ERECTING STRUCTURAL STEEL	POUND	123,400	123,400
67100100	MOBILIZATION	L SUM	1	1

REVISIONS	
NAME	DATE

ILLINOIS DEPARTMENT OF TRANSPORTATION

SUMMARY OF QUANTITIES

FAP ROUTE 614 (IL 78)
SECTION (144 BR) I-4
CASS COUNTY

SCALE:
DATE:

DRAWN BY:
CHECKED BY:

Rev.

**Contractor is to verify beam length prior to ordering material. Other sections meeting the section modulus requirements shown may be allowed subject to approval by the Bureau of Bridges and Structures. Maximum Girder depth = 36". No additional payment will be allowed if the contractor chooses a heavier steel section than the one specified in the plans

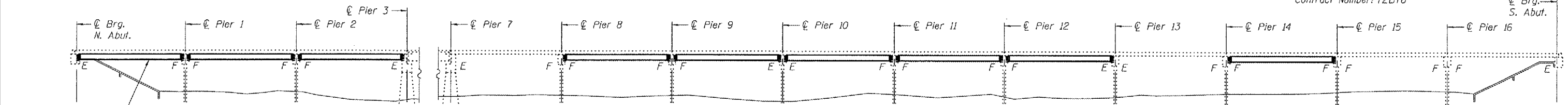
STATE OF ILLINOIS
DEPARTMENT OF TRANSPORTATION

* \varnothing Transverse tie \varnothing 's (3 per span). Place additional shims at midpoints between tie \varnothing 's. Securely weld shims to top flange of support beam. Minimum shim size is 6" x flange width.

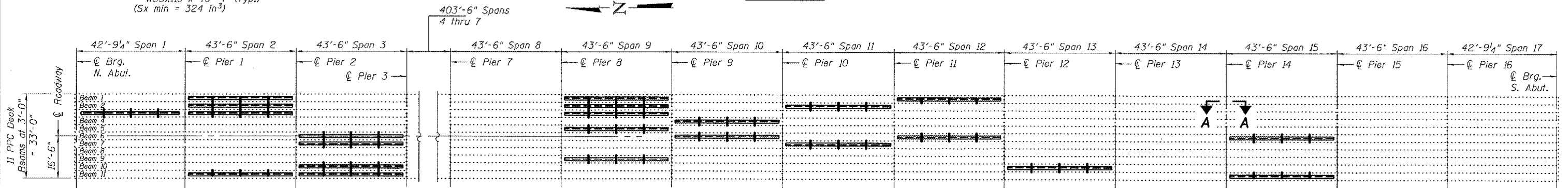
ROUTE NO.	SECTION	COUNTY	SHEETS	SHEET NO.
FAP 614		CASS	5	4
FED. ROAD DIST. NO. 7	PLANNED	FED. AID PROJECT		

SHEET NO. 1
2 SHEETS

Contract Number: 72B78



ELEVATION



PLAN

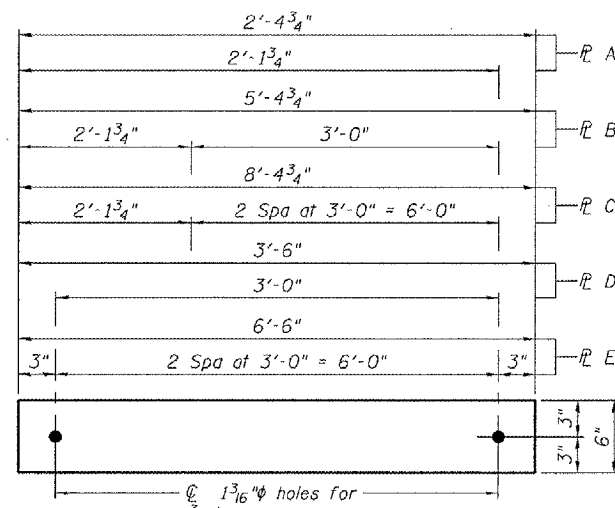
II PPC Deck
Beams at 3'-0"
= 33'-0"
16'-6"

42'-9 1/4" Span 1
43'-6" Span 2
43'-6" Span 3
403'-6" Spans
4 thru 7
43'-6" Span 8
43'-6" Span 9
43'-6" Span 10
43'-6" Span 11
43'-6" Span 12
43'-6" Span 13
43'-6" Span 14
43'-6" Span 15
43'-6" Span 16
42'-9 1/4" Span 17

4 Spaces at
±10'-8 1/4" =
42'-9 1/4" (Typ.
Spans 1 & 17)

4 Spaces at
10'-10 1/2" =
43'-6" (Typ. Spans
2, 3 & 8-16)

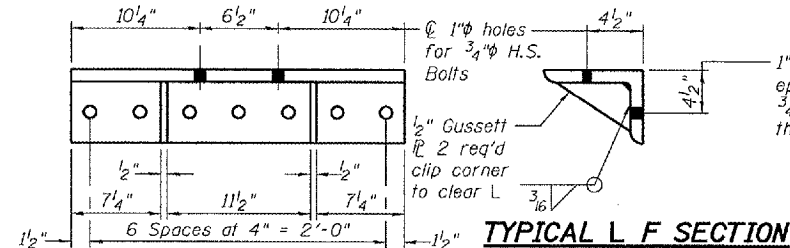
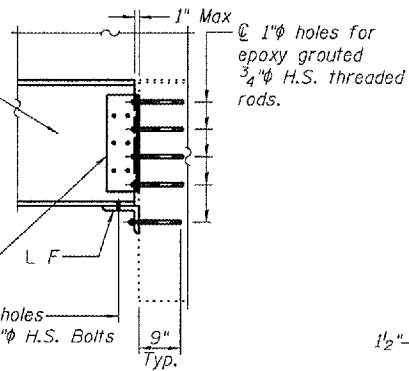
*Transverse
Tie \varnothing Spacing



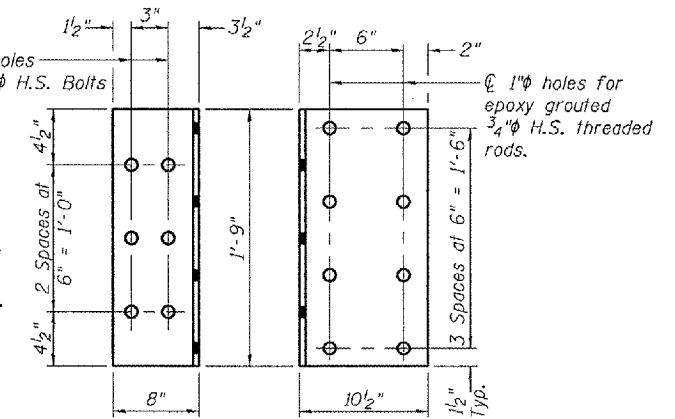
SECTION A-A
TYPICAL CONNECTION DETAIL

W Section see elevation for exact size. Place tight against concrete beam.

Bent \varnothing G shall be centered in web of W Section



L F DETAIL
L F 8x8x3/4 x 2'-3" (46 Req'd)



Bent \varnothing G
 \varnothing 1/2" x 1'-6 1/2" x 1'-9" (92 Req'd)

TRANSVERSE TIE \varnothing 'S

- \varnothing A 1/2" x 2'-4 3/4" x 6" (9 Req'd)
- \varnothing B 1/2" x 5'-4 3/4" x 6" (3 Req'd)
- \varnothing C 1/2" x 8'-4 3/4" x 6" (6 Req'd)
- \varnothing D 1/2" x 3'-6" x 6" (30 Req'd)
- \varnothing E 1/2" x 6'-6" x 6" (13 Req'd)

GENERAL NOTES

All structural steel shall conform to AASHTO Classification M-270 Gr. 36, unless otherwise noted.
Plan dimensions and details relative to existing plans are subject to routine variations. The Contractor shall field verify existing dimensions and details affecting new construction and make necessary approved adjustments prior to construction or ordering of materials. Such variations shall not be cause for additional compensation for a change in scope of the work, however, the Contractor will be paid for the quantity actually furnished based upon the unit price bid for the work.
See Section 584 of the Standard Specifications for Epoxy Grouting of Threaded Rods.
The cost of epoxy grouting threaded rods shall be included with Furnishing and Erecting Structural Steel.

The contractor is advised that the existing PPC Deck Beams are in a deteriorated condition with reduced load carrying capacity. It is the contractor's responsibility to account for the condition of the beams when developing construction procedures.

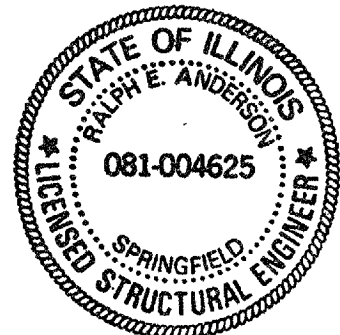
If the contractor's procedure for placement of beams involves placement of cranes or other heavy equipment on the bridge, a detailed procedure shall be submitted to the Engineer for approval. The procedure shall include calculations, prepared and sealed by an Illinois Licensed Structural Engineer, verifying that the equipment and procedure used will not overstress the existing beams. To distribute load to multiple beams and protect the existing surface, in all cases a double layer mat of heavy timbers shall be used at all times under crane tracks or wheels and any outriggers in the down position. If necessary, shims shall be used under the crane mat to ensure uniform contact with the underlying beams.
The Contractor has the option of using used steel. See Special Provisions.

TOTAL BILL OF MATERIAL

ITEM	UNIT	QUANTITY
Furnishing and Erecting Structural Steel	Pound	123,480

DESIGNED	Alicia V. Halligan
CHECKED	[Signature]
DRAWN	[Signature]
CHECKED	ATH AB

EXAMINED	January 9, 2007
PASSED	[Signature]



Expires: November 30, 2008

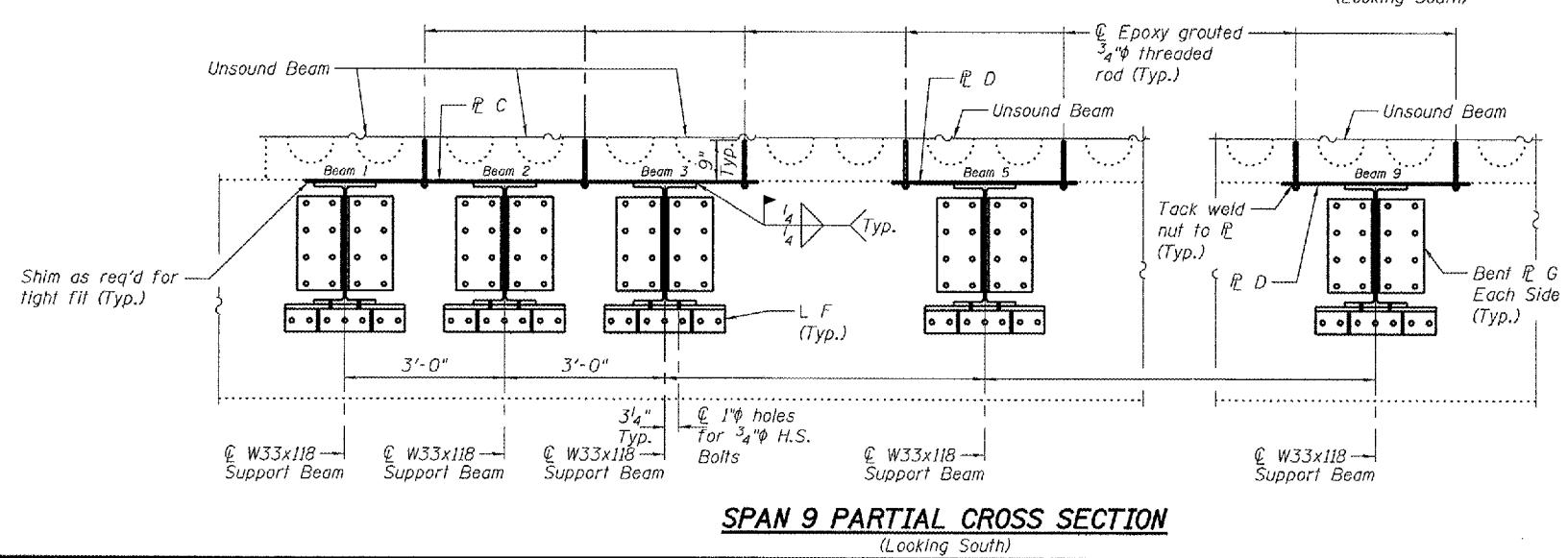
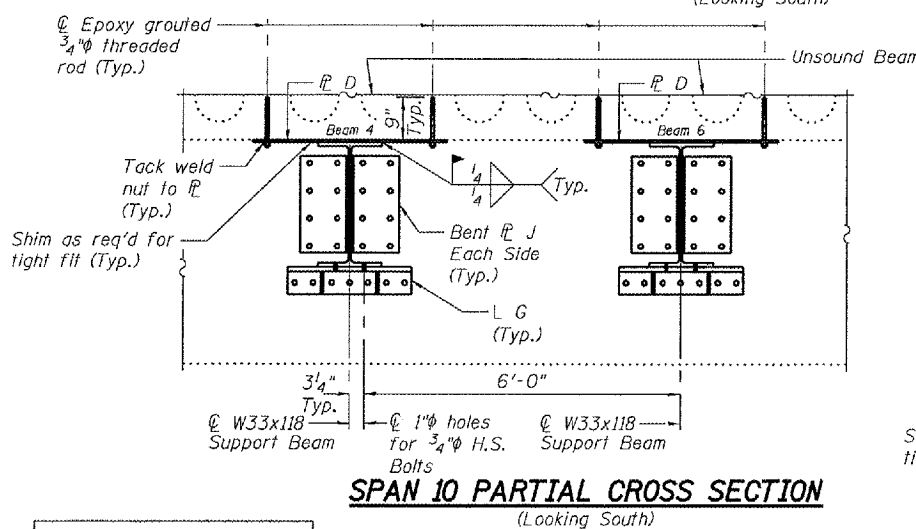
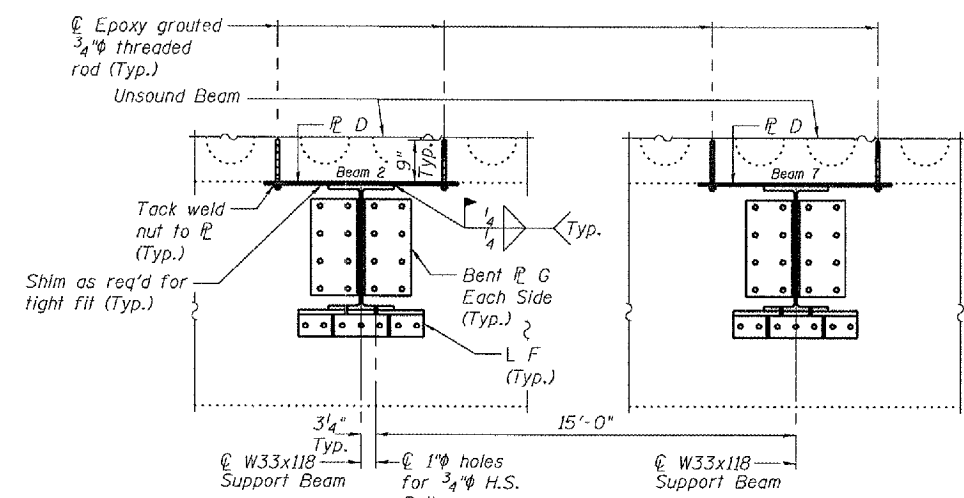
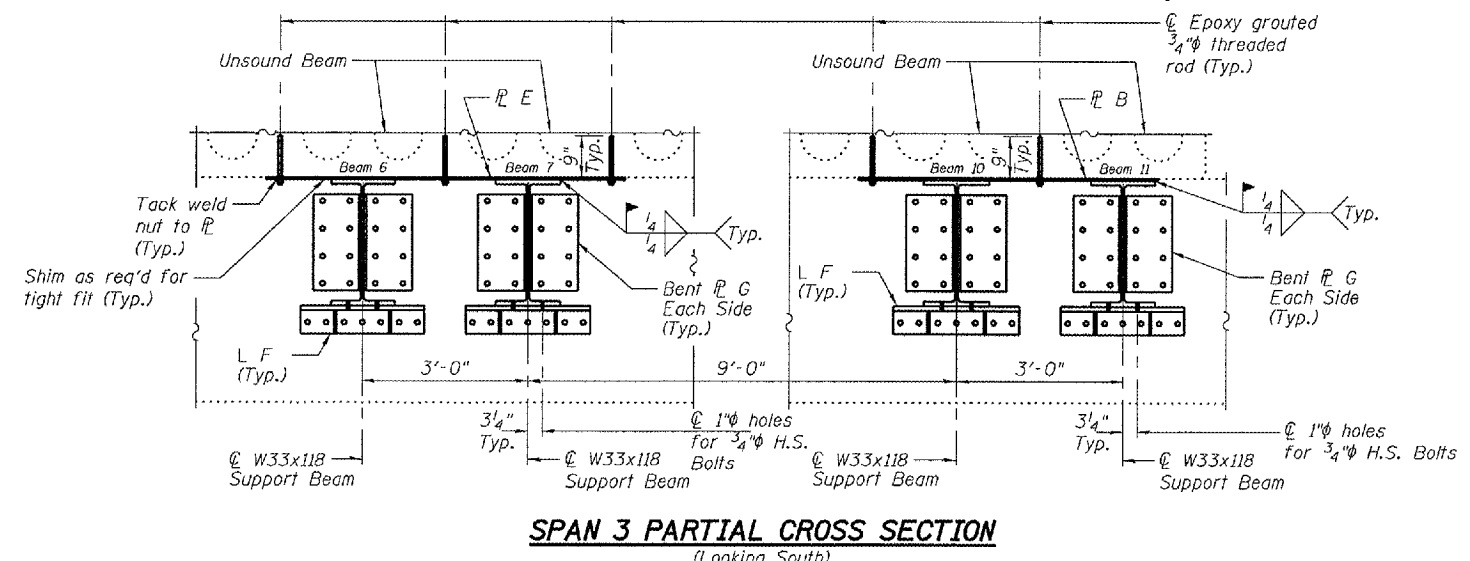
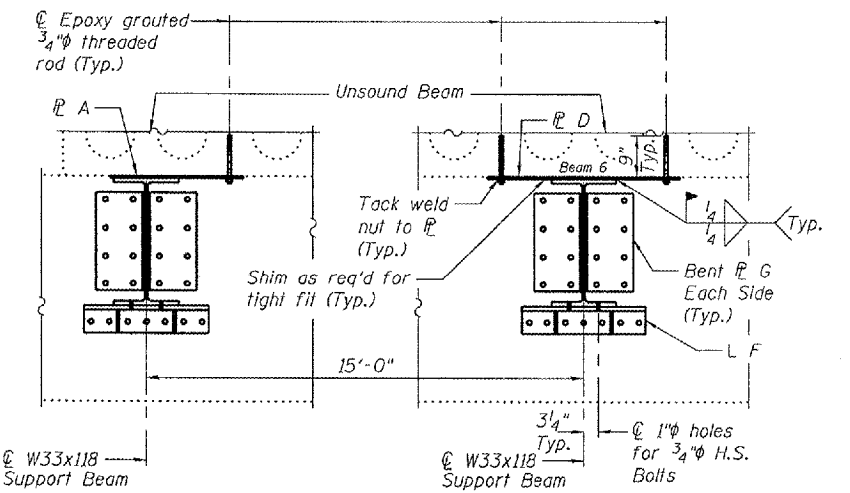
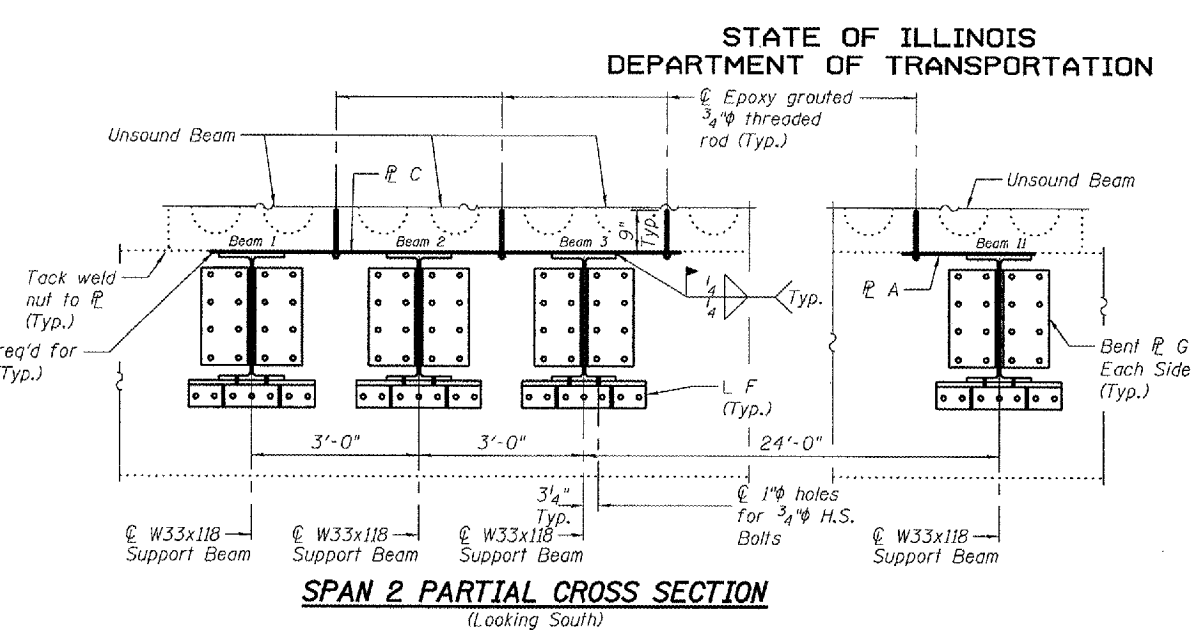
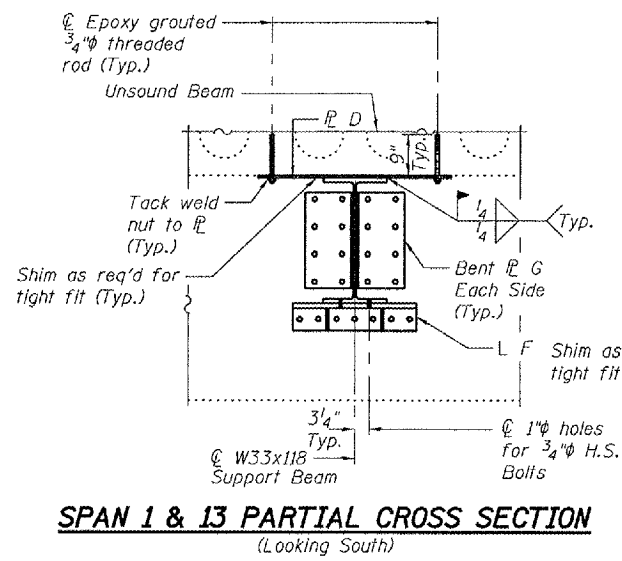
PLAN AND ELEVATION
F.A.P. RT.614
CASS COUNTY
SN 009-0005

STATE OF ILLINOIS
DEPARTMENT OF TRANSPORTATION

ROUTE NO.	SECTION	COUNTY	TOTAL SHEETS	SHEET NO.
FAP 614		Cass	5	5
FED. ROAD DIST. NO. 7	ILLINOIS	FED. AID PROJECT		

SHEET NO. 2
2 SHEETS

Contract Number: 72B78



DESIGNED	A.T.H.
CHECKED	A.J.B.
DRAWN	Drew Christopher
CHECKED	A.T.H. A.J.B.

January 9, 2008
EXAMINED *Carl Perry*
REPAIR PLANS UNIT CHIEF
PASSED *Ralph E. Anderson*
ENGINEER OF BRIDGES AND STRUCTURES

DECK CROSS SECTIONS
F.A.P. RT.614
CASS COUNTY
SN 009-0005