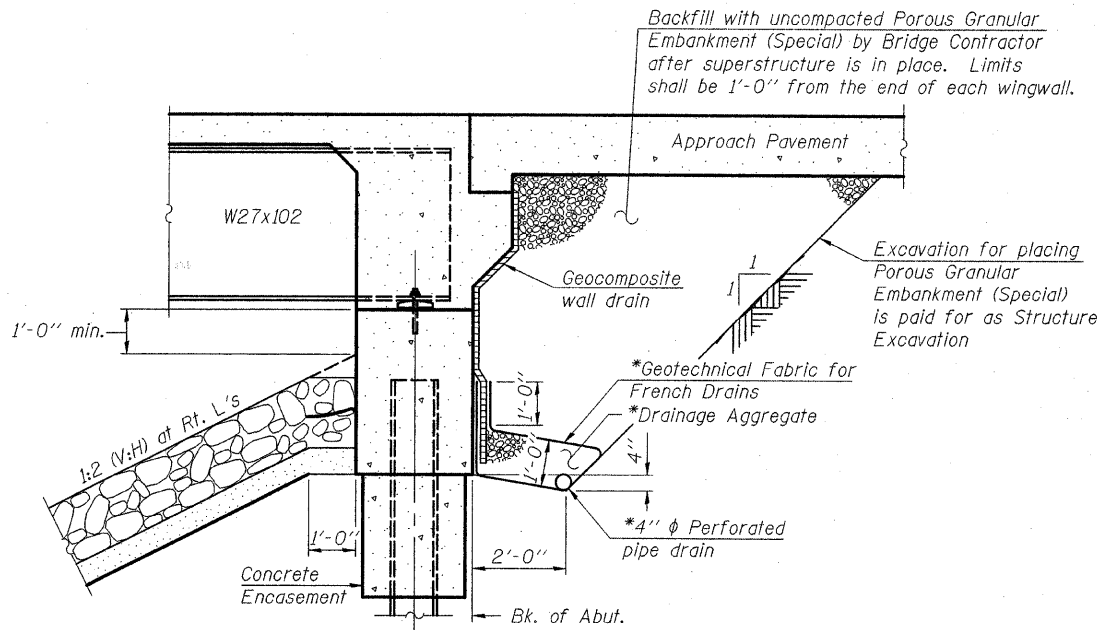


STATE OF ILLINOIS
DEPARTMENT OF TRANSPORTATION

ROUTE NO.	SECTION	COUNTY	TOTAL SHEETS	SHEET NO.
F.A.P. 328	(BBR-2) B-1	WAYNE	140	24
FED. ROAD DIST. NO. 7	ILLINOIS	FED. AID PROJECT		

SHEET NO. 2
25 SHEETS

Contract #74040



SECTION THRU INTEGRAL ABUTMENT
(Horiz. dim. at Rt. L's)

* Included in the cost of Pipe Underdrains for Structures.

Note:

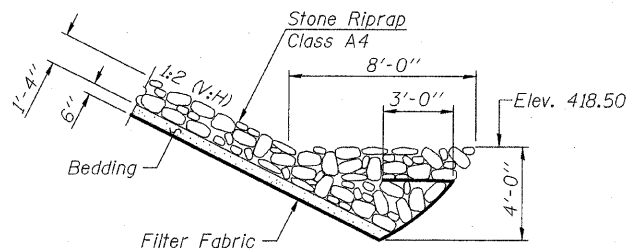
All drainage system components shall extend to 2'-0" from the end of each wingwall except an outlet pipe shall extend until intersecting with the side slopes. The pipes shall drain into concrete headwalls. (See Article 601.05 of the Standard Specifications and Highway Standard 60110).

GENERAL NOTES

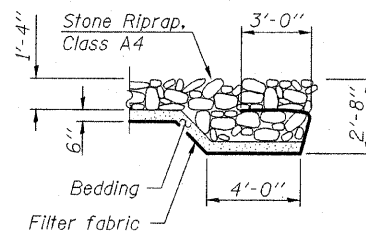
Fasteners shall be AASHTO M164 Type 1, mechanically galvanized bolts.
Bolts $\frac{1}{8}$ in. ϕ , holes $\frac{1}{16}$ in. ϕ , unless otherwise noted.
Calculated Weight of Structural Steel = 103,620 AASHTO M 270 Grade 50.
Calculated Weight of Structural Steel = 9,100 AASHTO M 270 Grade 36.
No field welding is permitted except as specified in the contract documents.
Reinforcement bars shall conform to the requirements of ASTM A706 Gr 60 (IL Modified). See Special Provisions.
Reinforcement bars designated (E) shall be epoxy coated.
Bearing seat surfaces shall be constructed or adjusted to the designated elevations within a tolerance of $\frac{1}{8}$ in. (0.01 ft). Adjustments shall be made either by grinding the surface or by shimming the bearings.
The Inorganic Zinc Rich Primer / Acrylic / Acrylic Paint System shall be used for shop and field painting of new structural steel except where otherwise noted. The color of the final finish coat for all interior steel surfaces shall be grey, Munsell No. 5B 7/1. The color of the final finish coat for the exterior and bottom flange of the fascia beams shall be blue, Munsell No. 10B 3/6. See Special Provision for "Cleaning and Painting New Metal Structures."
Layout of the slope protection system may be varied to suit ground conditions in the field as directed by the Engineer.
The Contractor shall drive test piles to 110% of the nominal required bearing specified in production locations at substructures specified or approved by the Engineer before ordering the remainder of piles.
All cross frames or diaphragms shall be installed as steel is erected and secured with erection pins and bolts except as otherwise noted. Individual cross frames or diaphragms at supports may be temporarily disconnected to install bearing anchor rods.
Load carrying components designated "NTR" shall conform to the Supplemental Requirements for Notch Toughness, Zone 2.
Two $\frac{1}{8}$ in. adjusting shims shall be provided for each bearing in addition to all other plates or shims and placed as shown on bearing details.
The contractor is advised that the existing PPC deck beams are in a deteriorated condition with reduced load carrying capacity. It is the Contractor's responsibility to account for the condition of the beams when developing construction procedures for removal and replacement of the superstructure.
Slipforming of the parapets is not allowed.

TOTAL BILL OF MATERIAL

ITEM	UNIT	SUPER	SUB	TOTAL
Porous Granular Embankment (Special)	Cu. Yd.		85	85
Stone Riprap, Class A4	Sq. Yd.		897	897
Filter Fabric	Sq. Yd.		1174	1174
Removal of Existing Structures	Each			1
Structure Excavation	Cu. Yd.		347	347
Floor Drains	Each	20		20
Concrete Structures	Cu. Yd.		133.8	133.8
Concrete Superstructure	Cu. Yd.	226.9		226.9
Bridge Deck Grooving	Sq. Yd.	676		676
Concrete Encasement	Cu. Yd.		12.6	12.6
Protective Coat	Sq. Yd.	846		846
Furnishing and Erecting Structural Steel	L Sum	0.58		0.58
Stud Shear Connectors	Each	3,294		3,294
Reinforcement Bars, Epoxy Coated	Pound	57,780	13,660	71,440
Bar Splacers	Each	656	76	732
Furnishing Steel Piles HP12x63	Foot		1088	1088
Driving Piles	Foot		1088	1088
Test Pile Steel HP12x63	Each		2	2
Pile Shoes	Each		36	36
Name Plates	Each	1		1
Anchor Bolts, 1"	Each	48		48
Geocomposite Wall Drain	Sq. Yd.		62	62
Pipe Underdrains for Structures (4")	Foot		121	121
Mechanical Splice	Each		48	48
Temporary Soil Retention System	Sq. Ft.		435	435
Underwater Structure Excavation Protection, Location 1	Each		1	1
Underwater Structure Excavation Protection, Location 2	Each		1	1
Asbestos Bearing Pad Removal	Each	22		22



SECTION A-A



SECTION B-B

DESIGNED	SJB
CHECKED	EML
DRAWN	KLH
CHECKED	EML

HORNER & SHIFRIN, INC.
ENGINEERS

GENERAL NOTES AND DETAILS
F.A.P. ROUTE 328 - SECTION (BBR-2)B-1
WAYNE COUNTY
STATION 888+60.00
STRUCTURE NO. 096-0067