

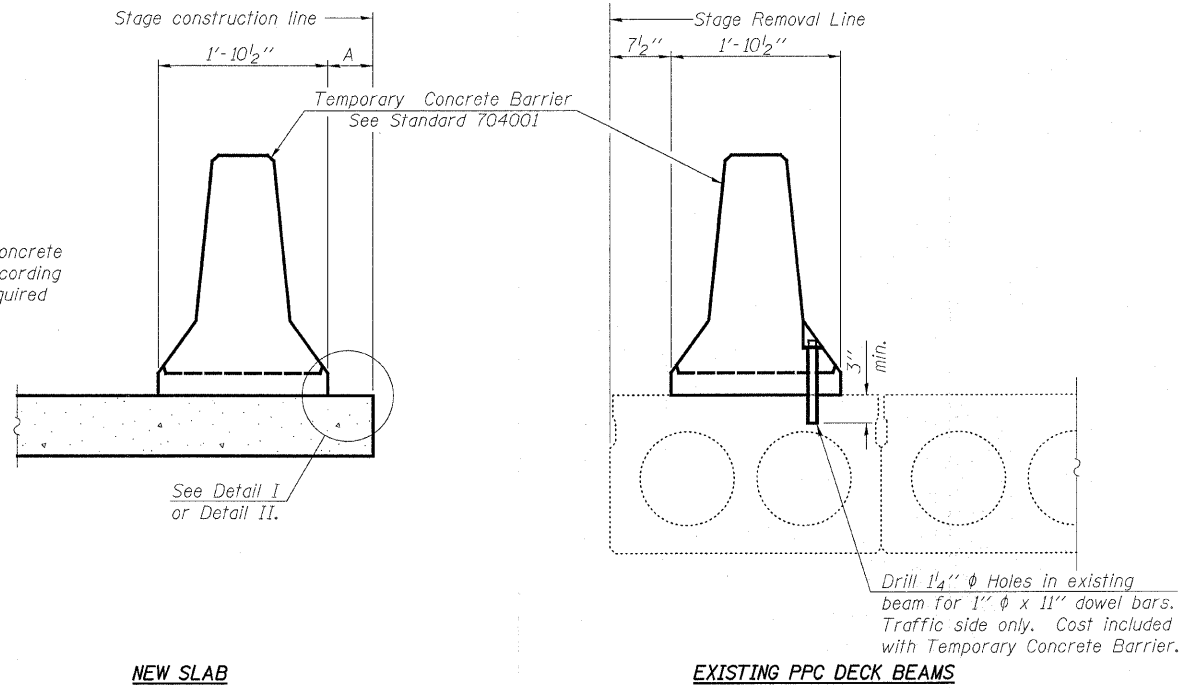
STATE OF ILLINOIS  
DEPARTMENT OF TRANSPORTATION

ROUTE NO.	SECTION	COUNTY	TOTAL SHEETS	SHEET NO.
F.A.P. 328	(8BR-2) B-1	WAYNE	140	27
FED. ROAD DIST. NO. 7	ILLINOIS	FED. AID PROJECT-		

SHEET NO. 5  
25 SHEETS

Contract #74040

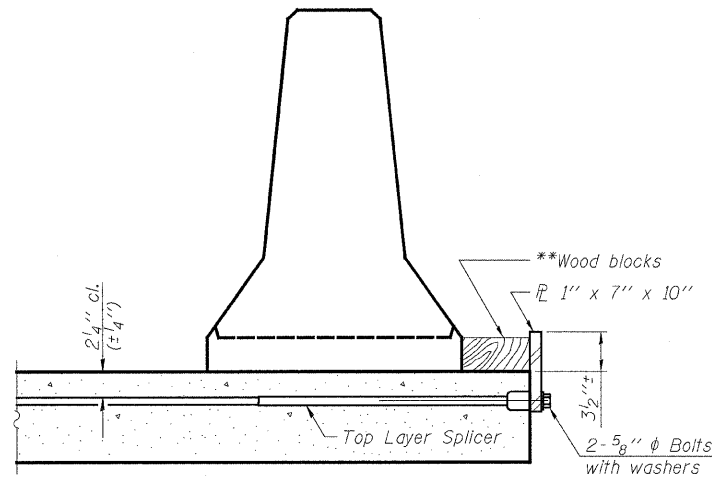
When "A" is 3'-6" or less, the temporary concrete barrier shall be anchored to the new slab according to Detail I or Detail II. No anchorage is required when "A" is greater than 3'-6".



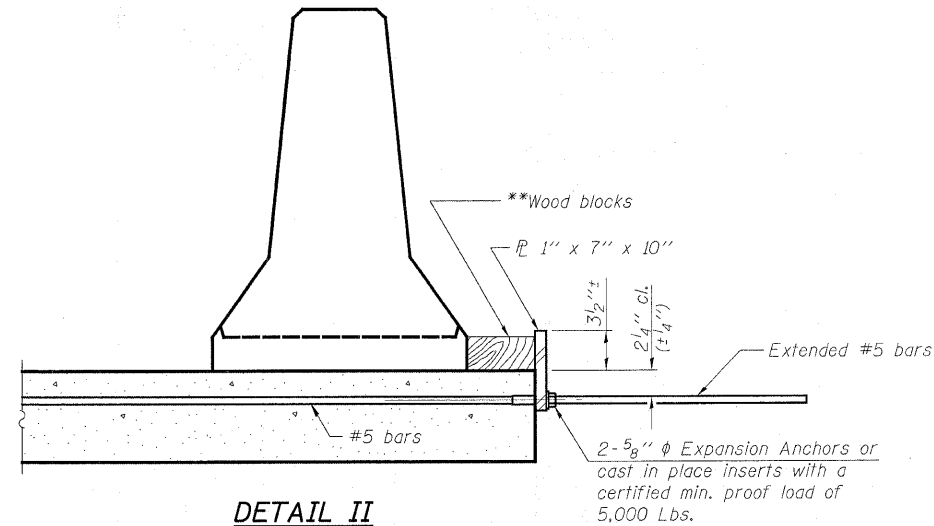
NEW SLAB

EXISTING PPC DECK BEAMS

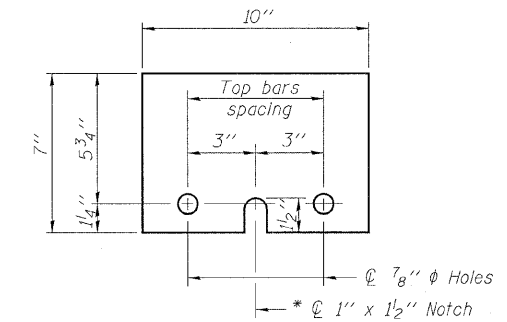
SECTIONS THRU SLAB



DETAIL I



DETAIL II



STEEL RETAINER 1" x 7" x 10"

\* Required only with Detail II

\*\* Wood blocks may be omitted when required to provide minimum stage traffic lane width. When the wood blocks are omitted, the concrete barrier shall be in direct contact with the steel retainer plate.

DESIGNED	KLH
CHECKED	EML
DRAWN	KLH
CHECKED	EML

TEMPORARY CONCRETE BARRIER  
FOR STAGE CONSTRUCTION  
F.A.P. ROUTE 328 - SECTION (8BR-2)B-1  
WAYNE COUNTY  
STATION 888+60.00  
STRUCTURE NO. 096-0067

HORNER &  
SHIFRIN, INC.  
ENGINEERS