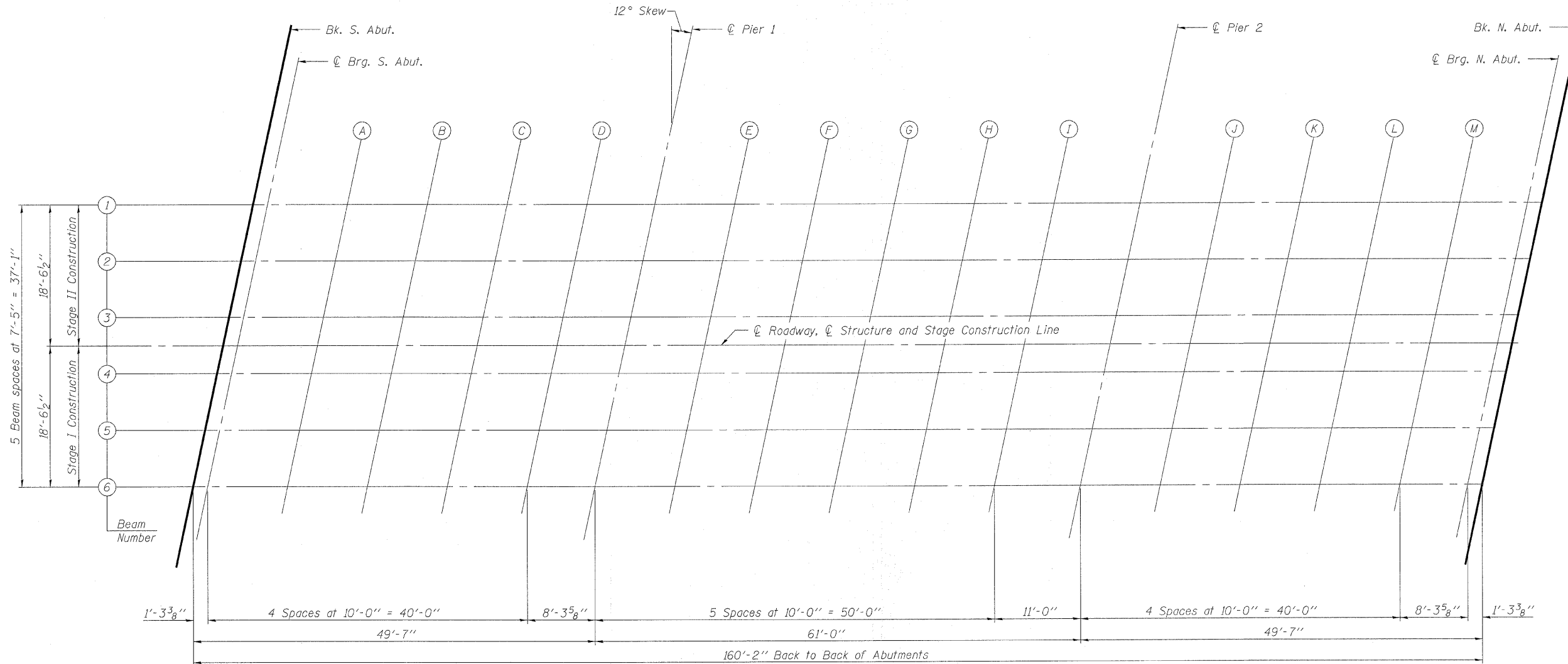
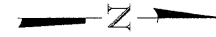


STATE OF ILLINOIS  
DEPARTMENT OF TRANSPORTATION

ROUTE NO. 328	SECTION (8BR-2) B-1	COUNTY WAYNE	TOTAL SHEETS 140	SHEET NO. 28	SHEET NO. 6 25 SHEETS
FED. ROAD DIST. NO. 7		ILLINOIS	FED. AID PROJECT		

Contract #74040



PLAN

DESIGNED	EML
CHECKED	KLH
DRAWN	KLH
CHECKED	EML

**HORNER &  
SHIFRIN, INC.**  
ENGINEERS

TOP OF SLAB ELEVATIONS  
F.A.P. ROUTE 328 - SECTION (8BR-2)B-1  
WAYNE COUNTY  
STATION 888+60.00  
STRUCTURE NO. 096-0067