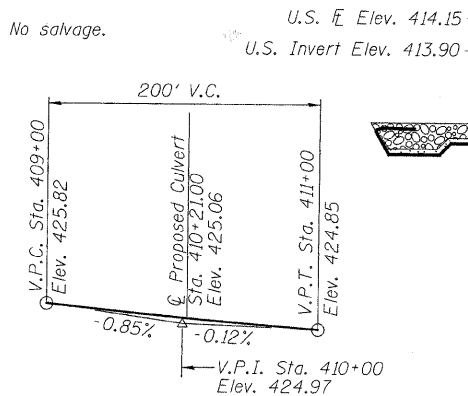


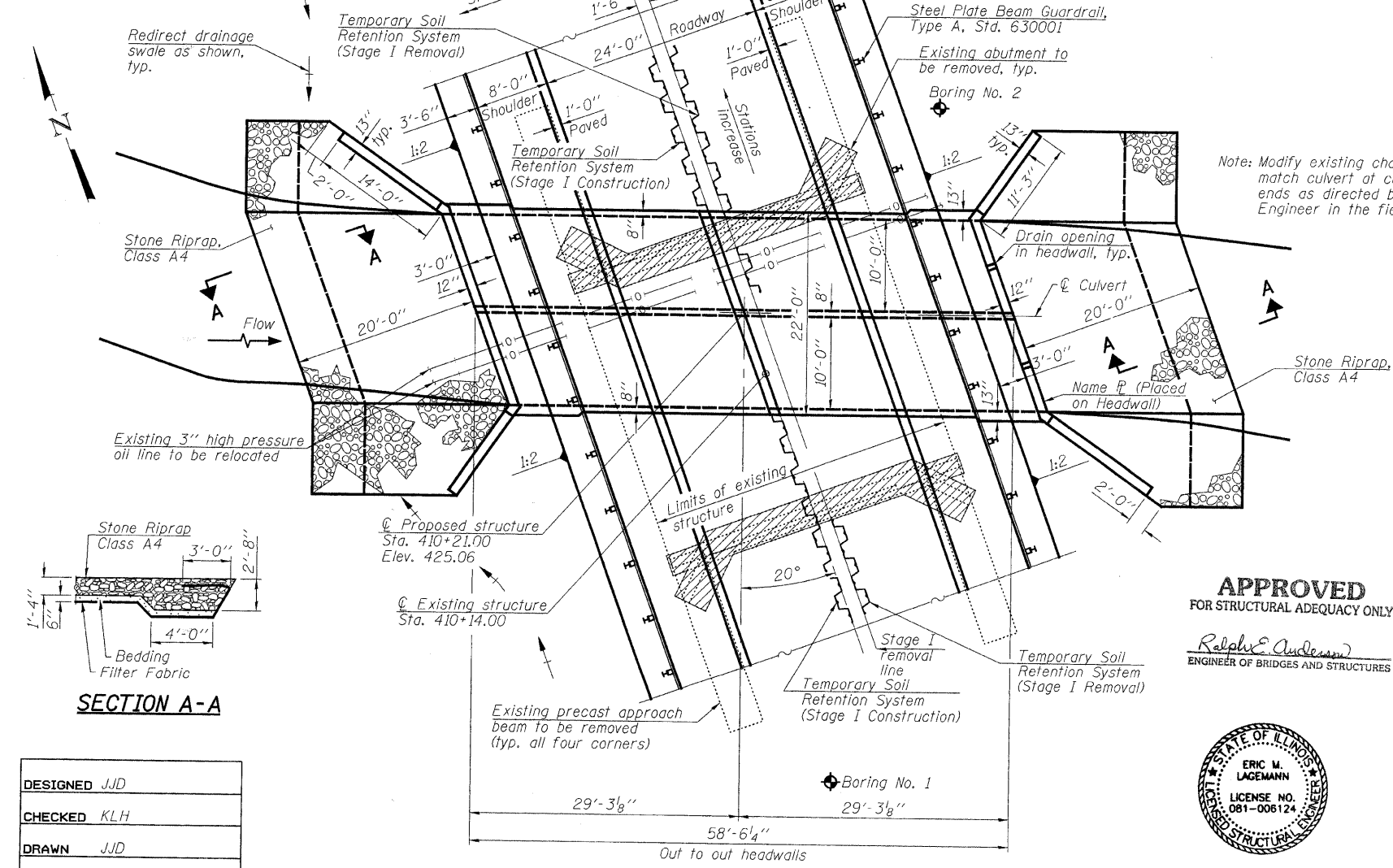
Bench Mark: Chiseled square on NW corner of SN 096-0022. Elev. 424.24

Existing Structure: SN 096-0022 was built in 1923 with reconstruction in 1974. It is a single span structure consisting of 17" PPC deck beams on closed abutments and wingwalls on spread footings. The deck width is 33'-0" and the length is 32'-0" back to back of abutments. Traffic shall be maintained utilizing stage construction.

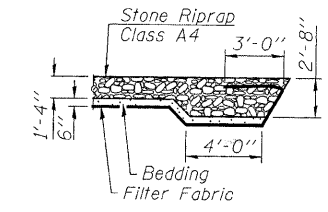
No salvage.



PROFILE GRADE
Along \odot Roadway



LONGITUDINAL SECTION
(Looking North)
(Horizontal dimensions at right angle to \odot F.A.P. 328)



SECTION A-A

DESIGNED	JJD
CHECKED	KLH
DRAWN	JJD
CHECKED	NUM

STATE OF ILLINOIS
DEPARTMENT OF TRANSPORTATION

INDEX OF SHEETS

1. General Plan
2. Temporary Soil Retention System
3. Stage Construction Details
4. Temporary Concrete Barrier
5. Culvert Plan
6. Culvert Elevations and Details
7. Bar Splicers
8. Boring Logs
9. Pre-Stage I Details I
10. Pre-Stage I Details II

ROUTE NO.	SECTION	COUNTY	SHEETS	SHEET NO.
F.A.P. 328	10BR-3 B-1	WAYNE	TOTAL SHEETS 140	69

SHEET NO. 1
10 SHEETS

Contract #74040

GENERAL NOTES

Reinforcement bars shall conform to the requirements of ASTM A 706 Gr 60 (IL Modified). See Special Provisions.
For backfilling and embankment see the Standard Specifications.
All construction joints shall be bonded.
Exposed edges shall be beveled $\frac{3}{4}$ inch.
A precast culvert alternate is not allowed.
Layout of the slope protection system may be varied to suit ground conditions in the field as directed by the Engineer.
Remove two feet of soil beneath the footprint of the box culvert and extend two feet beyond the perimeter of the culvert. Replace with Porous Granular Embankment.

WATERWAY INFORMATION

Drainage Area = 1.9 Sq. Mi.		Exist. Low Grade Elev. = 424.50 Ft. @ Sta. 414+00					
		Prop. Low Grade Elev. = 424.50 Ft. @ Sta. 414+00					
Flood	Freq. Yr.	Q C.F.S.	Opening-Sq. Ft.	Nat. Head-Ft.	Prop. Head-Ft.	Exist. Headwater E.	Prop. Headwater E.
Design	10	518	113	153	421.5	0.6	0.3
Base	50	799	134	160	422.2	1.2	0.8
Overtopping	100	917	140	160	422.4	1.2	1.0
Max. Calc.	500	1199	153	-	422.9	1.7	-
						1.5	424.4

STATION 410+21.00
BUILT 200 BY
STATE OF ILLINOIS
FAP RT 328 - SEC (10BR-3)B-1
LOADING HS20
STR. NO. 096-2010

NAME PLATE

See Std. 515001

Design Scour	Upstream	Downstream
Elevation	410.9	410.7

TOTAL BILL OF MATERIAL

ITEM	UNIT	TOTAL
Removal and Disposal of Unsuitable Material	Cu. Yd.	110
Porous Granular Embankment	Cu. Yd.	110
Stone Riprap, Class A4	Sq. Yd.	167
Filter Fabric	Sq. Yd.	217
Hot Mix Asphalt Surface Course, Mix "C", N70	Ton	7
Removal of Existing Structures	Each	1
Concrete Superstructure	Cu. Yd.	0.1
Reinforcement Bars	Pound	32,680
Bar Splicers	Each	106
Name Plates	Each	1
Concrete Box Culverts	Cu. Yd.	148.6
Removal of Existing P.P.C. Deck Beams	Sq. Ft.	99
Temporary Soil Retention System	Sq. Ft.	649
P.P.C. Deck Beam (17" Depth) Special	Sq. Ft.	97

LOADING HS20-44
Allow 50 psf for future wearing surface.

DESIGN SPECIFICATIONS
2002 AASHTO

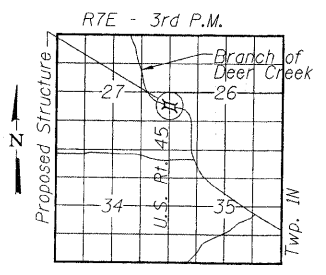
DESIGN STRESSES

FIELD UNITS
 $f_c = 3,500$ psi (Concrete)
 $f_y = 60,000$ psi (reinforcement)

APPROVED
FOR STRUCTURAL ADEQUACY ONLY
Ralph E. Anderson
ENGINEER OF BRIDGES AND STRUCTURES



Eric Lagemann 9/12/07
Expires 11/30/2008



LOCATION SKETCH

HORNER & SHIFRIN, INC.
ENGINEERS

GENERAL PLAN
US ROUTE 45 OVER
BRANCH OF DEER CREEK
F.A.P. ROUTE 328 - SECTION (10BR-3)B-1
WAYNE COUNTY
STATION 410+21.00
STRUCTURE NO. 096-2010