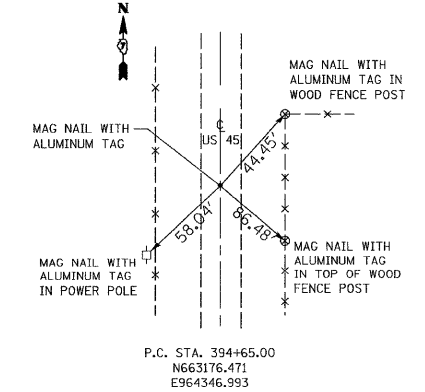
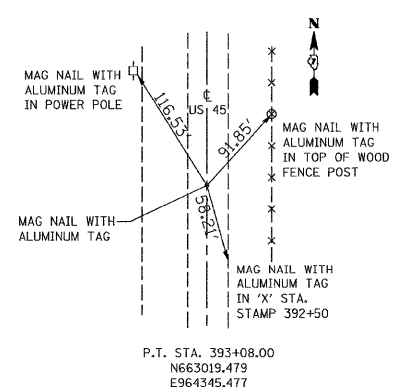
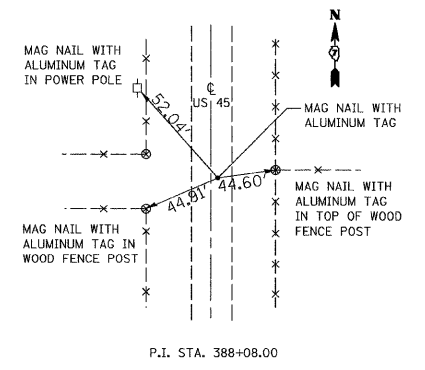
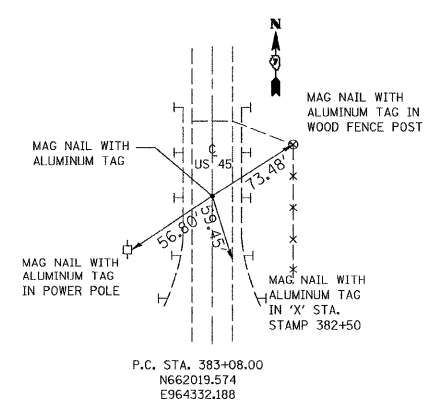
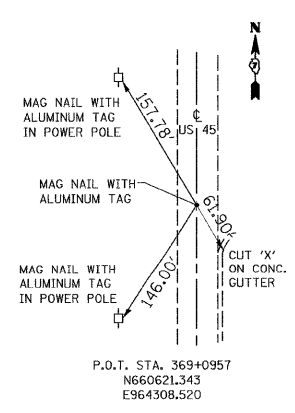
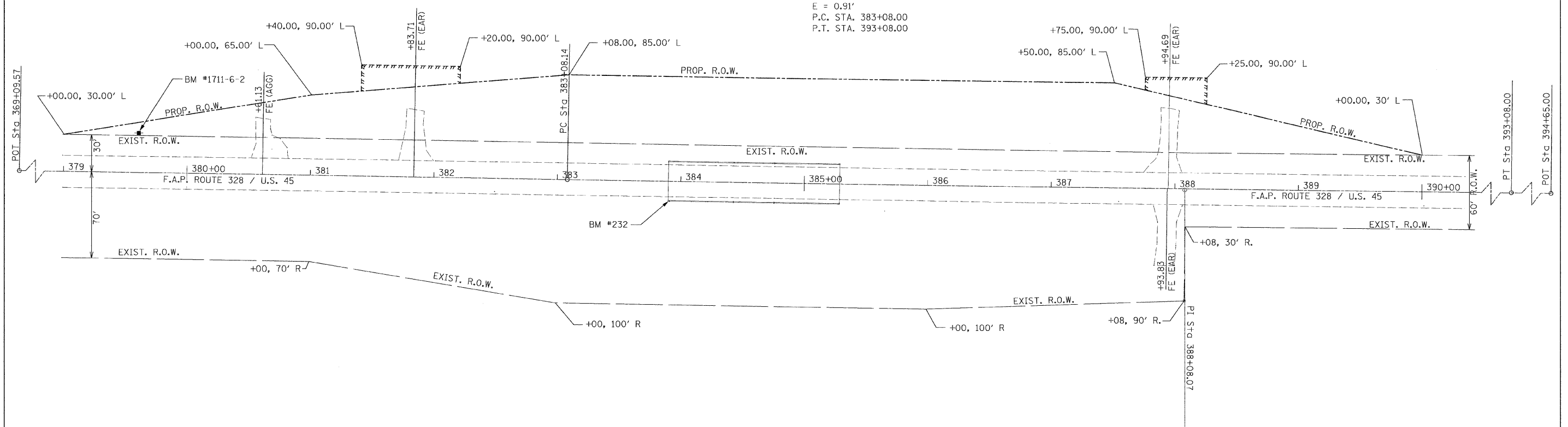


CURVE DATA

P.I. STA. 388+08.00
 D = 0°02' 30"
 R = 137,509.26'
 L = 1000'
 T = 500'
 E = 0.91'
 P.C. STA. 383+08.00
 P.T. STA. 393+08.00



BENCHMARKS

BM #232 ELEV. 423.23
 CHISELED SQUARE ON THE SOUTHEAST CORNER OF BRIDGE #96-0023.

BM #230 ELEV. 424.24
 CHISELED SQUARE ON THE NORTHWEST CORNER OF BRIDGE #96-0022.

BM #1711-6-2 ELEV. 422.61
 YELLOW BENCH MARK SPIKE ON POWER POLE WEST SIDE OF U.S. ROUTE 45 SOUTH OF BRIDGE #96-0023 AT STAT 379+60, 38'± LEFT.

FILE NAME - #FILE#	USER NAME = #USER#	DESIGNED -	REVISED -	STATE OF ILLINOIS DEPARTMENT OF TRANSPORTATION	ALIGNMENT, TIES AND BENCHMARKS	F.A.P. RTE. 328	SECTION (10BR-2)B-1	COUNTY WAYNE	TOTAL SHEETS 140	SHEET NO. 89	
	PLOT SCALE = #SCALE#	DRAWN -	REVISED -			SCALE:	SHEET NO. OF SHEETS	STA. 380+00	TO STA. 389+00	CONTRACT NO. 74040	
	PLDI DATE = #DATE#	CHECKED -	REVISED -			FED. ROAD DIST. NO. ILLINOIS FED. AID PROJECT					
		DATE -	REVISED -								