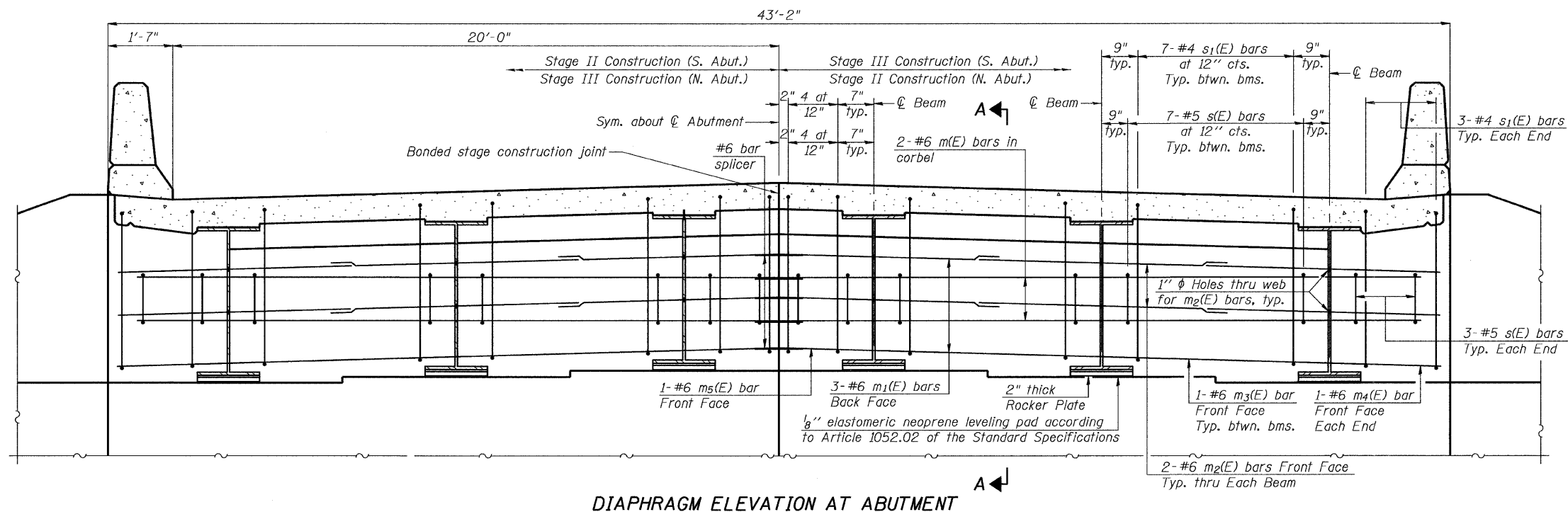


STATE OF ILLINOIS  
DEPARTMENT OF TRANSPORTATION

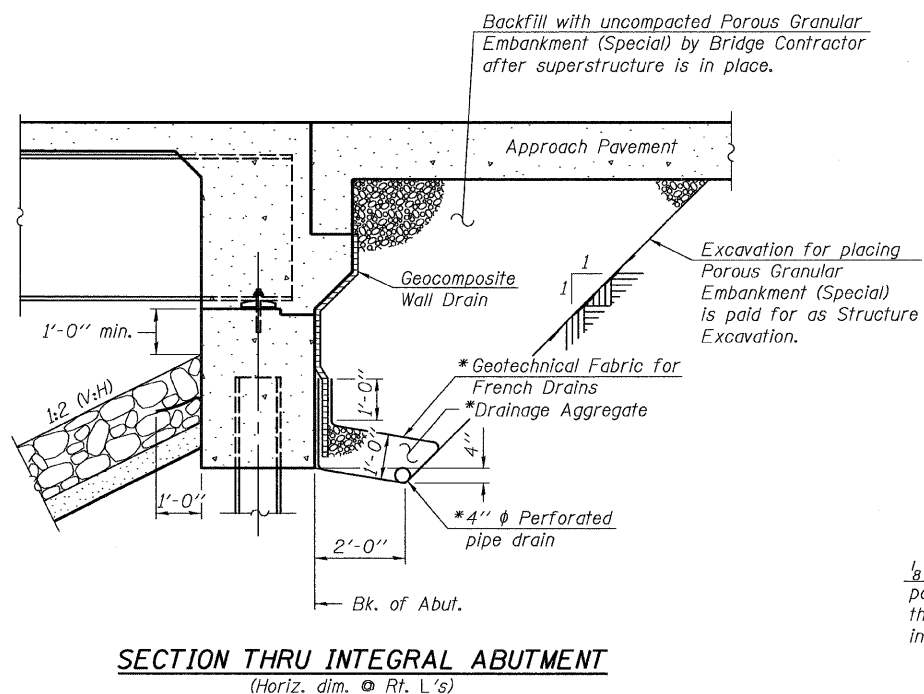
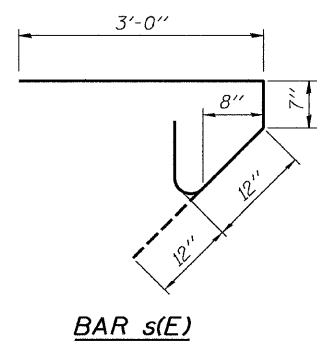
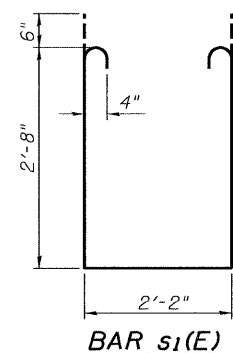
ROUTE NO. FAP 328	SECTION (10BR- 2)B-1	COUNTY WAYNE	TOTAL SHEETS 111	SHEET NO. 111	SHEET NO. 12 21 SHEETS
FED. ROAD DIST. NO. 7		ILLINOIS	FED. AID PROJECT		

Contract # 74040



**NOTES**

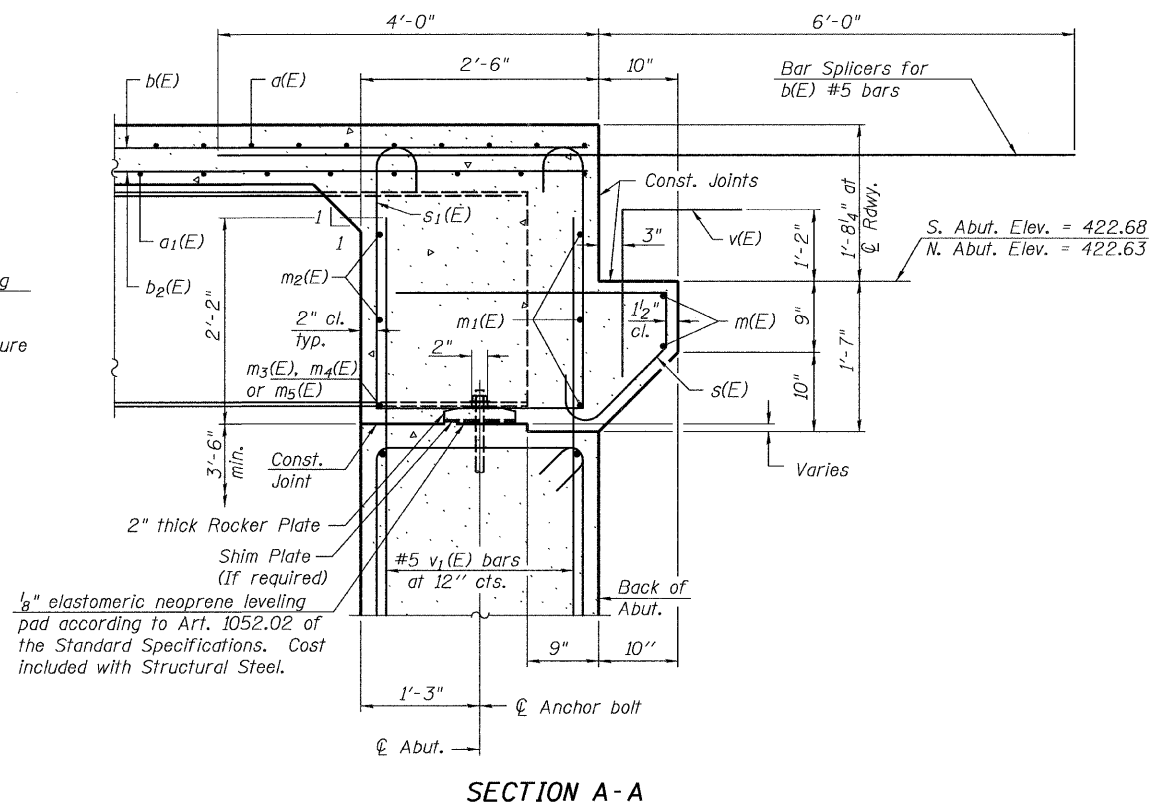
1. Reinforcement bars in diaphragm are billed with superstructure on sheet 11 of 21.
2. Concrete in diaphragm is included with Concrete Superstructure on sheet 11 of 21.
3. The s(E) and s<sub>1</sub>(E) bars shall be placed parallel to the beams. Spacing for these bars shall be at right angles to the beams.
4. For Bar Splicer Details see Sheet 19 of 21.



\* Included in the cost of Pipe Underdrains for Structures.

Note:  
All drainage system components shall extend to 2'-0" from the end of each wingwall except an outlet pipe shall extend until intersecting with the side slopes. The pipes shall drain into concrete headwalls. (See Article 601.05 of the Standard Specifications and Highway Standard 601101).

**MIN. BAR LAP**  
#6 bar = 2'-9"



BENTON & ASSOCIATES, INC.

DESIGNED - MBH
CHECKED - NRF
DRAWN - MBH
CHECKED - NRF

SI-DS2

11-1-06

**SUPERSTRUCTURE DETAILS**  
**US 45 / DEER CREEK**  
**F.A.P. RT. 328**  
**WAYNE COUNTY**  
**SN. 096-0068**