

GENERAL NOTES

Reinforcement bars shall conform to the requirements of ASTM A 706 Gr 60 (IL Modified). See Special Provisions.

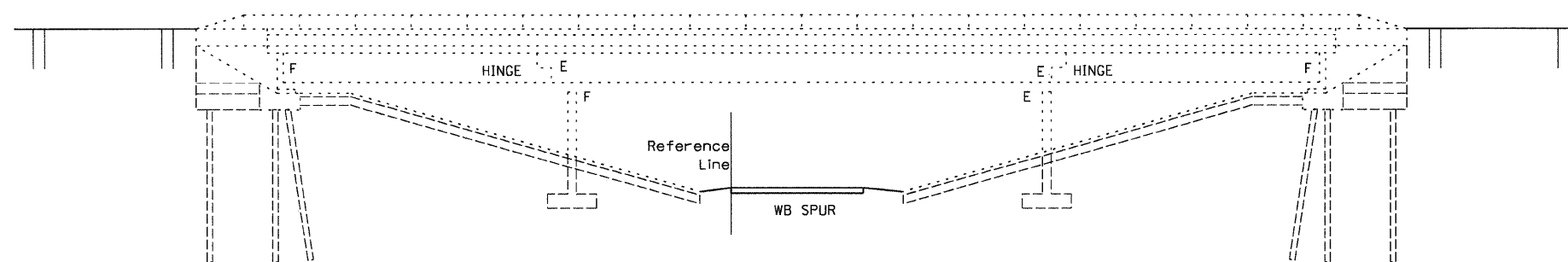
Reinforcement bars designated (E) shall be epoxy coated.

Plan dimensions and details relative to existing plans are subject to routine variations. The Contractor shall field verify existing dimensions and details affecting new construction and make necessary approved adjustments prior to construction or ordering of materials. Such variations shall not be cause for additional compensations for a change in scope of the work; however, the Contractor will be paid for the quantity actually furnished based upon the unit price bid for the work.

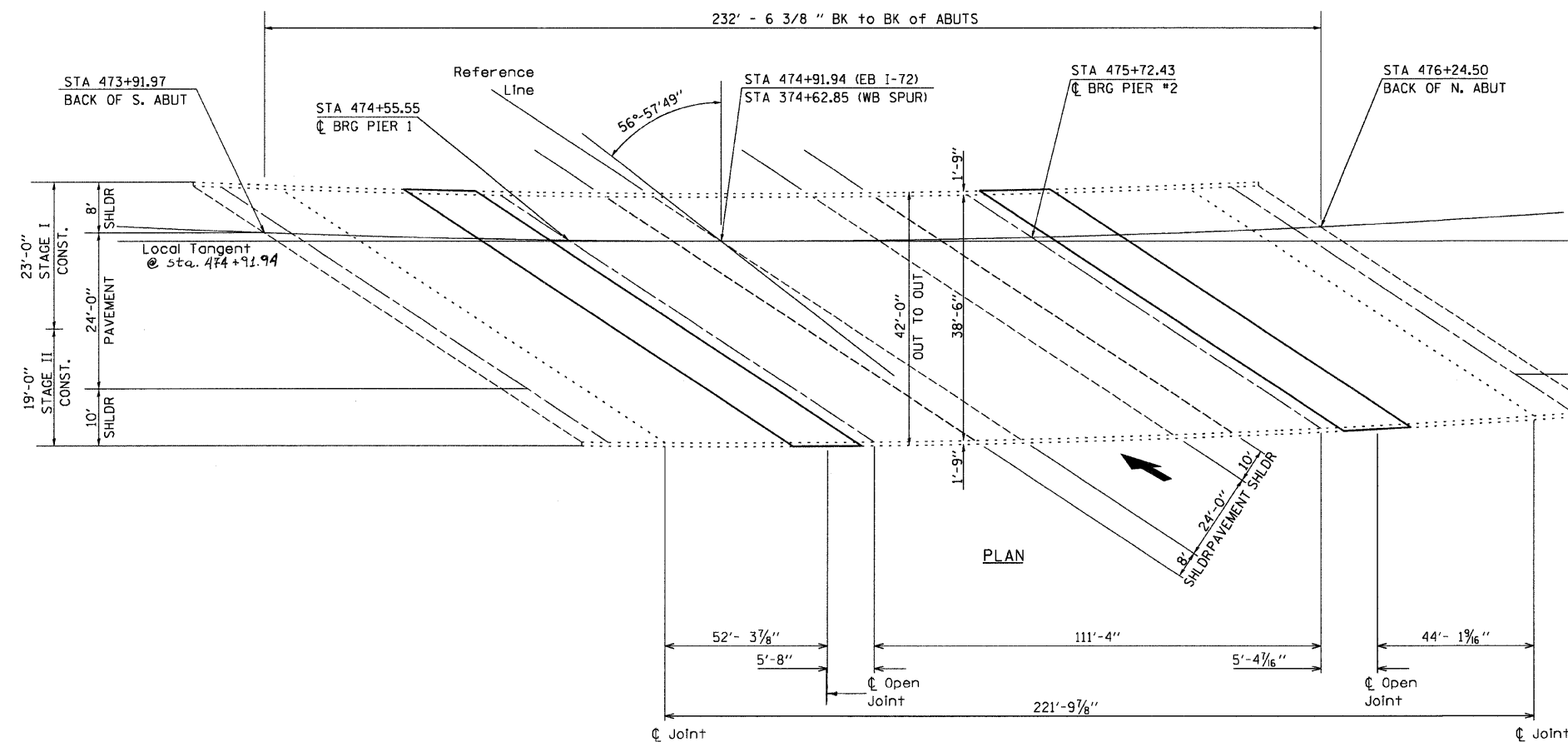
Existing reinforcement bars extending into the removal area shall be cleaned, straightened and incorporated into the new construction. Any reinforcement bars that are damaged during concrete removal operations shall be repaired or replaced using an approved bar splicer or anchorage system. Cost included in concrete removal).

Joint openings shall be adjusted according to Article 520.04 of the Standard Specifications when the deck is poured at an ambient temperature other than 50 F.

Prior to pouring the new concrete deck, all heavy or loose rust, loose mill scale, or other loose potentially detrimental foreign material shall be removed from the surfaces in contact with concrete. Tightly adhered paint may remain unless otherwise noted. Removal shall be accomplished by methods that will not damage the steel and the cost will be included in the pay item covering removal of the existing concrete.



ELEVATION



PLAN

TOTAL BILL OF MATERIALS

ITEM DESCRIPTION	UNIT	QUANTITY
Concrete Removal	CU YD	24.6
Concrete Superstructure	CU YD	24.6
Preformed Joint Strip Seal	FOOT	154
Reinforcement Bars, Epoxy Coated	POUND	3500
Bar Splicers	EACH	28
Structural Repair of Concrete (Depth <= 5")	SQ FT	46