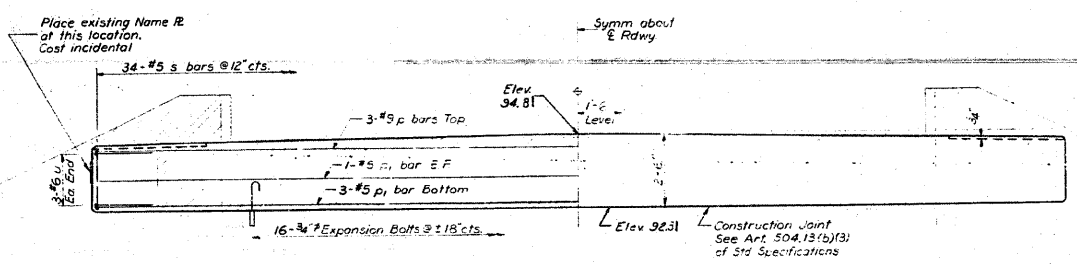
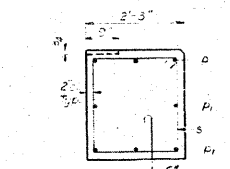


STATE OF ILLINOIS
DEPARTMENT OF PUBLIC WORKS & BUILDINGS
DIVISION OF HIGHWAYS

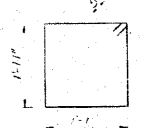
PROJECT NO.	SECTION	COUNTY	SHEET NO.	TOTAL SHEETS
16	5BR-2	WASHINGTON	20	11
SHEET NO. 5 G SHEETS				



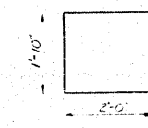
ELEVATION



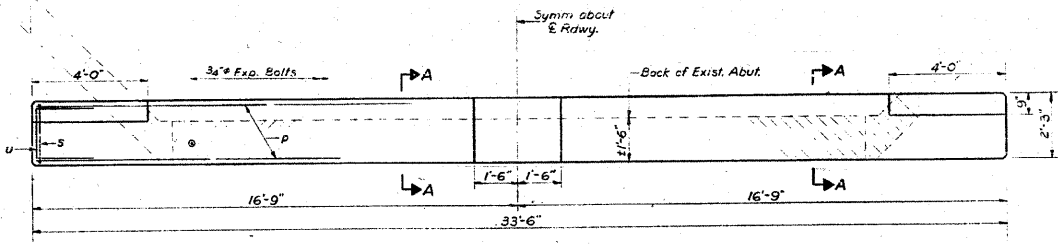
SECTION A-A



BAR S



BAR U



PLAN

TWO ABUTS.
BILL OF MATERIAL

Bar	No.	Size	Length	Space
P	6	#9	23'-3"	
S	10	#5	23'-0"	
S	63	#5	2'-0"	1'
U	12	#6	5'-10"	1'
Class X Concrete		Cu. Yds.	18.5	
Reinforcement Bars		Lbs.	17,000	
Expansion Bolts		Each	32	
Concrete Removal		Cu. Yds.	9	

DESIGNED: J. J. ...
CHECKED: J. J. ...
DRAWN: J. J. ...
CHECKED: J. J. ...

EXAMINED: J. J. ...
PASSED: J. J. ...

DATE: July 26, 2011

NOTE:
Hatched area indicates Concrete Removal. Reinforcement extending into removal area shall be cleared and incorporated into the new construction.
Expansion bolts shall be anchored in sound concrete.
All edges shall have standard 3/8" chamfers except as noted.

ABUTMENTS
F.A.R.T. 16 SEC. 5-BR-1
WASHINGTON COUNTY
STA. 1433+10

FOR INFORMATION ONLY

REVISIONS	
NAME	DATE

ILLINOIS DEPARTMENT OF TRANSPORTATION
EXISTING STRUCTURE PLANS

FAS ROUTE 1832
SECTION 5BR-2
WASHINGTON COUNTY

SCALE: VERT. DATE
HORIZ. DRAWN BY
CHECKED BY

S.N. 095-0077