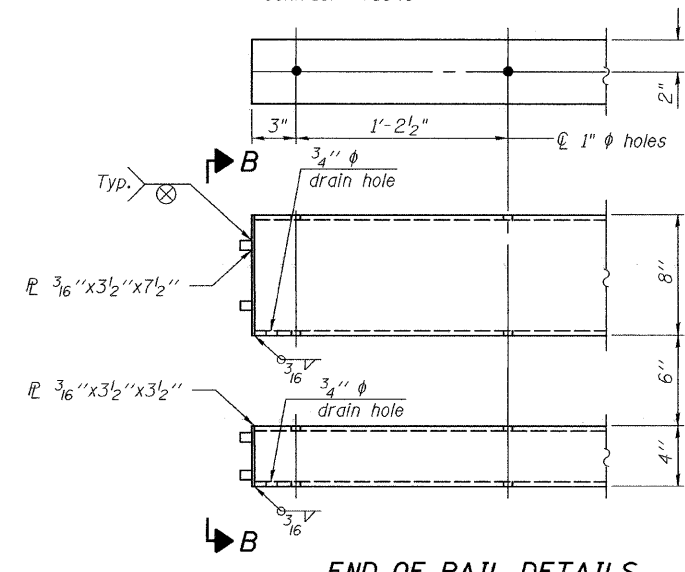
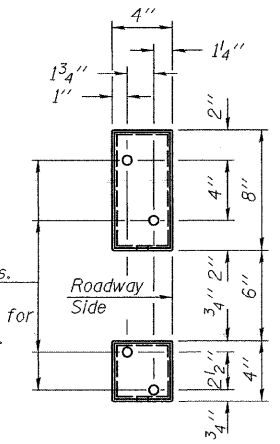
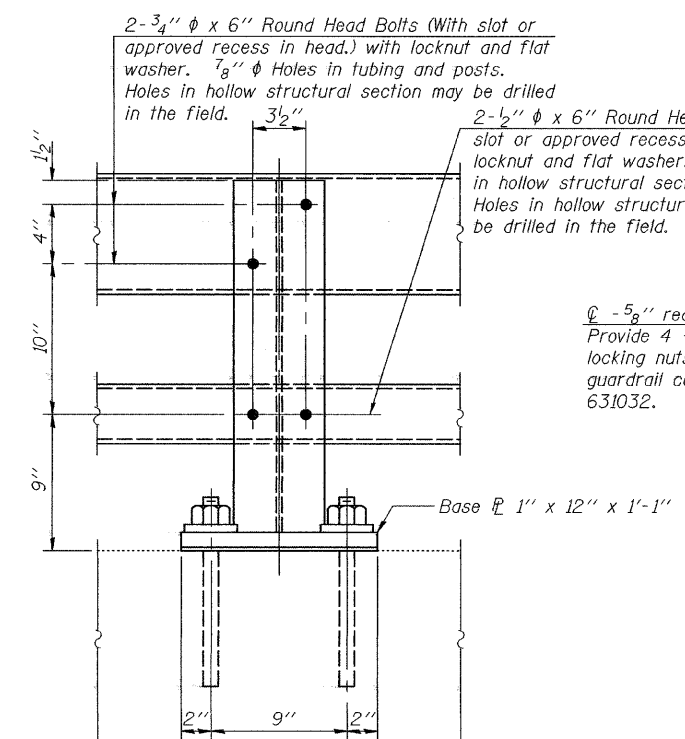
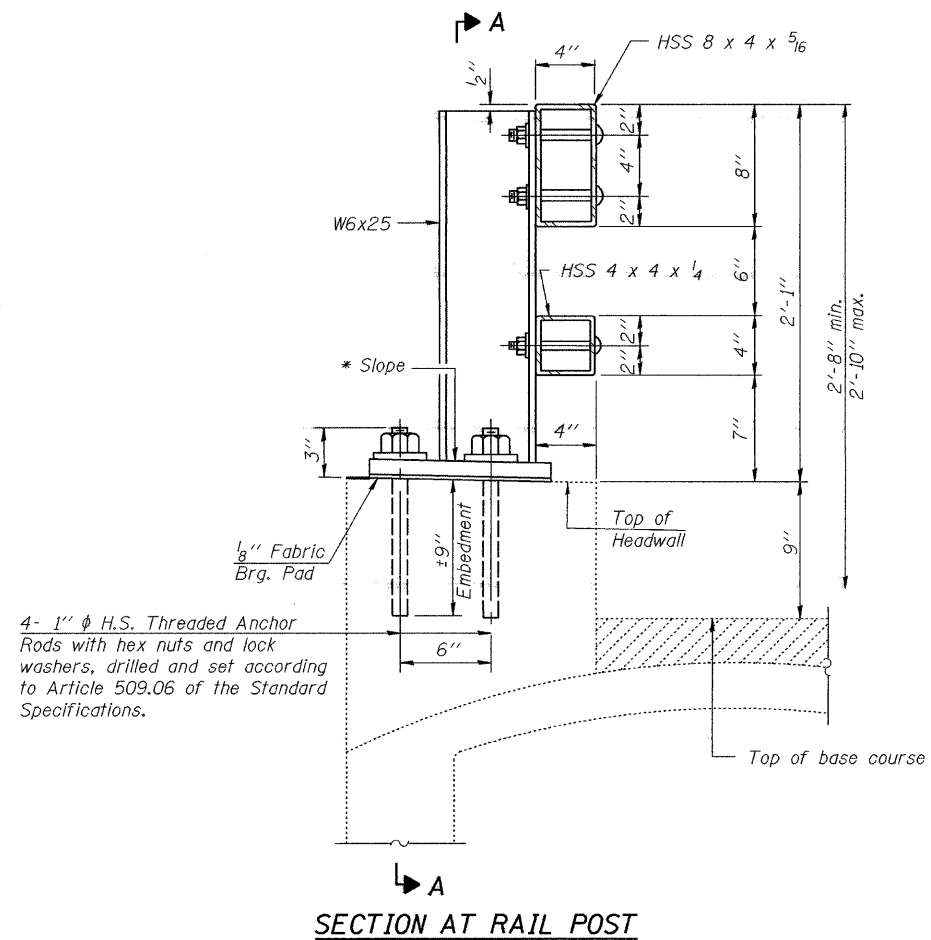


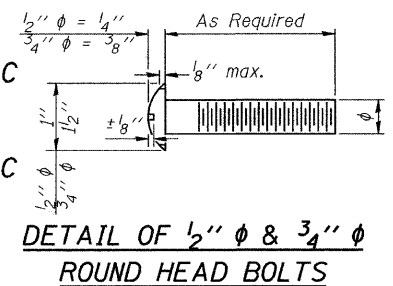
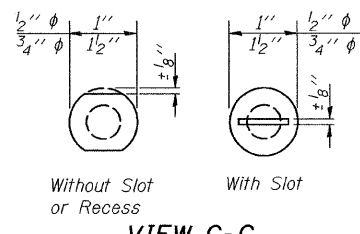
STATE OF ILLINOIS
DEPARTMENT OF TRANSPORTATION

ROUTE NO.	SECTION	COUNTY	STATE SHEETS	SHEET NO.	SHEET NO. 11 12 SHEETS
F.A.S. 1832	5BR-2	WASHINGTON	97	81	
FED. ROAD DIST. NO. 7	ILLINOIS	FED. AID PROJECT			

Contract #76949



Notes:
All field drilled holes shall be coated with an approved zinc rich paint before erection.
Posts shall not be located closer than 1'-3" to an existing bridge expansion joint or end of bridge.
Steel Bridge Rail expansion joint shall be provided between any two (2) posts which span a bridge expansion joint. Bolts located at expansion joint shall be provided with locknuts and shall be tightened only to a point that will allow railing movement.
Provide one 1/8" and two 1/16" steel shims for 25% of the posts. Shims shall be similar to base plates in size and holes.
All steel rail elements shall be galvanized according to Article 509.05 of the Standard Specifications.



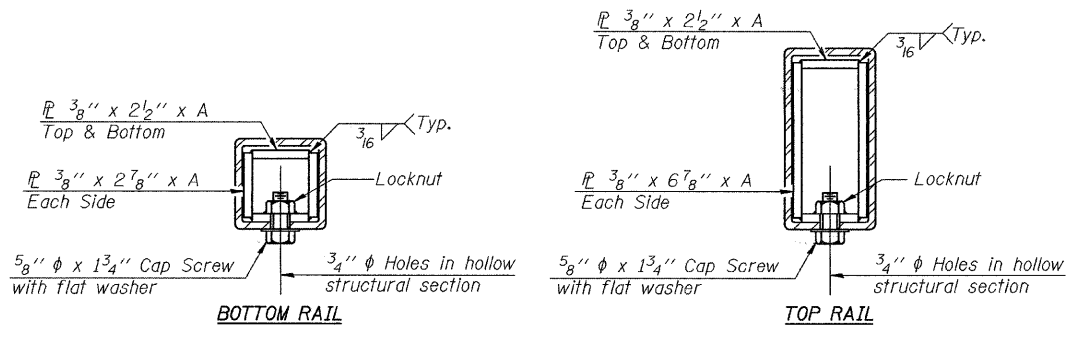
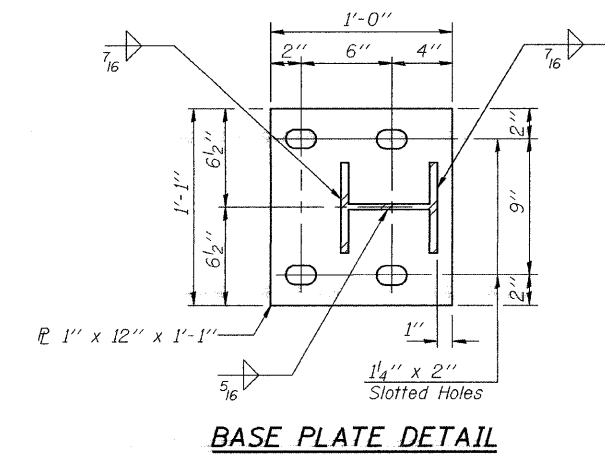
BILL OF MATERIAL

Item	Unit	Quantity
Steel Railing, Type 2399	Foot	64'-0"

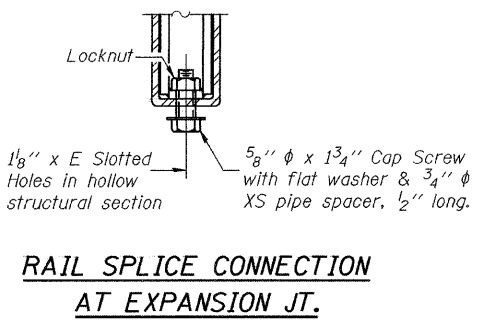
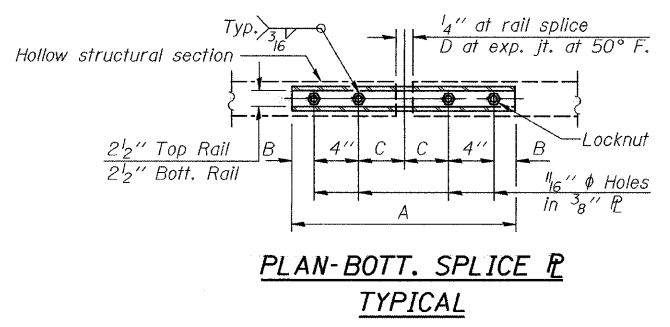
SPLICE DIMENSIONS

T	D	A	B	C	E
≤ 4"	2 1/2"	1'-8"	2"	4"	2 1/2"
> 4" ≤ 6 1/2"	3 3/4"	2'-0"	2 1/2"	5 1/2"	3 1/2"
> 6 1/2" ≤ 9"	5"	2'-4"	3 1/2"	6 1/2"	9"
> 9" ≤ 13"	7"	2'-10"	4 1/2"	8 1/2"	11"
Rail Splice	1/4"	1'-8"	2"	4"	—

T = Total movement at expansion joint as shown on the design plans.



SECTIONS AT RAIL SPLICE



DESIGNED	Nicholas R. Barnett
CHECKED	Ray Ahanchi
DRAWN	Gregory D. Farmer
CHECKED	NRB/GRA

January 28 2008
EXAMINED *Thomas J. Domagala*
PASSED *Ralph E. Anderson*

STEEL RAILING, TYPE 2399
F.A.S. RTE 1832 - SEC. 5BR-2
WASHINGTON COUNTY
STATION 1511+01.00
STRUCTURE NO. 095-0078