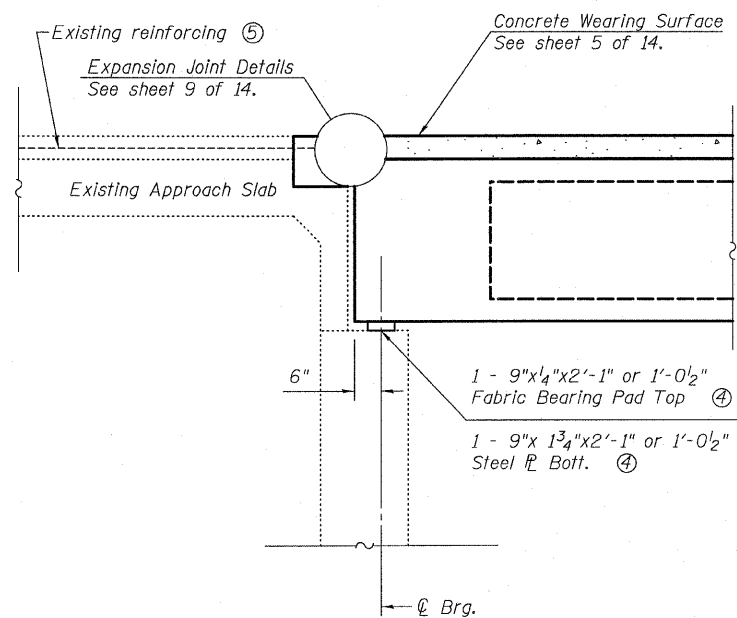
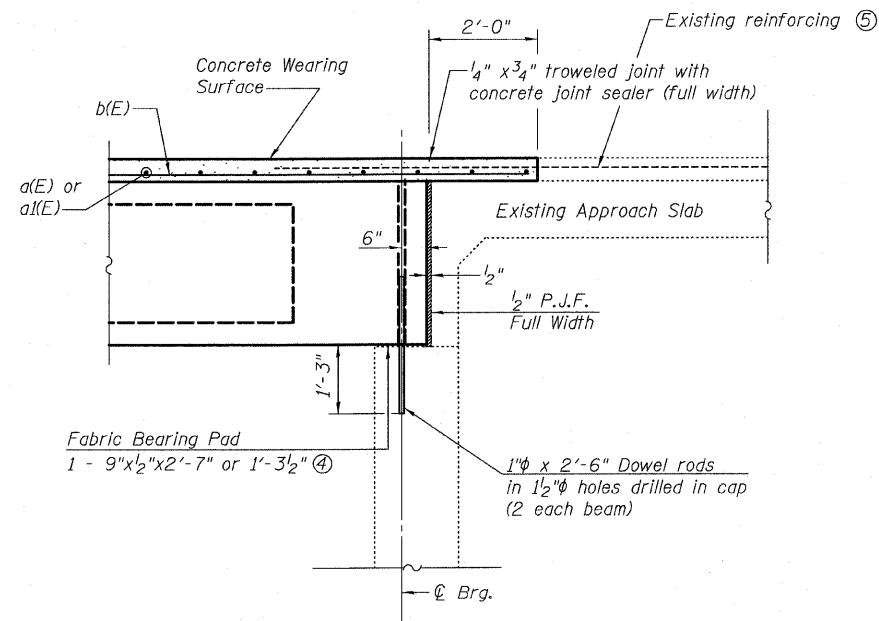


STATE OF ILLINOIS  
DEPARTMENT OF TRANSPORTATION

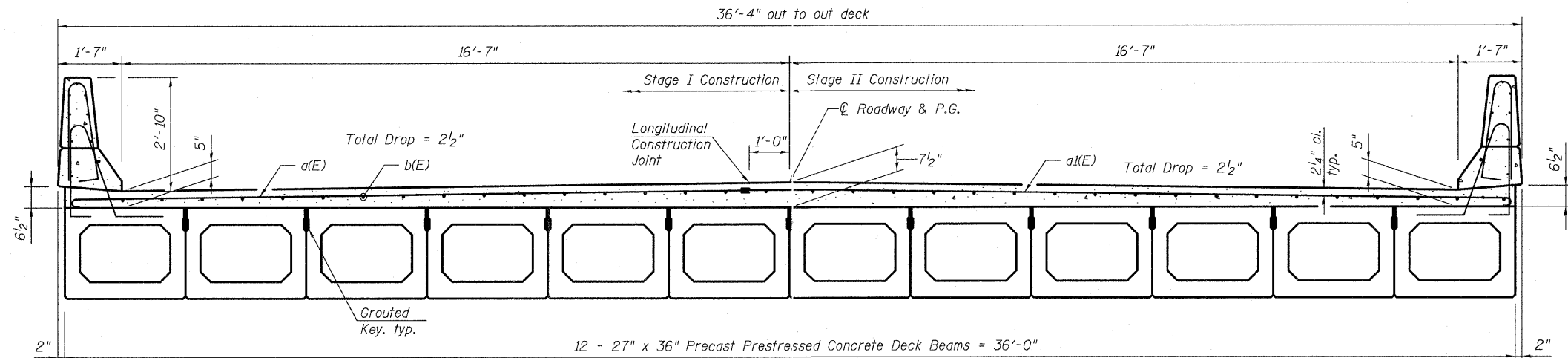
ROUTE NO.	SECTION	COUNTY	TOTAL SHEETS	SHEET NO.	SHEET NO. 6
FAP 310	57BR-1	JERSEY	25	15	14 SHEETS
FED. ROAD DIST. NO. 7	ILLINOIS	FED. AID PROJECT-	Contract #76B20		



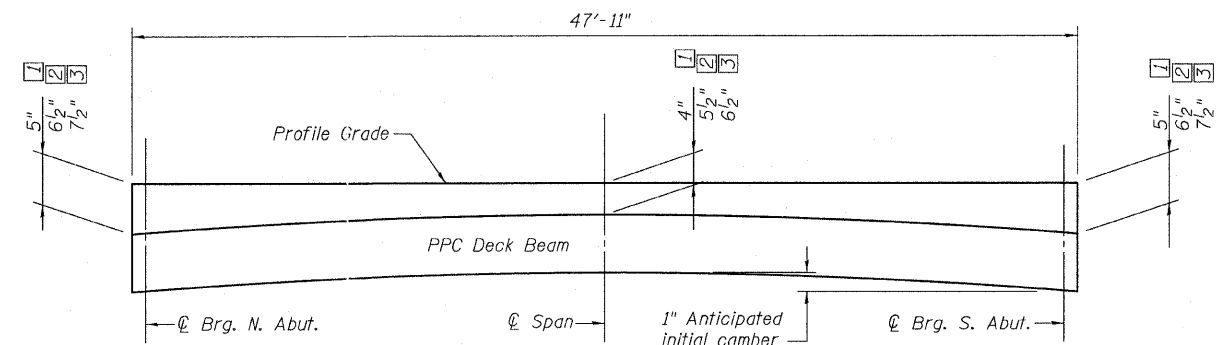
**SECTION A-A**  
(Section Thru N. Abut. (Expansion Joint))



**SECTION B-B**  
(Section Thru S. Abut. (Fixed Joint))



**CROSS SECTION NEAR ABUTMENTS**  
(Looking South)



- ① Located At Inside Face of Parapet
- ② Located At Outside Face of Fascia Beam
- ③ Located At C Roadway & P.G.

**REINFORCED CONCRETE WEARING SURFACE PROFILE**

Notes:

- ① After beams have been erected, holes shall be drilled into substructure and anchor dowels placed. Dowel holes shall be filled with non-shrink grout to top of beam and allowed to cure min. 24 hours prior to grouting the shear keys.
- ② Dowel rods drilled in cap are included in the cost of Precast Prestressed Concrete Deck Beams (27" depth).
- ③ Concrete wearing surface to be poured after grouting the shear keys.
- ④ See sheet 8 of 14 for bearing details.
- ⑤ Existing reinforcement bars shown are to be cleaned and incorporated into new construction. Cost included with Removal of Existing Superstructures No. 1

**SUPERSTRUCTURE DETAILS**  
**US ROUTE 67 OVER**  
**DEARCY CREEK**  
**FAP ROUTE 310 SECTION 57BR-1**  
**JERSEY COUNTY**  
**STATION 651+79.77**  
**STRUCTURE NO. 042-0001**