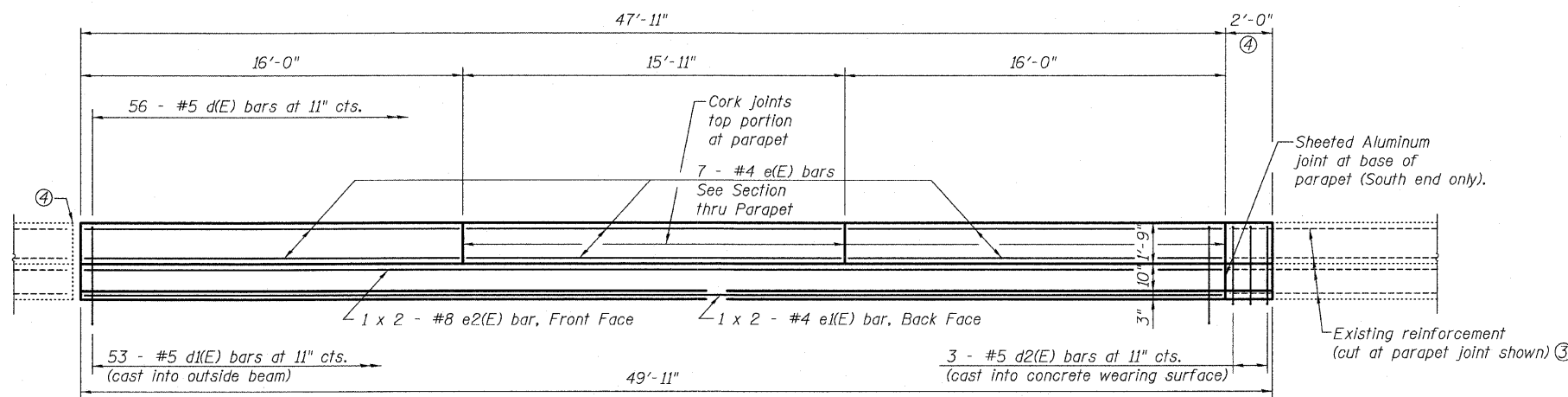


STATE OF ILLINOIS  
DEPARTMENT OF TRANSPORTATION

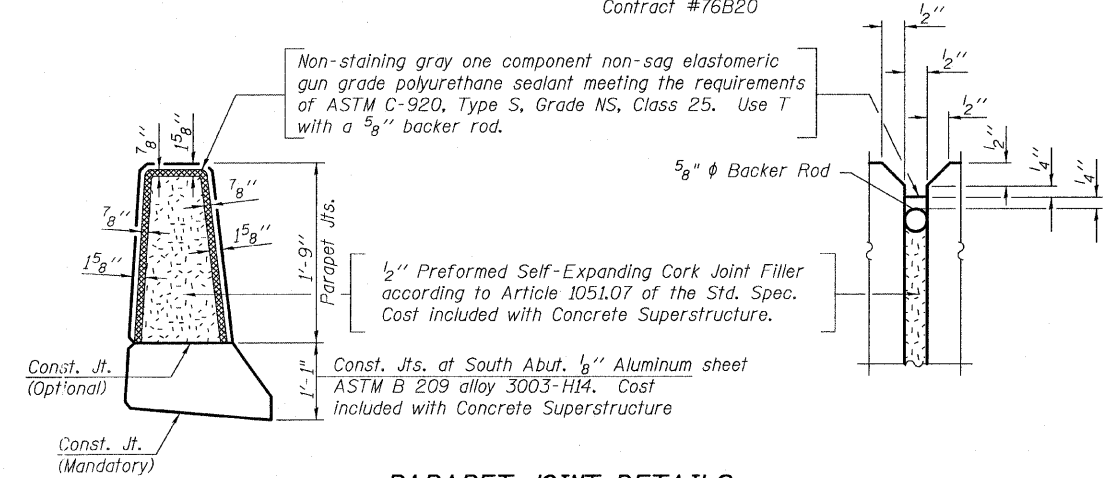
ROUTE NO.	SECTION	COUNTY	TOTAL SHEETS	SHEET NO.	SHEET NO. 7
FAP 310	57BR-1	JERSEY	25	16	14 SHEETS
FED. ROAD DIST. NO. 7	ILLINOIS	FED. AID PROJECT-			

Contract #76B20



**INSIDE ELEVATION OF PARAPET**

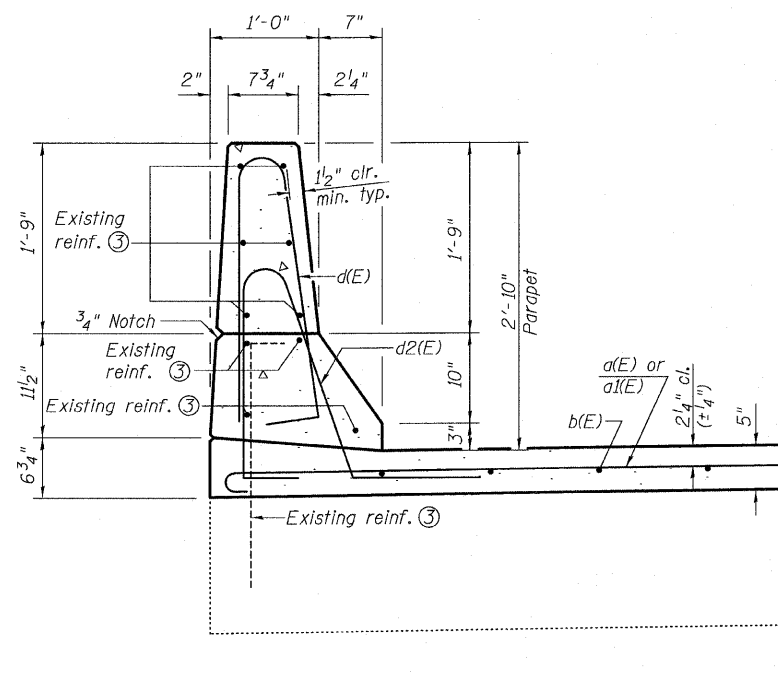
(East parapet shown, west parapet similar)



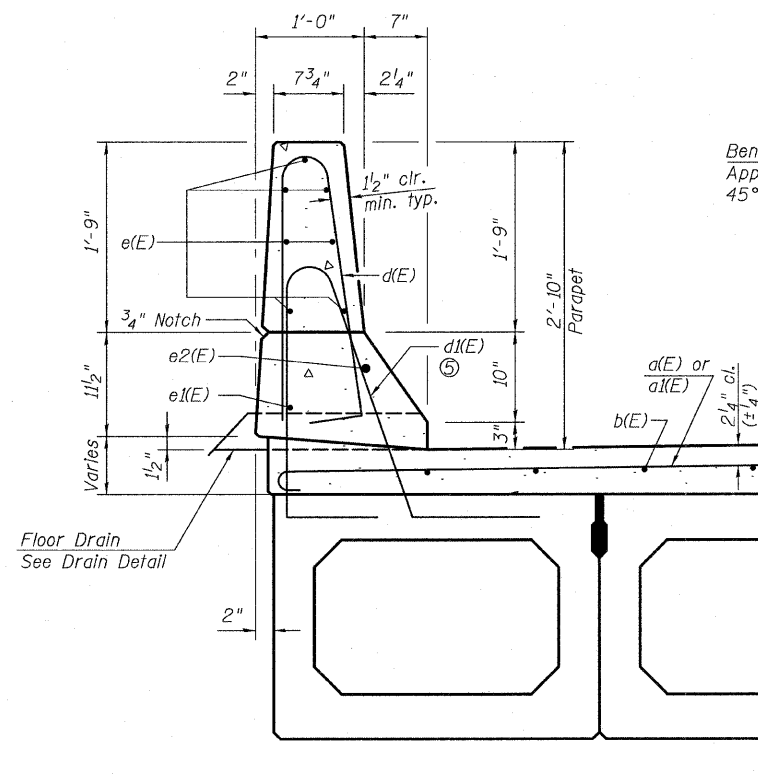
**PARAPET JOINT DETAILS**

**BILL OF MATERIAL**

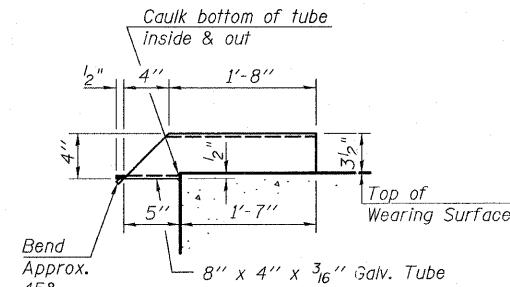
Bar	No.	Size	Length	Shape
a(E)	51	#4	17'-2"	
a1(E)	51	#4	19'-2"	
a2(E)	2	#4	19'-6"	
a3(E)	2	#4	21'-10"	
b(E)	74	#4	26'-1"	
d(E)	112	#5	5'-7"	
d1(E)	106	#5	7'-0"	
d2(E)	6	#5	5'-11"	
e(E)	42	#4	15'-7"	
e1(E)	4	#4	24'-6"	
e2(E)	4	#8	25'-6"	
Reinforcement Bars, Epoxy Coated	Pound		4,820	
Concrete Superstructure	Cu. Yd.		10.1	
Bridge Deck Grooving	Sq. Yd.		173	
Protective Coat	Sq. Yd.		224	
Concrete Wearing Surface	Sq. Yd.		184	



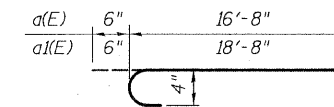
**SECTION THRU PARAPET AT APPROACH SPAN**



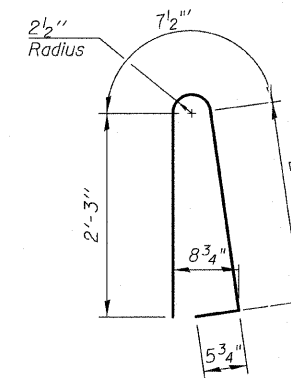
**SECTION THRU PARAPET MAIN SPAN**



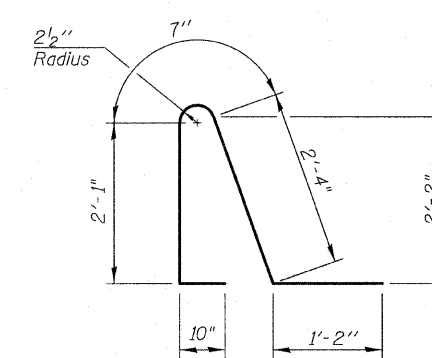
**DRAIN DETAIL**



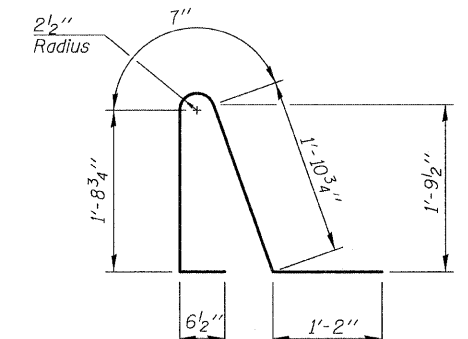
**BARS d(E) & d1(E)**



**BAR d(E)**



**BAR d1(E)**



**BAR d2(E)**

**Notes:**

- Minimum bar lap lengths in parapet:  
#4 - 1'-4"  
#8 - 3'-5"
- Bars indicated thus 1 x 2 - #5 etc. indicates 1 line of bars with 2 lengths per line.
- Existing reinforcement bars shown are to be cleaned and incorporated into new construction. Cost included with Removal of Existing Superstructures No. 1
- See abutment joint details on sheets 11 and 12 of 14, for additional information.
- Cast in outside beams only.

**SUPERSTRUCTURE DETAILS**

**US ROUTE 67 OVER**

**DEARCY CREEK**

**FAP ROUTE 310 SECTION 57BR-1**

**JERSEY COUNTY**

**STATION 651+79.77**

**STRUCTURE NO. 042-0001**