



Illinois Department of Transportation

2300 South Dirksen Parkway / Springfield, Illinois / 62764

February 21, 2008

SUBJECT: FAI Route 70 / FAI Route 55 (I-70/55)
Section 60-6HBR-P, 60-1 HB-P
Madison County
Contract No. 76B29
Item No. 18, March 7, 2008 Letting
Addendum A

NOTICE TO PROSPECTIVE BIDDERS:

Attached is an addendum to the plans or proposal. This addendum involves revised and/or added material.

1. Revised sheets 7 – 11 of the fold-up plans.

Prime contractors must utilize the enclosed material when preparing their bid and must include any Schedule of Prices changes in their bidding proposal.

Bidders using computer-generated bids are cautioned to reflect any and all Schedule of Prices changes, if involved, into their computer programs.

Very truly yours,

Eric E. Harm
Interim Bureau Chief
Bureau of Design and Environment

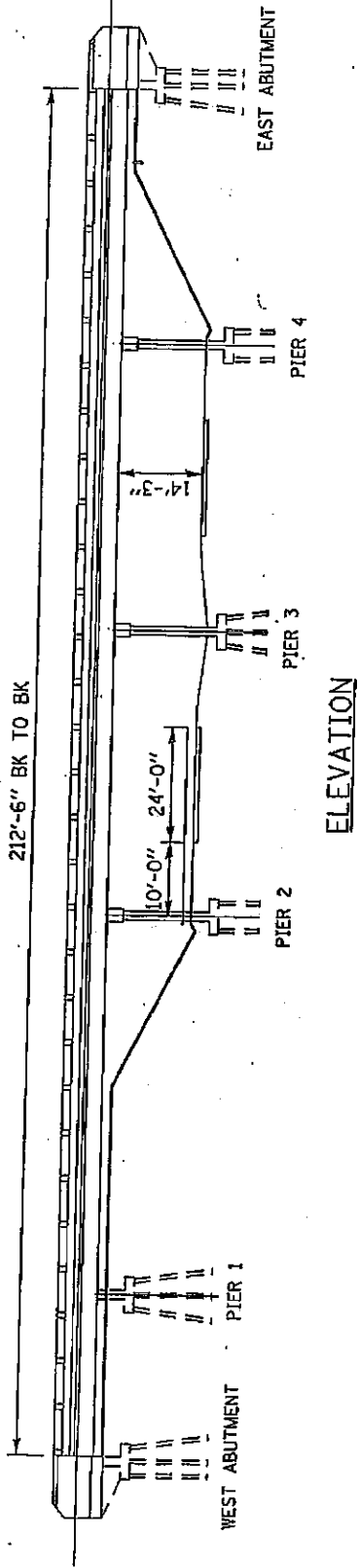
A handwritten signature in black ink, appearing to read 'Ted B. Walschleger' with a small 'P.E.' to the right.

By: Ted B. Walschleger, P. E.
Engineer of Project Management

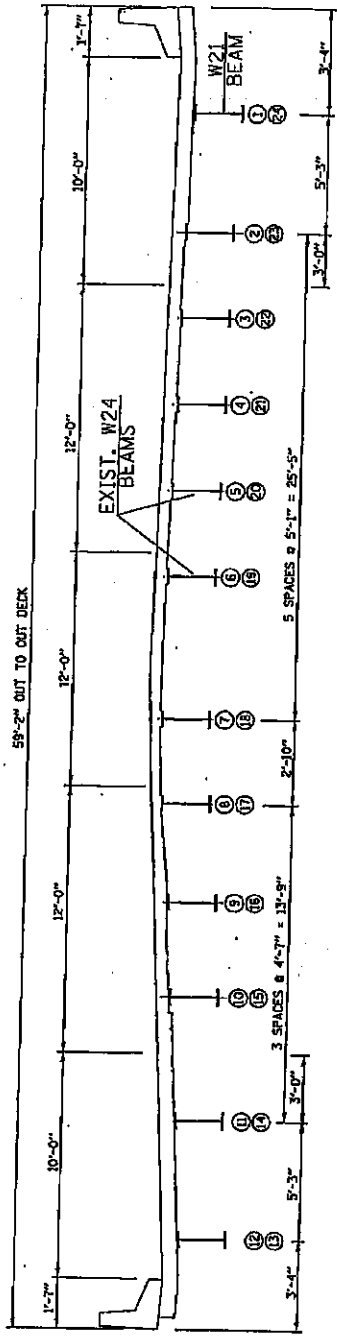
cc: Mary C. Lamie, Region 5, District 8; Roger Driskell; R. E. Anderson;
Estimates

TBW:DB:jc

TOTAL SHEETS	SHEET NO.
14	7
CONTRACT NO. 1 Z6B29	



ELEVATION

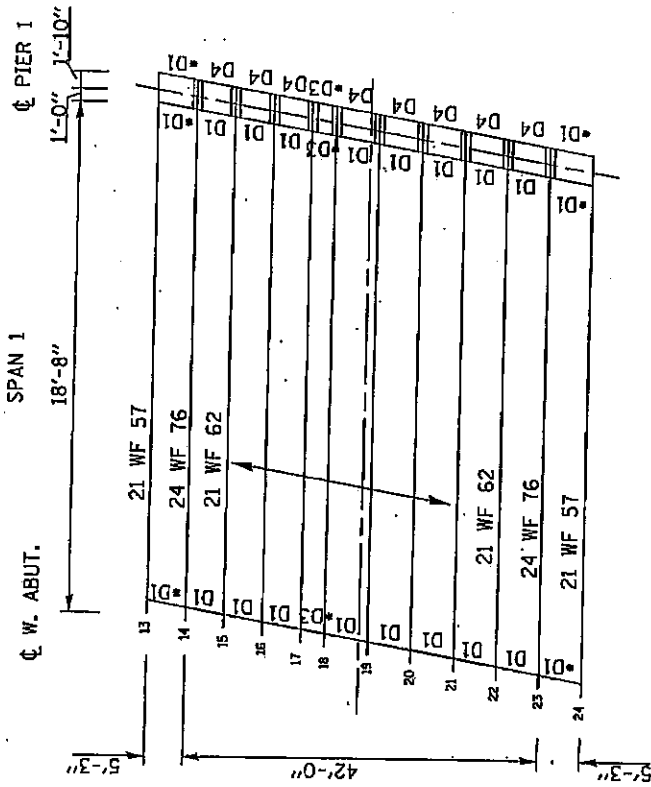


CROSS SECTION

S.N. 060-0006 (EB) AND S.N. 060-0007 (WB)
 ILLINOIS DEPARTMENT OF TRANSPORTATION
ELEVATION AND CROSS SECTION LOCATION 1 & 2
 EAI 702 / EAI 55
 60-6HBR-P, 60-1HB-P
 MADISON COUNTY
 PLOT DATE: DATE-TIME

Rev. Sheet 2-21-08

TOTAL SHEETS	SHEET NO.
14	8
CONTRACT NO.: 76B29	



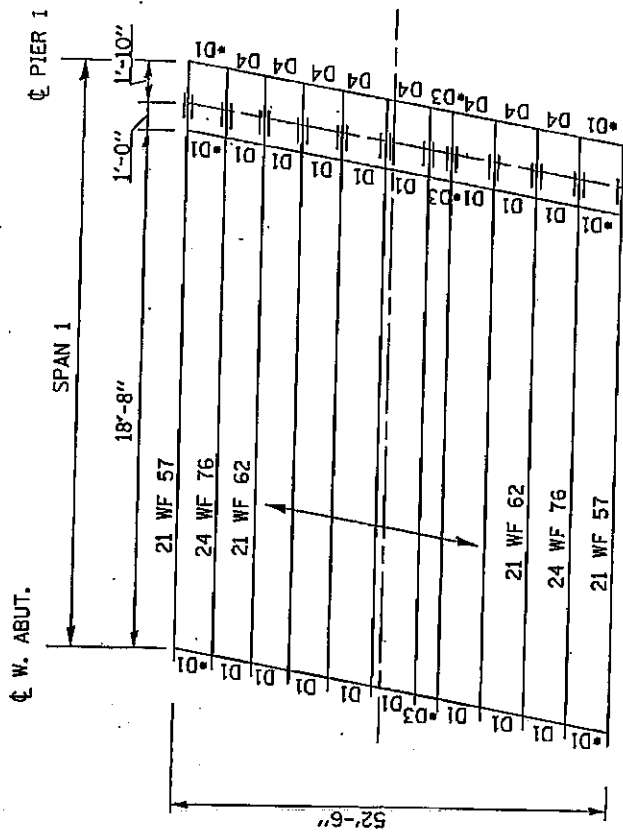
S.N. 060-0006 (EB)

ILLINOIS DEPARTMENT OF TRANSPORTATION
STRUCTURAL STEEL LAYOUT
 (SPAN 1)
 LOCATION 1
 EAL 707, FAL 55
 60-GHBR-P, 60-IHB-P
 MADISON COUNTY

PLOT DATE: .DATE-TIME.

Rev. 2-21-09

TOTAL SHEETS	SHEET NO.
14	10
CONTRACT NO.: 76829	



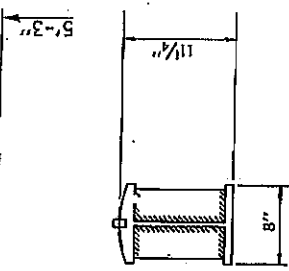
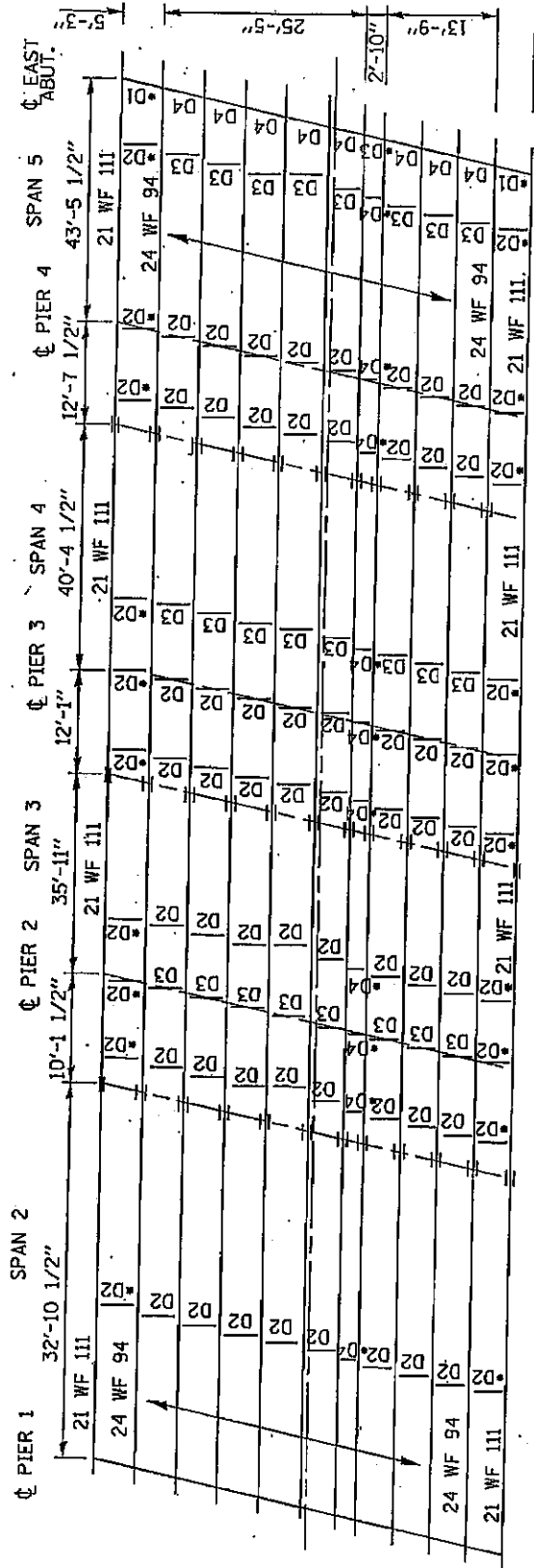
S.N. 060-0007 (WB)

ILLINOIS DEPARTMENT OF TRANSPORTATION
STRUCTURAL STEEL LAYOUT
 (SPAN 1)
 LOCATION 2
 EAI_702_EAI_55
 60-6HBR-P_60-1HB-P
 MADISON COUNTY

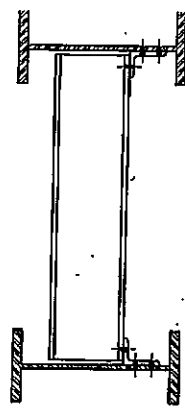
PLOT DATE: DATE-TIME

Rev. 2-21-08

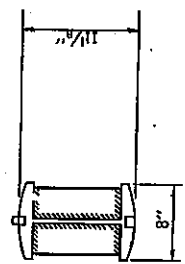
TOTAL SHEETS	SHEET NO.
14	11
CONTRACT NO.: 75R29	



DETAIL OF BOLSTER
@ PIER 3
PIER 3: 10 EACH



- DIAPHRAGM
- D1: 8 WF 31 = 16 EACH
 - D2: 10 WF 29 = 48 EACH
 - D3: 10 WF 29 = 32 EACH
 - D4: 10 WF 33 = 16 EACH
 - *D1: 10 WF 33 = 10 EACH
 - *D2: 10 WF 30 = 20 EACH
 - *D3: 10 WF 33 = 4 EACH
 - *D4: 10 WF 30 = 10 EACH



DETAIL OF ROCKER
AT WEST ABUTMENT
EAST ABUTMENT & PIER 1,2,4
ABUTMENTS: 20 EACH
PIER 1,2,4: 30 EACH

S.N. 060-0007 (WB)

ILLINOIS DEPARTMENT OF TRANSPORTATION
STRUCTURAL STEEL LAYOUT
(SPAN 2,3,4,&5) AND
STEEL DETAILS LOCATION 2
FAI 70/ FAI 55
60-6HBB-P, 60-1HB-P
MADISON COUNTY
PLOT DATE: DATE-TIME

Rev. 2-21-08