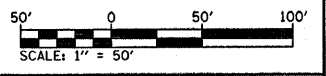
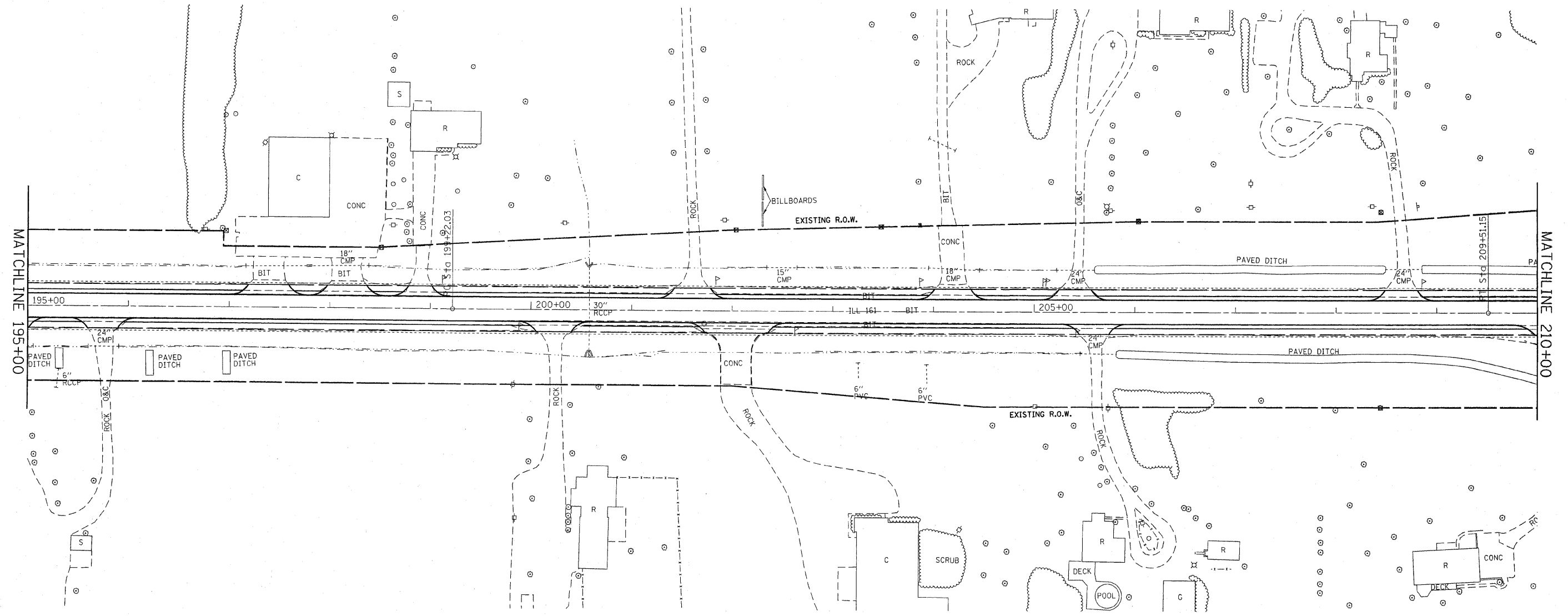


EXIST. CURVE EX1-3
 PI STA. = 204+36.59
 $\Delta = 0^\circ 25' 44''$ (LT)
 $D = 0^\circ 02' 30''$
 $R = 137,509.87'$
 $T = 514.56'$
 $L = 1,029.12'$
 $E = 0.96'$
 $e = \text{-----}$
 $T.R. = \text{-----}$
 $S.E. \text{ RUN} = \text{-----}$
 $P.C. \text{ STA.} = 199+22.03$
 $P.T. \text{ STA.} = 209+51.15$



FILE NAME = #FILEL*	USER NAME = #USER*	DESIGNED - ___	REVISED - ___
		DRAWN - ___	REVISED - ___
	PLOT SCALE = #SCALE*	CHECKED - ___	REVISED - ___
	PLOT DATE = #DATE*	DATE - _____	REVISED - ___

**STATE OF ILLINOIS
 DEPARTMENT OF TRANSPORTATION**

PLAN VIEW

SCALE: _____ SHEET NO. 2 OF 21 SHEETS STA. 195±00 TO STA. 210±00

F.A.P. RTE. 805	SECTION (101,102,61-1)RS	COUNTY MARION	TOTAL SHEETS 81	SHEET NO. 11
FED. ROAD DIST. NO. _____		ILLINOIS FED. AID PROJECT		
CONTRACT NO. 76B33				