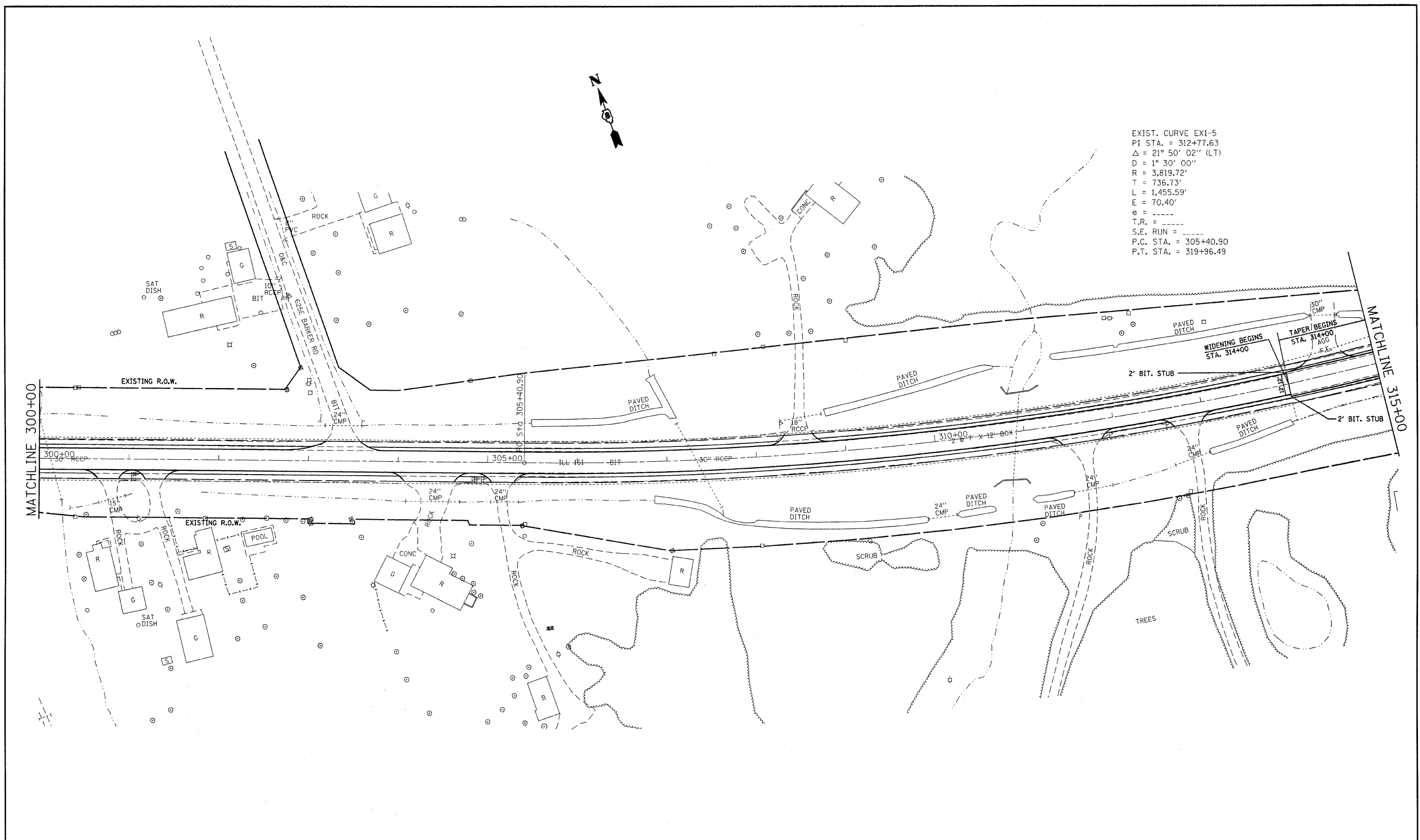
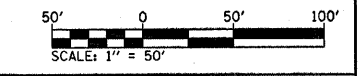




EXIST. CURVE EX1-5
 PI STA. = 312+77.63
 $\Delta = 21^\circ 50' 02''$ (LT)
 $D = 1^\circ 30' 00''$
 $R = 3,819.72'$
 $T = 736.73'$
 $L = 1,455.59'$
 $E = 70.40'$
 $e = \text{-----}$
 $T.R. = \text{-----}$
 $S.E. \text{ RUN} = \text{-----}$
 P.C. STA. = 305+40.90
 P.T. STA. = 319+96.49



117 BENCHMARK
 CHIS " " IN WEST END OF SOUTH HEADWALL
 OF A DOUBLE BOX CULVERT. ELEV. = 506.87
 STA. 310+65; 53' RT



FILE NAME = #FILE#	USER NAME = #USER#	DESIGNED - ---	REVISED - ---
		DRAWN - ---	REVISED - ---
	PLOT SCALE = #SCALE#	CHECKED - ---	REVISED - ---
	PLOT DATE = #DATE#	DATE - ---	REVISED - ---

**STATE OF ILLINOIS
 DEPARTMENT OF TRANSPORTATION**

PLAN VIEW

SCALE: _____ SHEET NO. 9 OF 21 SHEETS STA. 300+00 TO STA. 315+00

F.A.P. RTE.	SECTION	COUNTY	TOTAL SHEETS	SHEET NO.
805	(101,102,61-1-1)RS	MARION	81	18
CONTRACT NO. 76B33				
FED. ROAD DIST. NO. ILLINOIS FED. AID PROJECT				