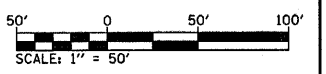


EXIST. CURVE EX1-7
 PI STA. = 487+99.05
 $\Delta = 0^\circ 21' 58''$ (LT)
 $D = 0^\circ 02' 31''$
 $R = 136,738.00'$
 $T = 436.90'$
 $L = 873.80'$
 $E = 0.70'$
 $e = \text{-----}$
 $T.R. = \text{-----}$
 $S.E. RUN = \text{-----}$
 $P.C. STA. = 483+62.15$
 $P.T. STA. = 492+35.95$



FILE NAME = #FILE#	USER NAME = #USER#	DESIGNED - ---	REVISED - ---
		DRAWN - ---	REVISED - ---
	PLOT SCALE = #SCALE#	CHECKED - ---	REVISED - ---
	PLOT DATE = #DATE#	DATE - ---	REVISED - ---

**STATE OF ILLINOIS
 DEPARTMENT OF TRANSPORTATION**

PLAN VIEW

SCALE: _____ SHEET NO. 21 OF 21 SHEETS STA. 480+00 TO STA. 495+00

F.A.P. RTE. 805	SECTION (101,102,61-1-1)RS	COUNTY MARION	TOTAL SHEETS 81	SHEET NO. 30
CONTRACT NO. 76B33				
FED. ROAD DIST. NO. ILLINOIS FED. AID PROJECT				