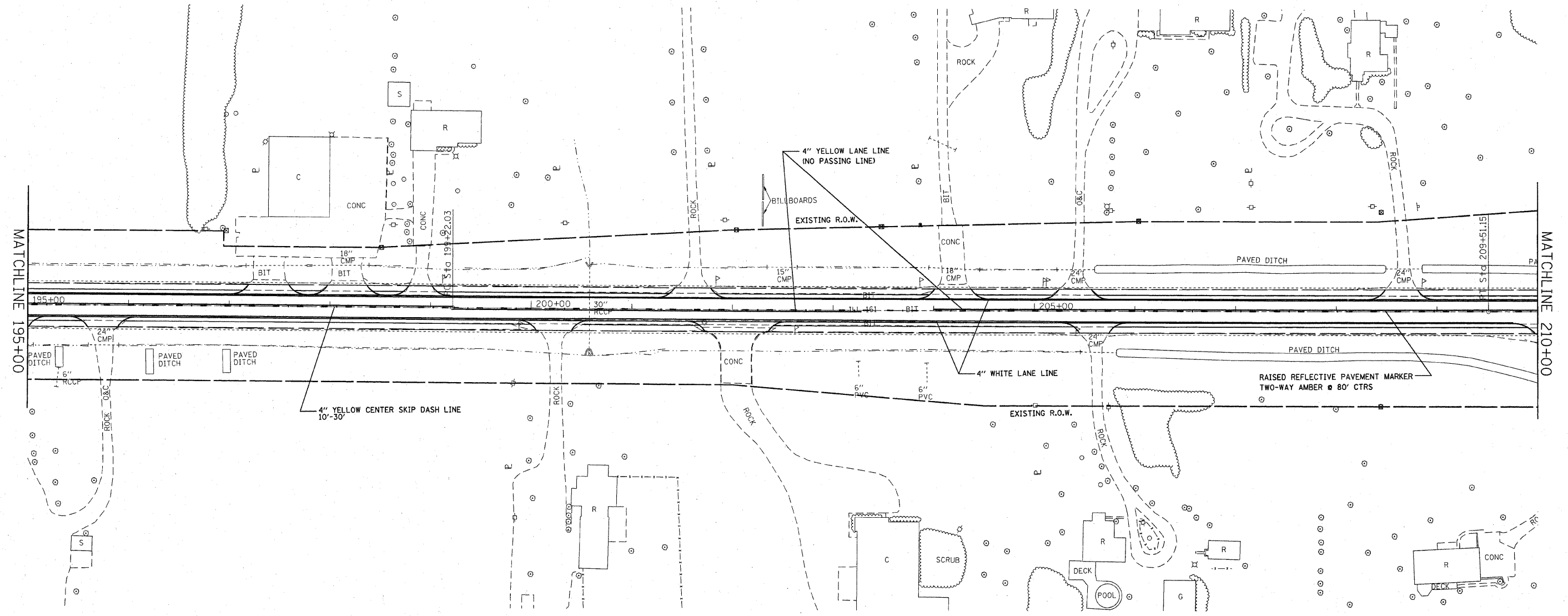




EXIST. CURVE EX1-3
 PI STA. = 204+36.59
 $\Delta = 0^\circ 25' 44''$ (LT)
 $D = 0^\circ 02' 30''$
 $R = 137,509.87'$
 $T = 514.56'$
 $L = 1,029.12'$
 $E = 0.96'$
 $\theta = \text{-----}$
 $T.R. = \text{-----}$
 $S.E. \text{ RUN} = \text{-----}$
 $P.C. \text{ STA.} = 199+22.03$
 $P.T. \text{ STA.} = 209+51.15$



FILE NAME =	USER NAME = *USER*	DESIGNED -	REVISED -
*FILEL#		DRAWN -	REVISED -
	PLOT SCALE = #SCALE#	CHECKED -	REVISED -
	PLOT DATE = #DATE#	DATE -	REVISED -

**STATE OF ILLINOIS
 DEPARTMENT OF TRANSPORTATION**

PAVEMENT MARKINGS
 SCALE: _____ SHEET NO. 2 OF 21 SHEETS STA. 195+00 TO STA. 210+00

F.A.P. RTE.	SECTION	COUNTY	TOTAL SHEETS	SHEET NO.
805	(101,102,61-1-1)RS	MARTON	81	32
CONTRACT NO. 16B33				
FED. ROAD DIST. NO. - ILLINOIS FED. AID PROJECT				