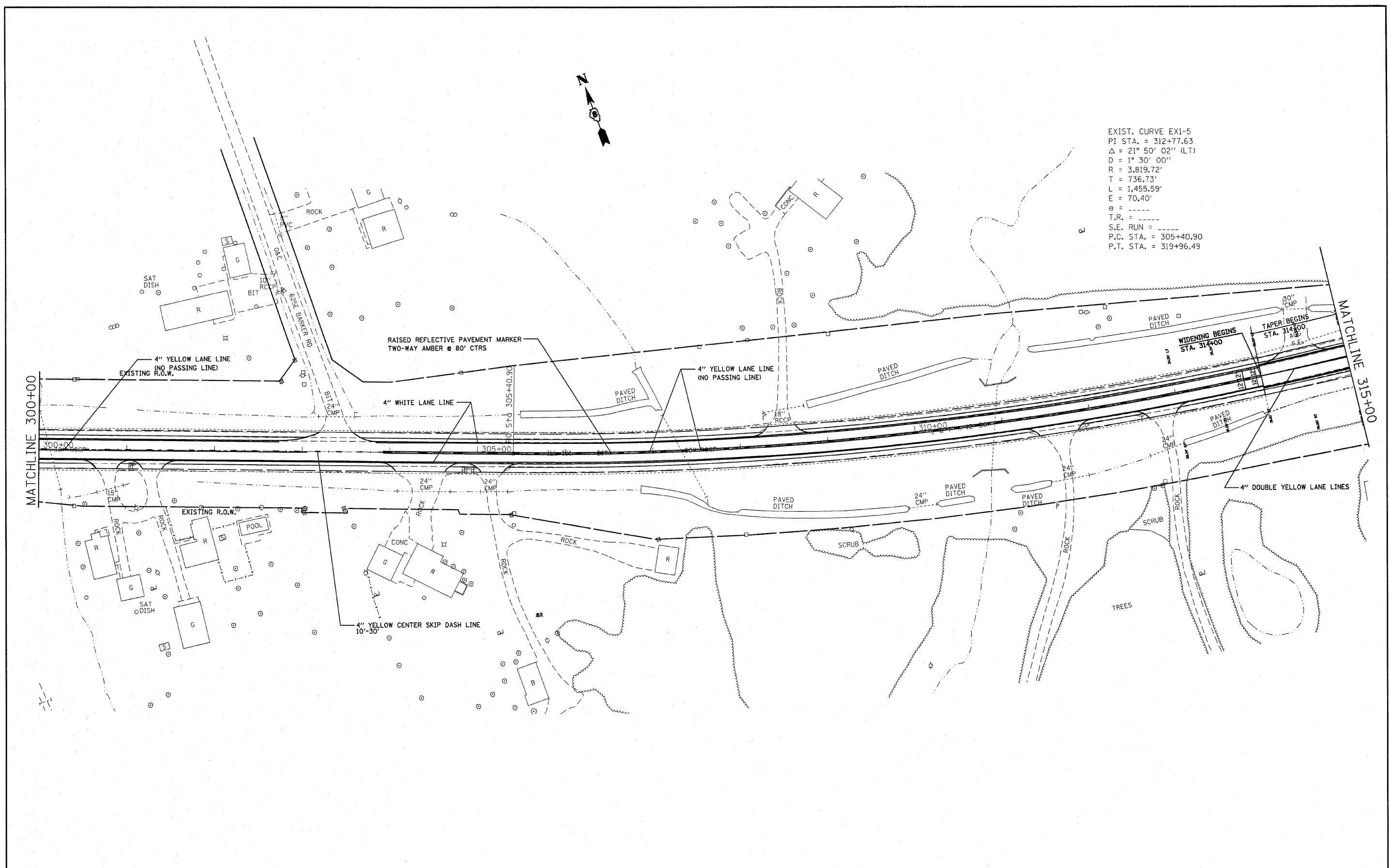




EXIST. CURVE EX1-5
 PI STA. = 312+77.63
 $\Delta = 21^\circ 50' 02''$ (LT)
 $D = 1^\circ 30' 00''$
 $R = 3,819.72'$
 $T = 736.73'$
 $L = 1,455.59'$
 $E = 70.40'$
 $e =$
 $T.R. =$
 $S.E. RUN =$
 $P.C. STA. = 305+40.90$
 $P.T. STA. = 319+96.49$



FILE NAME = #FILE#	USER NAME = #USER#	DESIGNED - ---	REVISED - ---	STATE OF ILLINOIS DEPARTMENT OF TRANSPORTATION	PAVEMENT MARKINGS			F.A.P. RTE. 805	SECTION (101,102,61-1-1)RS	COUNTY MARTON	TOTAL SHEETS 81	SHEET NO. 39
	PLOT SCALE = #SCALE#	CHECKED - ---	REVISED - ---		SCALE: -----	SHEET NO. 9 OF 21 SHEETS	STA. 300+00 TO STA. 315+00	CONTRACT NO. 76833		ILLINOIS FED. AID PROJECT		
	PLOT DATE = #DATE#	DATE - -----	REVISED - ---									