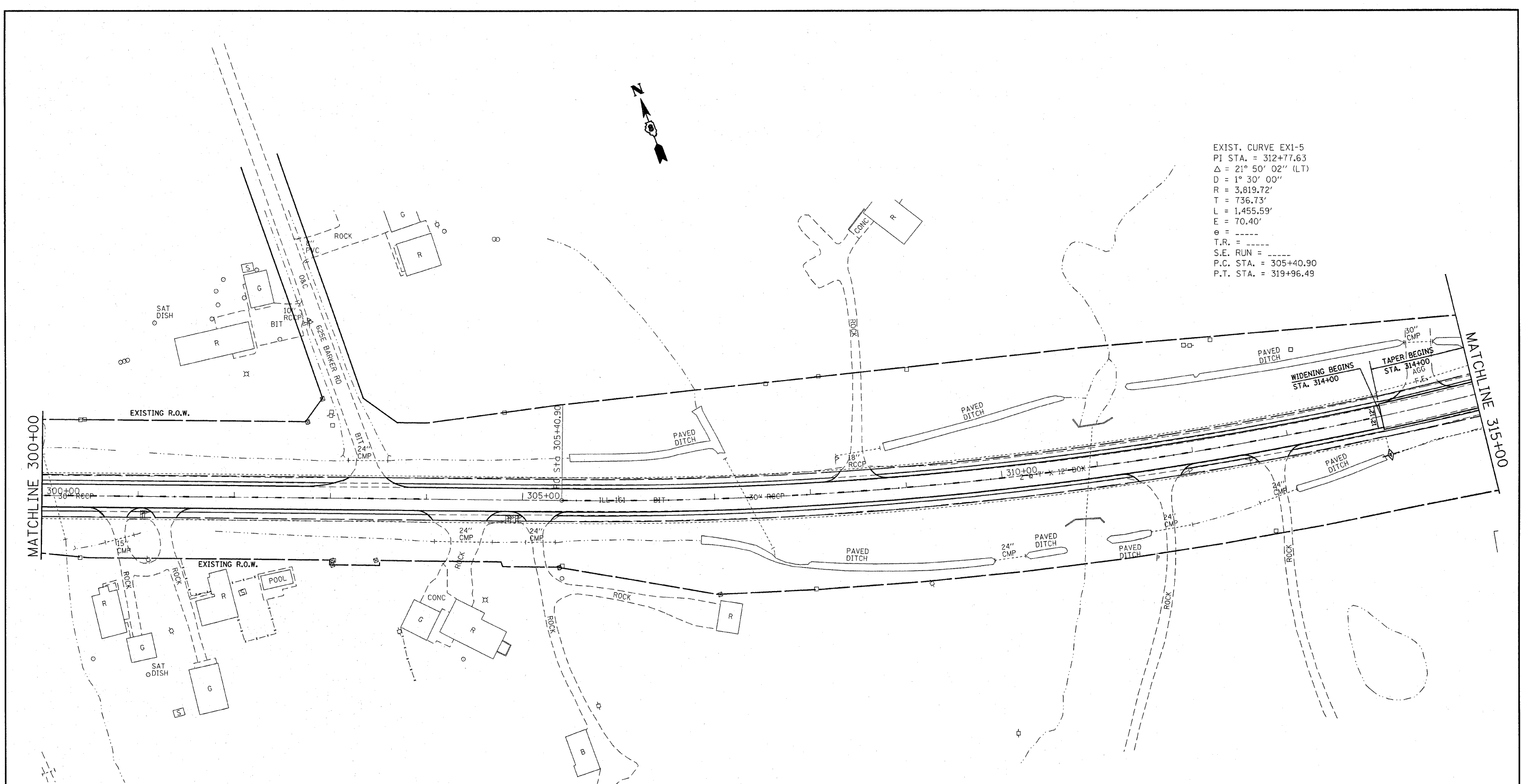




EXIST. CURVE EX1-5  
 PI STA. = 312+77.63  
 $\Delta = 21^\circ 50' 02''$  (LT)  
 $D = 1^\circ 30' 00''$   
 $R = 3,819.72'$   
 $T = 736.73'$   
 $L = 1,455.59'$   
 $E = 70.40'$   
 $e = \text{-----}$   
 $T.R. = \text{-----}$   
 $S.E. \text{ RUN} = \text{-----}$   
 $P.C. \text{ STA.} = 305+40.90$   
 $P.T. \text{ STA.} = 319+96.49$



**LEGEND**

- TEMPORARY DITCH CHECK- ROLLED EXCELSIOR, SILT WEDGES/PANELS
- TEMPORARY DITCH CHECK- AGGREGATE
- EROSION CONTROL BLANKET
- PERIMETER EROSION BARRIER- SILT FILTER FENCE OR OTHER AS APPROVED BY THE ENGINEER
- INLET AND PIPE PROTECTION- STRAW BALES, FILTER FABRIC, AGGREGATES

FILE NAME =	USER NAME = #USER#	DESIGNED -	REVISED -
#FILE#		DRAWN -	REVISED -
		CHECKED -	REVISED -
		DATE -	REVISED -

**STATE OF ILLINOIS  
 DEPARTMENT OF TRANSPORTATION**

**STORM WATER POLLUTION  
 PREVENTION PLAN**

SCALE: 1"=50' SHEET NO. \_\_\_ OF \_\_\_ SHEETS STA. 300+00 TO STA. 315+00

F.A.P. RTE.	SECTION	COUNTY	TOTAL SHEETS	SHEET NO.
805	(101,102,61-1-1)RS	MARION	81	55
CONTRACT NO. 76B33				
FED. ROAD DIST. NO. ILLINOIS FED. AID PROJECT				