

F.A.P. RTE.	SECTION	COUNTY	TOTAL SHEETS	SHEET NO.
885	104BR-1	UNION	37	1

STATE OF ILLINOIS
DEPARTMENT OF TRANSPORTATION
DIVISION OF HIGHWAYS

PROPOSED HIGHWAY PLANS

FAP ROUTE 885 (IL 146)
SECTION 104BR-1
PROJECT: BHF-0885(037)
UNION COUNTY
C-99-005-08

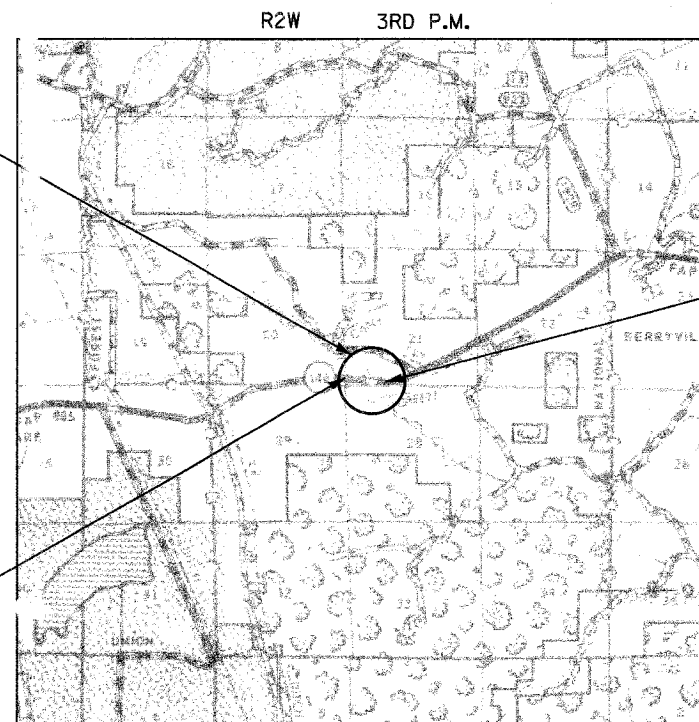
PPC DECK BEAM SUPERSTRUCTURE REPLACEMENT
OVER DUTCH CREEK

INDEX OF SHEETS

SHEET NO.	DESCRIPTION
1	COVER SHEET
2	GENERAL NOTES AND STANDARDS
3	SUMMARY OF QUANTITIES
4	TYPICAL SECTIONS
5-6	SCHEDULE OF QUANTITIES
7	BENCHMARKS AND CROSS-TIES
8	SN 091-0059 (DUTCH CREEK) PLAN & PROFILE
9	TRAFFIC CONTROL PLAN SHEET
10	EROSION CONTROL PLAN
11	MISCELLANEOUS DETAILS
12-24	STRUCTURE PLANS
25-33	EXISTING STRUCTURE PLANS
34-37	SN 091-0059 (DUTCH CREEK) CROSS SECTIONS

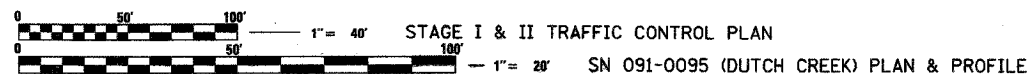


138'-11 1/2" BK TO BK ABUTMENTS
45'-0" STRUCTURE WIDTH
PPC DECK BEAM SUPERSTRUCTURE
REPLACEMENT SN 091-0059,
☉ BRIDGE STA 268+27.00



IMPROVEMENTS END
STA 271+00.00

IMPROVEMENTS BEGIN
STA 265+87.00



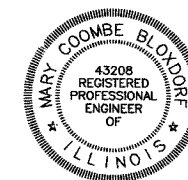
FULL SIZE PLANS HAVE BEEN PREPARED USING STANDARD
ENGINEERING SCALES. REDUCED SIZED PLANS WILL NOT
CONFORM TO STANDARD SCALES. IN MAKING MEASUREMENTS
ON REDUCED PLANS, THE ABOVE SCALES MAY BE USED.

J.U.L.I.E.
JOINT UTILITY LOCATION INFORMATION FOR EXCAVATION
1-800-892-0123

DISTRICT 9 NO. (618) 549-2171
PROJECT ENGINEER: DAVID PICHE
UNIT CHIEF:
TOWNSHIP: JONESBORO
CONTRACT NO. 78025

GROSS AND NET LENGTH OF PROJECT = 513.00 FEET = 0.097 MILES
FUNCTIONAL CLASSIFICATION: OTHER PRINCIPAL ARTERIAL
DESIGN SPEED: 55 MPH POSTED SPEED: 55 MPH
ADT: 4300(2005) PV: 82.6% TRUCKS: 17.4%

LOCATION MAP NOT TO SCALE



MARY COOMBE BLOXDORF, P.E., S.E.
DATE: Dec 3 2007
EXPIRES NOVEMBER 30, 2009

STATE OF ILLINOIS
DEPARTMENT OF TRANSPORTATION
DIVISION OF HIGHWAYS

SUBMITTED: Dec 6 20 07
Mary Coombe
DEPUTY DIRECTOR OF HIGHWAYS, REGION ENGINEER
February 1, 20 08
Eric E. Horn
ENGINEER OF DESIGN AND ENVIRONMENT
February 1, 20 08
Christine M. Reed
DIRECTOR OF HIGHWAYS, CHIEF ENGINEER

PRINTED BY THE AUTHORITY
OF THE STATE OF ILLINOIS

COOMBE-BLOXDORF P.C.
Engineers / Land Surveyors
Springfield, Illinois
Design Firm License No. 184-002703