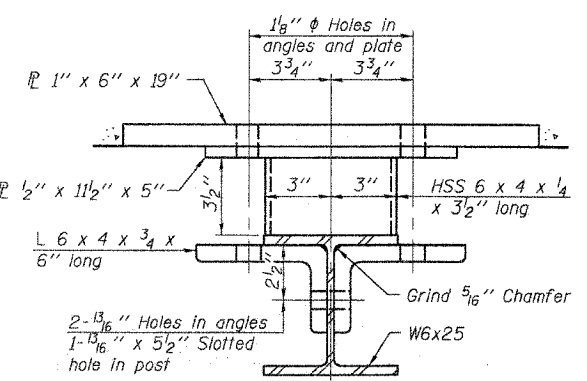
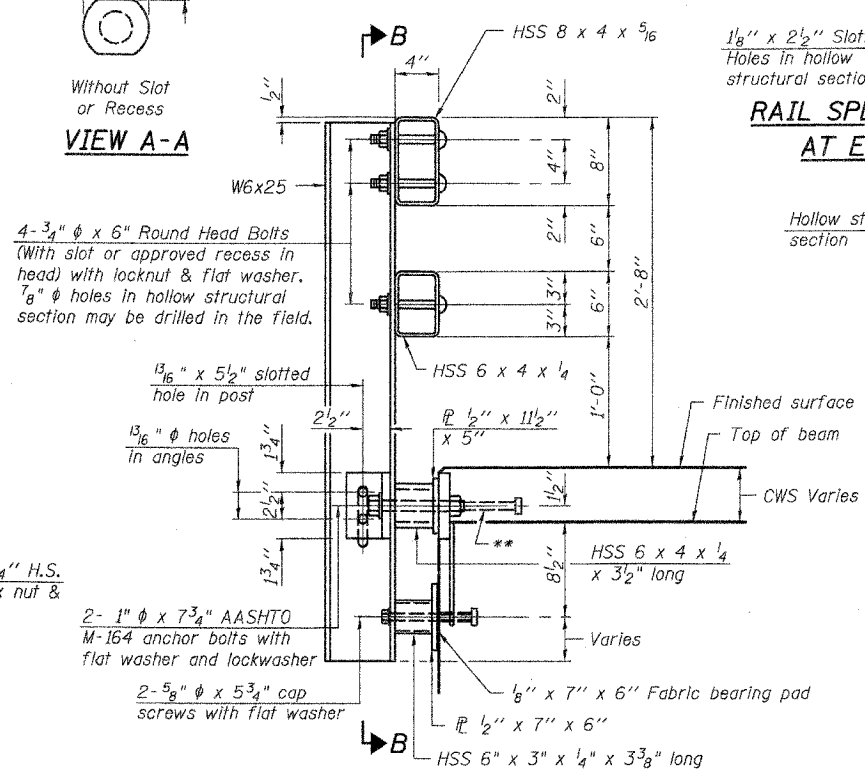


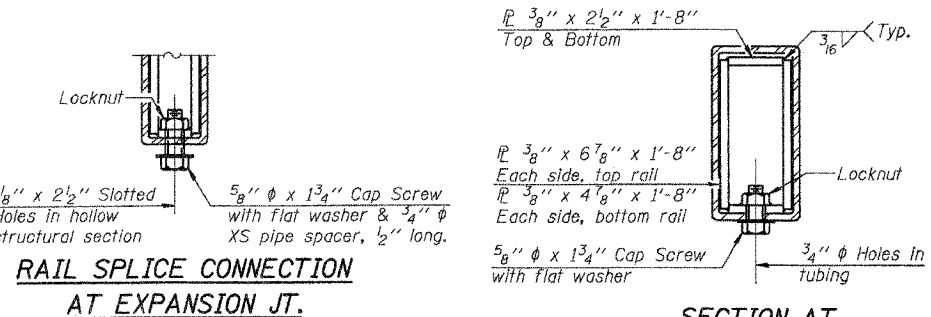
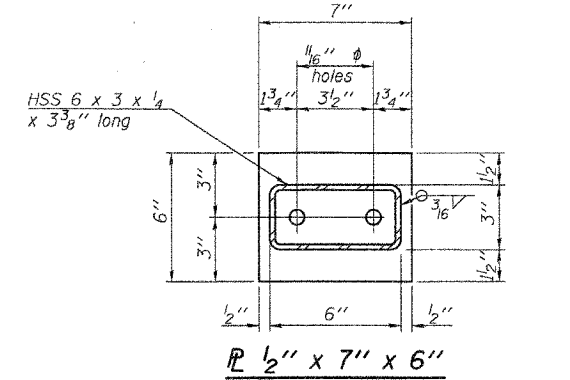
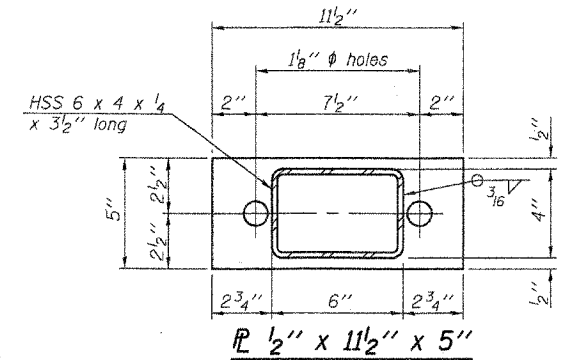
SECTION B-B



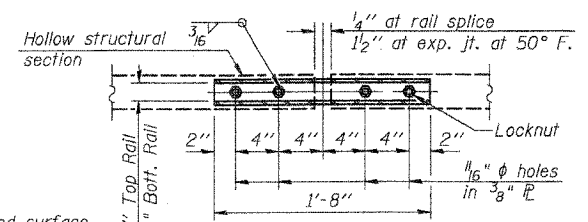
SECTION C-C



SECTION AT RAIL POST

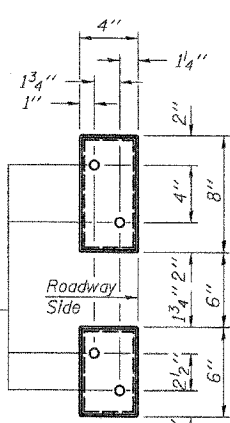


RAIL SPLICE CONNECTION AT EXPANSION JT.

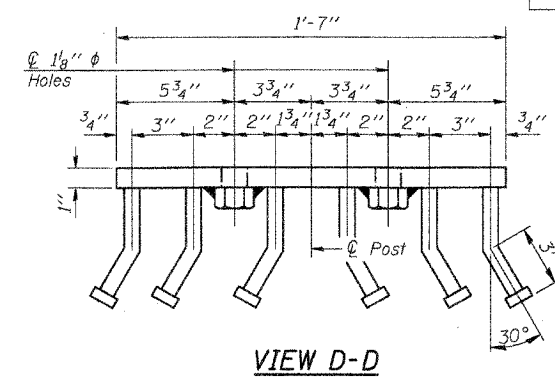


PLAN-BOTT. SPLICE TYPICAL

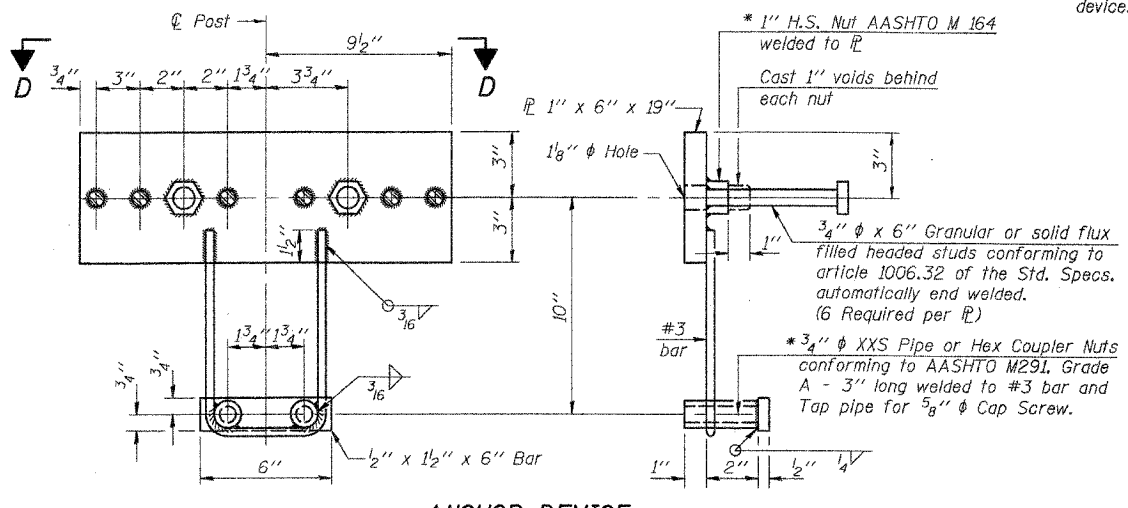
SECTION AT RAIL SPLICE



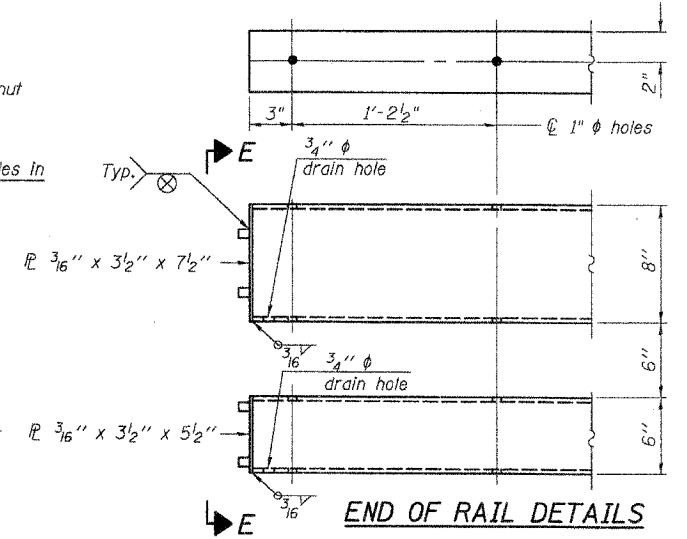
VIEW E-E



VIEW D-D



ANCHOR DEVICE



END OF RAIL DETAILS

Notes:  
 All field drilled holes shall be coated with an approved zinc rich paint before erection.  
 For multi-span bridges, sufficient 1/4" x 6" x 1'-2" galvanized steel shims shall be provided to align rail between adjacent spans. Cost included with Steel Bridge Rail, Type SM.  
 Steel rail elements shall be galvanized according to Article 509.05 of the Standard Specifications.  
 \*\* The studs of the anchor devices shall be placed below the top reinforcement bars and the outermost longitudinal reinforcement bar shall be placed directly above the studs of the rail post anchor device.

BILL OF MATERIAL

Item	Unit	Quantity
Steel Railing, Type SM	Foot	272

ILLINOIS DEPARTMENT OF TRANSPORTATION

SHEET TITLE: STEEL RAILING, TYPE SM WITH CONCRETE WEARING SURFACE

PROJECT: IL ROUTE 146 OVER DUTCH CREEK  
 FAP ROUTE 885 SECTION 104BR-1  
 UNION COUNTY  
 STATION 268+27.00  
 STRUCTURE NUMBER 091-0059

PROJECT NO. 06056-5  
 SCALE  
 DATE 11/30/07  
 DRAWN BY CFC  
 CHECKED BY MCB/BD  
 DRAWING NO. 7

COOMBE-BLOXDORF P.C.  
 Engineers / Land Surveyors  
 Springfield, Illinois  
 Design Firm License No. 184-002703

OF 13 SHTS

FILE NAME: ...  
 USER NAME: ...

\* Threaded areas shall be plugged or blocked off during casting of beam. Galvanized after fabrication.