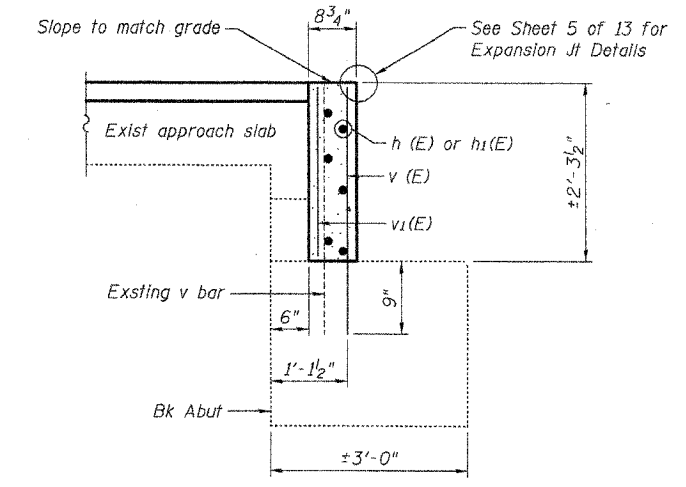
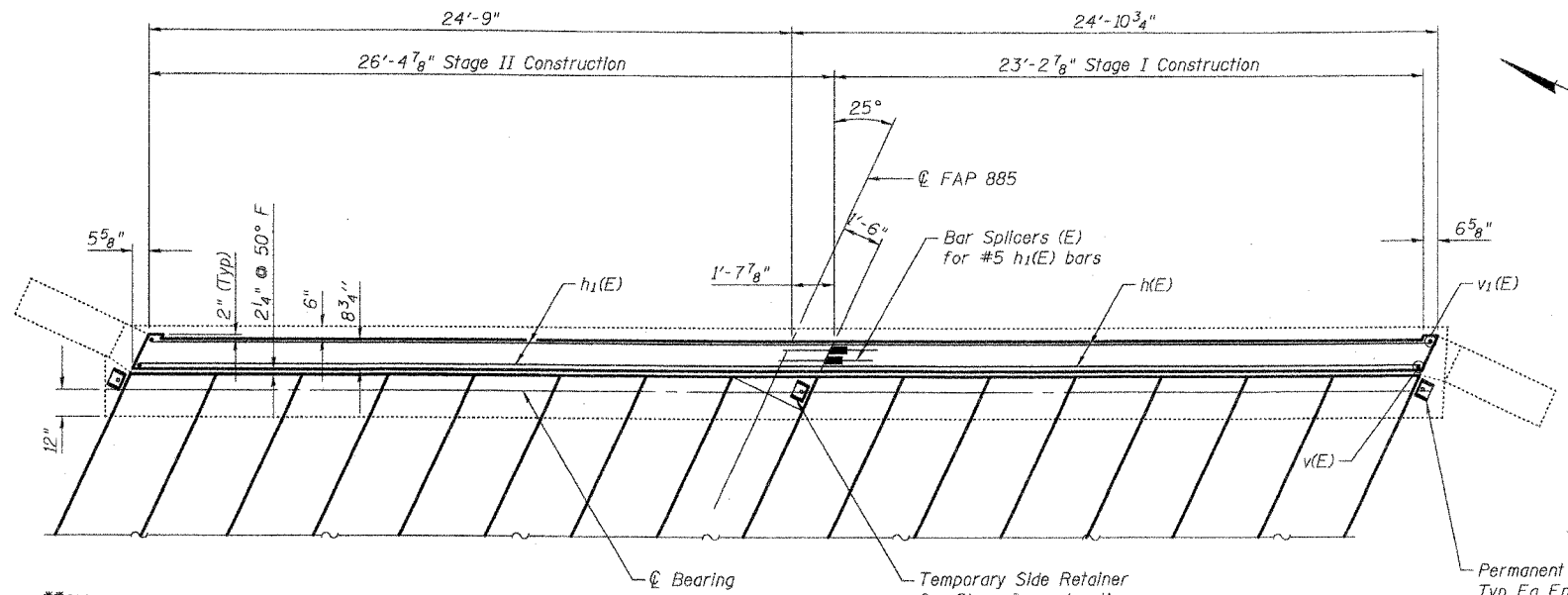


ELEVATION
(East Abutment Shown, West Abutment Opposite)

*Epoxy Grout v(E) & h2(E) bars in 9" deep min drilled holes according to Sec 584 of the Standard Specifications. The center of the hole for the h2(E) bars shall be drilled a min of 4" from the front face of the existing wingwall



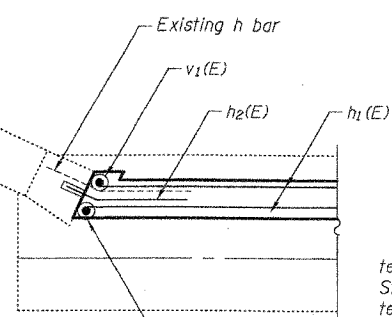
SECTION THRU ABUTMENT
(Dim at right angles)



TOP VIEW
(East Abutment Shown, West Abutment Opposite)

**Shim permanent retainers tight before grouting the shear keys and pouring the concrete wearing surface. Remove shims after the concrete wearing surface has cured.

BAR h2(E)



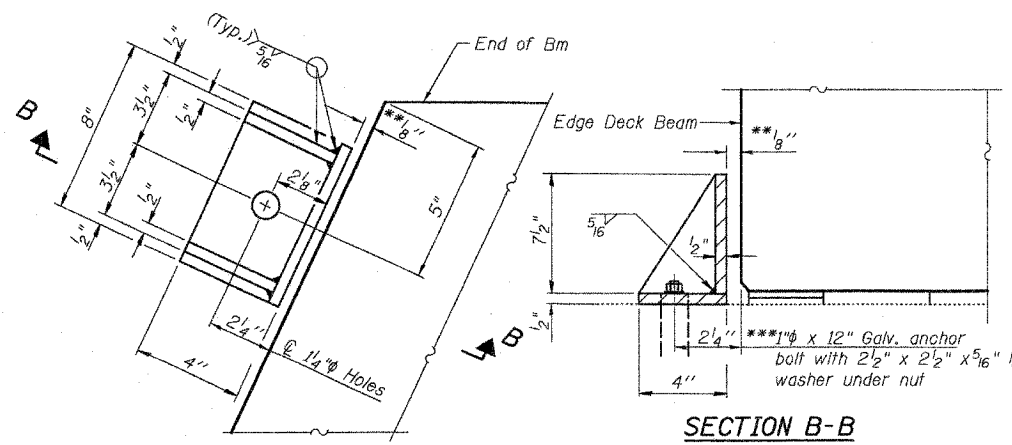
DETAIL A

BILL OF MATERIAL
2 - ABUTMENTS

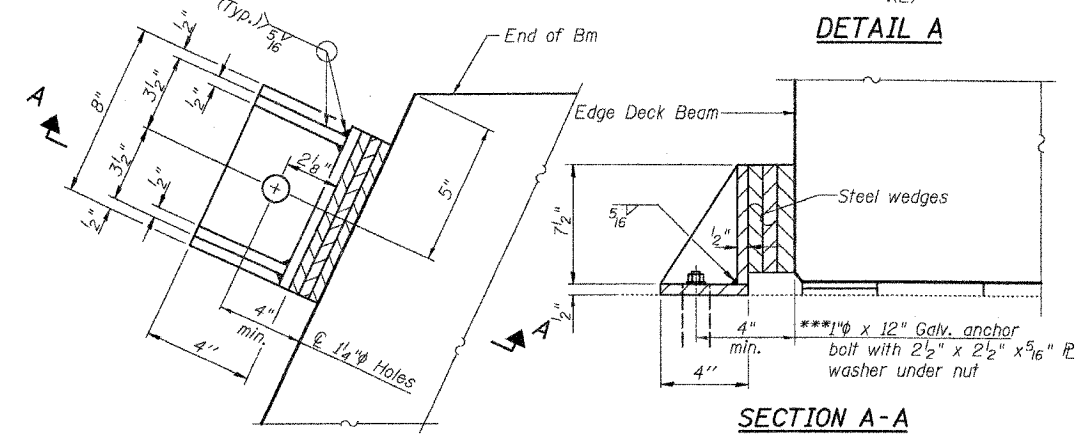
Bar	No.	Size	Length	Shape
h(E)	12	#5	22'-9"	—
h1(E)	12	#5	26'-1"	—
h2(E)	8	#5	3'-0"	—
v(E)	98	#5	2'-10"	—
v1(E)	98	#5	2'-0"	—
Concrete Structures		Cu. Yd.	6.2	
Reinforcement Bars, Epoxy Coated		Pound	1130	
Bar Splicers		Each	12	

NOTES

Install permanent retainers at abutment at South end of abutment cap and temporary retainer at Stage Line prior to grouting Stage I shear keys. After Stage I concrete and concrete wearing surface is poured and cured, the temporary retainer shall be removed. Burn existing anchor bolts flush with existing abutment surface. Grind anchor bolts smooth and seal with epoxy. Install permanent retainer at North end of abutment prior to grouting Stage II shear keys. Cost of retainers, accessories and removal of temporary retainer is included with Precast Prestressed Concrete Deck Beams.
The side retainers shall be galvanized after shop fabrication according to AASHTO M111 and ASTM 385.
Equivalent rolled angle with stiffeners will be allowed in lieu of welded plates for side retainers.



PLAN PERMANENT SIDE RETAINERS



PLAN TEMPORARY SIDE RETAINERS

***Anchor bolts shall be approved threaded rods placed in drilled holes and grouted in place. Cost included with Precast Prestressed Concrete Deck Beams (21" deep).

ILLINOIS DEPARTMENT OF TRANSPORTATION	
SHEET TITLE ABUTMENT DETAILS	
PROJECT IL ROUTE 146 OVER DUTCH CREEK FAP ROUTE 885 SECTION 104BR-1 UNION COUNTY STATION 268+27.00 STRUCTURE NUMBER 091-0059	PROJECT NO. 06056-S DATE 11/30/01 DRAWN BY TFG/CFC CHECKED BY MCB/BD DRAWING NO.
COOMBE-BLOXDORF P.C. Engineers / Land Surveyors Springfield, Illinois	
Design Firm License No. 184-002703	9 OF 13 SHTS

FILE NAME = ...sbr10489-abutment-detail.dgn
PLOT SCALE = 3/32" = 1' / 1" / 1"
USER NAME = GFL