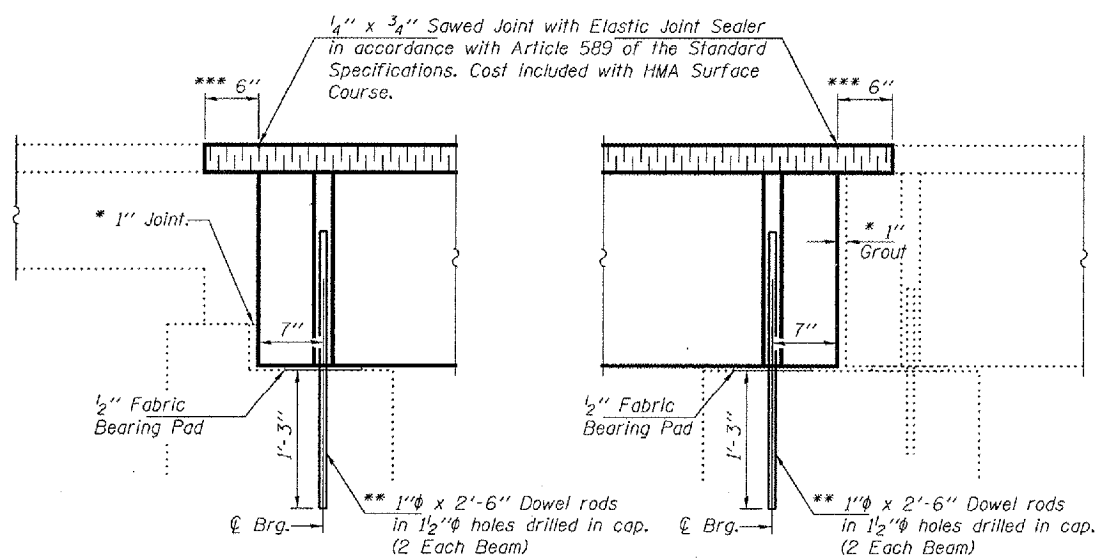


STATE OF ILLINOIS
DEPARTMENT OF TRANSPORTATION

ROUTE NO.	SECTION	COUNTY	SHEET NO.	SHEET	SHEET NO.
FA 776	*	SALINE	14	9	3
FED. ROAD DIST. NO. 7		ILLINOIS	FED. AID PROJECT		

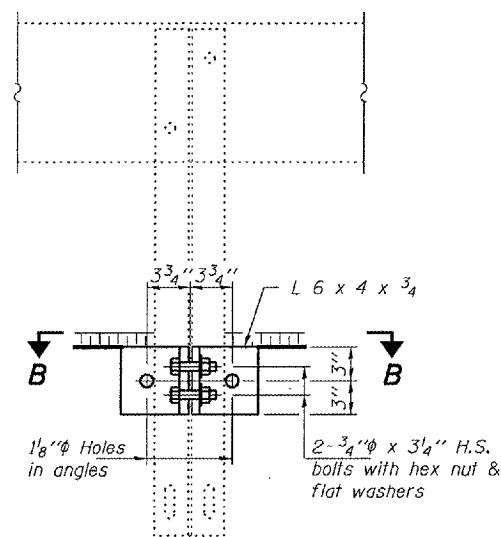
Contract Number: 78035
*(051-1, 121-1, 1241-1)



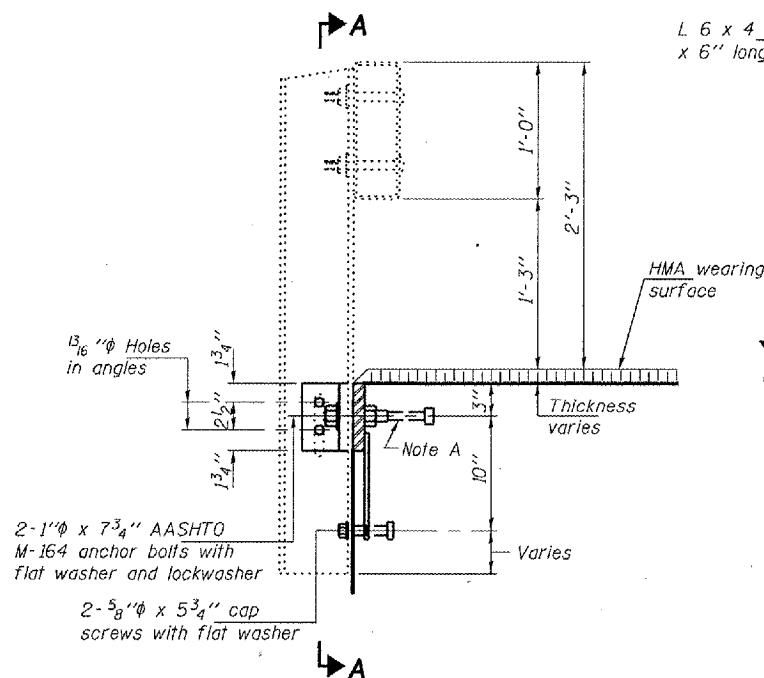
TYPICAL SECTION AT ABUTMENT

TYPICAL SECTION AT PIER

- * 1" Joint shall be packed with a very dry mix of 2:1 sand and PC mortar. This dimension may vary plus or minus to accommodate tolerance in beam lengths.
- ** Existing Dowel Rods shall be cut off & ground flush with the top of the existing concrete. Cost included with Removal of Existing PPC Deck Beams. Proposed Dowel Rods shall be grouted after beams are in place and allowed to cure (Min. 24 hrs.) prior to grouting shear keys.
- *** Limits of HMA surface removal.

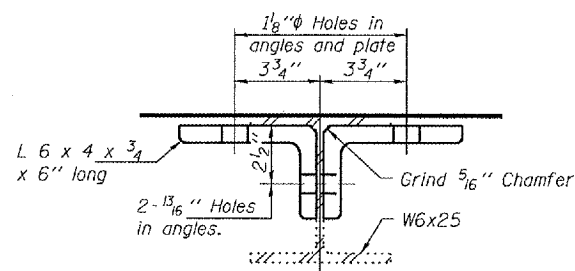


SECTION A-A

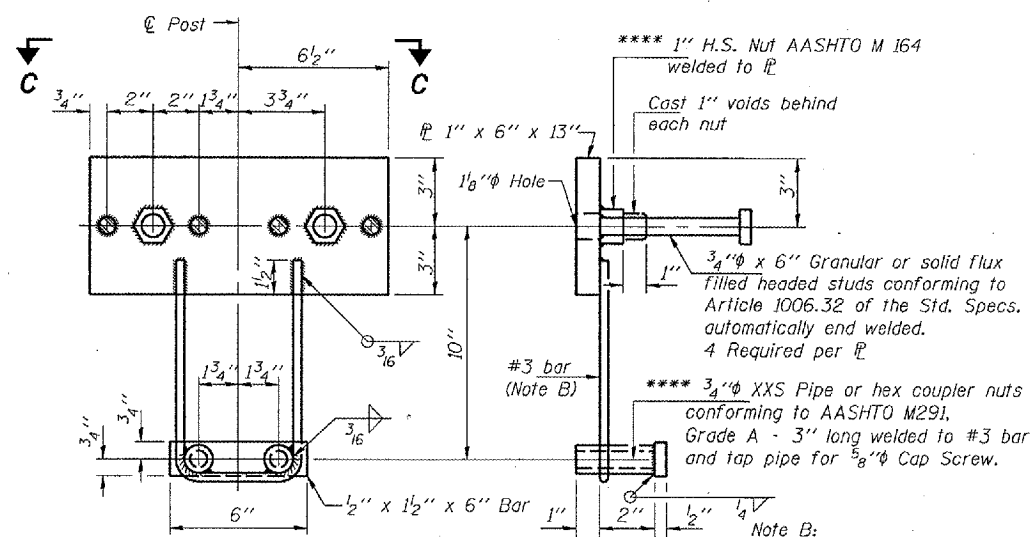


SECTION AT RAILING POST
(See sheet 2 of 3 for rail post spacing)

Note A:
The studs of the anchor devices shall be placed below the top reinforcement bars and the outermost longitudinal reinforcement bar shall be placed directly above the studs of the rail post anchor device.



SECTION B-B



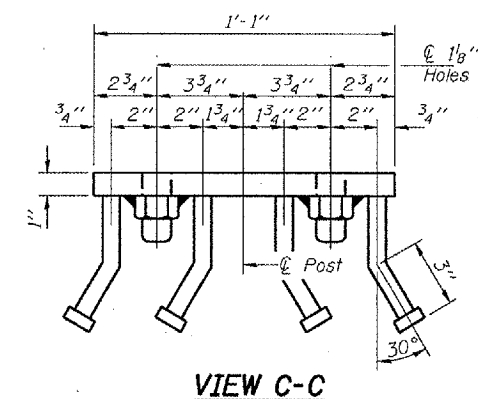
ANCHOR DEVICE

**** Threaded areas shall be plugged or blocked off during casting of beam.

Note B:

Whenever the lower insert assemblies interfere with strand locations, the #3 bars shall be cut and adjusted in order to allow raising or lowering of the lower inserts. Maximum adjustment not to exceed 1/2\".

Notes:
All field drilled holes shall be coated with an approved zinc rich paint before erection. For multi-span bridges, sufficient 1/4\" x 6\" x 1'-2\" galvanized steel shims shall be provided to align rail between adjacent spans. Cost included with Steel Railing, Type S-1. All steel rail elements shall be galvanized according to Article 509.05 of the Standard Specifications. Cost of the anchorage devices is included with the cost of Precast Prestressed Concrete Deck Beams (21\" Depth).



VIEW C-C

DESIGNED	AJB
CHECKED	VHV
DRAWN	baliva
CHECKED	AJB VHV

JANUARY 3, 2008
EXAMINED *Carl Probst*
ENGINEER OF STRUCTURAL SERVICES
PASSED *Ralph E. Anderson*
ENGINEER OF BRIDGES AND STRUCTURES

REPAIR DETAILS
FA 776 OVER RECTOR CREEK
SALINE COUNTY
SN 083-0031