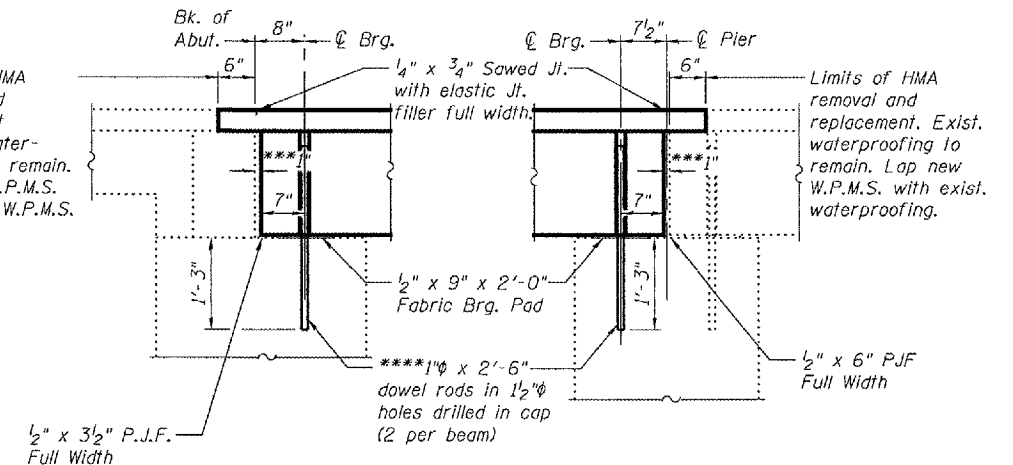
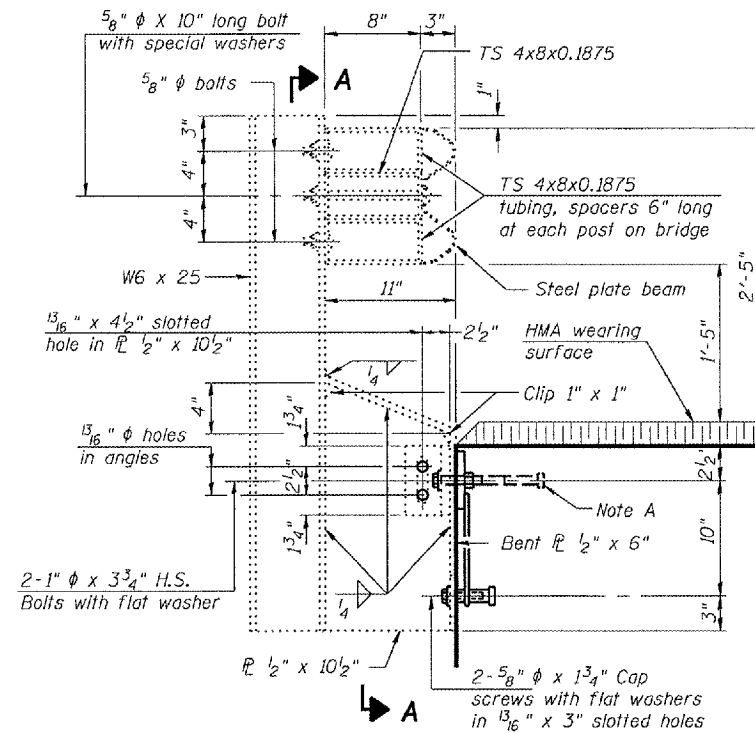
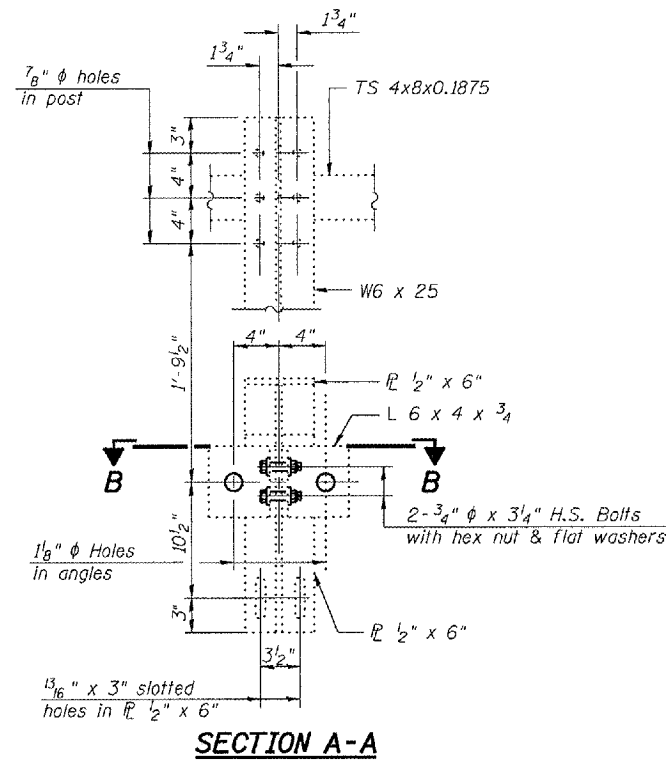


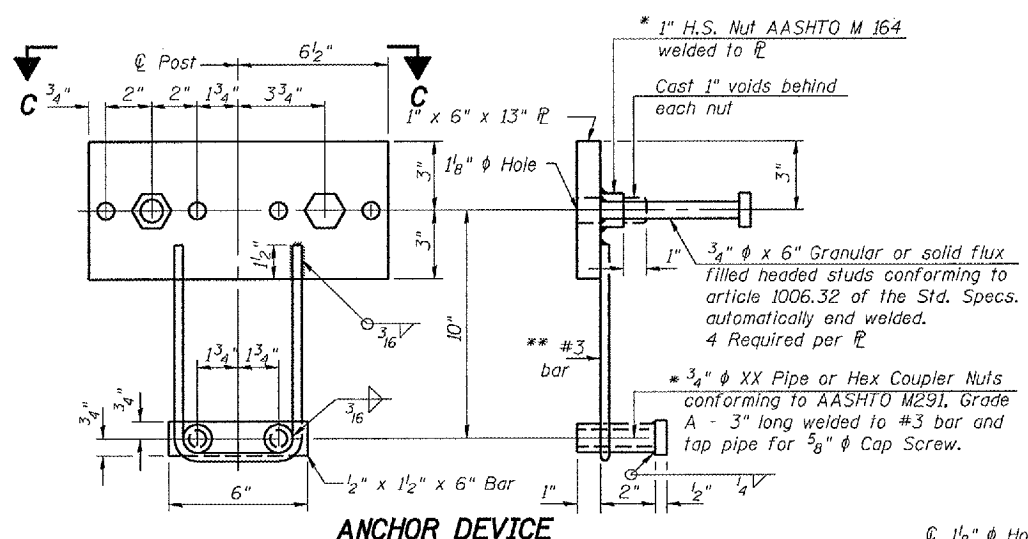
STATE OF ILLINOIS
DEPARTMENT OF TRANSPORTATION

ROUTE NO.	SECTION	COUNTY	SHEETS	"SET"	SHEET NO. 3 3 SHEETS
FAP 821		JEFFERSON	14	14	
FED. ROAD DIST. NO. 7	ILLINOIS	FED. AID PROJECT-			

Contract Number: 78035

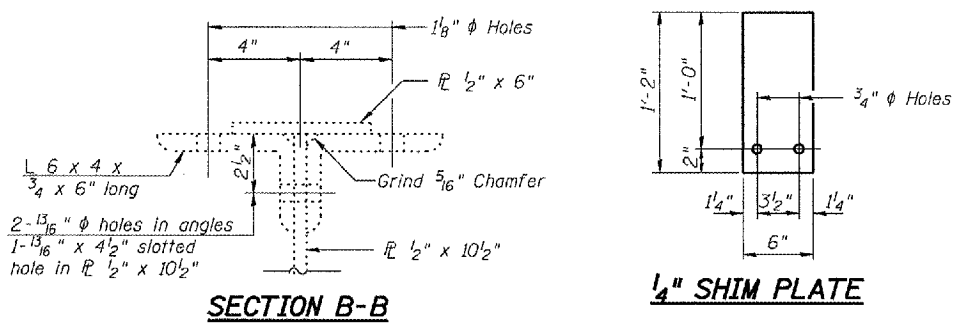
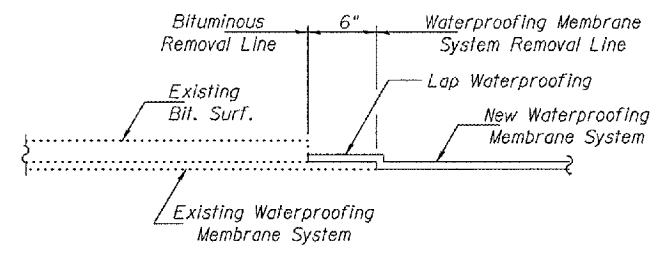


Notes:
 *1" Joint shall be filled with non-shrink grout. Dimension may vary to accommodate tolerance in beam lengths.
 **Existing dowel rods are to be burned off, ground flush, and sealed with epoxy prior to placement of new beams. Cost included in Removal of Existing PPC Deck Beams. After beams have been erected holes shall be drilled into cap and dowel rods placed. Dowel holes shall be filled with non-shrink grout to top of beam and allowed to cure a minimum of 24 hours prior to grouting the shear keys.

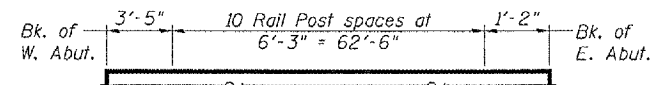
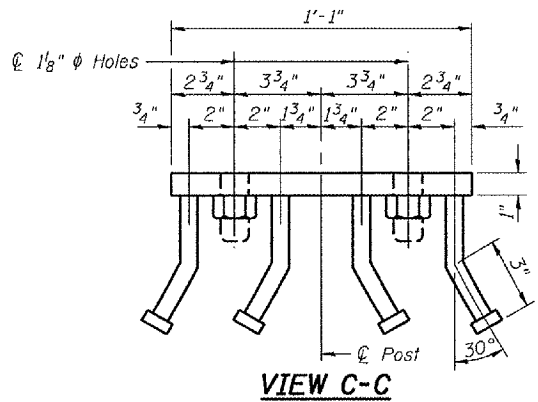


* Threaded areas shall be plugged or blocked off during casting of beam.
 ** Whenever the lower insert assemblies interfere with strand locations, the #3 bars shall be cut and adjusted in order to allow raising or lowering of the lower inserts. Maximum adjustment not to exceed 1/2 inch.

Note A:
 The studs of the anchor devices shall be placed below the top reinforcement bars and the outermost longitudinal reinforcement bar shall be placed directly above the studs of the rail post anchor device.



Notes:
 All field drilled holes shall be coated with an approved zinc rich paint before erection.
 For multi-span bridges, sufficient 1/4 inch x 6 inch x 1'-2 inch galvanized steel shims shall be provided to align rail between adjacent spans. Cost included with Remove and Re-Erect Existing Bridge Rail.
 All steel rail members shall be galvanized according to Article 509.05 of the Standard Specifications.
 Cost of all labor and material necessary to complete the work as shown on this sheet will be paid for at the contract unit price per foot for Remove and Re-erect Existing Bridge Rail.



BILL OF MATERIAL

Item	Unit	Quantity
Remove and Re-Erect Existing Bridge Rail	Foot	98

RAIL DETAILS
 FAP 821
 JEFFERSON COUNTY
 SN 041-0021

DESIGNED	A.J.B.	January 3, 2008
CHECKED	V.H.V.	EXAMINED <i>Carl P. ...</i>
DRAWN	Drew Christopher	PASSED <i>Ralph E. Anderson</i>
CHECKED	A.J.B. V.H.V.	ENGINEER OF BRIDGES AND STRUCTURES

R-30 11-1-06 6'-3" Maximun Post Spacing