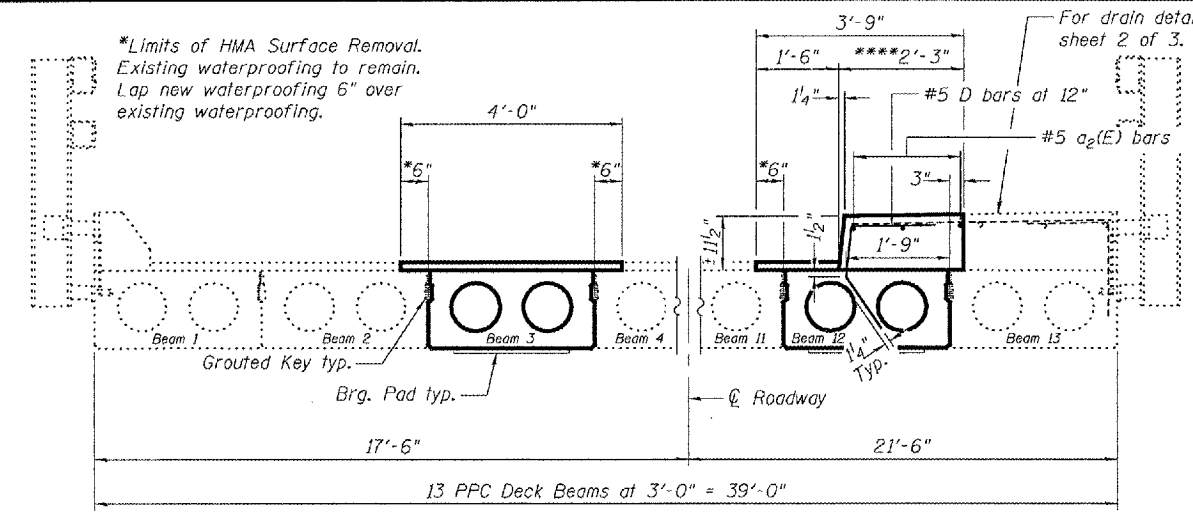


STATE OF ILLINOIS  
DEPARTMENT OF TRANSPORTATION

ROUTE NO.	SECTION	COUNTY	TOTAL SHEETS	SHEET NO.
		Jackson	10	8

SHEET NO. 3  
3 SHEETS

Contract Number: 78036

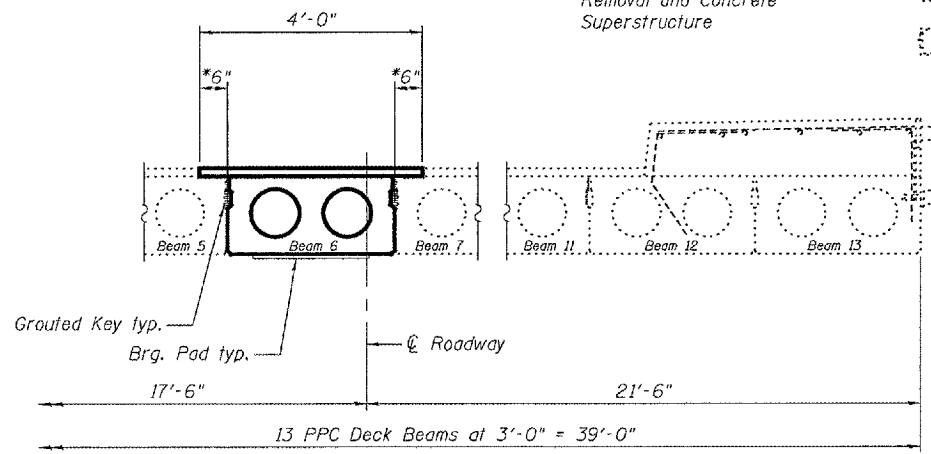


**SPAN 1 ELEVATION**  
(Looking West)

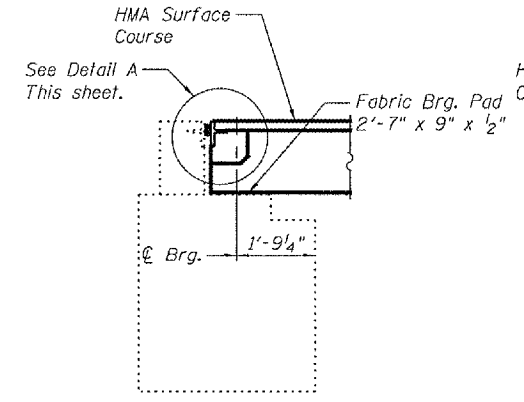
**SPAN 2 ELEVATION**  
(Looking West)

\*\*\*1" Joint shall be filled with non-shrink grout. Dimension may vary to accommodate tolerance in beam lengths.

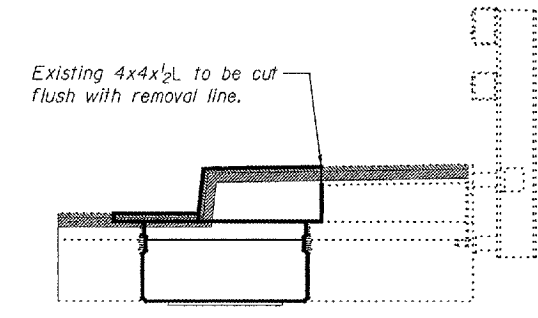
\*\*\*\*Concrete in this area is included with Concrete Removal and Concrete Superstructure



**SPAN 7 ELEVATION**  
(Looking West)

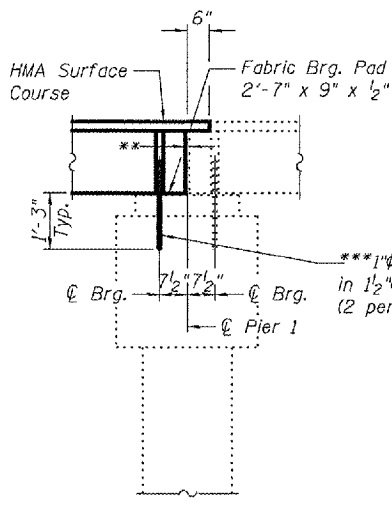


**TYPICAL ABUTMENT SECTION**

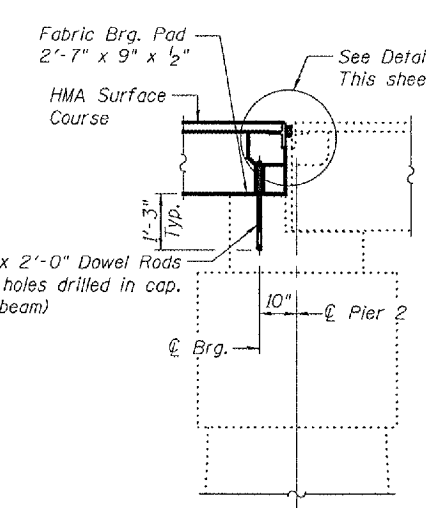


**END OF JOINT TREATMENT**

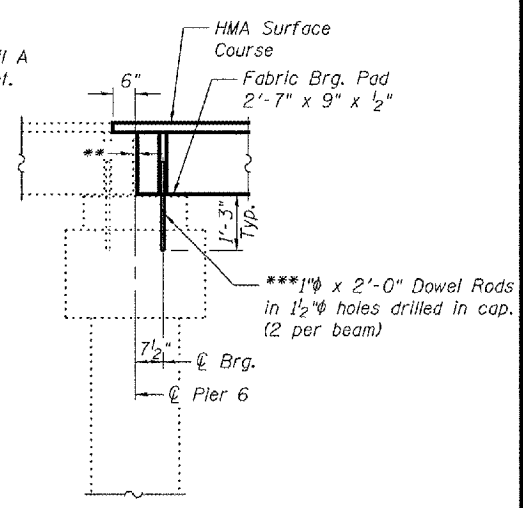
Note: After fabrication all surfaces of the steel plates shall be given one shop coat of paint specified for Structural Steel. No field painting required.



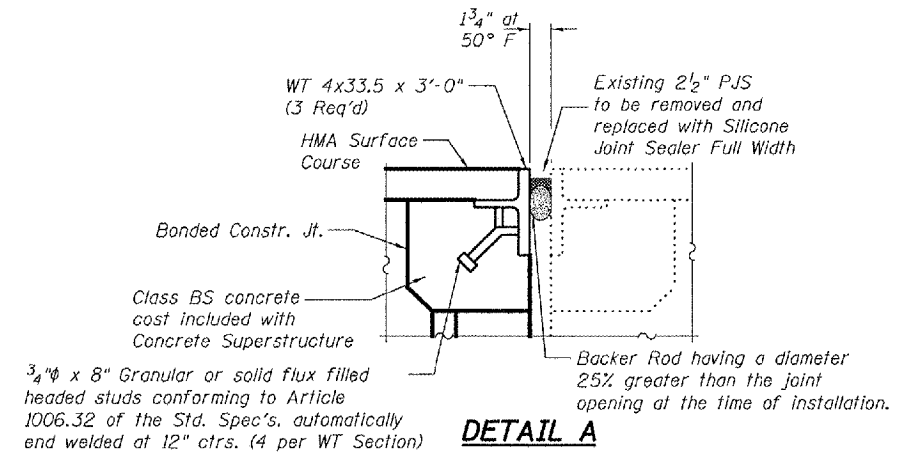
**PIER 1 SECTION**



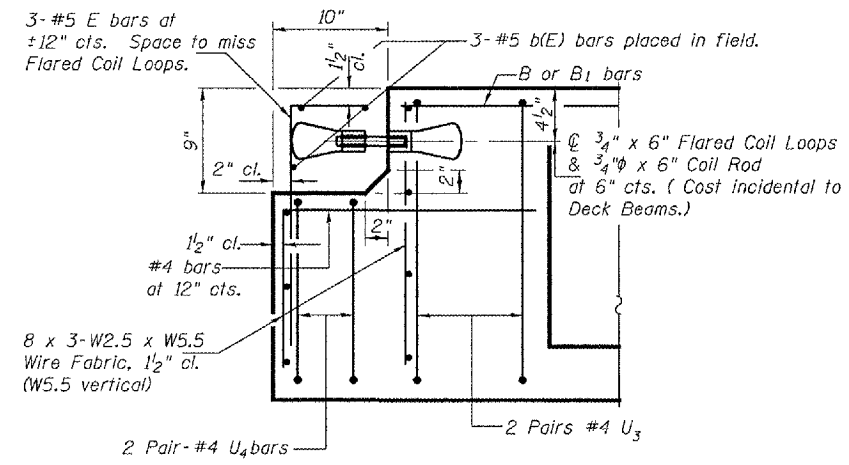
**PIER 2 SECTION**



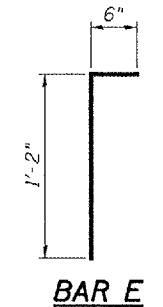
**PIER 6 SECTION**



**DETAIL A**



**END OF BEAM**  
(EXP. ENDS AND FIXED END PIER 2)



**BAR E**

\*\*\*Existing dowel rods are to be burned off, ground flush, and sealed with epoxy prior to placement of new beams. Cost included in Removal of Existing PPC Deck Beams. After beams have been erected holes shall be drilled into cap and dowel rods placed. Dowel holes shall be filled with non-shrink grout to top of beam and allowed to cure a minimum of 24 hours prior to grouting the shear keys.

DESIGNED	A.T.H.
CHECKED	A.J.B.
DRAWN	Drew Christopher
CHECKED	A.T.H. A.J.B.

EXAMINED	January 15, 2008
PASSED	Ralph E. Anderson

**BEAM DETAILS**  
F.A. RT. 9669  
JACKSON COUNTY  
SN 039-0036